

TEXAS BOARD OF WATER ENGINEERS

Durwood Manford, Chairman  
R. M. Dixon, Member  
O. F. Dent , Member

BULLETIN 5904

RECORDS OF WATER-LEVEL MEASUREMENTS IN  
BRAZORIA, FORT BEND, AND WALLER COUNTIES, TEXAS  
1931 THROUGH JUNE 1958

Compiled by

Frank A. Rayner, Geological Engineer  
Texas Board of Water Engineers

Prepared in cooperation with the Geological Survey,  
United States Department of the Interior

February 1959

## C O N T E N T S

	Page
Introduction .....	1
Water-level measurements in Brazoria County.....	7
Water-level measurements in Fort Bend County.....	33
Water-level measurements in Waller County.....	55

### ILLUSTRATIONS

Observation wells in Brazoria County, Tex.....	5
Fluctuation of water levels in well 438 and well 163a, Brazoria County, and annual precipitation at Angleton, Texas.....	25
Fluctuation of water levels in well 554, well 623 and well 612, Brazoria County, Texas.....	27
Observation wells in Fort Bend County, Texas.....	31
Fluctuation of water levels in well 7 and well L-3, Fort Bend County, Texas.....	47
Fluctuation of water levels in well K-14, well K-8, and well K-2, Fort Bend County, Texas.....	49
Observation wells in Waller County, Texas.....	53
Fluctuation of water levels in well 154 and well D-43, Waller County, and monthly precipitation at Hempstead, Texas.....	65
Fluctuation of water levels in well 239 and well 245, Waller County, Texas.....	67

RECORDS OF WATER-LEVEL MEASUREMENTS IN BRAZORIA,  
FORT BEND, AND WALLER COUNTIES, TEXAS, 1931 THROUGH JUNE 1958

Compiled by  
Frank A. Rayner, Geological Engineer  
Texas Board of Water Engineers

February 1959

INTRODUCTION

The Texas Board of Water Engineers is charged with making, independently or in cooperation with other State and Federal agencies, scientific investigations of the source, amount, and quality of ground-water supplies. To evaluate effects of ground-water development in relation to available supply, periodic measurements of water levels are made in principal reservoirs of the State through an observation well program conducted cooperatively by the Texas Board of Water Engineers and the United States Geological Survey.

This bulletin contains measurements of the depth to water in feet below land-surface datum in 82 wells in Brazoria County, 57 wells in Fort Bend County, and 31 wells in Waller County. The period of record covers measurements made in observation wells from 1931 through June 1958.

Observation well location maps precede the corresponding table of water level measurements for each county. Hydrographs illustrating the fluctuation of water levels in selected wells in Brazoria, Fort Bend and Waller Counties follow the associated table of water-level measurements. Charts of the annual precipitation at Angleton and monthly precipitation at Hempstead are combined with their respective hydrographs.

BRAZORIA COUNTY





WATER-LEVEL MEASUREMENTS IN BRAZORIA COUNTY, TEXAS

10. Lat. 29°33', long. 95°17'. Diameter 8 inches, depth 507 feet, screened from 477 to 507 feet.

Date	Water level	Date	Water level	Date	Water level
Apr. 16, 1931	47.5	Dec. 11, 1944	94.28	Sept. 21, 1948	113.87
Apr. 11, 1936	53.94	Mar. 21, 1945	94.36	Dec. 14	112.5
July 4, 1943	81.5	May 30, 1946	97.54	Feb. 8, 1949	112.08
Aug. 6	84.77	May 28, 1947	102.14	Dec. 15, 1950	122.0
Apr. 20, 1944	87.95	Feb. 5, 1948	106.00	Feb. 21, 1951	121.4

10a. Lat. 29°33', long 95°17'.

Sept. 18, 1951	128.0	Feb. 5, 1952	123.0	Sept. 17, 1952	175.0
Dec. 13	124.0	June 17	173.0		

18. Lat. 29°12', long. 95°49'. Diameter 4 inches, depth 473 feet, screened from 438 to 473 feet.

Nov. 7, 1946	8.61	Jan. 9, 1952	17.80	Jan. 25, 1956	28.74
Jan. 5, 1949	13.09	Aug. 13	19.15	Aug. 8	34.18
Aug. 24	13.83	Jan. 14, 1953	19.35	Jan. 31, 1957	33.14
Jan. 20, 1950	13.21	July 24	20.40	Aug. 7	34.25
Aug. 24	14.66	Aug. 10, 1954	20.13	Jan. 30, 1958	31.30
Feb. 6, 1951	15.30	Jan. 28, 1955	25.02		
Aug. 21	17.36	Aug. 28	28.77		

19. Lat. 29°11', long. 95°48'. Diameter 4 inches, depth 399 feet, screened from 379 to 399 feet.

Nov. 7, 1946	8.38	Aug. 21, 1951	16.21	Jan. 28, 1955	22.95
Jan. 5, 1949	12.46	Jan. 9, 1952	17.09	Aug. 9, 1956	28.16
Aug. 24	13.08	Aug. 13	17.95	Jan. 31, 1957	29.83
Jan. 20, 1950	12.94	Jan. 14, 1953	18.67	Aug. 7	29.41
Aug. 24	13.88	July 24	19.05	Jan. 30, 1958	29.71
Feb. 6, 1951	14.25	Aug. 10, 1954	26.58		

28. Lat. 29°09', long. 95°47'. Diameter 4 inches, depth 594 feet, screened from 582 to 594 feet.

Nov. 7, 1946	5.08	Aug. 21, 1951	15.18	Aug. 9, 1956	32.93
Jan. 5, 1949	9.94	Jan. 9, 1952	14.19	Jan. 31, 1957	32.09
Aug. 24	10.81	July 24, 1953	18.89	Aug. 7	33.27
Jan. 20, 1950	10.75	Jan. 28, 1955	25.20	Jan. 30, 1958	30.24
Aug. 24	11.14	Aug. 24	28.09		
Feb. 6, 1951	12.97	Jan. 25, 1956	27.71		

WATER-LEVEL MEASUREMENTS IN BRAZORIA COUNTY--CONTINUED

29. Lat. 29°09', long. 95°46'. Diameter 4 inches, depth 452 feet, screened from 419 to 451 feet.

Date	Water level	Date	Water level	Date	Water level
Jan. 5, 1949	11.65	Jan. 9, 1952	15.97	Aug. 24, 1955	23.42
Aug. 24	12.40	Aug. 13	15.91	Jan. 24, 1956	24.69
Jan. 20, 1950	11.92	Jan. 14, 1953	17.59	Aug. 9	27.14
Aug. 24	13.10	July 24	18.21	Jan. 30, 1958	28.53
Feb. 6, 1951	13.50	Aug. 10, 1954	20.71		
Aug. 21	15.03	Jan. 28, 1955	21.66		

30. Lat. 29°09', long. 95°47'. Diameter 7 inches, depth 500 feet.

Nov. 7, 1946	9.82	Jan. 9, 1952	17.13	Jan. 25, 1956	24.76
Jan. 5, 1949	12.88	Aug. 13	18.38	Aug. 9	27.79
Aug. 24	13.86	Jan. 14, 1953	18.58	Jan. 31, 1957	28.49
Jan. 20, 1950	13.06	July 24	19.85	Aug. 7	28.83
Aug. 24	14.20	Aug. 10, 1954	22.01	Jan. 30, 1958	28.07
Feb. 6, 1951	14.76	Jan. 28, 1955	23.44		
Aug. 21	16.43	Aug. 24	24.32		

31. Lat. 29°09', long. 95°47'. Diameter 4 inches, depth 618 feet, screened from 583 to 618 feet.

Nov. 7, 1946	4.16	Jan. 9, 1952	14.45	Jan. 24, 1956	26.37
Jan. 5, 1949	8.87	Aug. 13	14.90	Aug. 9	30.66
Aug. 24	9.75	Jan. 14, 1953	16.46	Jan. 31, 1957	30.23
Jan. 20, 1950	9.91	July 24	17.84	Aug. 7	31.08
Aug. 24	11.42	Aug. 10, 1954	23.31	Jan. 30, 1958	30.12
Feb. 6, 1951	12.13	Jan. 28, 1955	23.79		
Aug. 21	14.20	Aug. 24	26.25		

37. Lat. 29°09', long. 95°42'. Diameter 2 inches, depth 613 feet.

Oct. 21, 1936	+8.0	Feb. 6, 1951	19.53	Aug. 10, 1954	19.88
Nov. 7, 1946	15.24	Aug. 21	20.18	Jan. 28, 1955	22.19
Jan. 5, 1949	18.00	Jan. 9, 1952	20.17	Jan. 25, 1956	24.37
Aug. 24	18.06	Aug. 13	21.26	Jan. 31, 1957	28.48
Jan. 20, 1950	18.50	Jan. 14, 1953	21.01	Jan. 30, 1958	28.98
Aug. 24	17.18	July 24	18.06		

54. Lat. 29°08', long. 95°38'.

Jan. 20, 1950	12.1	Jan. 14, 1953	20.21	Jan. 31, 1957	27.15
Aug. 22	14.55	Jan. 28, 1955	25.00	Jan. 20, 1958	31.38
Jan. 10, 1952	18.44	Jan. 25, 1956	26.62		



WATER-LEVEL MEASUREMENTS IN BRAZORIA COUNTY--CONTINUED

100. Lat. 29°04', long. 95°44'. Diameter 4 inches, depth 150 feet, screened from 132 to 142 feet.

Date	Water level	Date	Water level	Date	Water level
Oct. 1942	12.0	July 24, 1949	34.64	July 18, 1955	28.00
June 29, 1944	13.4	Aug. 17	34.88	Aug. 24	24.59
Aug. 29	35.0	Aug. 23	35.90	Nov. 7	25.24
Dec. 15	35.0	Jan. 19, 1950	14.82	Jan. 25, 1956	22.79
Nov. 5, 1946	9.64	Aug. 23	29.92	Mar. 5	62.33
Nov. 17, 1947	20.67	Jan. 4, 1951	37.14	July 30	69.43
Mar. 1, 1948	23.50	26	38.85	Aug. 8	64.45
Apr.	15.36	Aug. 22	50.43	Sept. 10	60.98
June 2	33.73	Jan. 9, 1952	49.93	Dec. 10	65.17
July 15	36.00	Aug. 12	48.86	Jan. 30, 1957	65.87
Sept. 24	36.00	Jan. 13, 1953	20.46	Mar. 25	47.00
Oct. 19	36.98	Aug. 8, 1954	33.40	June 17	56.45
Nov. 12	38.10	Sept. 15	30.17	Aug. 5	66.10
Dec. 7	37.50	Nov. 8	22.00	Oct. 7	55.72
Jan. 4, 1949	26.49	Jan. 10, 1955	22.23	Jan. 27, 1958	42.53
Feb. 16	38.88	28	29.21	Jan. 30	38.54
Mar. 18	34.80	Mar. 7	26.74		
June 25	30.95	May 2	26.63		

101. Lat. 29°04', long. 95°44'. Diameter 3½ inches, depth 161 feet.

Jan. 8, 1943	12.1	Jan. 4, 1949	25.78	Jan. 13, 1953	25.90
June 29, 1944	32.6	Feb. 16	31.80	Oct. 25, 1954	31.48
Aug. 29	25.0	Mar. 18	31.73	Nov. 8	42.48
Dec. 15	34.4	May 27	29.14	Jan. 10, 1955	46.08
Nov. 5, 1946	10.16	June 24	30.66	Mar. 7	53.97
Nov. 17, 1947	24.15	Aug. 17	31.16	May 2	65.42
Mar. 1, 1948	21.78	23	32.27	July 18	58.60
Apr.	15.52	Jan. 19, 1950	15.03	Nov. 7	59.14
June 2	30.84	Aug. 23	29.24	Jan. 25, 1956	45.52
July 15	31.57	Jan. 4, 1951	33.90	Mar. 5	60.16
Sept. 24	31.66	26	35.51	July 30	69.22
Oct. 19	32.83	Aug. 22	51.06	Dec. 10	65.66
Nov. 12	33.63	Jan. 9, 1952	52.44	Mar. 25, 1957	48.20
Dec. 7	32.72	Aug. 12	55.74		

103. Lat. 29°04', long. 95°44'. Diameter 18 inches, depth 159 feet. Casing slotted from 92 to 155 feet.

Feb. 21, 1943	10.0	Nov. 5, 1946	6.56	July 15, 1948	48.06
May 10, 1944	32.0	Nov. 17, 1947	48.97	Sept. 24	47.75
June 29	14.0	Apr. 1948	12.28	Oct. 19	48.88
Dec. 15	24.0	June 2	45.20	Nov. 12	49.85

Continued



WATER-LEVEL MEASUREMENTS IN BRAZORIA COUNTY--CONTINUED

103. Continued

Date	Water level	Date	Water level	Date	Water level
Dec. 7, 1948	49.63	June 24, 1949	45.70	Jan. 4, 1951	52.31
Jan. 4, 1949	24.43	Aug. 17	46.11	26	52.44
Feb. 16	50.12	23	46.27	Jan. 13, 1953	23.09
Mar. 18	48.22	Jan. 19, 1950	13.09	Jan. 25, 1956	49.54
May 27	42.39	Aug. 23	29.51		

105. Lat. 29°04', long. 95°44'. Diameter 18 inches, depth 166 feet. Casing slotted from 102 to 162 feet.

Sept. 23, 1943	30.0	Aug. 12, 1952	56.20	Nov. 7, 1955	54.10
July 30, 1944	43.0	Jan. 13, 1953	30.11	Jan. 25, 1956	45.18
Nov. 5, 1946	10.03	Jan. 26, 1954	40.13	Mar. 5	54.40
Nov. 17, 1947	21.13	Mar. 7, 1955	50.34	July 30	68.90
Aug. 20, 1951 a	107.31	May 5	54.30	Aug. 8	66.70
Jan. 9, 1952	54.06	July 18	55.71		

106. Lat. 29°04', long. 95°44'. Diameter 10 inches, depth 169 feet. Casing slotted from 105 to 165 feet.

Sept. 29, 1943	24.5	Apr. 1948	13.04	Jan. 19, 1950	13.07
May 10, 1944	11.5	Dec. 7	35.68	Aug. 23	67.32
Dec. 15	40.5	Jan. 4, 1949	24.67	Jan. 4, 1951	70.50
Nov. 5, 1946	7.92	May 27	59.59	26	73.37
Nov. 17, 1947	17.45	June 24	63.53	Aug. 22	81.52
Mar. 23, 1948	15.81	Aug. 23	63.42		

106a. Lat. 29°04', long. 95°44'. Diameter 6 inches, depth approximately 150 feet.

Nov. 17, 1947	20.85	May 27, 1949	31.33	Aug. 8, 1954	47.13
Mar. 23, 1948	19.69	June 24	30.55	Sept. 13	49.13
Apr.	16.00	Aug. 17	31.30	Nov. 8	39.13
June 2	30.41	23	32.01	Jan. 10, 1955	43.53
July 15	31.14	Jan. 19, 1950	15.50	Mar. 7	49.81
Sept. 24	32.03	Aug. 23	28.89	May 2	54.30
Oct. 19	32.80	Jan. 26, 1951	34.47	July 18	55.05
Nov. 12	33.53	Aug. 22	47.31	Nov. 7	54.54
Dec. 9	31.75	Jan. 9, 1952	50.21	Jan. 25, 1956	43.33
Jan. 4, 1949	26.11	Aug. 12	52.64	May 5	54.94
Feb. 16	33.11	Jan. 13, 1953	25.44	July 30	68.20
Mar. 18	31.27	Jan. 26, 1954	39.88	Sept. 10	61.30

Continued

WATER-LEVEL MEASUREMENTS IN BRAZORIA COUNTY--CONTINUED

106a. Continued

Date	Water level	Date	Water level	Date	Water level
Dec. 10, 1956	64.99	June 17, 1957	55.26	Jan. 27, 1958	35.88
Jan. 30, 1957	40.09	Aug. 5	59.19		
Mar. 25	46.88	Oct. 7	53.74		

106b. Lat. 29°04', long. 95°44'.

Aug. 22, 1951	32.66	Jan. 26, 1954	26.02	Jan. 25, 1956	37.71
Jan. 9, 1952	38.44	Aug. 10	34.82	Aug. 8	35.36
Aug. 12	32.22	Jan. 28, 1955	35.80	Aug. 6, 1957	40.71
Jan. 13, 1953	16.34	Aug. 24	33.49	Jan. 30, 1958	27.07

106c. Lat. 29°04', long. 95°44'.

July 30, 1956	48.34	Mar. 25, 1957	40.57	Jan. 27, 1958	34.55
Sept. 10	43.90	June 17	44.24	Jan. 30	33.64
Dec. 10	47.08	Aug. 5	45.22		
Jan. 30, 1957	47.51	Oct. 7	44.73		

125. Lat. 29°04', long 95°41'. Diameter 4 inches, depth 475 feet, screened from 449 to 470 feet.

Jan. 6, 1949	3.10	Aug. 21, 1951	5.72	Aug. 10, 1954	10.84
Aug. 23	4.67	Jan. 10, 1952	7.15	Jan. 28, 1955	11.26
Jan. 19, 1950	4.72	Aug. 12	8.24	Aug. 24	13.24
Aug. 23	6.41	Jan. 13, 1953	8.35	Jan. 25, 1956	13.90
Feb. 6, 1951	5.02	July 28	10.32		

125b. Lat. 29°04', long 95°41'. Diameter 4 inches, depth 150 feet.

Aug. 23, 1950	12.35	July 28, 1953	17.03	Aug. 8, 1956	19.50
Aug. 21, 1951	15.50	Aug. 10, 1954	17.24	Jan. 30, 1957	20.19
Jan. 10, 1952	16.03	Jan. 28, 1955	17.57	Aug. 6	18.76
Aug. 12	15.60	Aug. 24	18.03	Feb. 4, 1958	17.42
Jan. 13, 1953	16.09	Jan. 25, 1956	18.39		

126. Lat. 29°02', long. 95°39'. Diameter 6 inches, depth 185 feet, screened from 145 to 185 feet.

Nov. 5, 1946	10.4	Feb. 6, 1951	14.38	July 28, 1953	16.15
Jan. 6, 1949	14.70	Aug. 21	15.47	Jan. 28, 1955	18.15
Aug. 23	14.91	Jan. 10, 1952	16.12	Jan. 26, 1956	19.68
Jan. 19, 1950	11.00	Aug. 12	15.54	Jan. 30, 1957	21.00
Aug. 23	11.90	Jan. 13, 1953	16.10	Feb. 4, 1958	18.05

WATER-LEVEL MEASUREMENTS IN BRAZORIA COUNTY--CONTINUED

152. Lat. 28°59', long. 95°32'. Diameter 6 inches, depth 650 feet, screened from 638 to 650 feet.

Date	Water level	Date	Water level	Date	Water level
Nov. 14, 1946	47.89	Jan. 6, 1949	45.90	Aug. 23, 1949	47.47

163a. Lat. 28°54', long. 95°36'. Diameter 3 inches, depth 117 feet.

Jan. 6, 1949	5.60	Aug. 21, 1951	7.68	Jan. 27, 1955	8.00
Aug. 23	6.95	Jan. 9, 1952	6.97	Jan. 26, 1956	9.03
Jan. 19, 1950	3.88	Aug. 12	6.88	Aug. 8	10.61
Aug. 23	3.35	Jan. 13, 1953	6.81	Aug. 6, 1957	11.22
Jan. 26, 1951	5.49	July 28	5.43	Feb. 4, 1958	5.56

200. Lat. 28°54', long. 95°36'. Diameter 2 inches, depth 542 feet, screened from 532 to 542 feet.

May 18, 1937 +	3.78	Jan. 26, 1951	21.45	Jan. 13, 1953	21.46
Jan. 6, 1949	19.74	Aug. 21	22.09	July 28	22.10
Jan. 19, 1950	19.56	Jan. 9, 1952	21.48	Jan. 26, 1956	31.12
Aug. 23	21.34	Aug. 12	21.78		

200a. Lat. 28°54', long. 95°36'. Diameter 3 inches, depth 763 feet.

Jan. 6, 1949	3.70	Aug. 12, 1952	14.2	Aug. 8, 1956	16.0
Jan. 19, 1950	6.39	July 28, 1953	6.22	Jan. 30, 1957	11.44
Aug. 23	10.46	Aug. 10, 1954	9.02	Aug. 6	12.50
Jan. 26, 1941	12.2	Jan. 27, 1955	9.42		
Jan. 9, 1952	13.6	Jan. 26, 1956	14.79		

203a. Lat. 28°54', long. 95°34'. Diameter 4 inches.

Jan. 6, 1949	3.22	Aug. 23, 1950	1.59	Jan. 9, 1952	4.09
Aug. 23	9.05	Jan. 26, 1951	3.36	July 28, 1953	5.34
Jan. 19, 1950	2.28	Aug. 21	4.30		



WATER-LEVEL MEASUREMENTS IN BRAZORIA COUNTY--CONTINUED

308. Lat. 28°56', long. 95°21'. Diameter 14 to 8 inches, depth 249 feet, screened from 206 to 247 feet.

Date	Water level	Date	Water level	Date	Water level
June 27, 1941	58.5	Jan. 8, 1952	132.75	Jan. 26, 1956	156.18
Oct. 26, 1946	112.9	Aug. 11	136.27	Aug. 8	134.19
Aug. 22, 1949	118.01	Jan. 12, 1953	129.95	Jan. 29, 1957	143.60
Jan. 18, 1950	122.10	July 27	140.14	Aug. 6	131.12
Aug. 22	121.03	Aug. 9, 1954	140.15	Feb. 4, 1958	122.92
Jan. 25, 1951	128.73	Jan. 26, 1955	126.09		
Aug. 21	146.0	Aug. 23	154.78		

309. Lat. 28°56', long. 95°21'. Diameter 12 inches, depth 249 feet.

Aug. 22, 1949	115.94	Aug. 11, 1952	135.47	Jan. 26, 1956	152.64
Jan. 18, 1950	118.50	Jan. 12, 1953	125.81	Aug. 8	130.55
Aug. 22	118.04	July 27	138.00	Jan. 29, 1957	137.21
Jan. 25, 1951	124.07	Aug. 9, 1954	129.57	Aug. 6	137.17
Aug. 21	141.40	Jan. 26, 1955	123.74	Feb. 4, 1958	111.44
Jan. 8, 1952	129.28	Aug. 23	145.96		

309a. Lat. 28°56', long. 95°20'. Diameter 18 inches, depth 267 feet.

Jan. 18, 1950	102.80	Aug. 11, 1952	133.80	Jan. 26, 1956	133.20
June 22	113.33	Jan. 12, 1953	122.36	Aug. 8	123.96
Jan. 25, 1951	105.70	July 27	128.63	Jan. 29, 1957	124.45
Aug. 21	128.50	Aug. 9, 1954	115.22	Aug. 6	131.58
Jan. 8, 1952	126.02	Aug. 23, 1955	125.15	Feb. 4, 1958	101.29

327. Lat. 28°57', long. 95°21'. Diameter 10 to 5 inches, depth 255 feet, screened from 218 to 245 feet.

Feb. 19, 1946	93.5	Jan. 18, 1950	106.33	Aug. 12, 1952	122.80
Oct. 11	97.47	Aug. 22	109.51	Jan. 12, 1953	124.36
Aug. 22, 1949	103.76	Aug. 21, 1951	129.50		

328. Lat. 28°57', long. 95°21'. Diameter 10 to 5 inches, depth 266 feet, screened from 216 to 263 feet.

Aug. 30, 1941	84.00	Jan. 18, 1950	113.65	Aug. 21, 1951	135.60
Oct. 11, 1946	101.30	Aug. 22	117.46	Aug. 11, 1952	131.98
Aug. 22, 1949	110.23	Jan. 25, 1951	118.36		



WATER-LEVEL MEASUREMENTS IN BRAZORIA COUNTY--CONTINUED

347. Lat. 29°01', long. 95°26'.

Date	Water level	Date	Water level	Date	Water level
July 8, 1943	27.5	Jan. 25, 1951	22.91	Jan. 31, 1957	45.13
Aug. 24, 1949	39.45	Aug. 20	32.06	Aug. 7	46.93
Jan. 20, 1950	34.8	Jan. 19, 1955	37.5		
Aug. 24	20.50	Aug. 9, 1956	49.63		

348. Lat. 29°01', long. 95°26'.

Sept. 12, 1942	54.0	Aug. 21, 1951	29.94	Jan. 19, 1955	35.60
Aug. 23, 1949	30.54	Jan. 8, 1952	28.46	Jan. 26, 1956	40.44
Jan. 20, 1950	15.60	Aug. 13	30.45	Aug. 7, 1957	47.68
Aug. 24	20.50	Jan. 14, 1953	29.36		
Jan. 25, 1951	21.95	July 27	33.75		

348a. Lat. 29°01', long. 95°26'. Diameter 10 inches, depth 260 feet.

Aug. 24, 1949	24.95	Jan. 25, 1951	24.54	Jan. 19, 1953	38.5
Jan. 20, 1950	21.98	Jan. 8, 1952	31.54	Feb. 5, 1958	40.51

411. Lat. 29°18', long. 95°26'. Diameter 24 inches, depth 923 feet, screened opposite 8 sands between 191 and 916 feet.

Apr. 13, 1931	2.57	Dec. 31, 1948	18.23	Aug. 29, 1949	22.14
Nov. 15, 1946	13.08				

412. Lat. 29°18', long. 95°26'. Diameter 24 inches, depth 1,168 feet, screened opposite 8 sands from 242 to 1,164 feet.

Nov. 15, 1946	11.42	Jan. 14, 1952	26.08	Aug. 22, 1955	39.94
Dec. 31, 1948	17.60	Sept. 3	27.98	Jan. 19, 1956	40.70
Jan. 23, 1950	19.89	Jan. 16, 1953	28.97	Aug. 2	42.77
Aug. 29	26.07	July 22	30.56	Jan. 28, 1957	45.05
Jan. 16, 1951	23.31	Aug. 11, 1954	36.09	Aug. 8	44.44
Aug. 23	24.91	Jan. 21, 1955	37.92	Feb. 5, 1958	45.74

413. Lat. 29°16', long. 95°20'. Diameter 4 inches, depth 312 feet, screened from 289 to 312 feet.

July 29, 1946	2.39	Jan. 4, 1949	6.62	Jan. 17, 1950	2.32
Mar. 3, 1948	3.86	Aug. 29	7.63		

WATER-LEVEL MEASUREMENTS IN BRAZORIA COUNTY--CONTINUED

415. Lat. 29°16', long. 95°20'. Diameter 4 inches, depth 400 feet.

Date	Water level	Date	Water level	Date	Water level
July 29, 1946	1.06	Aug. 23, 1951	7.59	Aug. 19, 1955	9.33
Mar. 3, 1948	7.40	Jan. 11, 1952	8.98	Jan. 20, 1956	8.38
Jan. 4, 1949	9.98	Aug. 14	5.49	Aug. 3	9.13
Aug. 29	8.39	Jan. 15, 1953	6.46	Jan. 25, 1957	13.15
Jan. 17, 1950	2.32	July 23	5.79	Aug. 9	8.50
Aug. 20	4.65	Aug. 4, 1954	9.46	Jan. 22, 1958	7.04
Jan. 15, 1951	4.23	Jan. 31, 1955	10.37		

416. Lat. 29°15', long. 95°20'. Diameter 6 inches, depth 311 feet, screened from 265 to 306 feet.

June 1936 +	0.7	Jan. 15, 1951	4.50	Jan. 20, 1956	8.87
July 29, 1946	1.89	Jan. 11, 1952	9.79	Aug. 3	9.70
Jan. 4, 1949	12.13	Aug. 14	6.52	Jan. 25, 1957	13.28
Aug. 29	8.38	Jan. 15, 1953	7.73	Aug. 9	8.95
Jan. 17, 1950	3.52	July 23	7.60	Jan. 22, 1958	7.57
Aug. 30	4.63	Aug. 19, 1954	10.84		

417. Lat. 29°15', long. 95°20'. Diameter 4 inches, depth 315 feet, screened from 289 to 310 feet.

July 29, 1946 +	0.95	Jan. 17, 1950	0.80	Jan. 15, 1953	4.57
Mar. 3, 1948	7.24	Aug. 30	2.01	Aug. 4, 1954	13.02
Jan. 4, 1949	9.62	Jan. 15, 1951	7.83	Aug. 3, 1956	13.54
Aug. 29	5.78	Aug. 23	5.18	Aug. 9, 1957	13.04

418. Lat. 29°15', long. 95°20'. Diameter 4 inches, depth 514 feet, screened from 491 to 514 feet.

July 29, 1946	26.76	Jan. 15, 1951	23.48	Jan. 31, 1955	25.19
Mar. 3, 1948	19.51	Aug. 23	25.16	Jan. 20, 1956	25.35
Jan. 4, 1949	26.65	Jan. 11, 1952	28.79	Aug. 3	29.18
Aug. 29	21.94	Jan. 15, 1953	28.84	Jan. 25, 1957	28.61
Jan. 17, 1950	21.60	July 23	28.50	Jan. 22, 1958	25.79
Aug. 30	22.43	Aug. 4, 1954	25.98		

WATER-LEVEL MEASUREMENTS IN BRAZORIA COUNTY--CONTINUED

420. Lat. 29°14', long. 95°19'. Diameter 4 inches, depth 441 feet, screened from 418 to 441 feet.

Date	Water level	Date	Water level	Date	Water level
July 29, 1946	29.86	Jan. 15, 1953	35.65	Aug. 3, 1956	35.93
Jan. 4, 1949	34.35	July 23	35.08	Aug. 9, 1957	31.88
Jan. 17, 1950	27.07	Jan. 31, 1955	29.51	Jan. 22, 1958	29.19
Jan. 11, 1952	31.84	Aug. 19	30.40		
Aug. 14	32.89	Jan. 20, 1956	31.00		

420a. Lat. 29°15', long. 95°18'. Diameter 4 inches.

Aug. 30, 1950	32.37	July 23, 1953	39.50	Jan. 25, 1957	36.02
Jan. 15, 1951	32.67	Aug. 4, 1954	34.41	Aug. 9,	33.82
Aug. 23	32.73	Jan. 31, 1955	33.52	Jan. 22, 1958	33.01
Jan. 11, 1952	34.90	Jan. 20, 1956	35.10		
Jan. 15, 1953	39.99	Aug. 3	39.58		

421. Lat. 29°15', long. 95°19'. Diameter 4 inches, depth 309 feet, screened from 285 to 309 feet.

July 29, 1946	2.48	Jan. 15, 1951	6.45	Aug. 4, 1954	14.95
Jan. 4, 1949	12.13	Aug. 23	9.05	Jan. 31, 1955	18.54
Aug. 29	8.72	Jan. 11, 1952	9.49	Jan. 20, 1956	11.06
Jan. 17, 1950	6.02	Aug. 14	9.73	Jan. 25, 1957	14.47
Aug. 30	6.33	Jan. 15, 1953	11.78		

422. Lat. 29°16', long. 95°18'. Diameter 4 inches, depth 355 feet, screened from 332 to 355 feet.

July 29, 1946	2.85	Aug. 30, 1950	6.13	Jan. 11, 1952	8.96
Jan. 4, 1949	11.92	Jan. 15, 1951	5.83		

425. Lat. 29°11', long. 95°19'. Diameter 24 to 12 inches, depth 960 feet, screens opposite sands between 499 and 870 feet.

Aug. 28, 1946	31.25	Aug. 30, 1950	39.49	Jan. 20, 1956	45.56
Mar. 3, 1948	33.96	Jan. 15, 1951	37.52	Jan. 25, 1957	49.74
Jan. 5, 1949	36.70	Jan. 11, 1952	40.46	Jan. 22, 1958	48.38
Aug. 26	38.19	Jan. 15, 1953	41.70		
Jan. 17, 1950	36.96	Jan. 31, 1955	44.56		



WATER-LEVEL MEASUREMENTS IN BRAZORIA COUNTY--CONTINUED

429. Lat. 29°11', long. 95°22'. Diameter 18 to 12 inches, depth 324 feet. Casing slotted opposite sands below 60 feet.

Date	Water level	Date	Water level	Date	Water level
Nov. 14, 1946	5.73	Jan. 17, 1950	6.59	Jan. 11, 1952	10.18
Mar. 3, 1948	5.41	Aug. 30	11.23	Aug. 14	9.67
Jan. 5, 1949	9.62	Jan. 15, 1951	10.42	Jan. 15, 1953	8.20

432. Lat. 29°13', long. 95°25'. Diameter 4 inches, depth 618 feet, screened from 594 to 617 feet.

Oct. 7, 1946	8.84	Jan. 16, 1951	16.62	Jan. 31, 1955	24.51
Mar. 3, 1948	15.89	Aug. 22	17.41	Aug. 22	28.64
Dec. 31	11.75	Aug. 13, 1952	18.39	Jan. 19, 1956	30.85
Aug. 25, 1949	11.46	Jan. 14, 1953	25.10	Aug. 9	34.00
Jan. 23, 1950	13.19	July 23	20.60	Jan. 28, 1957	43.82
Aug. 25	15.22	Aug. 11, 1954	24.83	Aug. 8	27.48

438. Lat. 29°12', long. 95°25'. Diameter 4 inches, depth 807 feet, screened from 785 to 807 feet.

Oct. 7, 1946	13.19	Aug. 22, 1951	23.97	Aug. 22, 1955	30.59
Mar. 3, 1948	15.80	Jan. 10, 1952	24.02	Jan. 19, 1956	31.12
Dec. 31	17.96	Aug. 13	26.88	Aug. 9	33.18
Aug. 29, 1949	18.64	Jan. 14, 1953	25.45	Jan. 28, 1957	34.39
Jan. 23, 1950	18.14	July 23	27.18	Aug. 8	34.04
Aug. 30	20.41	Aug. 11, 1954	28.94	Jan. 30, 1958	35.79
Jan. 16, 1951	21.33	Jan. 31, 1955	29.43		

439. Lat. 29°12', long. 95°25'. Diameter 4 inches, depth 628 feet, screened from 588 to 621 feet.

Mar. 3, 1948	17.10	Aug. 13, 1952	20.97	Aug. 9, 1956	60.91
Dec. 31	12.99	July 23, 1953	28.65	Jan. 28, 1957	51.86
Jan. 23, 1950	14.73	Aug. 29, 1954	43.27	Aug. 8	71.49
Jan. 16, 1951	19.60	Jan. 31, 1955	41.69	Jan. 30, 1958	60.43
Aug. 22	19.88	Aug. 22	49.91		
Jan. 10, 1952	17.51	Jan. 19, 1956	47.70		



WATER-LEVEL MEASUREMENTS IN BRAZORIA COUNTY--CONTINUED

439a. Lat. 29°13', long. 95°26'. Diameter 4 inches.

Date	Water level	Date	Water level	Date	Water level
Mar. 3, 1948	17.92	Aug. 22, 1951	20.66	Aug. 22, 1955	43.75
Dec. 31	13.72	Jan. 10, 1952	18.24	Jan. 19, 1956	44.75
Aug. 29, 1949	13.50	Aug. 13	21.37	Aug. 9	52.88
Jan. 23, 1950	15.35	July 23, 1953	27.79	Jan. 28, 1957	48.59
Aug. 30	19.37	Aug. 11, 1954	38.01	Aug. 8	60.53
Jan. 16, 1951	20.20	Jan. 31, 1955	37.10	Feb. 5, 1958	54.00

440. Lat. 29°08', long. 95°30'. Diameter 4½ inches, depth 812 feet, screened from 788 to 812 feet.

Mar. 3, 1948	8.70	Jan. 14, 1953	16.30	Jan. 25, 1956	23.86
Jan. 5, 1949	10.09	July 24	18.52	Aug. 9	26.23
Jan. 20, 1950	10.35	Jan. 27, 1954	18.29	Jan. 31, 1957	26.57
Aug. 24	11.96	Aug. 11	22.17	Jan. 30, 1958	28.27
Feb. 5, 1951	13.89	Jan. 28, 1955	22.08		
Jan. 10, 1952	15.56	Aug. 26,	24.32		

440a. Lat. 29°09', long. 95°29'. Diameter 4 inches.

Mar. 3, 1948	10.89	Feb. 5, 1951	16.65	July 28, 1953	21.26
Jan. 5, 1949	12.34	Aug. 22	17.48	Jan. 27, 1954	20.60
Aug. 24	15.58	Jan. 10, 1952	17.94	Aug. 26,	26.42
Jan. 20, 1950	12.74	Aug. 13	21.04	Jan. 25, 1956	26.14
Aug. 24	14.44	Jan. 14, 1953	19.76		

441. Lat. 29°08', long. 95°31'. Diameter 4 inches, depth 600 feet.

Oct. 16, 1946	13.19	Aug. 24, 1949	15.96	Feb. 5, 1951	15.66
Mar. 3, 1948	14.58	Jan. 20, 1950	15.71	Aug. 22	16.22
Jan. 5, 1959	15.95	Aug. 24	15.88	Jan. 10, 1952	16.78

449. Lat. 29°05', long. 95°29'.

July 1, 1941 +	1.0	Aug. 22, 1951	12.40	Aug. 26, 1955	23.05
Nov. 8, 1946	4.16	Jan. 10, 1952	13.39	Jan. 30, 1956	22.90
Jan. 10, 1949	8.79	Aug. 13	15.14	Aug. 9	25.18
Aug. 24	10.13	Jan. 14, 1953	15.14	Jan. 28, 1957	25.90
Jan. 23, 1950	8.99	July 28	16.43	Aug. 7	26.08
Aug. 24	10.28	Aug. 11, 1954	19.80	Feb. 5, 1958	27.16
Jan. 16, 1951	11.77	Jan. 28, 1955	21.06		

WATER-LEVEL MEASUREMENTS IN BRAZORIA COUNTY--CONTINUED

455. Lat. 29°09', long. 95°26'. Diameter 6 inches, depth 413 feet, screened from 393 to 413 feet.

Date	Water level	Date	Water level	Date	Water level
Oct. 10, 1946	15.26	Jan. 23, 1950	18.24	Jan. 23, 1951	18.36
Aug. 26, 1949	17.34	Aug. 29	18.02	Aug. 23	18.94

457. Lat. 29°09', long. 95°26'.

Jan. 23, 1950	32.18	Jan. 25, 1951	37.80	Jan. 10, 1952	43.2
Aug. 29	37.70	Aug. 23	43.64	Jan. 27, 1954	42.44

514. Lat. 29°22', long. 95°28'. Diameter 2 inches, depth 792 feet.

Apr. 13, 1931	8.68	Aug. 29, 1950	8.13	Jan. 16, 1953	7.89
July 31, 1946	7.12	Jan. 16, 1951	8.22	July 22	7.82
Dec. 31, 1948	7.10	Aug. 24	8.06	Jan. 28, 1954	8.16
Aug. 29, 1949	7.33	Jan. 14, 1952	7.89		
Jan. 23, 1950	7.98	Sept. 3	7.90		

515. Lat. 29°22', long. 95°28'. Diameter 2 inches, depth 900 feet.

May 22, 1939	9.87	Aug. 24, 1951	33.80	Aug. 26, 1955	49.99
July 31, 1946	19.07	Jan. 14, 1952	35.12	Jan. 19, 1956	50.60
Dec. 31, 1948	26.34	Sept. 3	37.06	Aug. 2	59.06
Aug. 29, 1949	28.85	Jan. 16, 1953	38.20	Jan. 28, 1957	55.76
Jan. 23, 1950	29.01	July 22	40.04	Aug. 8	53.63
Aug. 29	31.33	Jan. 28, 1954	41.86		
Jan. 16, 1951	31.99	Jan. 21, 1955	45.66		

516. Lat. 29°22', long. 95°28'. Diameter 2 inches, depth approximately 600 feet.

July 31, 1946	4.50	Jan. 16, 1951	7.33	July 22, 1953	8.40
Dec. 31, 1948	8.36	Aug. 24	10.75	Jan. 28, 1954	4.56
Aug. 29, 1949	5.50	Jan. 14, 1952	8.68	Jan. 21, 1955	8.29
Jan. 23, 1950	3.21	Sept. 3	9.60	Aug. 26	12.58
Aug. 29	6.64	Jan. 16, 1953	7.66	Jan. 19, 1956	9.06

WATER-LEVEL MEASUREMENTS IN BRAZORIA COUNTY--CONTINUED

520. Lat. 29°24', long. 95°26'. Diameter 4 inches, depth approximately 350 feet.

Date	Water level	Date	Water level	Date	Water level
July 30, 1946	17.01	Dec. 31, 1948	18.86	Jan. 25, 1950	19.37
Mar. 3, 1948	17.46	Aug. 29, 1949	19.26	Jan. 16, 1951	19.99

521. Lat. 29°24', long. 95°27'. Diameter 4 inches, depth approximately 350 feet.

July 31, 1946	24.40	Dec. 31, 1948	31.83	Jan. 25, 1950	34.64
Mar. 3, 1948	28.30				

522. Lat. 29°26', long. 95°26'. Diameter 26 to 10 inches, depth 906 feet, screens opposite sands below 361 feet.

Apr. 10, 1931	7.92	Jan. 25, 1950	28.70	Jan. 28, 1954	31.87
May 22, 1939	17.36	Aug. 29	30.83	Jan. 19, 1956	40.85
July 31, 1946	23.00	Jan. 16, 1951	30.59	Aug. 2	41.15
Mar. 3, 1948	25.11	Aug. 24	32.15	Jan. 28, 1957	44.34
Dec. 31	28.04	Jan. 14, 1952	32.38	Aug. 8	53.63
Aug. 29, 1949	26.86	Jan. 16, 1953	29.42		

526. Lat. 29°24', long. 95°18'. Diameter 4 inches, depth 666 feet, screened from 631 to 663 feet.

Aug. 27, 1946	28.87	Aug. 23, 1951	48.32	Jan. 29, 1954	50.21
Jan. 4, 1949	47.99	Jan. 11, 1952	48.43	Aug. 19, 1955	54.43
Aug. 19	48.28	Aug. 14	50.97	Jan. 30, 1956	55.42
Aug. 21, 1950	47.70	Jan. 15, 1953	50.03	Aug. 2	56.27
Jan. 12, 1951	47.29	July 22	51.11		

537. Lat. 29°20', long. 95°17'. Diameter 4 inches, depth 473 feet.

July 30, 1946	22.88	Jan. 11, 1952	35.34	Aug. 19, 1955	44.94
Jan. 4, 1949	26.37	Aug. 14	39.05	Jan. 20, 1956	44.9
Jan. 25, 1950	30.27	July 22, 1953	41.46	Aug. 3	45.64
Aug. 31	29.00	Jan. 29, 1954	42.11	Jan. 25, 1957	47.06
Jan. 16, 1951	28.96	Aug. 4	47.72	Aug. 12	48.01
Aug. 23	33.40	Jan. 31, 1955	46.53	Jan. 22, 1958	48.25



WATER-LEVEL MEASUREMENTS IN BRAZORIA COUNTY--CONTINUED

544. Lat. 29°17', long. 95°17'. Diameter 26 inches, depth 700 feet.

Date	Water level	Date	Water level	Date	Water level
Aug. 29, 1946	13.78	Aug. 21, 1950	24.82	Jan. 11, 1952	25.49
Jan. 6, 1949	26.35	Jan. 16, 1951	24.95		
Aug. 19	25.58	Aug. 23	28.33		

552. Lat. 29°18', long. 95°15'. Diameter 4 inches, depth 226 feet.

July 19, 1946	7.98	Jan. 11, 1952	8.27	Jan. 20, 1956	10.23
Jan. 3, 1949	7.20	Aug. 14	7.80	Aug. 3	13.96
Aug. 19	6.72	Jan. 15, 1953	7.89	Jan. 25, 1957	14.61
Jan. 16, 1950	6.55	July 23	8.41	Aug. 12	15.28
Aug. 21	6.85	Jan. 29, 1954	7.17	Jan. 22, 1958	14.55
Jan. 12, 1951	7.30	Aug. 4,	8.71		
Aug. 23	8.10	Aug. 19, 1955	10.24		

554. Lat. 29°19', long. 95°14'. Diameter 4 inches, depth 400 feet.

July 25, 1946	24.80	Jan. 11, 1952	56.57	Jan. 20, 1956	67.34
Jan. 3, 1949	30.87	Aug. 14	60.72	Aug. 3	68.19
Aug. 19	31.55	Jan. 15, 1953	61.39	Jan. 25, 1957	71.70
Jan. 16, 1950	32.29	Jan. 29, 1954	62.83	Aug. 12	71.26
Aug. 21	33.46	Aug. 4	67.81	Jan. 22, 1958	72.31
Jan. 12, 1951	33.76	Jan. 31, 1955	67.40		
Aug. 23	47.44	Aug. 19	71.33		

555. Lat. 29°20', long. 95°13'. Diameter 4 inches, depth approximately 700 feet.

Jan. 3, 1949	72.10	Aug. 23, 1951	75.32	Jan. 20, 1956	92.18
Aug. 19	73.40	Jan. 11, 1952	87.98	Jan. 25, 1957	102.84
Jan. 16, 1950	73.64	Aug. 14	90.19	Jan. 22, 1958	98.24
Aug. 21	71.19	Jan. 29, 1954	88.78		
Jan. 12, 1951	76.98	Jan. 31, 1955	91.59		

559. Lat. 29°20', long. 95°13'. Diameter 16 to 10 inches, depth 1,185 feet, screened opposite sands between 344 and 906 feet.

Aug. 28, 1946	46.27	Jan. 12, 1951	55.54	Aug. 4, 1954	66.73
Mar. 3, 1948	50.06	Aug. 23	56.75	Aug. 19, 1955	69.24
Jan. 3, 1949	52.34	Jan. 11, 1952	59.70	Jan. 20, 1956	69.71
Aug. 19	53.08	Jan. 15, 1953	62.44	Aug. 3	71.24
Jan. 16, 1950	53.57	July 23	64.46	Jan. 25, 1957	73.24
Aug. 21	55.48	Jan. 29, 1954	64.89		

WATER-LEVEL MEASUREMENTS IN BRAZORIA COUNTY--CONTINUED

607. Lat. 29°30', long. 95°19'. Diameter 4 inches, depth approximately 200 feet.

Date	Water level	Date	Water level	Date	Water level
July 19, 1946	7.78	Aug. 23, 1951	10.0	Jan. 19, 1956	13.20
Jan. 4, 1949	9.18	Jan. 14, 1952	10.50	Jan. 28, 1957	14.55
Jan. 17, 1950	7.75	Aug. 14	9.43	Feb. 5, 1958	12.26
Aug. 29	9.30	Jan. 16, 1953	9.36		
Feb. 5, 1951	11.6	Aug. 19, 1955	12.02		

608. Lat. 29°30', long. 95°19'. Diameter 7 inches, depth 632 feet, screened from 564 to 632 feet.

July 19, 1946	102.31	Jan. 17, 1950	112.64	Aug. 23, 1951	119.88
Jan. 4, 1949	109.73	Aug. 29	114.42		
Aug. 18	110.88	Feb. 5, 1951	115.35		

612. Lat. 29°34', long. 95°17'. Diameter 20 to 14 inches, depth 1,773 feet, casing slotted opposite sands between 350 and 1,300 feet.

Mar. 11, 1947	83.62	Feb. 21, 1951	108.91	Sept. 27, 1954	135.10
Dec. 15	89.93	June 13	114.95	Dec. 17	134.72
Feb. 5, 1948	89.94	Sept. 18	118.91	Feb. 9, 1955	132.55
Sept. 21	98.87	Dec. 13	116.39	Sept. 21	137.13
Feb. 8, 1949	97.16	Feb. 5, 1952	115.89	Dec. 8	135.68
June 30	97.11	June 17	117.14	Feb. 16, 1956	134.18
Sept. 20	104.50	Sept. 17	120.02	Sept. 14	143.84
Dec. 22	102.51	Dec. 30	123.51	Dec. 12	141.70
Feb. 17, 1950	102.34	Feb. 5, 1953	121.07	Feb. 20, 1957	140.08
June 12	103.15	Sept. 28	128.99	Sept. 11	142.86
Sept. 27	108.81	Dec. 21	118.44	Dec. 11	141.58
Dec. 15	109.10	Feb. 18, 1954	127.12	Feb. 26, 1958	140.11

612a. Lat. 29°32', long. 95°16'. Diameter 18 inches, depth 1,100 feet. Slotted opposite all sands below 400 feet.

Sept. 27, 1954	142.93	Dec. 9, 1955	136.25	Feb. 20, 1957	138.78
Dec. 17	133.70	Feb. 16, 1956	134.31	Sept. 11	148.83
Feb. 9, 1955	131.83	Sept. 14	144.34	Dec. 11	140.32
Sept. 21	137.50	Dec. 12	140.66	Feb. 26, 1958	138.81

WATER-LEVEL MEASUREMENTS IN BRAZORIA COUNTY--CONTINUED

622. Lat. 29°30', long. 95°13'. Diameter 4 inches, depth 495 feet, screened from 452 to 482 feet.

Date	Water level	Date	Water level	Date	Water level
July 1, 1946	89.85	Jan. 14, 1952	115.31	Jan. 19, 1956	129.20
Jan. 3, 1949	103.95	Jan. 15, 1953	117.85	Aug. 2	140.72
Aug. 18	107.56	July 22	123.16	Jan. 25, 1957	133.52
Jan. 16, 1950	107.12	Jan. 28, 1954	120.66	Aug. 12	139.03
Aug. 21	112.96	Aug. 4	132.42	Feb. 5, 1958	133.70
Jan. 12, 1951	111.54	Jan. 21, 1955	125.38		
Aug. 24	119.62	Aug. 22	133.87		

623. Lat. 29°30', long. 95°15'. Diameter 8 inches, depth 591 feet.

June 21, 1946	94.01	Aug. 24, 1951	123.00	Aug. 22, 1955	136.06
Mar. 3, 1948	102.12	Jan. 14, 1952	118.53	Jan. 19, 1956	131.28
Jan. 3, 1949	107.98	Jan. 15, 1953	120.86	Aug. 2	143.17
Aug. 18	111.45	July 22	125.91	Jan. 25, 1957	136.92
Jan. 16, 1950	110.95	Jan. 28, 1954	123.38	Aug. 12	143.83
Aug. 21	116.51	Aug. 11	134.50	Feb. 5, 1958	137.31
Jan. 12, 1951	115.23	Jan. 21, 1955	128.79		

625. Lat. 29°30', long. 95°13'. Diameter 8 inches, depth 417 feet.

June 21, 1946	67.19	Aug. 30, 1950	71.46	Jan. 15, 1953	61.48
Jan. 3, 1949	73.01	Feb. 5, 1951	79.70	July 22	52.40
Aug. 18	73.21	Aug. 23	74.75	Jan. 28, 1954	63.61
Jan. 16, 1950	71.57	Jan. 14, 1952	79.76		

630. Lat. 29°29', long. 95°15'. Diameter 4 inches, depth 410 feet, screened from 341 to 371 feet.

Aug. 27, 1935	20.0	Jan. 14, 1952	83.31	Jan. 19, 1956	92.30
July 1, 1946	65.41	Jan. 15, 1953	85.56	Aug. 2	93.29
Jan. 3, 1949	74.00	July 22	86.64	Jan. 25, 1957	95.26
Aug. 18	75.79	Jan. 28, 1954	86.72	Aug. 12	95.25
Jan. 16, 1950	77.04	Aug. 4	89.24	Feb. 5, 1958	95.31
Aug. 30	78.85	Jan. 21, 1955	90.22		
Aug. 24, 1951	82.40	Aug. 22	91.80		



WATER-LEVEL MEASUREMENTS IN BRAZORIA COUNTY--CONTINUED

639. Lat. 29°29', long. 95°20'. Diameter 6 inches, depth 480 feet, screened from 440 to 480 feet.

Date	Water level	Date	Water level	Date	Water level
July 19, 1946	58.48	Aug. 14, 1952	73.86	Aug. 2, 1956	83.74
Jan. 4, 1949	64.50	July 22, 1953	75.83	Jan. 23, 1957	85.04
Aug. 18	66.08	Jan. 28, 1954	76.77	Aug. 12	85.72
Jan. 17, 1950	67.45	Aug. 11	78.78	Feb. 5, 1958	86.08
Aug. 29	68.82	Aug. 19, 1955	80.98		
Jan. 14, 1952	72.60	Jan. 19, 1956	81.95		

643. Lat. 29°30', long. 95°20'. Diameter 6 inches, depth 300 feet.

July 18, 1946	3.60	Aug. 23, 1951	8.60	Jan. 21, 1955	5.64
Jan. 4, 1949	6.27	Jan. 14, 1952	6.23	Aug. 19	7.16
Aug. 18	5.26	Aug. 14	6.36	Jan. 19, 1956	6.08
Jan. 17, 1950 +	0.19	July 22, 1953	6.48	Aug. 2	7.84
Aug. 29	6.91	Jan. 28, 1954	1.18	Jan. 28, 1957	7.81
Feb. 5, 1951	5.42	Aug. 11	4.72		

644. Lat. 29°30', long. 95°20'. Diameter 9 inches, depth 194 feet, screened from 172 to 194 feet.

July 18, 1946	12.27	Jan. 17, 1950	12.08	Aug. 23, 1951	14.60
Jan. 4, 1949	12.88	Aug. 29	12.52	Jan. 14, 1952	14.86
Aug. 18	13.37	Feb. 5, 1951	13.83		

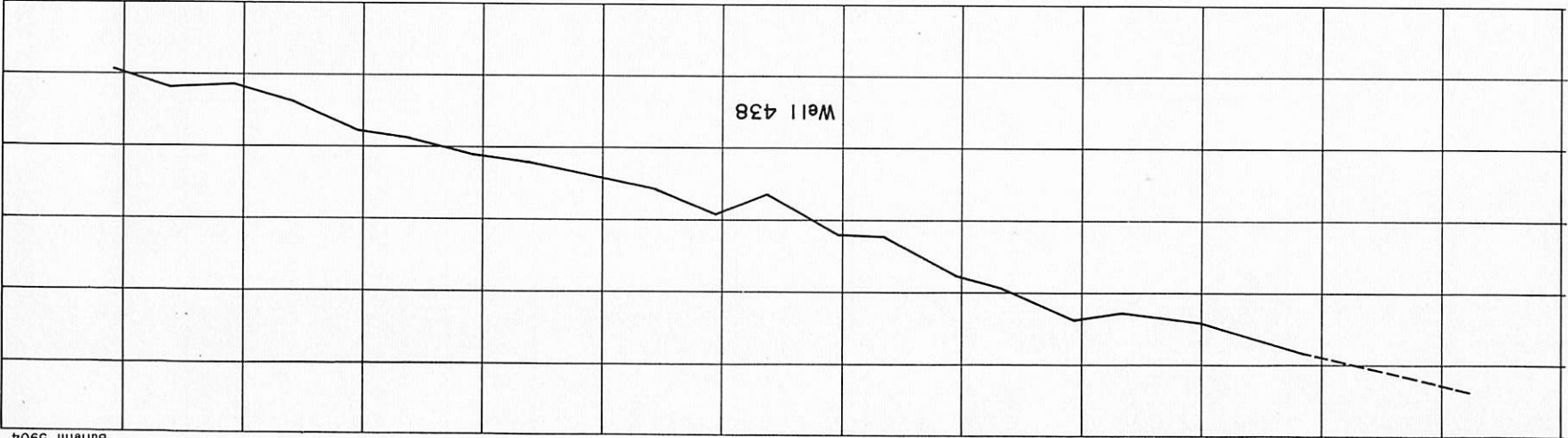
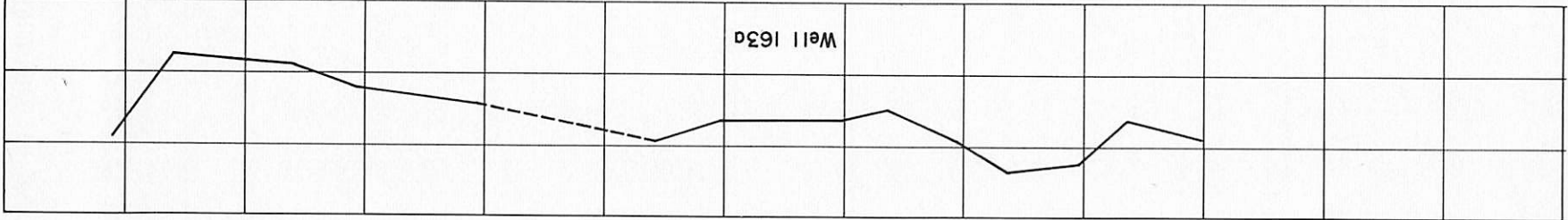
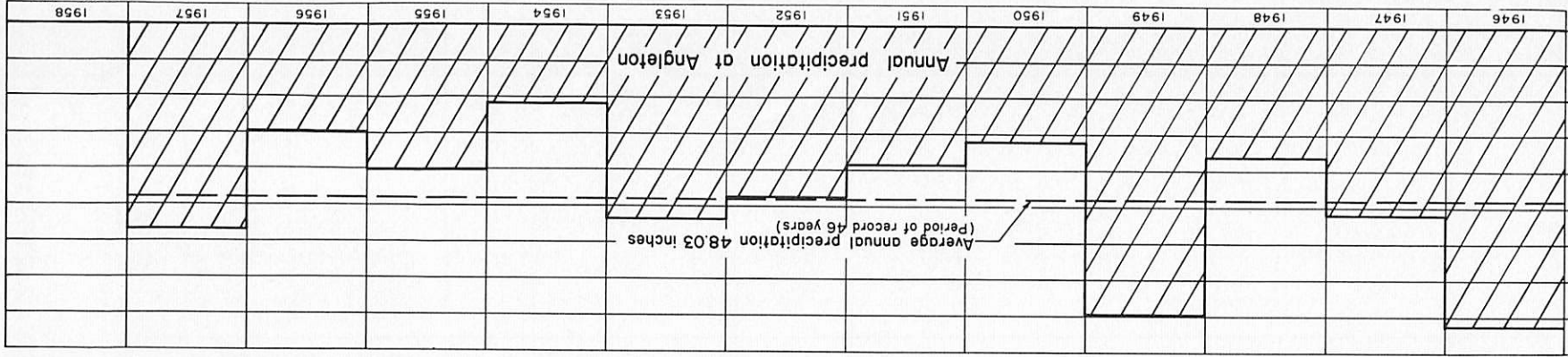
645. Lat. 29°30', long. 95°20'. Diameter 8 inches, depth 195 feet, screened from 159 to 195 feet.

July 18, 1946	10.15	Jan. 14, 1952	13.13	Aug. 19, 1955	14.02
Jan. 4, 1949	11.19	Aug. 14	12.14	Jan. 19, 1956	15.48
Jan. 17, 1950	10.35	July 22, 1953	12.13	Aug. 2	15.56
Aug. 29	10.78	Jan. 28, 1954	11.65	Jan. 28, 1957	17.98
Feb. 5, 1951	12.12	Aug. 11	12.50	Feb. 5, 1958	17.07
Aug. 23	12.85	Jan. 21, 1955	13.76		

a Pumping

+ Indicates water level, in well, above land surface datum.

Precipitation in inches  
Water level in feet below land-surface datum



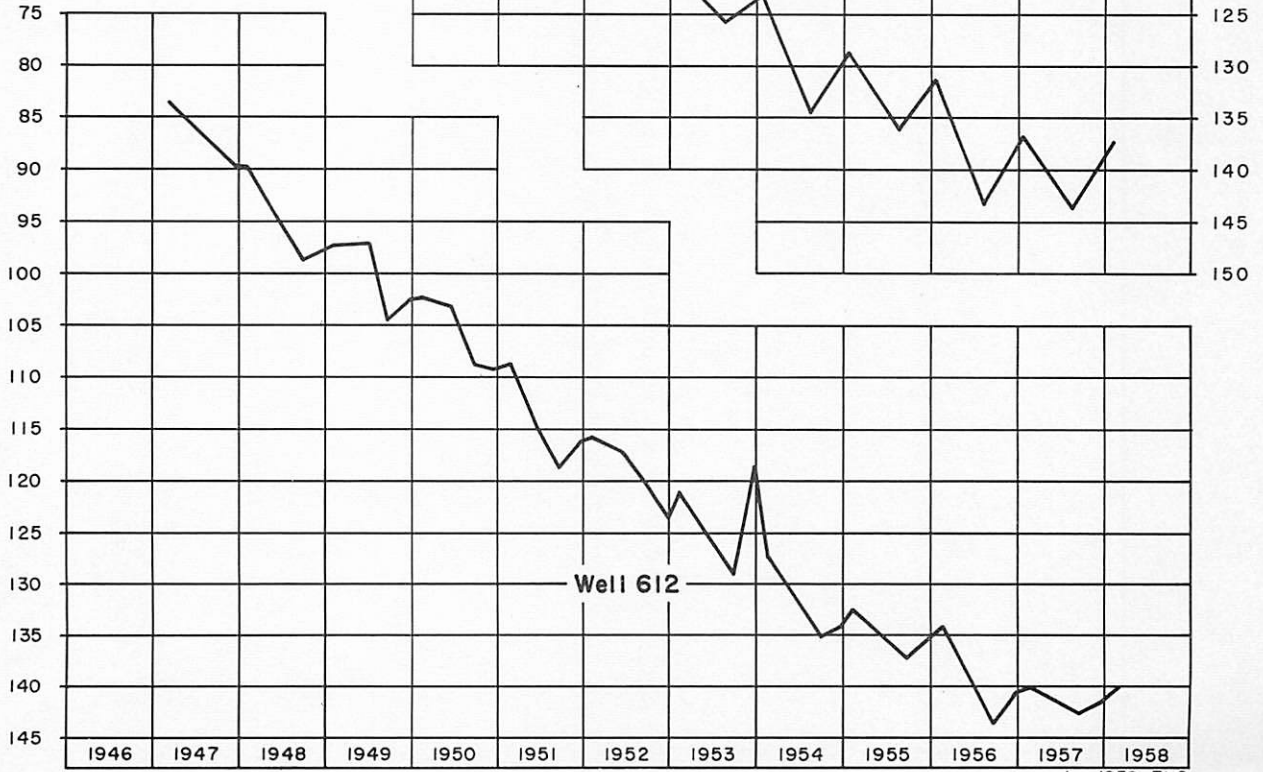
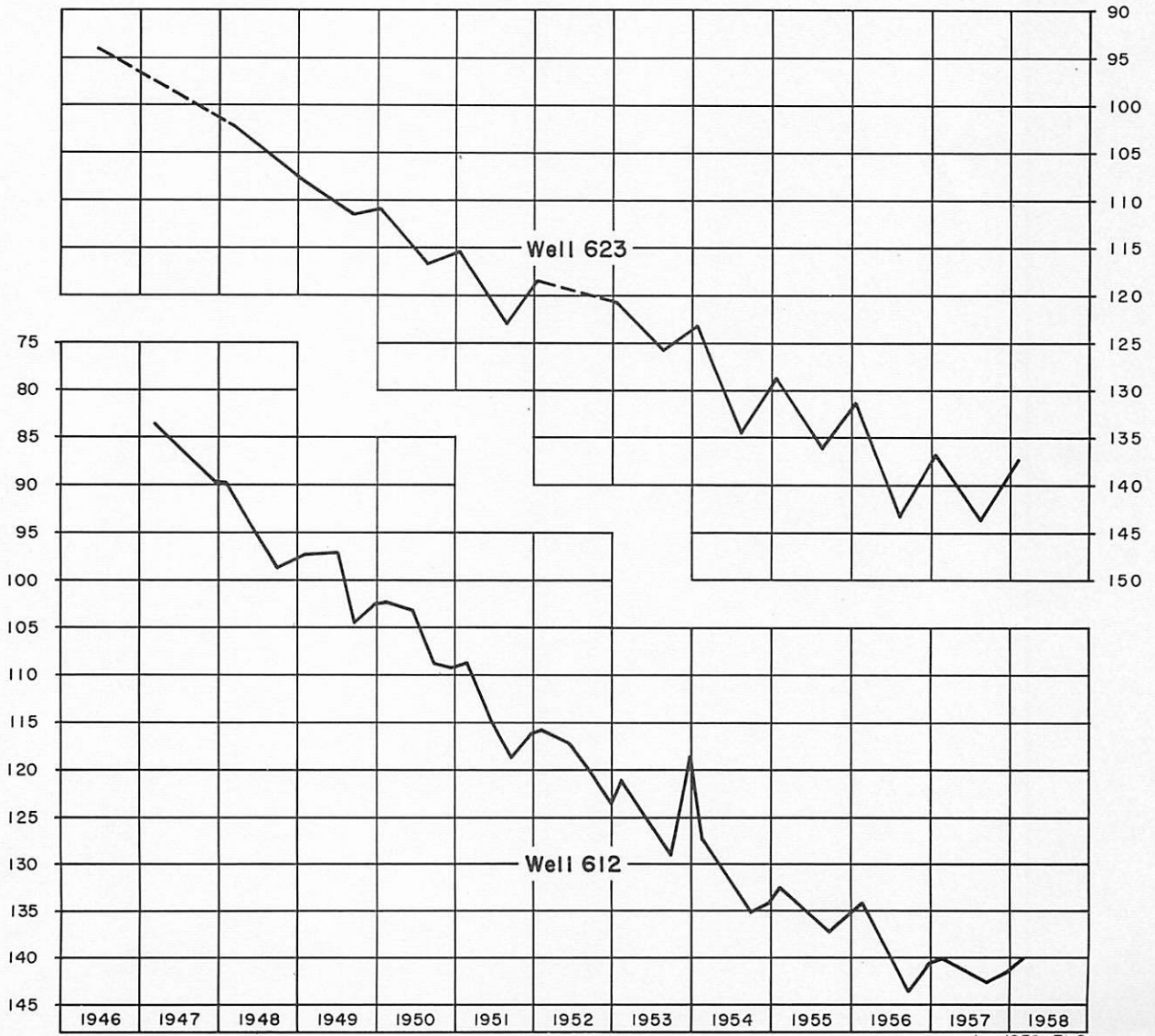
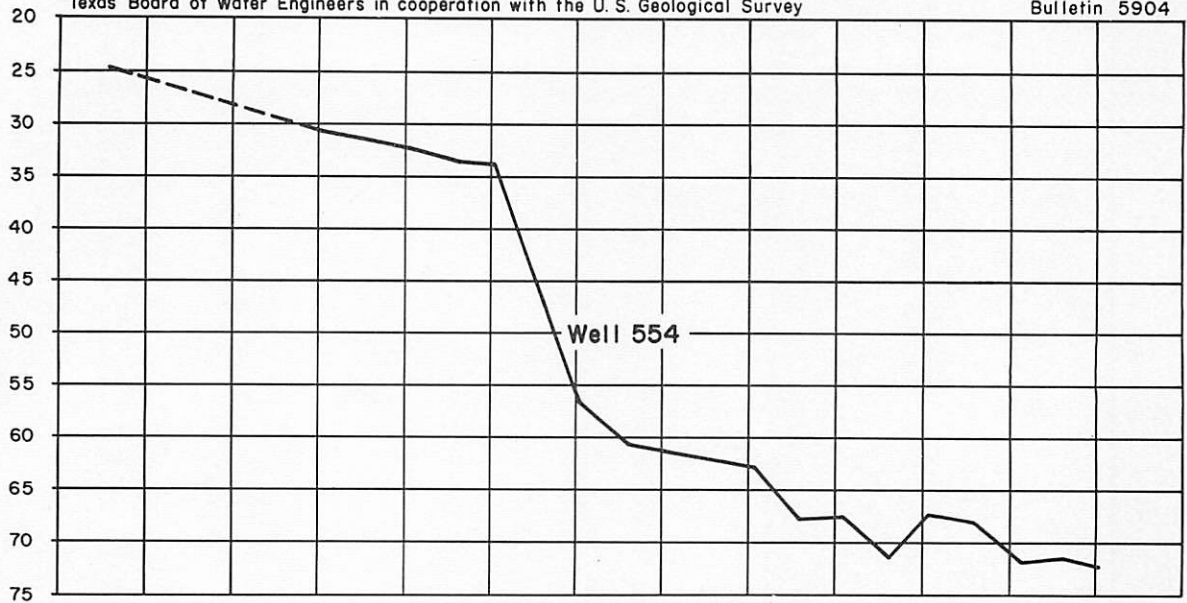
FLUCTUATION OF WATER LEVELS IN WELL 438 AND WELL 163a, BRAZORIA COUNTY, AND ANNUAL PRECIPITATION AT ANGLETON, TEXAS

Jan. 1959 - F.L.O.

Texas Board of Water Engineers in cooperation with the U.S. Geological Survey

Bulletin 5904

Water level in feet below land-surface datum

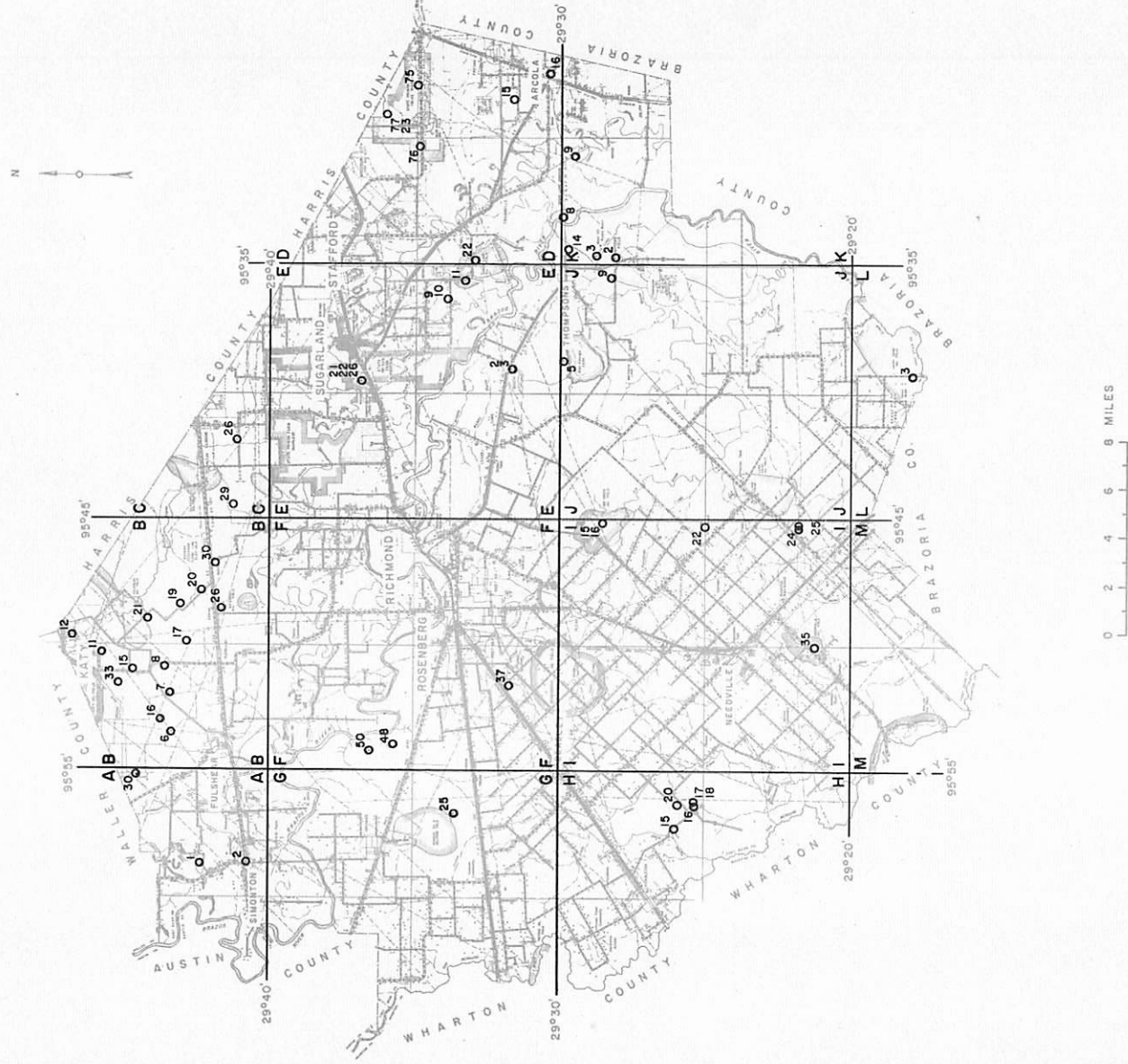


FLUCTUATION IN WATER LEVELS IN WELL 554, WELL 623, AND WELL 612, BRAZORIA COUNTY, TEXAS

Jan. 1959-FLO



F O R T B E N D C O U N T Y



BASE MAP FROM TEXAS STATE HIGHWAY DEPARTMENT

FLO

OBSERVATION WELLS IN FORT BEND COUNTY, TEXAS  
DECEMBER 1958

WATER-LEVEL MEASUREMENTS IN FORT BEND COUNTY, TEXAS

1. Lat. 29°42', long. 95°58'. Diameter 18 inches, depth 205 feet. Screened from 59 to 103, and 145 to 202 feet.

Date	Water Level	Date	Water Level	Date	Water Level
Sept. 11, 1931	27.6	Dec. 21, 1939	28.8	Apr. 26, 1940	28.9
Mar. 15, 1939	27.3	Mar. 12, 1940	29.8	Oct. 1	29.6

6. Lat. 29°43', long. 95°53'. Diameter 16 inches, depth 596 feet.

Mar. 15, 1939	63.1	Oct. 1, 1940	64.8	Oct. 24, 1941	61.4
Sept. 19	63.0	Jan. 23, 1941	61.8	Jan. 15, 1942	60.0
Dec. 21	61.0	Mar. 11	61.5	Mar. 17	59.5
Apr. 26, 1940	60.1	May 15	60.6	Apr. 12, 1943	59.4

7. Lat. 29°43', long. 95°52'. Diameter 24 to 6 inches, depth 337 feet.

Mar. 3, 1931	53.21	Nov. 8, 1943	64.00	Mar. 21, 1951	68.76
Mar. 18, 1933	53.34	Mar. 29, 1944	59.70	Nov. 13	77.56
Jan. 6, 1939	57.44	Oct. 5	68.30	Mar. 11, 1952	72.58
Mar. 10	56.46	Mar. 16, 1945	60.45	Nov. 21	79.42
Sept. 19	64.74	Nov. 1	65.53	Mar. 25, 1953	73.86
Dec. 21	60.04	Mar. 21, 1946	61.55	Nov. 19	79.46
Mar. 12, 1940	58.44	Mar. 28, 1947	61.48	Mar. 15, 1954	75.17
Oct. 1	64.40	Apr. 14	61.10	Mar. 11, 1955	77.02
Jan. 23, 1941	60.60	Mar. 19, 1948	63.82	Nov. 15	83.17
Mar. 11	59.97	Nov. 16	71.47	Mar. 9, 1956	79.39
Oct. 24	60.94	Jan. 25, 1949	68.42	Nov. 16	85.70
Jan. 19, 1942	58.84	Mar. 7	67.14	Mar. 13, 1957	82.75
Mar. 17	58.37	Nov. 23	72.35	Dec. 2	86.18
Sept. 21	62.94	Mar. 13, 1950	66.93	Mar. 17, 1958	83.48
Apr. 12, 1943	60.60	Nov. 16	74.34		

11. Lat. 29°45', long. 95°50'. Diameter 28 to 12 inches, depth 170 feet.

Aug. 11, 1932	55.56	Jan. 23, 1941	53.04	Mar. 29, 1944	52.23
Sept. 29	55.29	Mar. 11	52.53	Oct. 4	58.95
Mar. 18, 1933	46.46	May 15	51.67	Mar. 16, 1945	54.67
Jan. 6, 1939	49.92	Oct. 24	53.52	Nov. 1	57.97
Mar. 10	48.81	Jan. 15, 1942	51.66	Mar. 21, 1946	54.29
Sept. 19	56.64	Mar. 17	50.57	Mar. 28, 1947	54.43
Dec. 21	52.44	Sept. 21	55.25	Mar. 19, 1948	56.45
Mar. 12, 1940	51.10	Apr. 12, 1943	50.45	Nov. 16	65.57
Oct. 4	58.86	Nov. 8	55.74	Jan. 25, 1949	63.34

Continued



WATER-LEVEL MEASUREMENTS IN FORT BEND COUNTY -- CONTINUED

11. Continued

Date	Water Level	Date	Water Level	Date	Water Level
Mar. 7, 1949	62.50	Mar. 11, 1952	68.85	Nov. 15, 1955	76.91
Nov. 23	66.72	Nov. 21	72.51	Mar. 9, 1956	75.45
Mar. 13, 1950	65.14	Mar. 25, 1953	69.87	Nov. 16	80.01
Nov. 16	68.89	Nov. 23	73.19	Mar. 13, 1957	77.39
Mar. 21, 1951	65.92	Mar. 15, 1954	72.11	Dec. 2	79.76
Nov. 13	71.22	Mar. 11, 1955	73.83	Mar. 19, 1958	79.19

12. Lat. 29°46', long. 95°50'. Diameter 18 inches.

Aug. 11, 1932	24.50	Mar. 15, 1939	26.51	Mar. 12, 1940	29.44
Sept. 29	25.09	Sept. 19	27.55	Apr. 26	29.40
Mar. 18, 1933	25.91	Dec. 21	28.42	May 15, 1941	21.76

15. Lat 29°44', long. 95°51'. Diameter 24 to 10 inches, depth 172 feet.

Mar. 24, 1931	51.79	Oct. 24, 1941	61.88	Mar. 28, 1947	69.28
May 15	50.80	Jan. 15, 1942	60.36	Mar. 19, 1948	64.56
Sept. 29, 1932	57.55	Mar. 17	59.54	Nov. 16	70.16
Mar. 18, 1933	53.57	Sept. 21	63.30	Mar. 7, 1949	68.05
Jan. 6, 1939	58.15	Apr. 12, 1943	59.05	Nov. 23	70.65
Mar. 10	57.17	Nov. 8	63.61	Mar. 13, 1950	69.94
Sept. 18	63.40	Mar. 29, 1944	62.19	Nov. 16	73.38
Dec. 21	60.52	Oct. 5	66.10	Mar. 15, 1951	71.46
Mar. 12, 1940	59.40	Mar. 10, 1945	59.80	Mar. 11, 1952	74.55
Apr. 26	59.74	Nov. 1	65.64	Nov. 19	78.22
Mar. 11, 1941	61.55	Mar. 21, 1946	68.94	Mar. 15, 1954	77.56
May 15	60.45	29	68.91		

16. Lat. 29°43', long. 95°53'. Diameter 24 inches, depth 337 feet.

Aug. 25, 1931	51.3	Apr. 26, 1940	61.2	Jan. 19, 1942	61.2
Sept. 19, 1939	62.9	Oct. 1	65.1	Mar. 17	60.7
Dec. 21	60.9	Mar. 11, 1941	62.1		
Mar. 12, 1940	62.1	Oct. 24	62.6		

17. Lat. 29°42', long. 95°49'. Diameter 24 to 8 inches, depth 586 feet.

Oct. 1, 1940	60.65	Oct. 24, 1941	54.59	Sept. 21, 1942	56.52
Mar. 11, 1941	53.93	Jan. 19, 1942	52.48	Nov. 8, 1943	56.94
May 16	53.08	Mar. 17	51.88	Mar. 15, 1944	53.38

Continued

WATER-LEVEL MEASUREMENTS IN FORT BEND COUNTY -- CONTINUED

17. Continued

Date	Water Level	Date	Water Level	Date	Water Level
Oct. 5, 1944	62.90	Mar. 19, 1948	57.27	Nov. 16, 1950	68.73
Mar. 16, 1945	54.03	Nov. 19	65.81	Mar. 17, 1951	65.08
Nov. 1	60.72	Mar. 7, 1949	61.59	Nov. 13	73.61
Mar. 29, 1946	54.91	Nov. 23	66.63	Mar. 11, 1952	68.48
Mar. 28, 1947	54.58	Mar. 13, 1950	62.74		

19. Lat. 29°43', long. 95°48'. Diameter 24 inches, depth 545 feet.

Mar. 24, 1931	34.5	Sept. 19, 1939	52.9	Oct. 1, 1940	50.4
Mar. 18, 1933	41.8	Dec. 21	44.1	Jan. 23, 1941	43.6
Jan. 6, 1939	40.8	Mar. 12, 1940	42.0	Mar. 11	42.6
Mar. 10	39.9	Apr. 26	42.1	May 16	41.6

20. Lat. 29°42', long. 95°47'. Diameter 24 to 10 inches, depth 250 feet.

June 11, 1931	43.75	May 16, 1941	37.94	Mar. 28, 1947	36.58
Mar. 18, 1933	34.00	Oct. 22	39.76	Mar. 19, 1948	45.17
Jan. 6, 1939	37.03	Jan. 19, 1942	37.31	Nov. 23, 1949	53.80
Mar. 10	36.25	Mar. 17	36.86	Mar. 13, 1950	50.35
Sept. 19	47.70	Sept. 22	42.02	Nov. 16	58.44
Dec. 21	39.47	Apr. 12, 1943	38.85	Mar. 21, 1951	53.36
Mar. 12, 1940	38.52	Nov. 8	42.34	Nov. 13	64.65
Apr. 26	38.60	Mar. 15, 1944	38.15	Mar. 11, 1952	57.25
Oct. 1	47.10	Mar. 16, 1945	39.25	Mar. 25, 1953	59.42
Jan. 23, 1941	39.75	Nov. 1	44.93		
Mar. 11	38.94	Mar. 29, 1946	39.42		

21. Lat. 29°44', long. 95°49'. Diameter 36 to 10 inches, depth 250 feet.

Mar. 24, 1931	39.40	Mar. 11, 1941	44.99	Nov. 1, 1945	49.90
Aug. 19, 1932	49.45	May 16	43.65	Mar. 29, 1946	44.81
Mar. 18, 1933	40.66	Oct. 24	44.95	Mar. 28, 1947	44.87
Jan. 6, 1939	43.16	Jan. 15, 1942	42.99	Mar. 19, 1948	48.03
Mar. 10	42.48	Mar. 17	42.47	Nov. 16	57.47
Sept. 19	52.35	Sept. 21	47.36	Jan. 25, 1949	53.41
Dec. 21	45.28	Apr. 12, 1943	42.96	Mar. 7	52.32
Mar. 12, 1940	44.43	Nov. 8	48.00	Nov. 23	57.77
Apr. 26	44.58	Mar. 15, 1944	44.10	Mar. 13, 1950	53.29
Oct. 1	51.65	Oct. 4	54.30	Nov. 16	60.37
Jan. 23, 1941	45.41	Mar. 16, 1945	44.82	Mar. 21, 1951	57.60

Continued

WATER-LEVEL MEASUREMENTS IN FORT BEND COUNTY -- CONTINUED

21. Continued

Date	Water Level	Date	Water Level	Date	Water Level
Nov. 13, 1951	66.03	Mar. 25, 1953	61.38	Mar. 11, 1955	65.60
Mar. 11, 1952	59.67	Nov. 19	67.81	Mar. 9, 1956	59.90
Nov. 21	69.18	Mar. 15, 1954	61.98		

26. Lat. 29°41', long. 95°41'. Diameter 26 to 12 inches, depth 657 feet.

Jan. 6, 1939	27.20	Apr. 12, 1943	28.90	Mar. 13, 1950	42.46
Mar. 10	26.57	Nov. 8	33.24	Nov. 16	52.26
Sept. 19	33.20	Mar. 15, 1944	29.84	Mar. 26, 1951	45.11
Dec. 21	29.60	Oct. 4	39.13	Nov. 13	51.28
Mar. 12, 1940	28.91	Mar. 16, 1945	28.08	Mar. 11, 1952	42.26
Apr. 26	32.24	Nov. 1	34.92	Nov. 21	28.35
Oct. 1	33.50	Mar. 29, 1946	29.03	Mar. 25, 1953	25.15
Mar. 11, 1941	30.09	Mar. 28, 1947	31.23	Mar. 15, 1954	42.06
May 16	31.37	Mar. 19, 1948	33.01	Mar. 11, 1955	29.32
Oct. 24	31.03	Jan. 25, 1949	39.18	Mar. 9, 1956	31.27
Jan. 19, 1942	28.69	Mar. 7	39.82	Mar. 25, 1958	33.08
Mar. 17	28.20	May 20	63.60		
Sept. 22	33.15	Nov. 23	47.77		

29. Lat. 29°41', long. 95°44'. Diameter 20 to 14 inches, depth 500 feet, casing slotted opposite sands below 85 feet.

Oct. 1, 1940	34.85	Nov. 1, 1945	32.02	Nov. 13, 1951	57.49
Mar. 11, 1941	29.92	Mar. 29, 1946	31.24	Mar. 11, 1952	48.84
Mar. 17, 1942	28.20	Mar. 19, 1948	28.96	Nov. 21	62.05
Apr. 12, 1943	28.65	Nov. 23, 1949	47.09	Mar. 25, 1953	51.81
Mar. 15, 1944	29.98	Mar. 13, 1950	42.46	Mar. 29, 1954	53.75
Oct. 4	41.33	Nov. 17	51.62		
Mar. 16, 1945	30.95	Mar. 21, 1951	45.39		

30. Lat. 29°44', long. 95°55'. Diameter 16 to 8 inches, depth 334 feet, casing slotted opposite sands below 74 feet. Measurements since Mar. 19, 1958 were made in replacement well.

Oct. 2, 1940	69.70	Apr. 13, 1943	64.52	Mar. 21, 1946	64.80
Jan. 1, 1941	67.24	Nov. 9	66.56	Mar. 24, 1947	64.23
Oct. 27	66.53	Mar. 29, 1944	64.95	Mar. 19, 1948	65.31
Jan. 19, 1942	65.51	Oct. 6	67.00	Nov. 19	70.36
Mar. 17	65.21	Mar. 16, 1945	65.45	Mar. 8, 1949	68.38
Sept. 23	66.05	Nov. 5	66.48	Dec. 1	71.61

Continued



WATER-LEVEL MEASUREMENTS IN FORT BEND COUNTY -- CONTINUED

30. Continued

Date	Water Level	Date	Water Level	Date	Water Level
Mar. 13, 1950	70.66	Mar. 31, 1953	76.48	Mar. 9, 1956	81.61
Nov. 22	73.63	Nov. 24	78.00	Mar. 15, 1957	82.91
Mar. 21, 1951	72.40	Mar. 16, 1954	77.76	Dec. 2	86.58
Mar. 13, 1952	74.00	Mar. 16, 1955	79.49	Mar. 19, 1958	84.65
Nov. 21	78.01	Nov. 17	83.67		

33. Lat. 29°45', long. 95°51'. Diameter 15 inches, depth 346 feet.

Mar. 15, 1939	57.77	Nov. 8, 1943	64.18	Nov. 13, 1951	74.10
Sept. 19	62.90	Mar. 29, 1944	63.10	Mar. 11, 1952	72.85
Dec. 21	60.25	Oct. 5	68.70	Nov. 21	76.59
Mar. 12, 1940	59.50	Mar. 16, 1945	62.86	Mar. 25, 1953	74.62
Apr. 26	59.40	Nov. 1	64.57	Nov. 23	77.04
Oct. 4	65.82	Mar. 28, 1946	62.64	Mar. 15, 1954	76.26
Jan. 23, 1941	61.57	Mar. 28, 1947	63.66	Mar. 11, 1955	77.64
Mar. 11	61.32	Mar. 19, 1948	64.85	Nov. 15	80.7
May 15	60.62	Nov. 19	69.66	Mar. 9, 1956	79.46
Oct. 24	62.35	Mar. 7, 1949	67.56	Nov. 16	83.67
Jan. 19, 1942	60.95	Nov. 23	70.28	Mar. 18, 1957	81.37
Mar. 17	60.30	Mar. 15, 1950	68.43	Dec. 2	84.26
Sept. 22	64.22	Nov. 16	72.17	Mar. 19, 1958	83.08
Apr. 12, 1943	60.05	Mar. 21, 1951	70.31		

75. Lat. 29°34', long. 95°27'. Diameter 6 inches, depth 800 feet.

Dec. 6, 1938	45.29	Jan. 27, 1944	60.04	Feb. 17, 1950	93.51
Mar. 13, 1939	44.89	Sept. 19	63.38	June 12	93.90
May 22	45.38	Dec. 11	64.29	Sept. 27	102.64
Aug. 1	46.34	Jan. 26, 1945	64.34	Dec. 15	101.52
Sept. 28	47.72	Mar. 21	64.53	June 13, 1951	103.43
Dec. 2	48.43	June 27	66.92	Sept. 18	109.08
Jan. 16, 1940	48.60	Jan. 18, 1946	68.55	Dec. 13	108.70
Feb. 21	48.60	July 16	71.49	Feb. 5, 1952	107.70
Aug. 5	50.26	Sept. 16	75.09	June 17	109.25
Nov. 27	52.30	Dec. 13	74.36	Sept. 17	114.94
Feb. 19, 1941	52.04	Feb. 3, 1947	74.50	Dec. 30	114.52
Apr. 5	51.73	Sept. 15	82.11	June 12, 1953	115.33
July 16	51.95	Dec. 15	82.35	Sept. 28	120.54
Nov. 25	53.52	Feb. 5, 1948	81.90	Dec. 21	118.44
Jan. 3, 1942	53.42	Sept. 21	91.73	Feb. 18, 1954	117.67
27	53.58	Dec. 14	91.40	June 25	123.15
July 16	53.96	June 30, 1949	91.91	Dec. 17	127.83
Jan. 22, 1943	56.76	Sept. 20	96.51	Feb. 9, 1955	124.24
June 22	56.80	Dec. 22	94.72	June 17	124.44

WATER-LEVEL MEASUREMENTS IN FORT BEND COUNTY -- CONTINUED

76. Lat. 29°34', long. 95°30'. Diameter 6 inches.

Date	Water Level	Date	Water Level	Date	Water Level
Dec. 6, 1938	30.6	Feb. 19, 1941	34.0	Jan. 27, 1944	34.7
Mar. 13, 1939	30.8	Apr. 5	33.8	Sept. 19	35.8
May 22	31.0	June 3	33.5	Oct. 11	36.5
Aug. 1	31.2	July 16	33.4	Jan. 26, 1945	36.5
Sept. 28	31.9	Nov. 24	33.4	Mar. 21	36.6
Jan. 16, 1940	32.6	Jan. 3, 1942	33.2	June 27	40.6
Feb. 21	32.7	27	33.2	Jan. 18, 1946	39.4
May 3	33.0	July 16	33.0	May 1	39.4
June 28	33.2	Jan. 22, 1943	33.4	Sept. 16	45.1
Aug. 5	33.6	June 22	33.6	Dec. 13	41.2
Sept. 30	34.2	Sept. 13	34.4	Feb. 3, 1947	43.43
Nov. 27	34.4	14	34.4	Mar. 11	43.35

77. Lat. 29°36', long. 95°28'. Diameter 18 inches, depth 800 feet, casing slotted below 240 feet.

Apr. 9, 1945	47.0	Feb. 17, 1950	77.18	Dec. 17, 1954	106.09
Jan. 18, 1946	55.01	Dec. 15	85.42	Feb. 9, 1955	102.03
Feb. 3, 1947	59.82	Feb. 21, 1951	83.60	Dec. 8	105.06
Mar. 11	59.88	June 13	91.93	Feb. 16, 1956	102.95
Dec. 15	67.33	Dec. 13	89.36	Feb. 20, 1957	108.64
Mar. 23, 1948	66.26	Feb. 5, 1952	87.55	Dec. 11	107.14
Dec. 14	76.74	Feb. 5, 1953	92.24	Feb. 26, 1958	104.69
Feb. 8, 1949	74.91	Dec. 22	98.12		
Dec. 22	79.02	Feb. 18, 1954	96.31		

A-2. Lat. 29°40', long. 95°58'. Diameter 6 inches, depth 300 feet.

May 14, 1947	18.50	Aug. 29, 1951	34.97	Jan. 23, 1956	39.99
Mar. 4, 1948	22.68	Aug. 6, 1952	33.53	Aug. 10	41.58
Sept. 7, 1949	30.61	Jan. 20, 1953	36.55	Jan. 21, 1957	43.51
Jan. 31, 1950	29.11	July 20	35.10	Aug. 1	39.83
Sept. 5	31.11	Aug. 2, 1954	39.06	Feb. 3, 1958	38.96
Jan. 19, 1951	32.23	Aug. 17, 1955	40.58		

B-8. Lat. 29°43', long. 95°50'.

Nov. 13, 1951	75.68	Mar. 15, 1954	74.50	Mar. 13, 1957	81.15
Mar. 11, 1952	71.48	Mar. 11, 1955	77.67	Dec. 2	86.03
Nov. 21	78.28	Nov. 15	81.73	Mar. 17, 1958	81.84
Mar. 25, 1953	72.20	Mar. 9, 1956	78.76		
Nov. 19	77.81	Nov. 16	85.63		



WATER-LEVEL MEASUREMENTS IN FORT BEND COUNTY -- CONTINUED

B-26. Lat. 29°41', long. 95°48'. Diameter 6 inches, depth 131 feet.

Date	Water Level	Date	Water Level	Date	Water Level
Apr. 18, 1947	47.05	Aug. 29, 1951	93.74	Feb. 2, 1955	69.05
Mar. 4, 1948	50.24	Jan. 16, 1952	63.28	Aug. 17	91.08
Sept. 7, 1949	75.80	Aug. 6	85.25	Jan. 23, 1956	70.12
Jan. 27, 1950	56.36	Jan. 20, 1953	65.66	Aug. 10	103.80
Sept. 5	76.77	July 20	91.05	Feb. 3, 1958	72.39
Jan. 19, 1951	59.08	Feb. 2, 1954	66.18		

B-30. Lat. 29°41', long. 95°46'. Diameter 8 inches, depth 156 feet.

June 2, 1941	40.40	Mar. 4, 1948	43.53	Jan. 16, 1952	58.95
Oct. 22	39.67	Sept. 7, 1949	75.56	Aug. 7	88.98
Jan. 19, 1942	37.22	Sept. 5, 1950	78.50	Jan. 20, 1953	63.8
Mar. 17	36.79	Jan. 19, 1951	62.84	Feb. 2, 1954	61.91
Sept. 22	42.45	Aug. 29	91.41	Jan. 21, 1957	81.53

D-15. Lat. 29°31', long. 95°28'. Diameter 4 inches, depth 584 feet, screened from 560 to 583 feet.

May 15, 1947	54.83	Jan. 25, 1950	64.82	Jan. 15, 1952	76.50
Dec. 31, 1948	63.95	Sept. 7	69.14	Jan. 16, 1953	78.2
Aug. 30, 1949	67.23	Jan. 18, 1951	71.63		

D-16. Lat. 29°30', long. 95°27'. Diameter 4 inches, depth 459 feet.

May 5, 1947	35.19	Feb. 5, 1951	44.98	Aug. 11, 1954	54.52
Dec. 31, 1948	40.42	Jan. 15, 1952	48.40	Aug. 22, 1955	62.20
Aug. 30, 1949	41.47	Jan. 16, 1953	50.71	Jan. 30, 1956	65.02
Jan. 25, 1950	42.34	July 20	51.54	Feb. 3, 1958	63.56
Sept. 7	43.71	Feb. 24, 1954	52.92		

D-22. Lat. 29°32', long. 95°34'. Diameter 4 inches, depth 448 feet, screened from 426 to 446 feet.

May 1, 1947	40.93	Aug. 5, 1952	67.91	Jan. 23, 1956	79.25
Dec. 30, 1948	53.45	Jan. 19, 1953	70.28	Aug. 10	79.45
Aug. 30, 1949	55.05	July 20	72.09	Jan. 21, 1957	87.48
Jan. 25, 1950	55.33	Jan. 20, 1954	72.80	Aug. 1	82.54
Sept. 7	59.20	Aug. 2	78.72	Feb. 3, 1958	81.01
Aug. 24, 1951	65.65	Feb. 1, 1955	78.60		
Jan. 15, 1952	66.00	Aug. 16	81.78		



WATER-LEVEL MEASUREMENTS IN FORT BEND COUNTY -- CONTINUED

D-23. Lat. 29°36', long. 95°28'.

Date	Water Level	Date	Water Level	Date	Water Level
Sept. 27, 1950	8.32	Dec. 22, 1953	10.11	Feb. 20, 1957	10.21
Dec. 13	12.78	Dec. 17, 1954	5.90	Dec. 11	6.75
Feb. 5, 1952	12.55	Feb. 9, 1955	4.19	Feb. 26, 1958	4.33
Feb. 5, 1953	12.39	Feb. 16, 1956	5.08		

E-2. Lat. 29°31', long. 95°38'. Diameter 6 inches, depth 720 feet, screened from 627 to 674 feet.

Dec. 4, 1944	30.0	Feb. 8, 1951	52.94	Jan. 20, 1954	62.92
Apr. 30, 1947	37.05	Aug. 28	58.08	Aug. 16, 1955	72.69
Dec. 30, 1948	47.76	Jan. 16, 1952	57.56	Jan. 23, 1956	69.7
Sept. 6, 1949	49.35	Aug. 5	59.14	Jan. 23, 1957	75.60
Jan. 27, 1950	49.19	Jan. 21, 1953	60.89	Feb. 3, 1958	73.87
Sept. 6	52.34	July 20	62.95		

E-3. Lat. 29°31', long. 95°38'. Diameter 4 inches, depth 300 feet.

Apr. 30, 1947	27.61	Feb. 8, 1951	36.00	Jan. 20, 1954	42.05
Dec. 30, 1948	24.47	Aug. 28	39.60	Aug. 3	45.70
Sept. 6, 1949	34.63	Jan. 16, 1952	40.20	Feb. 1, 1955	46.45
Jan. 27, 1950	34.58	Aug. 5	40.60	Aug. 16	48.02
Sept. 6	35.75	Jan. 21, 1953	42.12	Jan. 23, 1956	48.76

E-9. Lat. 29°33', long. 95°36'. Diameter 5 inches, depth 484 feet, screened from 453 to 478 feet.

May 1, 1947	33.67	Aug. 24, 1951	58.94	Feb. 1, 1955	68.14
Dec. 30, 1948	47.95	Jan. 15, 1952	57.48	Aug. 16	72.33
Sept. 1, 1949	48.30	Jan. 19, 1953	61.29	Jan. 27, 1956	72.58
Jan. 25, 1950	47.72	July 20	64.06	Aug. 10	75.05
Sept. 7	52.14	Jan. 20, 1954	63.09	Jan. 21, 1957	75.93
Jan. 18, 1951	52.39	Aug. 2	69.02	Aug. 1	74.30

E-10. Lat. 29°33', long. 95°36'. Diameter 5 inches, depth 671 feet.

May 1, 1947	38.30	Jan. 15, 1952	62.28	Aug. 16, 1955	78.51
Dec. 30, 1948	51.32	Aug. 6	65.86	Jan. 27, 1956	75.40
Sept. 1, 1949	53.34	Jan. 19, 1953	66.48	Aug. 10	81.35
Jan. 25, 1950	52.17	July 20	69.63	Jan. 21, 1957	82.13
Sept. 7	57.40	Jan. 20, 1954	68.23	Aug. 1	80.68
Jan. 18, 1951	57.23	Aug. 2	76.36		
Aug. 24	64.22	Feb. 1, 1955	73.83		

WATER-LEVEL MEASUREMENTS IN FORT BEND COUNTY -- CONTINUED

E-11. Lat. 29°33', long. 95°35'. Diameter 6 inches, depth 716 feet, screened from 671 to 715 feet.

Date	Water Level	Date	Water Level	Date	Water Level
May 1, 1947	40.36	Jan. 15, 1952	65.65	Aug. 16, 1955	81.43
Dec. 30, 1948	53.33	Aug. 5	67.96	Jan. 23, 1956	79.07
Aug. 30, 1949	55.28	Jan. 19, 1953	69.89	Jan. 21, 1957	86.56
Jan. 25, 1950	54.50	July 20	72.04	Aug. 1	84.70
Sept. 7	59.50	Jan. 20, 1954	71.86	Feb. 3, 1958	84.79
Jan. 18, 1951	60.68	Aug. 2	78.48		
Aug. 24	66.63	Feb. 1, 1955	77.54		

E-21. Lat. 29°36', long. 95°39'. Diameter 3 inches, depth 257 feet.

Oct. 23, 1931	19.0	Dec. 30, 1948	42.1	Jan. 27, 1950	41.3
May 8, 1947	31.7	Aug. 30, 1949	43.7		

E-22. Lat. 29°36', long. 95°39'. Diameter 8 inches, depth 700 feet.

Apr. 1945	32.0	Aug. 30, 1949	46.1	Feb. 8, 1951	45.4
May 8, 1947	38.2	Jan. 27, 1950	43.6	Aug. 29	54.7
Dec. 30, 1948	46.9	Sept. 7	47.4		

E-26. Lat. 29°36', long. 95°39'. Diameter 10 inches, depth 700 feet. Screened opposite sands between 500 and 700 feet.

Dec. 30, 1948	57.00	Sept. 7, 1950	67.72	Jan. 16, 1952	68.30
Aug. 30, 1949	61.40	Feb. 8, 1951	62.10	Jan. 19, 1953	74.84
Jan. 27, 1950	58.62	Aug. 29	77.33		

F-37. Lat. 29°31', long. 95°51'. Diameter 4 inches, depth 243 feet.

Apr. 28, 1947	36.71	Jan. 15, 1952	43.88	Aug. 17, 1955	46.07
Dec. 29, 1948	40.26	Aug. 6	46.16	Jan. 27, 1956	44.31
Aug. 31, 1949	42.33	Jan. 20, 1953	44.22	Aug. 13	47.01
Jan. 31, 1950	40.37	July 21	42.19	Jan. 22, 1957	46.19
Sept. 8	43.77	Feb. 2, 1954	41.30	Aug. 2	48.73
Jan. 19, 1951	41.62	Aug. 3	41.89		
Aug. 27	45.88	Feb. 2, 1955	43.08		

WATER-LEVEL MEASUREMENTS IN FORT BEND COUNTY -- CONTINUED

F-48. Lat. 29°35', long. 95°53'. Diameter 18 inches, depth 445 feet, casing slotted below 90 feet.

Date	Water Level	Date	Water Level	Date	Water Level
Apr. 24, 1947	42.93	Jan. 18, 1951	49.18	Jan. 21, 1957	54.88
Dec. 29, 1948	49.06	Jan. 15, 1952	50.34	Aug. 1	50.33
Jan. 31, 1950	47.70	Jan. 20, 1953	50.26	Feb. 3, 1958	49.26

F-50. Lat. 29°36', long. 95°54'. Diameter 18 inches, depth 438 feet, casing slotted below 91 feet.

Apr. 24, 1947	43.66	Aug. 29, 1951	52.86	Aug. 17, 1955	53.84
Mar. 4, 1948	46.99	Jan. 15, 1952	52.09	Jan. 27, 1956	53.65
Dec. 29	50.19	Jan. 20, 1953	52.16	Aug. 10	55.70
Aug. 31, 1949	51.13	July 20	53.59	Jan. 21, 1957	55.81
Jan. 31, 1950	49.53	Feb. 2, 1954	51.67	Aug. 1	50.68
Sept. 5	51.62	Aug. 2	54.26	Feb. 3, 1958	50.39
Jan. 18, 1951	50.59	Feb. 2, 1955	53.53		

G-25. Lat. 29°33', long. 95°56'. Diameter 6 inches, depth 173 feet.

May 21, 1947	32.23	Jan. 15, 1952	34.11	Feb. 2, 1955	35.86
Aug. 31, 1949	33.35	Aug. 6	35.25	Aug. 17	36.19
Jan. 31, 1950	32.45	Jan. 20, 1953	33.71	Jan. 23, 1956	35.53
Sept. 5	33.85	July 20	36.48	Aug. 10	36.93
Jan. 18, 1951	33.27	Feb. 2, 1954	35.03	Feb. 3, 1958	33.40
Aug. 29	35.10	Aug. 2	36.52		

H-15. Lat. 29°26', long. 95°55'.

Dec. 29, 1948	24.25	Sept. 8, 1950	27.81	Jan. 15, 1952	27.15
Jan. 31, 1950	24.50	Jan. 19, 1951	25.92	Jan. 27, 1956	31.09

H-16. Lat. 29°25', long. 95°56'. Diameter 18 inches, depth 397 feet, casing slotted below 112 feet.

Apr. 14, 1947	22.26	Sept. 8, 1950	30.89	Feb. 2, 1955	32.19
Mar. 4, 1948	23.52	Jan. 19, 1951	26.77	Jan. 27, 1956	33.18
Dec. 29	25.75	Jan. 15, 1952	29.40	Jan. 22, 1957	35.07
Aug. 31, 1949	31.15	Aug. 6	36.11		
Jan. 31, 1950	26.21	Feb. 2, 1954	30.33		



WATER-LEVEL MEASUREMENTS IN FORT BEND COUNTY -- CONTINUED

H-17. Lat. 29°25', long. 95°56'.

Date	Water Level	Date	Water Level	Date	Water Level
Mar. 4, 1948	23.75	Jan. 31, 1950	26.78	Jan. 15, 1952	29.64
Dec. 29	26.18				

H-18. Lat. 29°25', long. 95°56'. Diameter 14 inches, depth 240 feet.

Mar. 4, 1948	23.50	Jan. 15, 1952	28.76	Jan. 27, 1956	31.38
Dec. 29	25.33	Jan. 20, 1953	29.66	Jan. 22, 1957	32.90
Jan. 31, 1950	25.86	Feb. 2, 1954	29.71	Jan. 27, 1958	33.45
Jan. 19, 1951	28.14	Feb. 2, 1955	31.40		

H-20. Lat. 29°25', long. 95°56'. Depth 564 feet.

Jan. 20, 1953	31.19	Feb. 2, 1955	33.42	Jan. 22, 1957	35.84
Feb. 2, 1954	31.39	Jan. 27, 1956	34.06		

I-15. Lat. 29°28', long. 95°45'. Diameter 6 inches, depth 86 feet.

Apr. 30, 1947	9.24	Jan. 16, 1952	14.57	Aug. 16, 1955	22.29
Dec. 29, 1948	12.45	Aug. 6	16.85	Jan. 27, 1956	20.90
Sept. 2, 1949	13.35	Jan. 21, 1953	17.44	Aug. 13	19.92
Jan. 30, 1950	13.10	July 21	18.86	Jan. 22, 1957	19.86
Sept. 8	13.59	Jan. 20, 1954	18.09	Aug. 2	19.53
Feb. 7, 1951	13.30	Aug. 3	19.71	Jan. 28, 1958	20.86
Aug. 29	13.22	Feb. 1, 1955	19.73		

I-16. Lat. 29°28', long. 95°45'. Diameter 6 inches, depth 180 feet.

Apr. 30, 1947	13.95	Aug. 6, 1952	18.23	Jan. 27, 1956	21.13
Dec. 29, 1948	16.80	Jan. 21, 1953	18.80	Aug. 13	21.62
Sept. 2, 1949	16.78	July 21	19.03	Jan. 22, 1957	22.10
Jan. 30, 1950	15.51	Jan. 20, 1954	18.84	Aug. 2	22.46
Sept. 8	15.60	Aug. 3	19.60	Jan. 28, 1958	22.91
Aug. 28, 1951	17.73	Feb. 2, 1955	20.22		
Jan. 16, 1952	18.06	Aug. 16	20.69		

WATER-LEVEL MEASUREMENTS IN FORT BEND COUNTY -- CONTINUED

I-22. Lat. 29°25', long. 95°45'. Diameter 18 inches, depth 636 feet, casing slotted below 85 feet.

Date	Water Level	Date	Water Level	Date	Water Level
Apr. 24, 1947	11.67	Aug. 28, 1951	42.03	Jan. 27, 1956	37.96
Mar. 4, 1948	19.71	Jan. 16, 1952	29.48	Jan. 22, 1947	41.31
Dec. 29	24.12	Jan. 21, 1953	30.57	Jan. 28, 1958	37.59
Jan. 30, 1950	24.75	Feb. 2, 1954	32.21		
Feb. 7, 1951	26.81	Feb. 2, 1955	36.24		

I-24. Lat. 29°21', long. 95°45'. Diameter 20 inches, depth 545 feet, casing slotted below 65 feet.

Mar. 4, 1948	21.14	Feb. 7, 1951	25.33	Jan. 27, 1956	33.90
Dec. 29	24.44	Jan. 16, 1952	27.84	Jan. 22, 1957	28.35
Sept. 2, 1949	43.53	Jan. 21, 1953	28.47	Jan. 28, 1958	26.77
Jan. 30, 1950	23.86	Feb. 2, 1954	29.17		
Sept. 8	a 82.53	Feb. 2, 1955	31.70		

I-25. Lat. 29°21', long. 95°45'. Diameter 20 inches, depth 556 feet, casing slotted below 64 feet.

Mar. 4, 1948	21.19	Feb. 7, 1951	24.53	Feb. 2, 1955	28.85
Dec. 29	25.07	Aug. 28	c 60.01	Jan. 27, 1956	29.52
Sept. 2, 1949	c 43.72	Jan. 16, 1952	25.94	Jan. 22, 1957	29.32
Jan. 30, 1950	23.16	Jan. 21, 1953	26.28	Jan. 28, 1958	27.34
Sept. 8	c 46.34	Feb. 2, 1954	26.78		

I-35. Lat. 29°21', long. 95°50'. Diameter 4 inches, depth approximately 400 feet.

May 20, 1947	20.6	Sept. 2, 1949	31.9	Feb. 7, 1951	31.7
Dec. 29, 1948	29.2				

J-5. Lat. 29°29', long. 95°38'. Diameter 4 inches, depth 302 feet, screened from 266 to 300 feet.

Apr. 30, 1947	12.1	Dec. 30, 1948	18.1	Sept. 6, 1949	18.2
---------------	------	---------------	------	---------------	------

WATER-LEVEL MEASUREMENTS IN FORT BEND COUNTY -- CONTINUED

J-9. Lat. 29°28'. Long. 95°35'. Diameter 4 inches, depth 307 feet.

Date	Water Level	Date	Water Level	Date	Water Level
Apr. 29, 1947	12.55	Jan. 16, 1952	23.57	Aug. 16, 1955	31.96
Dec. 30, 1948	18.62	Aug. 5	23.77	Jan. 23, 1956	32.83
Sept. 6, 1949	18.42	Jan. 21, 1953	25.12	Aug. 13	34.72
Jan. 27, 1950	18.54	July 20	26.25	Jan. 23, 1957	36.39
Sept. 6	19.26	Feb. 2, 1954	26.82	Aug. 2	32.98
Feb. 8, 1951	20.75	Aug. 3	28.94	Jan. 27, 1958	34.96
Aug. 28	22.31	Feb. 1, 1955	30.56		

K-2. Lat. 29°28', long. 95°34'. Diameter 6 inches, depth 600 feet.

Apr. 29, 1947	20.51	Feb. 8, 1951	34.86	Jan. 23, 1956	53.12
Dec. 30, 1948	29.05	Aug. 28	37.65	Jan. 23, 1957	59.15
Sept. 6, 1949	30.26	Jan. 21, 1953	42.22	Aug. 2	57.98
Jan. 27, 1950	31.28	Jan. 20, 1954	45.27	Jan. 27, 1958	58.38
Sept. 6	33.10	Feb. 1, 1955	51.00		

K-3. Lat. 29°28', long. 95°34'. Diameter 5 inches, depth 150 feet.

Apr. 29, 1947	16.20	Aug. 28, 1951	26.50	Feb. 1, 1955	35.50
Dec. 30, 1948	21.36	Jan. 16, 1952	27.73	Aug. 16	36.87
Sept. 6, 1949	21.97	Aug. 3	28.17	Jan. 23, 1956	38.20
Jan. 27, 1950	21.87	Jan. 21, 1953	29.69	Aug. 13	41.51
Sept. 6	22.86	Jan. 20, 1954	31.54	Jan. 23, 1957	42.69
Feb. 8, 1951	24.73	Aug. 3	33.70	Aug. 2	39.62

K-8. Lat. 29°29', long. 95°33'. Diameter 4 inches, depth approximately 420 feet.

May 6, 1947	20.93	Aug. 28, 1951	32.41	Aug. 1, 1957	46.51
Aug. 30, 1949	25.53	Jan. 20, 1954	37.72	Feb. 3, 1958	46.94
Jan. 25, 1950	25.79	Aug. 13, 1956	49.80		
Jan. 16, 1951	30.56	Jan. 21, 1957	49.03		

K-9. Lat. 29°29', long. 95°30'.

Sept. 7, 1950	27.09	Jan. 19, 1953	35.86		
---------------	-------	---------------	-------	--	--



WATER-LEVEL MEASUREMENTS IN FORT BEND COUNTY -- CONTINUED

K-14. Lat. 29°29', long. 95°34'. Diameter 4 inches, depth 375 feet.

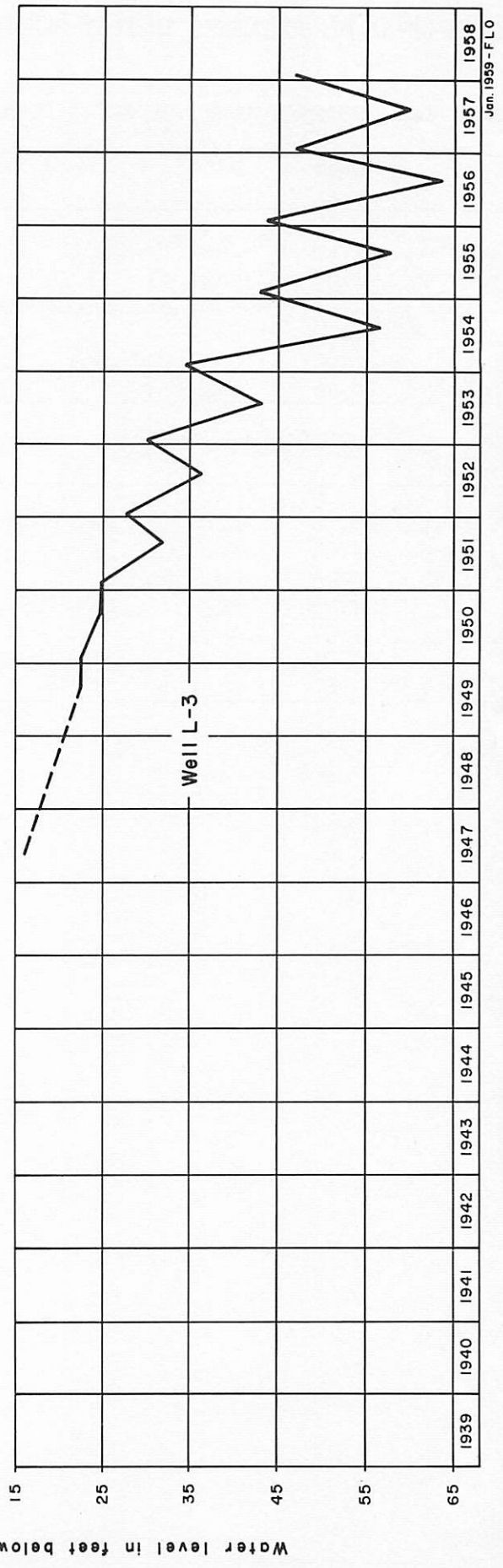
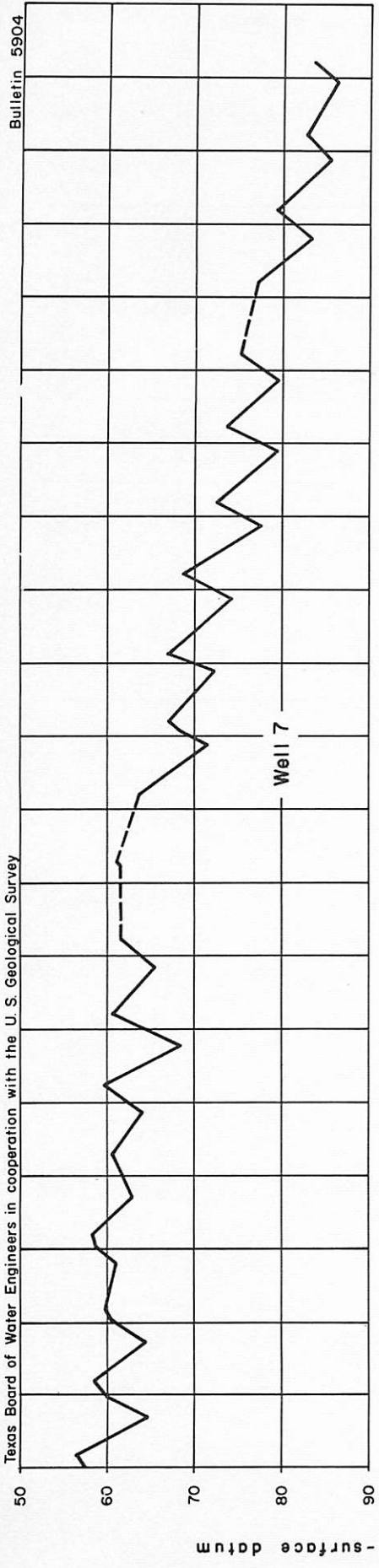
Date	Water Level	Date	Water Level	Date	Water Level
Dec. 30, 1948	21.29	Jan. 16, 1952	27.69	Feb. 1, 1955	35.11
Sept. 6, 1949	21.88	Aug. 5	28.09	Aug. 16	36.43
Jan. 27, 1950	21.95	Jan. 21, 1953	29.70	Jan. 23, 1956	37.75
Sept. 6	22.13	July 20	30.33	Aug. 13	41.38
Feb. 8, 1951	24.60	Jan. 20, 1954	31.25	Jan. 23, 1957	42.16
Aug. 28	26.44	Aug. 3	33.31	Aug. 2	39.30

L -3. Lat. 29°18', long. 95°39'. Diameter 6 inches, depth 200 feet.

May 21, 1947	16.06	Aug. 6, 1952	36.26	Jan. 23, 1956	43.76
Sept. 2, 1949	22.64	Jan. 21, 1953	30.19	Aug. 13	63.40
Jan. 30, 1950	22.45	July 21	43.10	Jan. 22, 1957	46.99
Sept. 6	24.75	Feb. 2, 1954	34.45	Aug. 2	59.89
Feb. 7, 1951	24.97	Aug. 3	56.48	Jan. 27, 1958	47.04
Aug. 28	31.95	Feb. 2, 1955	42.84		
Jan. 16, 1952	27.80	Aug. 17	57.74		

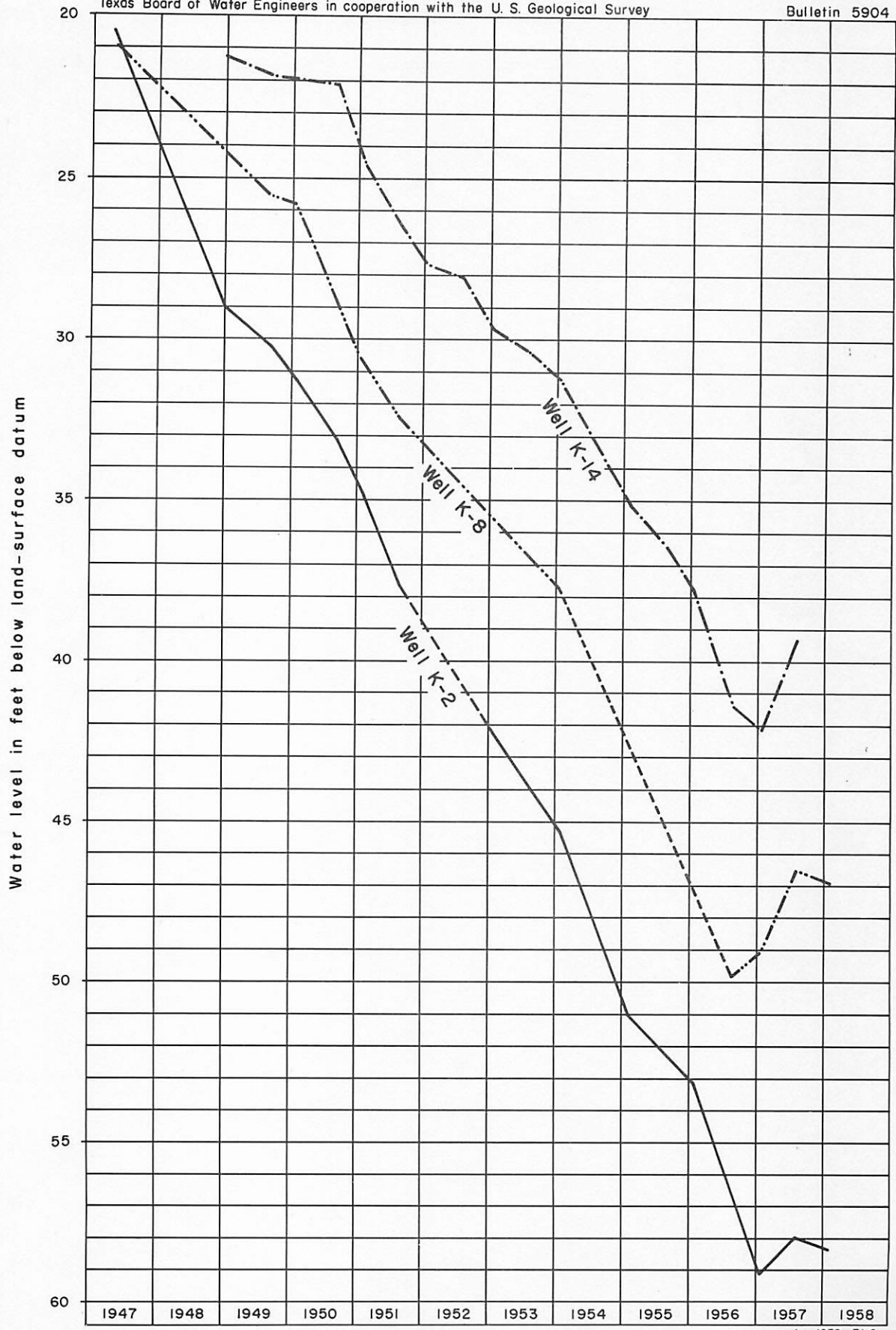
a Pumping

c Nearby well pumping



FLUCTUATION OF WATER LEVELS IN WELL 7 AND WELL L-3, FORT BEND COUNTY, TEXAS

Jan. 1959 - F.L.O.

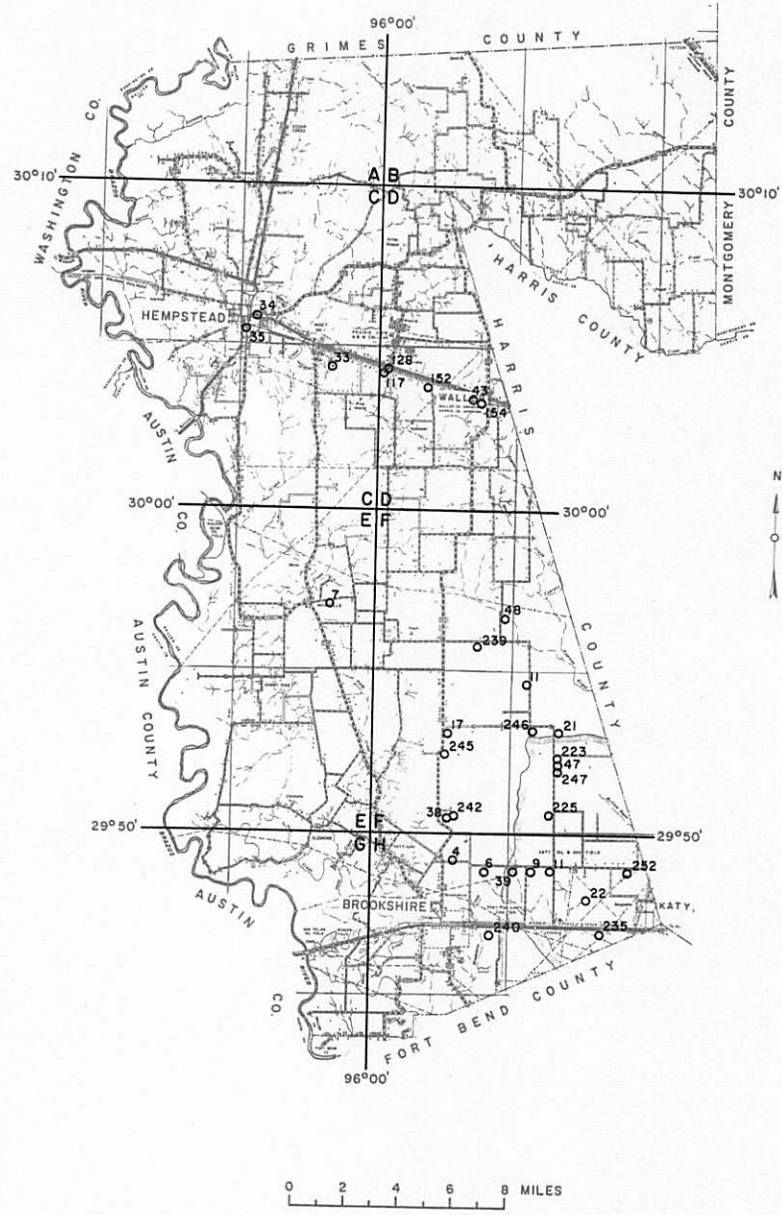


FLUCTUATION OF WATER LEVELS IN WELL K-14, WELL K-8, AND WELL K-2, FORT BEND COUNTY, TEXAS

Jan. 1959 - FLO



WALLER COUNTY



BASE MAP FROM TEXAS STATE HIGHWAY DEPARTMENT

FLO

### OBSERVATION WELLS IN WALLER COUNTY, TEXAS DECEMBER 1958.

WATER-LEVEL MEASUREMENTS IN WALLER COUNTY, TEXAS

117. Lat. 30°04', long. 95°59'. Diameter 2 inches, depth 19 feet.

Date	Water level	Date	Water level	Date	Water level
May 11, 1931	3.80	Feb. 26, 1936	3.12	Mar. 26, 1941	2.19
13	3.92	Feb. 2, 1938	13.45	May 13	6.77
22	3.67	May 10	4.28	27	17.60
28	4.43	Mar. 23, 1939	16.85	June 10	14.75
June 5	5.00	Feb. 20, 1940	17.67	20	10.00
19	5.5	June 11	18.04	July 7	11.53
Jan. 27, 1932	16.45	12	16.03	30	14.73
Feb. 3	16.64	13	16.55	Nov. 6	12.74
10	16.48	15	16.96	Dec. 17	6.33
16	16.43	21	17.70	Jan. 23, 1942	7.98
23	13.06	July 1	15.59	May 5	11.22
Mar. 1	15.31	16	15.40	Jan. 21, 1943	5.71
8	13.90	Nov. 28	12.33	Jan. 31, 1944	1.93
15	15.97	Jan. 9, 1941	7.43	May 31	2.43
22	18.54	17	1.73	Dec. 14	5.70
29	18.95	24	5.45	Jan. 25, 1945	2.02
Apr. 5	19.21	29	6.25	Mar. 15	2.03
Mar. 13, 1933	11.68	Feb. 12	3.66	Jan. 17, 1946	1.26
Apr. 25, 1934	17.86	21	2.81		
May 30, 1935	12.72	26	2.21		

128. Lat. 30°04', long. 95°59'. Diameter 6 inches, depth approximately 100 feet.

Apr. 25, 1940	43.39	July 1, 1940	43.70	July 30, 1941	41.49
30	43.40	16	43.30	Sept. 4	41.23
May 7	43.40	Aug. 19	43.74	Dec. 17	39.98
9	43.55	Oct. 7	43.83	Jan. 23, 1942	39.99
10	43.52	Nov. 28	44.03	May 5	39.92
11	43.50	Jan. 9, 1941	43.97	July 28	39.78
13	44.17	17	43.55	Jan. 21, 1943	40.09
21	43.51	24	43.53	Apr. 28	42.89
27	43.57	29	43.53	June 18	40.20
29	44.15	Feb. 12	42.90	Aug. 25	40.26
30	44.60	21	43.27	Jan. 31, 1944	40.25
June 6	43.65	26	43.06	May 31	39.40
11	43.64	Mar. 26	42.65	Sept. 14	39.25
12	43.55	May 13	42.23	Dec. 14	40.03
13	43.60	27	41.95	Jan. 25, 1945	39.31
15	43.52	June 10	41.73	Mar. 15	38.87
21	43.65	20	41.71		
26	43.67	July 7	41.47		



WATER-LEVEL MEASUREMENTS IN WALLER COUNTY--CONTINUED

152. Lat. 30°03', long. 95°58'. Diameter 2 inches, depth 20 feet.

Date	Water level	Date	Water level	Date	Water level
May 22, 1931	3.34	May 30, 1935	3.30	Feb. 21, 1941	1.70
28	4.25	Feb. 25, 1936	2.20	26	1.61
June 19	5.59	May 14	3.77	Mar. 26	1.75
July 14	6.90	Feb. 2, 1938	2.78	May 13	2.98
Aug. 13	8.10	May 10	2.35	27	4.49
Jan. 13, 1932	1.78	Mar. 23, 1939	3.61	June 10	4.50
20	1.93	May 30	9.24	20	2.25
27	1.47	Aug. 2	8.64	July 7	3.64
Feb. 3	2.00	Feb. 20, 1940	2.90	30	3.83
10	2.71	Apr. 3	6.85	Sept. 4	7.69
16	2.23	30	5.42	Nov. 6	2.36
23	1.20	May 7	4.70	Dec. 17	2.26
Mar. 1	2.62	9	5.02	Feb. 27, 1942	2.33
8	2.26	10	5.20	May 5	3.02
15	2.95	11	5.70	July 28	4.88
22	3.60	13	6.37	Sept. 17	8.68
29	4.45	21	7.66	Jan. 21, 1943	2.42
Apr. 5	4.91	27	8.02	Apr. 28	4.68
12	7.56	29	8.00	June 18	4.49
19	16.58	30	4.27	Aug. 25	6.69
26	19.75	June 1	3.80	Jan. 31, 1944	1.45
May 4	19.90	3	4.23	May 31	2.95
10	19.92	6	4.50	Sept. 14	8.25
17	19.95	10	1.18	Jan. 25, 1945	2.18
24	19.95	11	2.78	Mar. 15	2.60
June 1	19.98	12	2.11	Jan. 17, 1946	1.52
8	19.95	13	2.48	May 21	2.09
15	19.97	15	2.69	July 9	3.11
29	19.90	21	3.30	Dec. 18	2.09
July 7	19.90	26	3.85	Jan. 30, 1947	1.94
14	19.93	July 1	1.46	Mar. 13	2.10
22	19.90	16	2.78	June 6	3.58
28	19.95	Oct. 7	11.20	Feb. 16, 1948	2.26
Aug. 4	19.98	Nov. 28	3.00	Dec. 16, 1949	2.93
11	19.95	Jan. 9, 1941	1.85	Feb. 27, 1950	2.46
18	19.98	17	1.81	June 16	3.62
Mar. 13, 1933	2.52	24	2.31	June 18, 1952	3.62
May 10	18.70	29	2.50	Dec. 17, 1953	4.44
Apr. 25, 1934	3.75	Feb. 12	2.18	Feb. 25, 1954	3.57

WATER-LEVEL MEASUREMENTS IN WALLER COUNTY--CONTINUED

154. Lat. 30°03', long. 95°56'. Diameter 6 inches, depth 58 feet.

Date	Water level	Date	Water level	Date	Water level
May 28, 1931	12.03	Jan. 25, 1939	13.69	July 28, 1942	13.15
June 19	12.59	Mar. 23	12.98	Sept. 17	11.97
July 14	13.30	May 30	13.61	Jan. 21, 1943	10.85
Sept. 24	14.80	Aug. 2	13.75	Apr. 28	11.05
Nov. 7	14.80	Sept. 25	14.87	June 18	10.90
Dec. 11	14.60	Dec. 16	15.12	Aug. 25	11.84
Feb. 10, 1932	14.72	Feb. 20, 1940	14.08	Jan. 31, 1944	9.83
Apr. 19	12.42	Apr. 30	13.93	May 31	9.40
June 22	13.74	June 29	13.56	Sept. 14	18.80
Sept. 29	15.26	Aug. 19	13.95	Jan. 25, 1945	13.39
Nov. 28	15.34	Oct. 7	14.88	Mar. 15	10.91
Dec. 28	15.20	Nov. 28	13.00	June 26	11.11
Jan. 31, 1933	14.66	Jan. 28, 1941	11.69	Jan. 17, 1946	9.85
Nov. 28, 1934	15.84	Mar. 1	11.09	May 21	10.67
May 30, 1935	12.52	Apr. 4	10.88	July 9	10.29
Feb. 25, 1936	12.45	May 22	10.97	Sept. 18	13.65
May 13	12.23	July 7	10.30	Dec. 18	8.54
Nov. 9, 1937	14.87	Sept. 4	11.50	Jan. 30, 1947	7.49
Feb. 2, 1938	14.04	Nov. 6	10.68	June 6	8.67
May 10	11.93	Jan. 23, 1942	10.35	Sept. 16	12.08
Nov. 22	13.83	May 5	9.73		

223. Lat. 29°52', long. 95°53'. Diameter 16 to 8 inches, depth 767 feet, screens opposite sands below 117 feet.

Feb. 10, 1931	48.17	Oct. 21, 1942	60.29	Nov. 21, 1950	72.72
Apr. 28	47.53	Mar. 13, 1943	57.29	Mar. 30, 1951	69.98
Mar. 17, 1933	49.76	Nov. 9	62.62	Nov. 14	74.35
Mar. 15, 1939	54.01	Mar. 29, 1944	59.40	Nov. 25, 1952	76.20
Sept. 15	61.36	Oct. 6	67.15	Mar. 31, 1953	73.83
Dec. 21	57.11	Mar. 17, 1945	61.40	Nov. 19	77.29
Mar. 12, 1940	56.06	Nov. 6	65.18	Mar. 17, 1954	75.50
Apr. 27	55.84	Mar. 26, 1946	62.16	Dec. 3	78.67
Oct. 7	62.58	Mar. 24, 1947	62.03	Mar. 15, 1955	77.00
Jan. 22, 1941	58.39	Mar. 18, 1948	63.12	May 18	79.07
Mar. 15	57.62	Nov. 15	69.69	Mar. 15, 1956	77.56
May 21	60.20	Jan. 25, 1949	68.08	Nov. 19	81.17
Oct. 28	59.86	Mar. 8	66.45	Mar. 13, 1957	79.75
Jan. 15, 1942	57.87	Nov. 28	70.14	Dec. 2	81.88
Mar. 18	57.05	Mar. 14, 1950	68.70	Mar. 20, 1958	44.19

WATER-LEVEL MEASUREMENTS IN WALLER COUNTY--CONTINUED

225. Lat. 29°50', long. 95°53'. Diameter 24 to 12 inches, depth 643 feet, screens opposite sands below 155 feet.

Date	Water level	Date	Water level	Date	Water level
Oct. 7, 1940	76.91	Nov. 6, 1945	78.34	Mar. 14, 1952	78.59
Jan. 22, 1941	61.69	Mar. 27, 1946	68.11	Nov. 25, 1952	93.08
Oct. 28, 1941	65.29	Mar. 24, 1947	64.81	Mar. 31, 1953	80.60
Jan. 20, 1942	59.41	Mar. 17, 1948	68.09	Nov. 19, 1954	85.96
Mar. 18, 1942	57.88	Nov. 15, 1948	89.36	Mar. 17, 1954	79.55
Oct. 21, 1942	65.95	Mar. 8, 1949	72.39	Dec. 3, 1954	88.69
Apr. 13, 1943	58.69	Nov. 28, 1949	80.15	Mar. 15, 1955	84.18
Nov. 9, 1943	72.03	Mar. 14, 1950	74.82	Mar. 15, 1956	82.66
Mar. 29, 1944	61.85	Nov. 21, 1950	91.18	Nov. 19, 1956	89.01
Oct. 6, 1944	98.35	Mar. 30, 1951	77.22	Mar. 13, 1957	85.73
Mar. 17, 1945	67.29	Nov. 14, 1951	89.39		

235. Lat. 29°45', long. 95°51'. Diameter 24 inches, depth 545 feet.

Mar. 12, 1931	48.55	Nov. 9, 1943	62.14	Mar. 21, 1951	69.86
Mar. 18, 1933	50.81	Mar. 29, 1944	60.38	Nov. 16, 1951	73.48
Mar. 15, 1939	55.02	Oct. 4, 1944	63.70	Mar. 13, 1952	72.37
Sept. 18, 1939	59.35	Mar. 16, 1945	60.95	Nov. 25, 1952	74.90
Dec. 21, 1939	60.45	Nov. 1, 1945	63.82	Mar. 31, 1953	73.95
Mar. 12, 1940	58.50	Mar. 28, 1946	62.00	Nov. 27, 1953	74.60
Jan. 23, 1941	60.32	Mar. 28, 1947	62.62	Dec. 3, 1954	77.79
Mar. 15, 1941	60.06	Mar. 19, 1948	63.92	Mar. 14, 1955	77.84
May 16, 1941	59.52	Nov. 10, 1948	68.40	Nov. 15, 1955	79.10
Oct. 28, 1941	60.88	Jan. 25, 1949	67.37	Mar. 9, 1956	79.02
Jan. 15, 1942	59.74	Mar. 8, 1949	66.80	Nov. 21, 1956	81.35
Mar. 17, 1942	58.88	Dec. 1, 1949	69.07	Mar. 15, 1957	80.97
Sept. 22, 1942	58.78	Mar. 13, 1950	68.40	Nov. 27, 1957	81.97
Apr. 13, 1943	58.77	Nov. 22, 1950	64.69	Mar. 18, 1958	82.19

239. Lat. 29°55', long. 95°56'. Diameter 30 to 12 inches, depth 828 feet.

Mar. 15, 1941	54.98	Mar. 18, 1948	58.20	Nov. 24, 1953	85.14
May 16, 1941	53.92	Nov. 18, 1948	84.30	Mar. 16, 1954	67.83
Nov. 27, 1941	60.16	Jan. 25, 1949	68.37	Dec. 6, 1954	82.31
Jan. 20, 1942	54.33	Mar. 8, 1949	63.97	Mar. 15, 1955	70.46
Mar. 18, 1942	53.00	Nov. 28, 1949	74.62	Nov. 17, 1955	85.45
Apr. 13, 1943	52.05	Mar. 15, 1950	62.94	Mar. 14, 1956	70.05
Nov. 9, 1943	65.90	Nov. 20, 1950	79.74	Nov. 20, 1956	97.81
Mar. 29, 1944	55.10	Apr. 2, 1951	63.69	Mar. 15, 1957	75.12
Oct. 6, 1944	84.55	Nov. 14, 1951	82.59	Nov. 29, 1957	85.93
Mar. 16, 1945	60.40	Mar. 13, 1952	66.15	Mar. 20, 1958	72.79
Mar. 28, 1946	58.50	Nov. 26, 1952	87.35		
Mar. 28, 1947	54.01	Mar. 31, 1953	71.26		



WATER-LEVEL MEASUREMENTS IN WALLER COUNTY--CONTINUED

240. Lat. 29°46', long. 95°55'. Diameter 20 to 14 inches, depth 290 feet, casing slotted opposite sands below 80 feet.

Date	Water level	Date	Water level	Date	Water level
Oct. 2, 1940	60.90	Nov. 5, 1945	61.30	Mar. 31, 1953	67.83
Jan. 23, 1941	59.51	Mar. 21, 1946	60.20	Nov. 21	70.09
Oct. 27	59.36	Mar. 19, 1948	60.53	Mar. 16, 1954	69.43
Jan. 20, 1942	58.86	Nov. 15	64.10	Dec. 6	71.98
Mar. 17	58.64	Mar. 8, 1949	62.09	Mar. 16, 1955	71.30
Sept. 23	59.59	Nov. 28	63.63	Nov. 17	73.99
Apr. 13, 1943	58.08	Mar. 13, 1950	63.79	Mar. 9, 1956	72.91
Nov. 9	59.76	Mar. 21, 1951	64.40	Nov. 21	76.83
Mar. 29, 1944	59.29	Nov. 14	66.39	Mar. 15, 1957	75.45
Oct. 6	61.45	Mar. 13, 1952	65.89	Nov. 27	77.54
Mar. 16, 1945	59.80	Nov. 21	68.77	Mar. 18, 1958	76.60

242. Lat. 29°50', long. 95°57'. Diameter 18 to 8 inches, depth 555 feet, casing slotted opposite sands below 60 feet.

Oct. 27, 1941	63.15	Mar. 18, 1948	61.78	Mar. 31, 1953	68.71
Jan. 20, 1942	60.25	Nov. 15	64.03	Mar. 16, 1954	70.48
Mar. 18	58.76	Mar. 8, 1949	63.09	Dec. 6	72.72
Apr. 13, 1943	59.46	Nov. 28	68.00	Mar. 15, 1955	71.58
Mar. 29, 1944	60.72	Mar. 14, 1950	66.23	Mar. 14, 1956	73.99
Oct. 6	77.54	Nov. 21	65.78	Nov. 20	80.21
Mar. 16, 1945	62.70	Apr. 2, 1951	65.23	Mar. 15, 1957	76.34
Nov. 5	64.45	Nov. 14	67.34	Mar. 20, 1958	76.73
Mar. 28, 1946	61.58	Mar. 13, 1952	67.14		
Mar. 24, 1947	61.23	Nov. 26	69.67		

245. Lat. 29°52', long. 95°57'. Diameter 20 to 12 inches, depth 482 feet, casing slotted opposite sands below 51 feet.

Jan. 22, 1941	59.5	Mar. 28, 1947	57.38	Nov. 24, 1953	74.42
Oct. 27	63.21	Mar. 18, 1948	59.35	Mar. 16, 1954	64.48
Jan. 20, 1942	57.5	Nov. 15	65.98	Dec. 6	73.70
Mar. 18	56.75	Mar. 8, 1949	67.40	Mar. 15, 1955	67.92
Sept. 23	70.35	Nov. 28	69.11	Nov. 17	74.91
Apr. 13, 1943	56.40	Mar. 14, 1950	63.96	Mar. 14, 1956	73.99
Nov. 9	68.15	Nov. 21	77.18	Nov. 20	80.94
Mar. 29, 1944	58.30	Apr. 2, 1951	65.49	Mar. 15, 1957	68.68
Oct. 6	95.55	Nov. 14	79.00	Nov. 29	70.48
Mar. 16, 1945	61.40	Mar. 13, 1952	67.98	Mar. 20, 1958	70.77
Nov. 5	69.77	Nov. 26	75.60		
Mar. 28, 1946	59.98	Mar. 31, 1953	64.42		

WATER-LEVEL MEASUREMENTS IN WALLER COUNTY--CONTINUED

246. Lat. 29°53', long. 95°54'. Diameter 18 to 8 inches, depth 926 feet, casing slotted opposite sands below 145 feet.

Date	Water level	Date	Water level	Date	Water level
Oct. 7, 1940	57.41	Mar. 17, 1945	55.18	Nov. 25, 1952	74.81
Jan. 22, 1941	52.63	Nov. 6	60.87	Mar. 31, 1953	68.41
Mar. 15	51.90	Mar. 26, 1946	55.61	Nov. 19	72.90
May 21	51.67	Mar. 18, 1948	56.98	Mar. 17, 1954	69.45
Oct. 28	54.48	Nov. 16	69.13	Dec. 2	75.14
Jan. 20, 1942	52.03	Mar. 8, 1949	60.93	Mar. 15, 1955	71.31
Mar. 18	51.37	Nov. 28	65.90	Nov. 18	76.59
Oct. 21	55.42	Mar. 14, 1950	61.84	Mar. 15, 1956	72.49
Apr. 13, 1943	51.78	Nov. 21	68.49	Nov. 19	81.15
Nov. 9	59.03	Mar. 30, 1951	63.68	Mar. 13, 1957	74.33
Mar. 29, 1944	53.70	Nov. 15	71.45	Dec. 2	78.82
Oct. 6	66.45	Mar. 14, 1952	66.07	Mar. 20, 1958	75.38

247. Lat. 29°51', long. 95°53'. Diameter 18 to 8 inches, 641 feet, casing slotted opposite sands below 75 feet.

Mar. 15, 1939	55.57	Oct. 6, 1944	71.90	Mar. 14, 1952	73.62
Sept. 15	68.00	Mar. 17, 1945	62.73	Nov. 25	80.5
Dec. 21	58.90	Nov. 6	66.20	Mar. 31, 1953	76.06
Mar. 12, 1940	57.59	Mar. 26, 1946	62.71	Nov. 19	79.93
Apr. 27	57.47	Mar. 24, 1947	63.30	Mar. 17, 1954	77.58
Oct. 7	66.71	Mar. 18, 1948	65.04	Dec. 3	81.59
Mar. 15, 1941	59.01	Nov. 15	74.66	Mar. 15, 1955	79.02
Oct. 28	62.00	Mar. 8, 1949	67.87	Mar. 15, 1956	79.92
Jan. 20	59.12	Nov. 28	72.23	Nov. 19	84.01
Mar. 18	58.35	Mar. 14, 1950	72.20	Mar. 13, 1957	82.48
Oct. 21	62.45	Nov. 21	76.10	Mar. 20, 1958	83.40
Nov. 9, 1943	64.91	Mar. 30, 1951	73.83		
Mar. 29, 1944	60.44	Nov. 14	78.30		

252. Lat. 29°48', long. 95°50'. Diameter 24 to 13 inches, depth 246 feet, casing slotted opposite sands below 90 feet.

Oct. 4, 1940	63.41	Mar. 29, 1944	61.39	Mar. 7	68.42
Jan. 22, 1941	61.37	Oct. 6	66.15	Nov. 29	70.47
Mar. 15	60.45	Mar. 17, 1945	63.07	Mar. 14, 1950	69.71
May 22	59.87	Nov. 5, 1945	66.46	Nov. 16	72.54
Jan. 15, 1942	60.19	Mar. 26, 1946	64.11	Mar. 29, 1951	71.52
Mar. 17	58.93	Mar. 24, 1947	64.16	Mar. 12, 1952	75.05
Sept. 24	62.58	Mar. 17, 1948	65.80	Nov. 20	79.33
Apr. 13, 1943	59.02	Nov. 10	69.57	Apr. 2, 1953	76.61
Nov. 9	63.84	Jan. 20, 1949	68.79	Nov. 19	78.99

Continued

WATER-LEVEL MEASUREMENTS IN WALLER COUNTY--CONTINUED

252. Continued

Date	Water level	Date	Water level	Date	Water level
Mar. 17, 1954	81.69	Mar. 15, 1956	79.92	Nov. 26	85.89
Nov. 30	84.92	Nov. 21	85.97	Mar. 18, 1958	85.34
Nov. 21, 1955	83.72	Mar. 13, 1957	84.17		

C-33. Lat. 30°04', long. 96°01'. Diameter 12 inches, depth 38 feet.

Nov. 14, 1931	23.74	Mar. 8, 1932	20.10	July 22, 1932	23.83
20	23.80	22	22.68	Aug. 4	23.18
27	23.81	29	22.91	11	23.30
Dec. 4	23.80	Apr. 5	23.03	18	23.25
11	23.84	19	22.88	25	23.32
16	23.82	26	23.12	Sept. 8	23.64
23	23.78	May 4	23.03	15	23.30
30	23.76	10	23.21	22	23.43
Jan. 6, 1932	23.72	17	23.36	29	23.51
13	23.97	24	23.15	Oct. 6	23.38
20	23.92	June 1	23.26	Dec. 28	23.93
27	23.78	8	23.02	Jan. 31, 1933	23.67
Feb. 3	23.60	15	23.16	Mar. 13	23.47
10	23.52	22	23.35	May 10	24.02
16	23.56	29	23.09	June 26	24.76
23	23.02	July 7	23.13		
Mar. 1	22.60	14	23.20		

C-34. Lat. 30°05', long. 96°04'. Diameter 4 inches, depth 85 feet.

Apr. 14, 1931	53.64	Sept. 24, 1931	53.55	Aug. 25, 1932	53.32
May 28	53.43	Nov. 7	53.87	Oct. 28	53.50
June 19	53.35	Jan. 13, 1932	53.98	May 14, 1936	53.34
July 14	53.32	Mar. 15	53.50		

C-35. Lat. 30°05', long. 96°04'. Diameter 8 inches, depth approximately 1,100 feet.

Apr. 14, 1931	5.11	June 19, 1931	5.92	Sept. 24, 1931	5.68
May 28	5.55	July 14	6.02	Feb. 2, 1938	3.80



WATER-LEVEL MEASUREMENTS IN WALLER COUNTY--CONTINUED

D-43. Lat. 30°03', long. 95°56'.

Date	Water level	Date	Water level	Date	Water level
June 16, 1950	13.49	June 17, 1953	17.35	Feb. 17, 1956	20.02
Dec. 18	17.20	Sept. 29	18.96	June 14	20.62
Feb. 26, 1951	17.23	Dec. 17	18.04	Sept. 20	22.01
June 15	16.84	Feb. 25, 1954	16.33	Dec. 13	22.15
Sept. 17	18.51	June 22	18.38	Feb. 15, 1957	22.15
Dec. 18	18.65	Sept. 29	20.26	June 12	19.88
Feb. 6, 1952	18.21	Dec. 21	20.25	Sept. 12	21.74
June 18	16.45	Feb. 8, 1955	19.55	Dec. 13	19.21
Sept. 18	18.75	June 20	20.29	Feb. 21, 1958	17.35
Dec. 31	18.76	Sept. 22	20.65	June 11	18.34
Feb. 9, 1953	18.62	Dec. 15	20.98		

E-7. Lat. 29°57', long. 96°01'. Diameter 20 inches.

Mar. 28, 1947	28.86	Nov. 21, 1950	43.73	Dec. 6, 1954	47.74
Mar. 18, 1948	31.15	Apr. 2, 1951	36.24	Mar. 15, 1955	42.20
Nov. 18	42.74	Nov. 14	45.15	Mar. 9, 1956	42.14
Mar. 8, 1949	33.56	Nov. 26, 1952	48.89	Mar. 15, 1957	46.29
Nov. 28	41.35	Mar. 31, 1953	41.29	Nov. 29	50.09
Mar. 15, 1950	40.21	Nov. 24	45.73	Mar. 20, 1958	44.19

F-11. Lat. 29°54', long. 95°54'. Diameter 18 to 13 inches, depth 810 feet.

Mar. 15, 1941	44.53	Jan. 20, 1942	44.10	Mar. 15, 1949	50.45
May 21	43.80	Mar. 18	43.85		
Oct. 28	47.33	Nov. 11, 1948	59.40		

F-17. Lat. 29°53', long. 95°57'. Diameter 24 inches, original depth 2,350 feet. Plugged back to 1,670 feet in 1948.

Mar. 28, 1946	34.65	Nov. 28, 1949	70.92	Mar. 16, 1954	67.65
Mar. 28, 1947	45.73	Mar. 14, 1950	62.00	Mar. 15, 1955	68.24
Mar. 18, 1948	45.20	Apr. 2, 1951	64.97	Mar. 14, 1956	70.40
Nov. 15	60.14	Mar. 13, 1952	65.84	Mar. 20, 1958	73.84
Mar. 8, 1949	64.89	Mar. 31, 1953	67.80		

F-21. Lat. 29°53', long. 95°53'. Diameter 16 to 12 inches, depth 524 feet, screens opposite sands below 110 feet.

Feb. 10, 1931	44.75	Mar. 15, 1939	50.16	Mar. 15, 1949	57.28
Mar. 17, 1933	46.03	Nov. 16, 1948	72.30	Mar. 18, 1954	70.51

WATER-LEVEL MEASUREMENTS IN WALLER COUNTY--CONTINUED

F-38. Lat. 29°50', long. 95°58'. Diameter 4 inches, depth 32 feet.

Date	Water level	Date	Water level	Date	Water level
Aug. 12, 1940	21.49	Oct. 22, 1941	15.73	Nov. 15, 1948	19.53
May 16, 1941	20.80	Jan. 20, 1942	16.73		
July 3	20.22	Mar. 18	17.41		

F-47. Lat. 29°52', long. 95°53'. Diameter 26 inches.

Apr. 28, 1931	46.79	Aug. 18, 1931	53.29	Mar. 15, 1939	53.31
June 12	54.26	Mar. 17, 1933	49.00		

F-48. Lat. 29°56', long. 95°55'. Diameter 18 inches, depth 842 feet.

Nov. 14, 1951	46.31	Mar. 16, 1954	52.57	Nov. 20, 1956	81.94
Mar. 13, 1952	36.60	Dec. 6	66.42	Mar. 15, 1957	60.10
Nov. 26	69.75	Mar. 15, 1955	54.13	Nov. 29	70.48
Mar. 31, 1953	51.29	Nov. 17	69.40	Mar. 20, 1958	57.72
Nov. 24	64.20	Mar. 14, 1956	54.49		

H-4. Lat. 29°49', long. 95°57'. Diameter 18 inches, depth 600 feet.

Mar. 15, 1941	58.58	Jan. 20, 1942	58.80	Mar. 15, 1949	68.64
May 16	59.50	Mar. 18	57.71		
Oct. 27	60.38	Nov. 10, 1948	76.08		

H-6. Lat. 29°48', long. 95°55'. Diameter 18 to 13 inches, depth 586 feet.

Mar. 15, 1949	67.4	Mar. 14, 1956	75.11	Mar. 20, 1958	78.25
Mar. 14, 1955	74.87	Mar. 13, 1957	77.53		

H-9 Lat. 29°48', long. 95°54'. Diameter 24 to 10 inches, depth 653 feet.

Mar. 14, 1955	77.36	Mar. 13, 1957	80.24	Mar. 20, 1958	81.21
Mar. 14, 1956	77.93				

H-11. Lat. 29°48', long. 95°53'. Diameter 12 inches, depth 478 feet.

Apr. 16, 1949	66.3	Mar. 14, 1956	79.81	Mar. 20, 1958	83.26
Mar. 14, 1955	78.54	Mar. 13, 1957	80.85		

WATER-LEVEL MEASUREMENTS IN WALLER COUNTY--CONTINUED

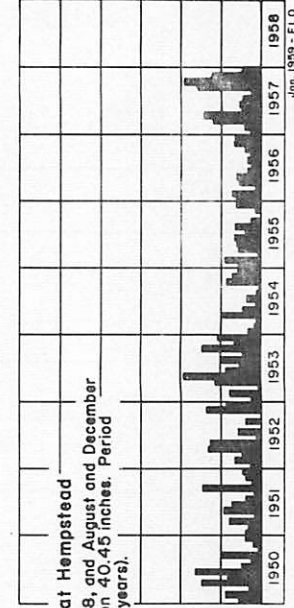
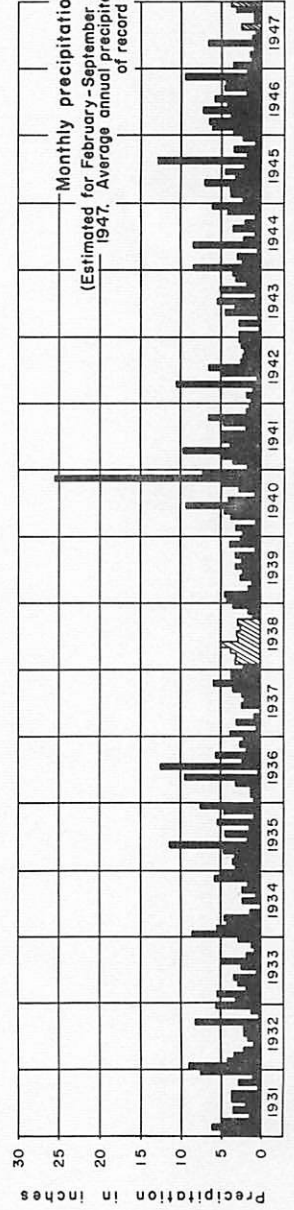
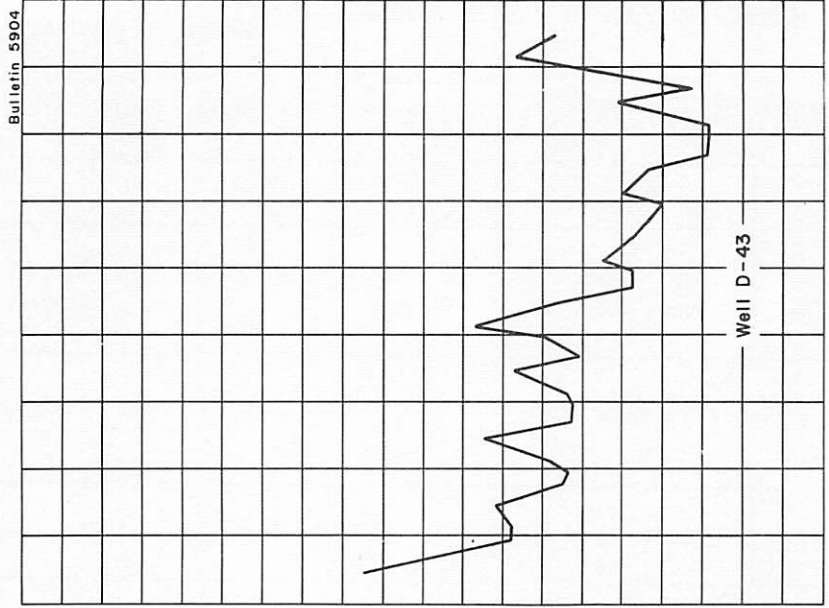
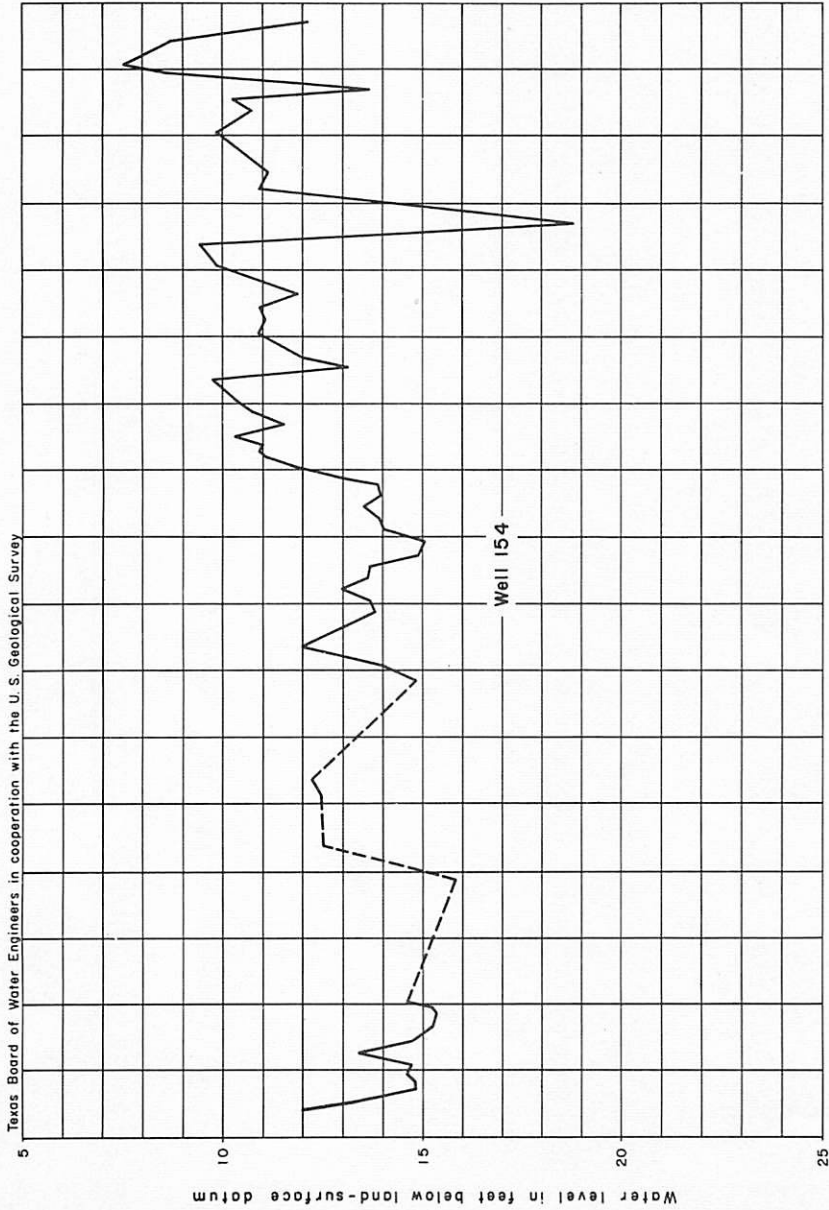
H-22. Lat. 29°48', long. 95°52'. Diameter 12 inches, depth 280 feet.

Date	Water level	Date	Water level	Date	Water level
Oct. 4, 1940	64.18	Jan. 20, 1942	63.00	Mar. 15, 1949	70.90
Jan. 22, 1941	63.24	Mar. 17	62.48		
Oct. 28	63.89	Nov. 16, 1948	69.76		

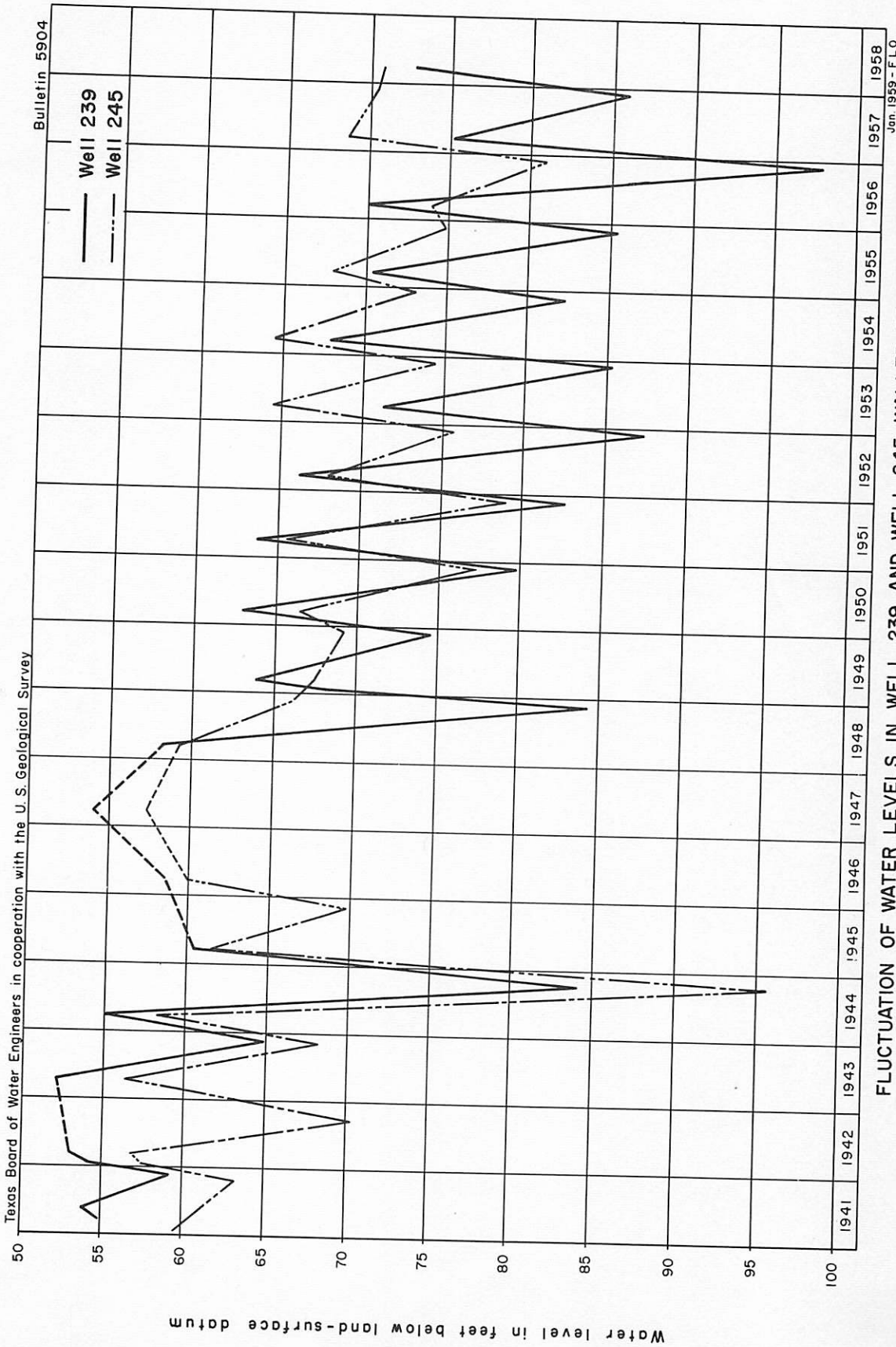
H-39. Lat. 29°48', long. 95°54'. Diameter 20 inches, depth 697 feet.

Mar. 17, 1954	75.68	Mar. 14, 1956	78.21	Mar. 20, 1958	82.06
Mar. 14, 1955	77.05	Mar. 13, 1957	82.22		





FLUCTUATION OF WATER LEVELS IN WELL 154 AND WELL D-43, WALLER COUNTY, AND MONTHLY PRECIPITATION AT HEMPSTEAD, TEXAS



FLUCTUATION OF WATER LEVELS IN WELL 239 AND WELL 245, WALLER COUNTY, TEXAS

Jan. 1959 - FLO