

TEXAS BOARD OF WATER ENGINEERS

Durwood Manford, Chairman
R. M. Dixon, Member
O. F. Dent, Member

BULLETIN 5901

RECORDS OF WATER-LEVEL MEASUREMENTS IN CHAMBERS, LIBERTY,
AND MONTGOMERY COUNTIES, TEXAS, 1931 THROUGH APRIL 1958

Compiled by

Frank A. Rayner, Geological Engineer
Texas Board of Water Engineers

Prepared in cooperation with the Geological Survey,
United States Department of the Interior

January 1959



C O N T E N T S

	Page
Introduction.	1
Water-level measurements in Chambers County	4
Water-level measurements in Liberty County.	14
Water-level measurements in Montgomery County	25

ILLUSTRATIONS

Observation wells in Chambers County, Texas	3
Hydrographs of water levels in wells C-13, B-20, G-60, and E-83, Chambers County, and annual precipitation at Anahuac, Texas.	11
Observation wells in Liberty County, Texas.	13
Hydrographs of water levels in wells 61 and 125, Liberty County, Texas.	22
Observation wells in Montgomery County, Texas	24
Hydrographs of water levels in wells 46, 22, and 145, Montgomery County, and annual precipitation at Conroe, Texas	33

1. The first part of the document discusses the importance of maintaining accurate records of all transactions. It emphasizes that this is essential for the proper management of the organization's finances and for ensuring compliance with relevant laws and regulations.

2. The second part of the document outlines the specific procedures that should be followed when recording transactions. This includes details on how to categorize expenses, how to handle receipts, and how to ensure that all entries are properly supported by documentation.

3. The third part of the document discusses the role of the accounting department in providing accurate and timely financial information to management. It highlights the importance of regular reporting and the need for transparency in all financial dealings.

RECORDS OF WATER-LEVEL MEASUREMENTS IN CHAMBERS, LIBERTY,
AND MONTGOMERY COUNTIES, TEXAS, 1931 THROUGH APRIL 1958

Compiled by
Frank A. Rayner, Geological Engineer
Texas Board of Water Engineers

January 1959

INTRODUCTION

The Texas Board of Water Engineers is charged with making, independently or in cooperation with other State and Federal agencies, scientific investigations of the source, amount and quality of ground-water supplies. To evaluate effects of ground-water development in relation to available supply, periodic measurements of water levels are made in principal reservoirs of the State through an observation well program conducted cooperatively by the Texas Board of Water Engineers and the United States Geological Survey.

This bulletin contains measurements of the depth to water in feet below land-surface datum in 30 wells in Chambers County, 36 wells in Liberty County, and 14 wells in Montgomery County. The composite period of record covers measurements made in observation wells from 1931 through April 1958.

An observation well location map precedes the corresponding tables of water-level measurements for each county. Hydrographs of water levels in selected wells in the subject counties follow the associated tables of water-level measurements. Annual precipitation charts for Anahuac and Conroe are combined with their respective hydrographs.

THE UNIVERSITY OF CHICAGO
DEPARTMENT OF CHEMISTRY

1950

RESEARCH REPORT

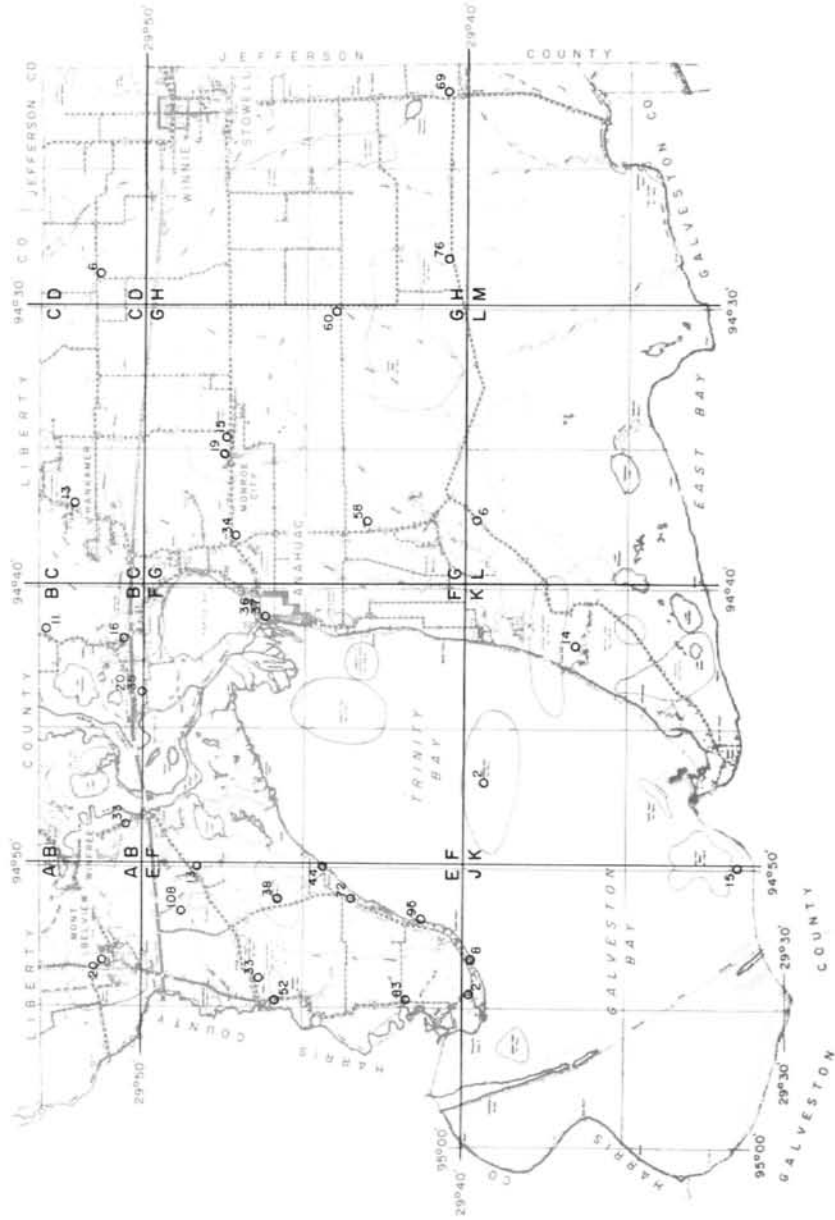
NO. 100

1950

The following is a summary of the work done in the Department of Chemistry during the year 1950. The work was carried out under the direction of Professor [Name], and the results are reported in the following papers:

[List of papers and authors]

C H A M B E R S C O U N T Y





WATER-LEVEL MEASUREMENTS IN CHAMBERS COUNTY, TEXAS

A-20. Lat. 29°51', long. 94°53'. Diameter 9 inches, depth 254 feet.

Date	Water level	Date	Water level	Date	Water level
Mar. 31, 1941	50.18	Nov. 3, 1950	77.23	Apr. 13, 1953	83.06
Mar. 1, 1948	66.87	Apr. 19, 1951	76.70	Oct. 16	84.57
Oct. 6	67.71	Oct. 15	79.00	Apr. 15, 1954	85.42
Apr. 27, 1949	67.15	Apr. 10, 1952	80.29	Oct. 13, 1955	83.07
Nov. 7	71.85	Oct. 10	82.18	Apr. 5, 1956	82.52

B-11. Lat. 29°52', long. 94°41'. Diameter 4 inches, depth 96 feet.

May 1, 1941	28.51	Apr. 28, 1949	25.28	Nov. 8, 1949	24.98
Nov. 18, 1948	26.15				

B-16. Lat. 29°50', long. 94°41'. Diameter 4 inches, depth 227 feet.

July 1, 1941	25.49	Nov. 1, 1950	18.86	Apr. 11, 1952	5.70
Oct. 6, 1948	25.20	Apr. 20, 1951	11.88	Oct. 9	14.09
Apr. 10, 1950	16.18	Oct. 11	8.30		

B-20. Lat. 29°50', long. 94°43'. Diameter 2 inches, depth 515 feet, screened from 495 to 515 feet.

July 15, 1941 +	6.2	Oct. 11, 1951	9.11	Apr. 4, 1956	6.87
Nov. 18, 1948	4.74	Apr. 11, 1952	9.25	Oct. 17	9.06
Apr. 28, 1949	4.44	Oct. 9	10.78	Apr. 5, 1957	8.70
Nov. 8	5.65	Feb. 13, 1953	11.21	Oct. 30	7.94
Apr. 10, 1950	6.48	Oct. 15	12.40	Apr. 10, 1958	5.89
Nov. 1	7.45	Apr. 14, 1954	13.30		
Apr. 20, 1951	8.03	Oct. 11, 1955	7.50		

B-33. Lat. 29°50', long. 94°48'. Diameter 4 to 2 inches, depth 540 feet.

Mar. 1, 1949	25.05	Nov. 3, 1950	25.22	Oct. 10, 1952	27.35
Nov. 7	24.93	Apr. 19, 1951	26.22	Oct. 16, 1953	27.13
Apr. 12, 1950	25.04	Oct. 15	26.37		

B-35. Lat. 29°50', long. 94°43'. Depth 595 feet.

Oct. 11, 1955	10.10	Oct. 17, 1956	10.94	Oct. 20, 1957	10.30
Apr. 4, 1956	9.07	Apr. 5, 1957	9.53	Apr. 10, 1958	8.42

WATER-LEVEL MEASUREMENTS IN CHAMBERS COUNTY--CONTINUED

C-13. Lat. 29°52', long. 94°37'. Diameter 2 inches, depth 181 feet.

Date	Water level	Date	Water level	Date	Water level
Apr. 15, 1941	9.35	Oct. 11, 1951	8.47	Oct. 11, 1955	9.29
Dec. 1, 1948	8.14	Apr. 10, 1952	8.06	Apr. 4, 1956	8.52
Nov. 8, 1949	8.55	Oct. 9	8.93	Oct. 17	9.37
Apr. 10, 1950	6.49	Apr. 13, 1953	8.67	Apr. 5, 1957	10.51
Nov. 1	7.44	Oct. 15	9.65	Oct. 30	9.94
Apr. 20, 1951	7.66	Apr. 14, 1954	9.87	Apr. 10, 1958	8.55

D-6. Lat. 29°51', long. 94°28'. Diameter 30 to 16 inches, depth 500 feet.

May 16, 1941	6.03	Apr. 20, 1951	9.05	Apr. 4, 1956	10.73
Mar. 15, 1949	6.85	Oct. 11	9.97	Apr. 5, 1957	12.16
Nov. 8	5.78	Apr. 11, 1952	10.86	Oct. 30	11.03
Apr. 10, 1950	8.15	Apr. 13, 1953	10.18	Apr. 10, 1958	12.59
Nov. 1	8.91	Apr. 14, 1954	10.97		

E-13. Lat. 29°48', long. 94°50'. Diameter 4 to 2 inches, depth 125 feet, screened from 115 to 125 feet.

Mar. 5, 1941	18.07	Nov. 3, 1950	21.90	Oct. 10, 1952	22.79
Oct. 27, 1948	19.82	Apr. 19, 1951	20.75	Apr. 13, 1953	23.00
Nov. 7, 1949	19.66	Oct. 15	21.46	Apr. 15, 1954	24.53
Apr. 12, 1950	21.22	Apr. 10, 1952	26.15	Oct. 13, 1955	23.69

E-33. Lat. 29°46', long. 94°54'. Diameter 4 to 2 inches, depth 290 feet, screened from 275 to 290 feet.

Apr. 2, 1941	9.51	Oct. 15, 1951	13.59	Apr. 5, 1956	6.98
Oct. 22, 1948	9.02	Apr. 10, 1952	11.68	Oct. 18	12.74
Apr. 27, 1949	5.64	Oct. 10	10.31	Apr. 9, 1957	5.45
Nov. 7	12.54	Apr. 13, 1953	9.26	Oct. 31	4.76
Apr. 12, 1950	9.07	Oct. 16	10.42	Apr. 7, 1958	2.27
Nov. 3	9.37	Apr. 15, 1954	9.14		
Apr. 19, 1951	10.27	Oct. 13, 1955	8.38		

E-38. Lat. 29°45', long. 94°51'. Diameter 5 inches, depth 475 feet, screened from 453 to 475 feet.

Apr. 19, 1941	43.44	Apr. 12, 1950	61.25	Oct. 13, 1955	82.43
Oct. 5, 1948	58.40	Nov. 3	64.80	Oct. 18, 1956	89.35
Apr. 27, 1949	59.13	Apr. 19, 1951	65.70		
Nov. 3	60.58	Oct. 15	67.80		

WATER-LEVEL MEASUREMENTS IN CHAMBERS COUNTY--CONTINUED

E-44. Lat. $29^{\circ}44'$, long. $94^{\circ}50'$. Diameter 4 inches, depth 240 feet, screened from 230 to 240 feet.

Date	Water level	Date	Water level	Date	Water level
Mar. 29, 1941	18.91	Apr. 19, 1951	22.58	Apr. 15, 1954	24.33
Oct. 5, 1948	21.38	Oct. 15	23.00	Apr. 5, 1956	25.98
Apr. 27, 1949	19.62	Apr. 10, 1952	25.51	Mar. 1957	30.5
Nov. 4	21.78	Oct. 10	23.92	Aug.	31.8
Apr. 12, 1950	22.17	Apr. 13, 1953	24.05		
Nov. 3	22.75	Oct. 16	24.84		

E-52. Lat. $29^{\circ}45'$, long. $94^{\circ}54'$. Diameter 4 inches, depth 387 feet.

Mar. 1, 1948	47.70	Apr. 19, 1951	48.76	Oct. 13, 1955	68.64
Oct. 6	46.85	Apr. 10, 1952	52.30	Apr. 5, 1956	71.83
Apr. 27, 1949	42.40	Oct. 10	52.32	Oct. 18	83.23
Nov. 4	43.18	Apr. 13, 1953	63.23	Apr. 9, 1957	73.98
Apr. 12, 1950	47.54	Oct. 16	65.76	Oct. 31	73.14
Nov. 3	43.24	Apr. 15, 1954	65.45	Apr. 7, 1958	71.40

E-72. Lat. $29^{\circ}43'$, long. $94^{\circ}51'$. Diameter 4 to 2 inches, depth 196 feet, screened from 184 to 192 feet.

Apr. 5, 1931	20.00	Apr. 19, 1951	82.01	Apr. 13, 1953	89.73
Apr. 6, 1941	44.53	Oct. 15	85.37	Apr. 15, 1954	91.53
Aug. 31, 1950	80.60	Apr. 10, 1952	85.65		
Nov. 3	80.80	Oct. 10	88.59		

E-83. Lat. $29^{\circ}41'$, long. $94^{\circ}54'$. Diameter 3 inches, depth 94 feet.

Apr. 5, 1941	15.88	Apr. 19, 1951	15.15	Oct. 13, 1955	18.94
Mar. 1, 1948	14.50	Oct. 15	15.18	Apr. 5, 1956	16.97
Oct. 6	14.48	Apr. 10, 1952	18.24	Oct. 18	21.46
Apr. 27, 1949	14.43	Oct. 10	15.68	Apr. 9, 1957	17.64
Nov. 7	14.75	Apr. 13, 1953	17.96	Oct. 31	16.30
Apr. 12, 1950	14.67	Oct. 16	18.49	Apr. 7, 1958	15.85
Nov. 3	14.90	Apr. 15, 1954	16.33		

E-95. Lat. $29^{\circ}41'$, long. $94^{\circ}52'$. Diameter 4 to 2 inches, depth 167 feet, screened from 157 to 167 feet.

Mar. 21, 1941	18.50	Apr. 27, 1949	18.03	Apr. 12, 1950	18.82
Oct. 5, 1948	19.70	Nov. 7	18.89		

WATER-LEVEL MEASUREMENTS IN CHAMBERS COUNTY--CONTINUED

E-108. Lat. 29°49', long. 94°52'. Depth 871 feet.

Date	Water level	Date	Water level	Date	Water level
Aug. 3, 1955	114.30	Oct. 18, 1956	99.67	Apr. 7, 1958	94.60
Oct. 13	90.99	Apr. 5, 1957	92.26		
Apr. 5, 1956	88.34	Oct. 31	97.94		

F-36. Lat. 29°46', long. 94°41'. Diameter 4 inches, depth 108 feet, screened from 93 to 108 feet.

Apr. 1947	12.0	Oct. 15, 1953	20.83	Apr. 4, 1956	19.23
Oct. 9, 1952	21.86	Apr. 14, 1954	21.20	Oct. 17	21.48
Apr. 8, 1953	20.54	Oct. 11, 1955	19.58	Apr. 5, 1957	20.11

F-37. Lat. 29°46', long. 94°41'. Diameter 3 inches, depth 96 feet, screened from 86 to 96 feet.

July 24, 1941	4.89	Nov. 8, 1949	7.87	Apr. 20, 1951	6.90
Oct. 6, 1948	9.08	Apr. 10, 1950	7.82	Oct. 11	7.84
Apr. 28, 1949	5.92	Nov. 1	8.68	Apr. 11, 1952	4.14

G-15. Lat. 29°47', long. 94°34'. Diameter 2 inches, depth 445 feet.

May 2, 1941	5.44	Nov. 1, 1950	13.24	Oct. 15, 1953	15.83
Dec. 1, 1948	11.91	Apr. 20, 1951	13.46	Apr. 14, 1954	16.07
Nov. 8, 1949	12.19	Oct. 11	13.90		
Apr. 10, 1950	12.60	Apr. 8, 1953	15.16		

G-19. Lat. 29°47', long. 94°35'. Diameter 4 inches, depth 358 feet, screened from 334 to 358 feet.

Apr. 7, 1941	10.8	Apr. 4, 1956	12.46	Oct. 30, 1957	19.84
Apr. 14, 1954	17.13	Oct. 17	19.56	Apr. 10, 1958	20.43
Oct. 11, 1955	18.72	Apr. 5, 1957	19.32		

WATER-LEVEL MEASUREMENTS IN CHAMBERS COUNTY--CONTINUED

G-34. Lat. $29^{\circ}47'$, long. $94^{\circ}38'$. Diameter 2 inches, depth 350 feet, screened from 340 to 350 feet.

Date	Water level	Date	Water level	Date	Water level
May 2, 1941	6.22	Apr. 11, 1952	14.92	Oct. 17, 1956	20.83
Mar. 16, 1949	12.47	Oct. 9	16.06	Apr. 5, 1957	22.15
Aug. 31, 1950	13.34	Apr. 8, 1953	16.02	Oct. 30	21.97
Nov. 1	13.74	Oct. 15	16.76	Apr. 10, 1958	21.32
Apr. 20, 1951	14.17	Apr. 14, 1954	16.97		
Oct. 11	14.74	Apr. 4, 1956	19.55		

G-58. Lat. $29^{\circ}42'$, long. $94^{\circ}37'$. Diameter 26 to 8 inches, depth 1,050 feet.

Apr. 4, 1941	5.43	Nov. 2, 1950	13.00	Apr. 11, 1952	13.26
Mar. 17, 1949	10.39	Apr. 23, 1951	13.73	Oct. 9	13.88
Aug. 31, 1950	12.71	Oct. 11	14.17	Apr. 13, 1953	13.53

G-60. Lat. $29^{\circ}44'$, long. $94^{\circ}30'$. Diameter 2 inches, depth 184 feet.

May 22, 1941	5.54	Apr. 23, 1951	10.89	Oct. 15, 1953	11.6
Dec. 1, 1948	9.45	Oct. 11	10.58	Apr. 14, 1954	10.99
Nov. 8, 1949	8.81	Apr. 11, 1952	10.96	Oct. 11, 1955 a	15.3
Apr. 10, 1950	9.02	Oct. 9	12.38	Apr. 4, 1956 a	15.2
Nov. 1	6.06	Apr. 8, 1953	13.17		

H-69. Lat. $29^{\circ}40'$, long. $94^{\circ}22'$. Diameter 2 inches, depth 180 feet.

July 16, 1941 +	2.9	Nov. 2, 1950 +	0.46	Oct. 22, 1953	0.46
Mar. 15, 1949 +	0.42	Apr. 23, 1951 +	0.09	Apr. 14, 1954	0.48
Nov. 9	+ 0.42	Apr. 11, 1952 +	0.71		
Apr. 11, 1950 +	0.41	Oct. 9	0.11		

H-76. Lat. $29^{\circ}40'$, long. $94^{\circ}28'$. Diameter 3 inches, depth 208 feet, screened from 188 to 208 feet.

May 20, 1941	0.05	Nov. 9, 1949 +	0.02	Nov. 2, 1950	1.02
Nov. 20, 1948	2.60	Apr. 11, 1950	0.12	Apr. 23, 1951	1.50

WATER-LEVEL MEASUREMENTS IN CHAMBERS COUNTY--CONTINUED

J-2. Lat. $29^{\circ}39'$, long. $94^{\circ}54'$. Diameter 2 inches, depth 550 feet, screened from 535 to 550 feet.

Date	Water level	Date	Water level	Date	Water level
Apr. 9, 1941	59.47	Nov. 3, 1950	102.47	Apr. 13, 1953	112.16
Mar. 1, 1948	88.30	Apr. 19, 1951	104.26	Oct. 13, 1955	120.45
Aug. 31, 1950	102.70	Apr. 10, 1952	108.53		

J-8. Lat. $29^{\circ}39'$, long. $94^{\circ}53'$. Diameter 6 to 4 inches, depth 709 feet, screened from 666 to 687 feet.

Oct. 5, 1948	92.60	Apr. 19, 1952	105.52	Apr. 5, 1956	116.81
Apr. 27, 1949	93.45	Oct. 10	106.91	Oct. 18	122.79
Nov. 7	97.25	Apr. 13, 1953	108.83	Apr. 9, 1957	121.96
Apr. 12, 1950	97.32	Oct. 16	110.1	Oct. 31	124.34
Nov. 3	100.53	Apr. 15, 1954	109.83	Apr. 7, 1958	122.03
Apr. 19, 1951	101.10	Oct. 13, 1955	116.85		

J-15. Lat. $29^{\circ}31'$, long. $94^{\circ}50'$. Diameter 4 inches, depth 708 feet, screened from 655 to 708 feet.

Dec. 16, 1948	59.63	May 4, 1951	58.56	Apr. 15, 1953	59.96
Aug. 25, 1950	58.87	May 20, 1952	61.59	Apr. 29, 1954	62.47

K-2. Lat. $29^{\circ}39'$, long. $94^{\circ}47'$. Diameter 4 inches, depth 597 feet, screened from 564 to 597 feet.

May 15, 1942	4.40	May 4, 1951	24.74	Apr. 29, 1954	28.77
Dec. 16, 1948	18.15	May 20, 1952	24.95		
Aug. 25, 1950	22.91	Apr. 16, 1953	27.00		

K-14. Lat. $29^{\circ}37'$, long. $94^{\circ}42'$. Diameter 5 inches, depth 223 feet, screened from 203 to 223 feet.

Apr. 1944	18.8	Oct. 11, 1951	5.72	Oct. 11, 1955	6.45
Mar. 17, 1949	4.60	Apr. 11, 1952	6.09	Apr. 4, 1956	6.39
Nov. 9	22.12	Oct. 9	6.54	Apr. 5, 1957	6.53
Apr. 11, 1950	7.22	Apr. 8, 1953	5.99	Oct. 30	6.58
Nov. 2	6.34	Oct. 15	6.26	Apr. 10, 1958	6.28
Apr. 23, 1951	6.27	Apr. 14, 1954	6.82		

WATER-LEVEL MEASUREMENTS IN CHAMBERS COUNTY--CONTINUED

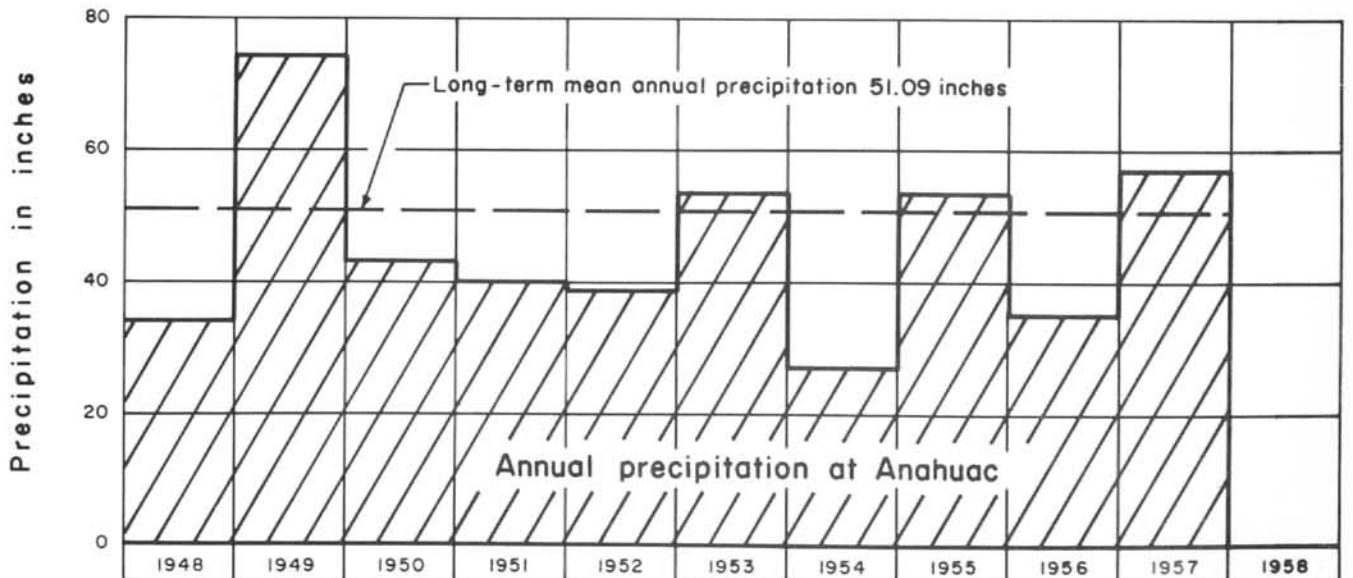
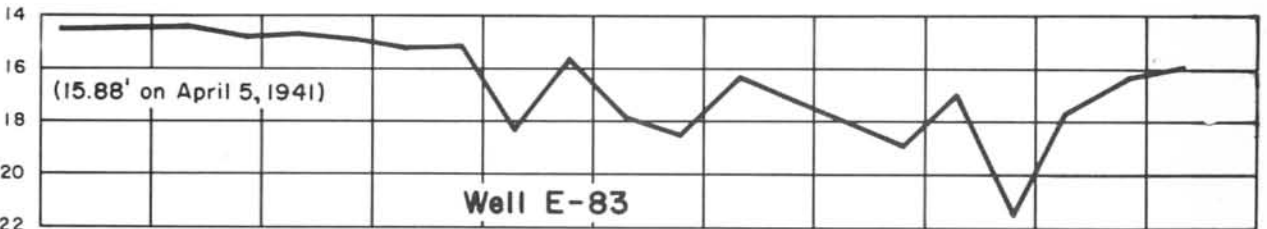
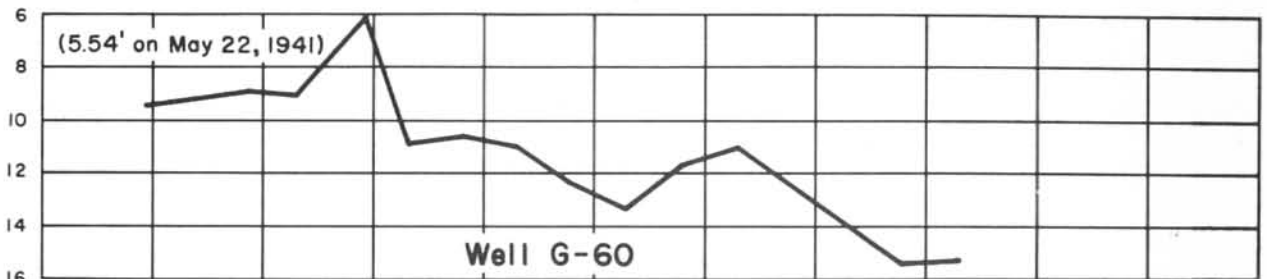
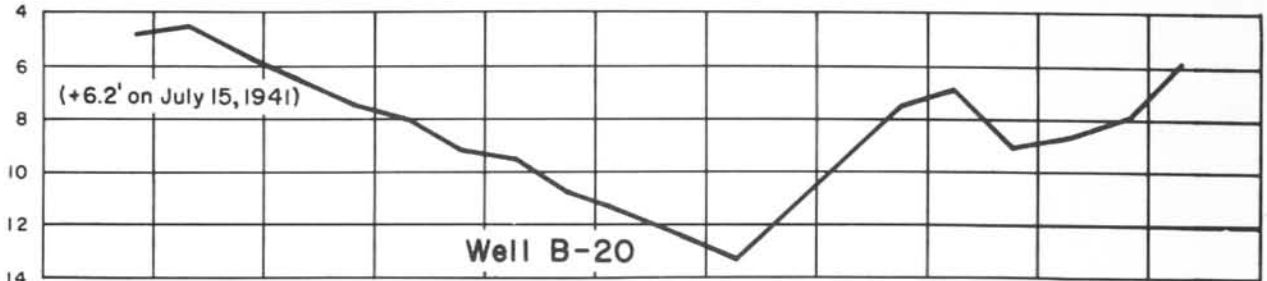
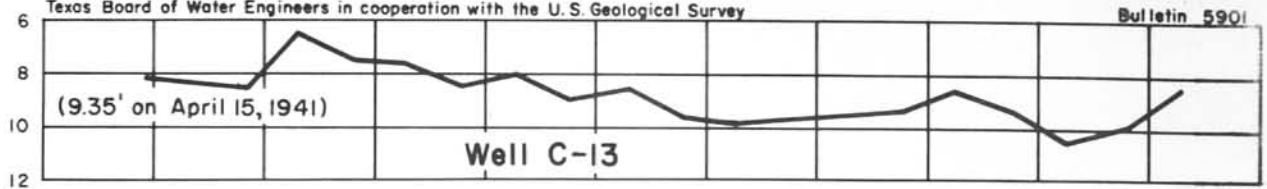
L-6. Lat. $29^{\circ} 39'$, long. $94^{\circ} 37'$. Diameter 2 inches, depth 596 feet, screened from 581 to 596 feet.

Date	Water level	Date	Water level	Date	Water level
Mar. 17, 1948	2.84	Nov. 2, 1950	18.27	Apr. 11, 1952	0.46
Nov. 9, 1949	6.12	Apr. 23, 1951	19.65		
Apr. 11, 1950	13.94	Oct. 11	19.52		

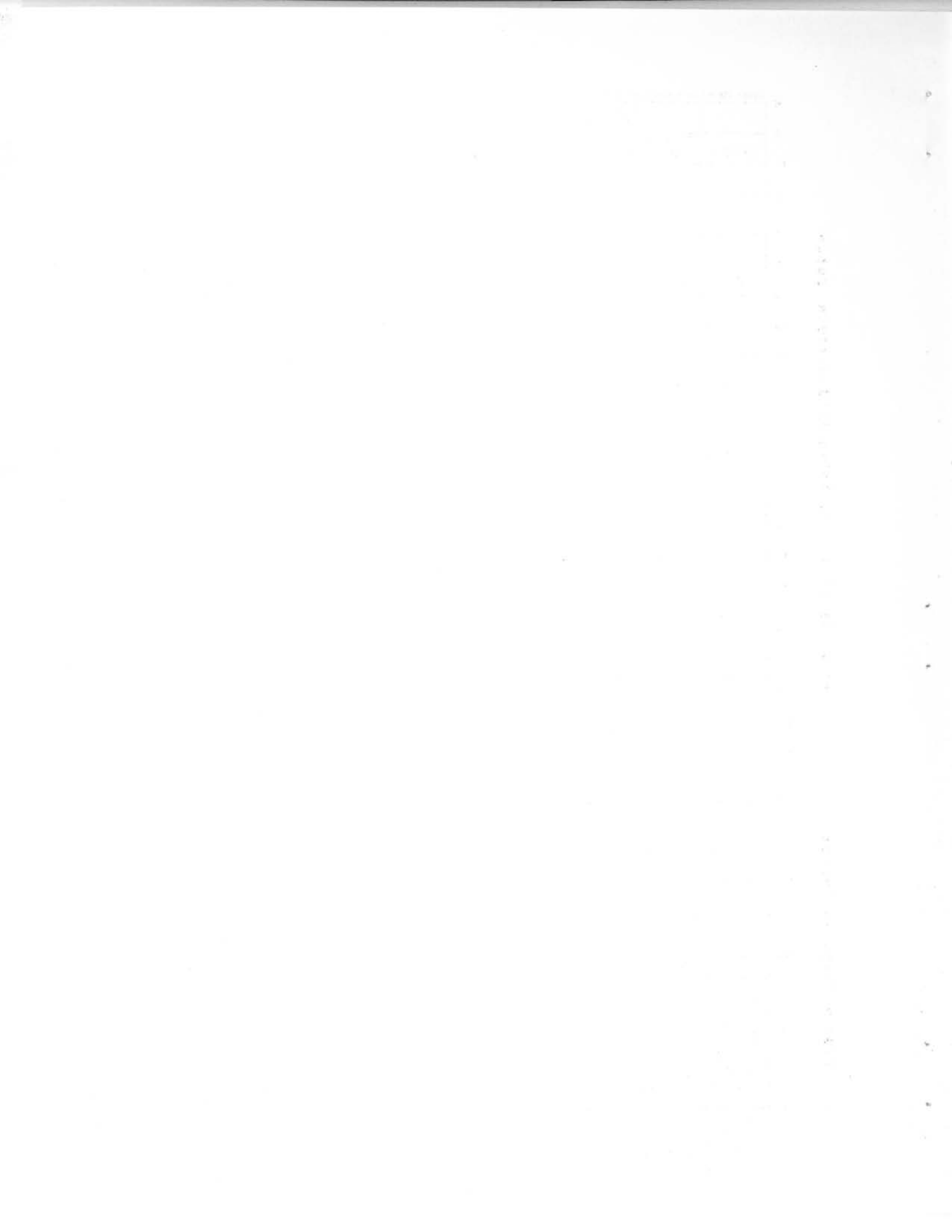
a Pumping

+ Plus sign (+) indicates water level above land-surface datum.

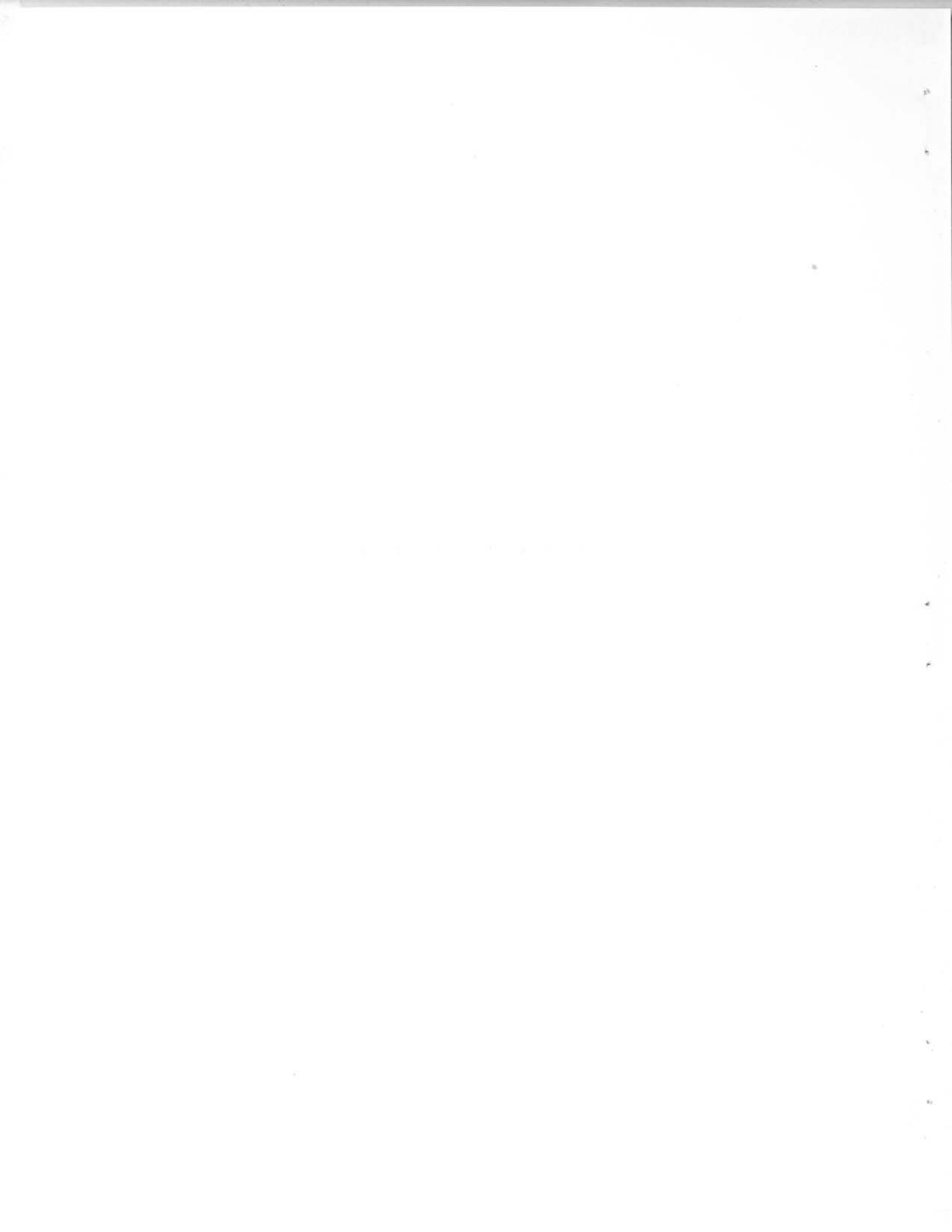
Water level in feet below land-surface datum

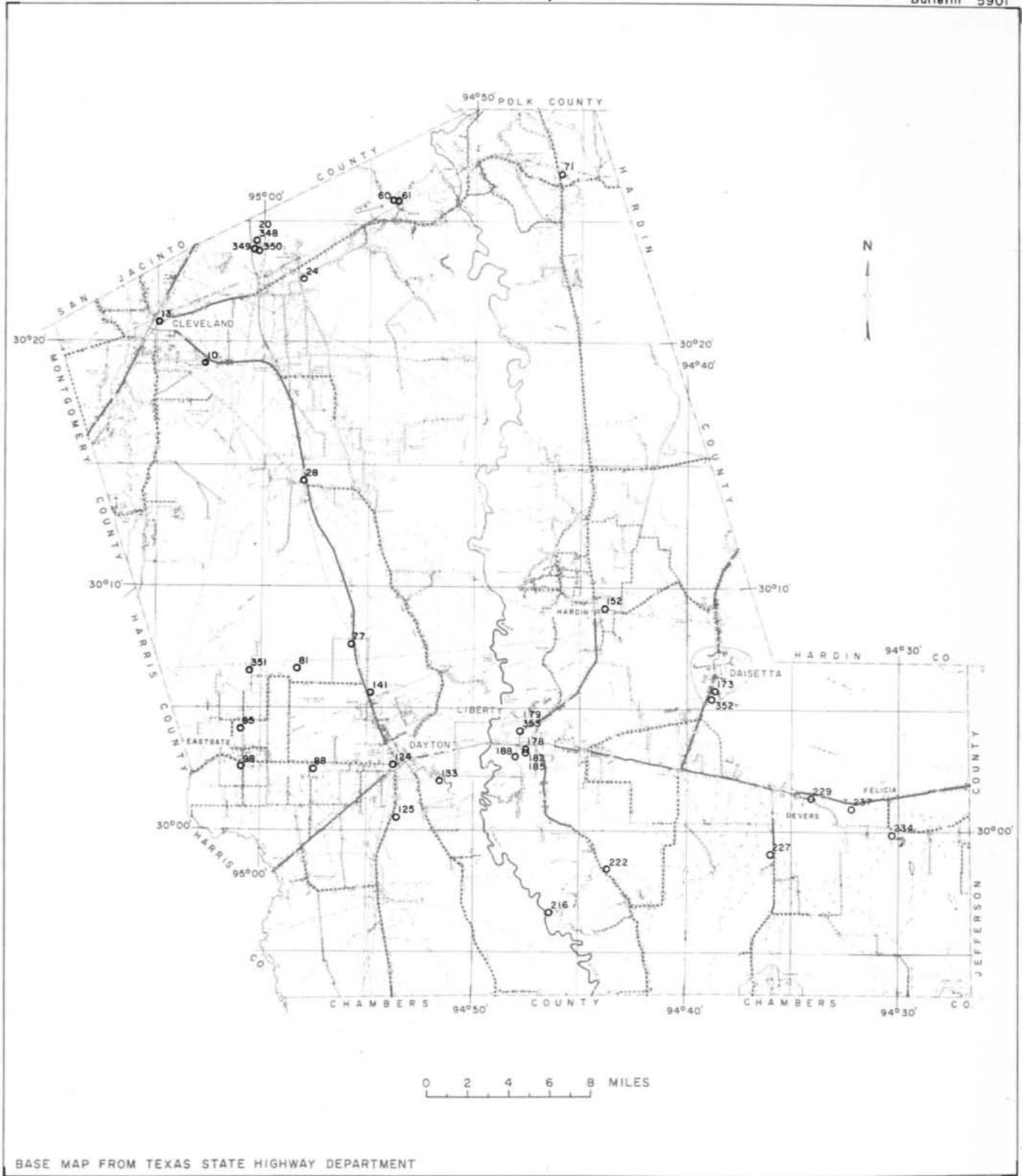


HYDROGRAPHS OF WATER LEVELS IN WELLS C-13, B-20, G-60 AND E-83, CHAMBERS COUNTY, AND ANNUAL PRECIPITATION AT ANAHUAC, TEXAS



LIBERTY COUNTY





BASE MAP FROM TEXAS STATE HIGHWAY DEPARTMENT

FLO

OBSERVATION WELLS IN LIBERTY COUNTY, TEXAS
DECEMBER 1958

WATER-LEVEL MEASUREMENTS IN LIBERTY COUNTY, TEXAS

10. Lat. 30°19', long. 95°02'. Diameter 4 inches, depth 304 feet.

Date	Water level	Date	Water level	Date	Water level
June 8, 1945	6.25	Apr. 5, 1950	3.90	Apr. 9, 1952	8.75
Oct. 20, 1948	9.50	Oct. 30	8.64	Oct. 7	11.26
Mar. 14, 1949	7.35	Apr. 16, 1951	7.61	Apr. 10, 1957	12.68
Oct. 31	6.09	Oct. 10	10.02		

13. Lat. 30°20', long. 95°05'. Diameter 6 inches, depth 200 feet.

Jan. 26, 1945	28.40	Apr. 5, 1950	21.90	Apr. 9, 1952	26.33
Oct. 30, 1948	26.58	Oct. 30	24.12	Apr. 9, 1953	25.43
Mar. 14, 1949	25.55	Apr. 16, 1951	24.59	Oct. 14	26.46
Oct. 31	23.22	Oct. 10	25.85	Apr. 13, 1954	25.71

20. Lat. 30°24', long. 95°00'. Diameter 18 to 12 inches, depth 226 feet, casing slotted opposite sands below 57 feet.

June 16, 1943	32	Apr. 16, 1951	25.38	Apr. 3, 1956	30.23
Oct. 21, 1948 c	37.58	Oct. 10	29.17	Oct. 16	43.69
Mar. 15, 1949	26.45	Apr. 9, 1952	26.87	Apr. 10, 1957	31.00
Nov. 3	26.81	Oct. 7	30.80	Oct. 29	32.29
Apr. 5, 1950	27.09	Apr. 9, 1953	29.67		
Oct. 30	27.83	Oct. 12, 1955	31.05		

24. Lat. 30°22', long. 94°58'. Diameter 8 inches, depth 52 feet.

Apr. 5, 1945	33.50	Oct. 30, 1950	28.92	Apr. 9, 1953	32.42
Oct. 20, 1948	31.09	Apr. 16, 1951	29.85	Oct. 14	32.76
Mar. 15, 1949	30.47	Oct. 10	30.62	Apr. 13, 1954	33.17
Nov. 3	30.62	Apr. 9, 1952	31.38	Oct. 12, 1955	34.02
Apr. 5, 1950	29.21	Oct. 7	32.02		

28. Lat. 30°14', long. 94°58'. Diameter 4 inches, depth 204 feet.

Jan. 25, 1945	39.45	Oct. 30, 1950	48.13	Apr. 9, 1953	49.60
Oct. 20, 1948	46.53	Apr. 16, 1951	46.03	Oct. 14	52.25
Mar. 17, 1949	44.50	Oct. 10	51.08	Apr. 13, 1954	49.94
Oct. 31	46.22	Apr. 9, 1952	48.44	Oct. 12, 1955	53.84
Apr. 5, 1950	43.46	Oct. 7	51.51		

WATER-LEVEL MEASUREMENTS IN LIBERTY COUNTY--CONTINUED

60. Lat. $30^{\circ}25'$, long. $94^{\circ}53'$. Diameter 8 inches, depth 56 feet.

Date	Water level	Date	Water level	Date	Water level
Apr. 4, 1945	47.85	Nov. 3, 1949	48.00	Apr. 16, 1951	48.09
Oct. 20, 1948	47.51	Apr. 5, 1950	47.29		
Mar. 15, 1949	48.80	Oct. 30	47.27		

61. Lat. $30^{\circ}25'$, long. $94^{\circ}53'$. Diameter 4 inches, depth 140 feet, screened from 130 to 140 feet.

Apr. 4, 1945	49.50	Oct. 10, 1951	56.88	Apr. 3, 1956	57.30
Oct. 20, 1948	55.64	Apr. 9, 1952	54.28	Oct. 16	59.51
Mar. 15, 1949	53.88	Oct. 7	56.33	Apr. 4, 1957	56.76
Nov. 3	53.52	Apr. 9, 1953	54.45	Oct. 29	55.59
Apr. 5, 1950	52.04	Oct. 14	59.20	Apr. 9, 1958	53.83
Oct. 30	54.94	Apr. 13, 1954	54.84		
Apr. 16, 1951	53.97	Oct. 12, 1955	57.71		

71. Lat. $30^{\circ}26'$, long. $94^{\circ}46'$. Diameter 4 inches, depth 165 feet.

Jan. 11, 1945	41.50	Apr. 16, 1951	41.40	Apr. 13, 1954	43.27
Oct. 21, 1948	42.50	Oct. 10	42.66	Oct. 12, 1955	43.30
Mar. 15, 1949	41.66	Apr. 9, 1952	42.12	Apr. 3, 1956	42.77
Nov. 3	41.58	Oct. 7	43.47	Apr. 4, 1957	44.11
Apr. 5, 1950	39.56	Apr. 9, 1953	42.63	Oct. 29	44.25
Oct. 30	44.5	Oct. 14	43.00		

77. Lat. $30^{\circ}07'$, long. $94^{\circ}55'$. Diameter 20 to 12 inches, depth 742 feet, casing slotted opposite sands below 150 feet.

Apr. 19, 1945	48.33	Apr. 13, 1951	66.68	Oct. 12, 1955	78.20
Feb. 19, 1948	58.52	Oct. 9	84.72	Apr. 3, 1956	63.98
Oct. 15	85.29	Apr. 10, 1952	66.64	Oct. 15	76.24
Mar. 14, 1949	62.69	Oct. 6	100.61	Apr. 10, 1957	68.98
Oct. 31	76.10	Apr. 7, 1953	67.21	Oct. 28	78.52
Apr. 5, 1950	61.42	Oct. 13	97.32	Apr. 8, 1958	64.91
Oct. 19	78.93	Apr. 12, 1954	70.98		

WATER-LEVEL MEASUREMENTS IN LIBERTY COUNTY--CONTINUED

81. Lat. $30^{\circ}06'$, long. $94^{\circ}58'$. Diameter 20 to 8 inches, depth 1,000 feet, casing slotted opposite sands below 120 feet.

Date	Water level	Date	Water level	Date	Water level
Apr. 19, 1945	38.55	Oct. 31, 1950	82.10	Apr. 2, 1956	69.49
Oct. 15, 1948	84.09	Apr. 13, 1951	62.58	Apr. 10, 1957	75.79
Mar. 17, 1949	55.04	Apr. 8, 1952	69.20	Oct. 28	90.94
Apr. 3, 1950	54.99	Apr. 7, 1953	66.19		

85. Lat. $30^{\circ}04'$, long. $95^{\circ}00'$. Diameter 24 to 12 inches, depth 808 feet, casing slotted opposite sands below 135 feet.

Mar. 1944	57	Apr. 13, 1951	68.82	Apr. 2, 1956	76.77
Feb. 19, 1948	55.09	Oct. 9	95.49	Oct. 15	109.33
Mar. 17, 1949	60.63	Apr. 8, 1952	70.80	Apr. 10, 1957	80.23
Oct. 31	78.97	Oct. 6	102.29	Oct. 28	97.60
Apr. 3, 1950	61.51	Oct. 13, 1953	96.00	Apr. 8, 1958	88.99
Oct. 31	85.92	Oct. 10, 1955	98.50		

88. Lat. $30^{\circ}02'$, long. $94^{\circ}57'$. Diameter 20 to 12 inches, casing slotted opposite sands below 240 feet.

Apr. 18, 1945	52.82	Apr. 3, 1950	67.66	Oct. 6, 1952	107.50
Feb. 19, 1948	58.90	Oct. 19	95.40	Apr. 7, 1953	78.49
Oct. 15	90.89	Apr. 13, 1951	75.22	Oct. 10, 1955	107.98
Mar. 14, 1949	64.35	Oct. 9	97.30	Apr. 3, 1956	89.20
Oct. 31	71.30	Apr. 8, 1952	76.53	Apr. 10, 1957	92.45

98. Lat. $30^{\circ}02'$, long. $95^{\circ}00'$. Diameter 4 inches, depth 540 feet.

Apr. 1945	27.1	Mar. 14, 1949	57.80	Oct. 19, 1950	83.02
Feb. 19, 1948	53.00	Oct. 31	72.46	Apr. 17, 1951	66.20
Oct. 15	74.10	Apr. 3, 1950	58.30		

124. Lat. $30^{\circ}02'$, long. $94^{\circ}53'$. Diameter 4 inches, depth 685 feet, screened from 665 to 685 feet.

Jan. 27, 1945	59	Oct. 31, 1949	72.33	Oct. 9, 1951	84.73
Oct. 15, 1948	73.10	Apr. 3, 1950	63.66	Apr. 7, 1953	72.65
Mar. 14, 1949	62.40	Apr. 13, 1951	69.40		

WATER-LEVEL MEASUREMENTS IN LIBERTY COUNTY--CONTINUED

125. Lat. 30°00', long. 94°53'. Diameter 6 inches, depth 400 feet.

Date	Water level	Date	Water level	Date	Water level
Jan. 27, 1945	49.46	Apr. 3, 1950	62.61	Oct. 14, 1953	80.85
Feb. 20, 1948	56.96	Oct. 19	73.98	Apr. 12, 1954	76.87
Oct. 15	66.91	Apr. 13, 1951	69.59	Apr. 3, 1956	80.14
Mar. 14, 1949	61.03	Apr. 8, 1952	70.35	Apr. 10, 1957	82.80
Oct. 31	67.49	Oct. 6	81.61	Apr. 8, 1958	80.66

133. Lat. 30°02', long. 94°51'. Diameter 6 inches, depth 350 feet.

June 15, 1945	7.95	Mar. 17, 1949	18.56	Apr. 3, 1950	20.87
Oct. 18, 1948	23.50	Oct. 31	24.18		

141. Lat. 30°05', long. 94°54'. Diameter 4 inches, depth 413 feet.

Feb. 19, 1948	48.28	Apr. 13, 1951	68.78	Apr. 12, 1954	78.07
Oct. 20	85.20	Oct. 9	93.48	Oct. 12, 1955	98.22
Mar. 14, 1949	61.68	Apr. 8, 1952	70.64	Apr. 3, 1956	77.55
Oct. 31	78.85	Oct. 6	100.07	Oct. 15	102.04
Apr. 3, 1950	61.92	Apr. 9, 1953	73.71	Apr. 10, 1957	82.99
Oct. 19	87.25	Oct. 13	94.25	Apr. 8, 1958	83.37

152. Lat. 30°09', long. 94°43'. Diameter 4 inches, depth 228 feet.

June 7, 1945	34.90	Apr. 5, 1950	38.31	Oct. 7, 1952	56.99
Feb. 20, 1948	36.81	Oct. 31	45.27	Apr. 10, 1953	44.08
Oct. 21	40.52	Apr. 16, 1951	41.06	Apr. 13, 1954	48.07
Mar. 15, 1949	39.50	Oct. 10	52.53		
Nov. 3	42.72	Apr. 9, 1952	42.78		

173. Lat. 30°05', long. 94°38'. Diameter 5 inches, depth 255 feet, screened from 228 to 255 feet.

Feb. 20, 1948	24.55	Oct. 10, 1951	49.60	Apr. 3, 1956	40.71
Oct. 19	38.00	Apr. 9, 1952	36.44	Oct. 16	80.70
Mar. 16, 1949	29.14	Oct. 7	54.54	Apr. 4, 1957	47.69
Nov. 1	39.64	Apr. 10, 1953	37.69	Oct. 29	77.33
Apr. 6, 1950	32.39	Oct. 14	50.91	Apr. 9, 1958	46.87
Oct. 20	46.03	Apr. 13, 1954	45.39		
Apr. 18, 1951	34.07	Oct. 12, 1955	59.70		

WATER-LEVEL MEASUREMENTS IN LIBERTY COUNTY--CONTINUED

178. Lat. $30^{\circ}03'$, long. $94^{\circ}47'$. Diameter 8 inches, depth 680 feet.

Date	Water level	Date	Water level	Date	Water level
Dec. 7, 1944	+7	Oct. 19, 1950	6.18	Apr. 7, 1953	11.33
Oct. 18, 1948	+0.68	Apr. 17, 1951	3.74	Oct. 13	17.53
Mar. 16, 1949	+2.12	Oct. 12	11.26	Apr. 12, 1954	14.70
Nov. 1	2.12	Apr. 9, 1952	7.26		
Apr. 5, 1950	0.93	Oct. 6	13.56		

179. Lat. $30^{\circ}04'$, long. $94^{\circ}47'$. Diameter 13 to 7 inches, depth 565 feet, screened in two sands from 445 to 562 feet.

Nov. 26, 1943	+0.58	Apr. 17, 1951	32.20	Oct. 10, 1955	48.48
Dec. 8, 1944	1.15	Oct. 12	39.2	Apr. 3, 1956	53.80
Oct. 18, 1948 c	30.98	Apr. 9, 1952	30.06	Oct. 16	64.86
Mar. 16, 1949	17.10	Oct. 6	43.62	Apr. 10, 1957	55.43
Nov. 1 c	32.13	Apr. 7, 1953	36.36	Oct. 29	58.41
Apr. 5, 1950	22.37	Oct. 13	51.19	Apr. 9, 1958	51.04
Oct. 19	30.24	Apr. 12, 1954	41.62		

182. Lat. $30^{\circ}03'$, long. $94^{\circ}47'$. Diameter 4 inches, depth 651 feet.

Nov. 7, 1944	+8	Apr. 17, 1951	12.26	Apr. 12, 1954	22.59
Oct. 18, 1948	8.75	Oct. 12	19.84	Apr. 3, 1956	29.39
Mar. 16, 1949	6.17	Apr. 9, 1952	15.24	Oct. 16	41.05
Nov. 1	10.59	Oct. 6	22.17	Oct. 29, 1957	35.64
Apr. 5, 1950	9.41	Apr. 7, 1953	19.95	Apr. 9, 1958	30.98
Oct. 19	14.69	Oct. 13	26.13		

185. Lat. $30^{\circ}03'$, long. $94^{\circ}47'$. Diameter 4 inches, depth 119 feet, screened from 98 to 108 feet.

Dec. 7, 1944	17.60	Oct. 18, 1948	21.68	Mar. 16, 1949	15.12
--------------	-------	---------------	-------	---------------	-------

188. Lat. $30^{\circ}03'$, long. $94^{\circ}48'$. Diameter 8 inches, depth 260 feet.

Dec. 9, 1944	+5	Nov. 1, 1949	6.91	Oct. 19, 1950	11.67
Mar. 17, 1949	+0.86	Apr. 7, 1950	2.07	Apr. 17, 1951	6.36

WATER-LEVEL MEASUREMENTS IN LIBERTY COUNTY--CONTINUED

216. Lat. 29°56', long. 94°46'. Diameter 3 inches, depth 176 feet, screened from 170 to 176 feet.

Date	Water level	Date	Water level	Date	Water level
Dec. 8, 1944	3.60	Oct. 20, 1950	6.73	Apr. 7, 1953	8.12
Oct. 19, 1948	6.85	Apr. 17, 1951	7.33	Oct. 13	8.80
Mar. 16, 1949	4.20	Oct. 9	8.23	Apr. 14, 1954	7.53
Nov. 1	4.28	Apr. 11, 1952	7.89		
Apr. 6, 1950	5.62	Oct. 8	8.89		

222. Lat. 29°58', long. 94°43'. Diameter 4 inches, depth 275 feet, screened from 261 to 273 feet.

June 16, 1945	10.73	Apr. 6, 1950	18.36	Apr. 11, 1952	23.24
Oct. 19, 1948	15.52	Oct. 20	21.58	Oct. 8	25.26
Mar. 16, 1949	14.34	Apr. 17, 1951	20.96	Apr. 7, 1953	20.00
Nov. 1	17.40	Oct. 9	23.06		

227. Lat. 29°59', long. 94°36'. Diameter 4 inches, depth 406 feet, screened from 384 to 404 feet.

Feb. 20, 1948	19.43	Mar. 16, 1949	24.24	Apr. 7, 1950	26.18
Oct. 19	30.43	Nov. 2	32.61		

229. Lat. 30°01', long. 94°34'. Diameter 2 inches, depth 99 feet, screened from 74 to 79 feet.

Jan. 23, 1945	8.80	Nov. 2, 1949	9.07	Oct. 12, 1951	8.66
Feb. 20, 1948	8.85	Apr. 7, 1950	6.44	Apr. 8, 1952	5.55
Oct. 19	13.14	Oct. 20	8.11		
Mar. 17, 1949	9.16	Apr. 18, 1951	6.14		

234. Lat. 30°00', long. 94°30'. Diameter 6 inches, depth 180 feet.

Jan. 17, 1945	13.10	Apr. 7, 1950	13.20	Oct. 8, 1952	17.98
Feb. 20, 1948	12.56	Oct. 20	14.99	Oct. 14, 1953	18.39
Oct. 19	14.60	Apr. 18, 1951	14.95	Apr. 13, 1954	19.04
Mar. 16, 1949	14.14	Oct. 12	15.52		
Nov. 2	14.32	Apr. 8, 1952	15.32		

WATER-LEVEL MEASUREMENTS IN LIBERTY COUNTY--CONTINUED

237. Lat. 30°01', long. 94°32'. Diameter 8 to 6 inches, depth 492 feet, screened from 429 to 492 feet.

Date	Water level	Date	Water level	Date	Water level
June 20, 1945	11.92	Apr. 18, 1951	19.96	Oct. 12, 1955	31.05
Feb. 20, 1948	13.00	Oct. 12	25.29	Apr. 4, 1956	28.64
Oct. 19	16.95	Apr. 9, 1952	22.19	Oct. 16	31.64
Mar. 17, 1949	16.48	Oct. 8	27.34	Apr. 4, 1957	29.87
Nov. 2	19.38	Apr. 10, 1953	24.15	Oct. 29	31.18
Apr. 7, 1950	18.57	Oct. 14	28.99	Apr. 9, 1958	29.10
Oct. 20	22.32	Apr. 13, 1954	25.12		

348. Lat. 30°24', long. 95°00'.

Oct. 21, 1948	38.00	Oct. 10, 1951	32.57	Apr. 3, 1956	35.53
Mar. 15, 1949	26.03	Apr. 9, 1952	26.57	Oct. 16	49.20
Nov. 3	27.54	Oct. 7	34.66	Apr. 10, 1957	34.22
Apr. 5, 1950	25.96	Apr. 9, 1953	27.58	Oct. 29	42.14
Oct. 30	31.32	Apr. 13, 1954	35.94	Apr. 8, 1958	34.88
Apr. 16, 1951	25.93	Oct. 12, 1955	37.57		

349. Lat. 30°23', long. 95°00'.

Mar. 15, 1949	37.32	Apr. 5, 1950	35.69	Oct. 10, 1951	39.09
Nov. 3	37.45	Oct. 30	37.43	Apr. 9, 1952	38.03

350. Lat. 30°23', long. 95°00'.

Mar. 15, 1949	36.05	Apr. 16, 1951	36.33	Apr. 9, 1953	38.24
Nov. 3	36.62	Oct. 10	38.05	Oct. 14	40.06
Apr. 5, 1950	35.18	Apr. 9, 1952	37.64	Apr. 13, 1954	41.30
Oct. 30	36.49	Oct. 7	38.98	Apr. 3, 1956	40.58

351. Lat. 30°06', long. 95°00'.

Mar. 17, 1949	46.85	Oct. 9, 1951	78.64	Oct. 15, 1956	94.85
Nov. 2	63.20	Apr. 8, 1952	54.54	Apr. 10, 1957	66.33
Mar. 3, 1950	46.17	Oct. 6	85.05	Oct. 28, 1957	82.66
Oct. 31	69.57	Oct. 10, 1955	83.00	Apr. 8, 1958	64.54
Apr. 13, 1951	52.00	Apr. 2, 1956	62.39		

WATER-LEVEL MEASUREMENTS IN LIBERTY COUNTY--CONTINUED

352. Lat. $30^{\circ}05'$, long. $94^{\circ}38'$. Diameter 6 inches, depth 97 Feet, screened from 77 to 97 feet.

Date	Water level	Date	Water level	Date	Water level
Feb. 20, 1948	11.04	Apr. 6, 1950	11.01	Apr. 8, 1952	15.71
Oct. 19	15.94	Oct. 20	15.69	Apr. 10, 1953	17.03
Mar. 16, 1949	13.75	Apr. 18, 1951	15.35	Oct. 14	18.11
Nov. 1	13.51	Oct. 10	17.39		

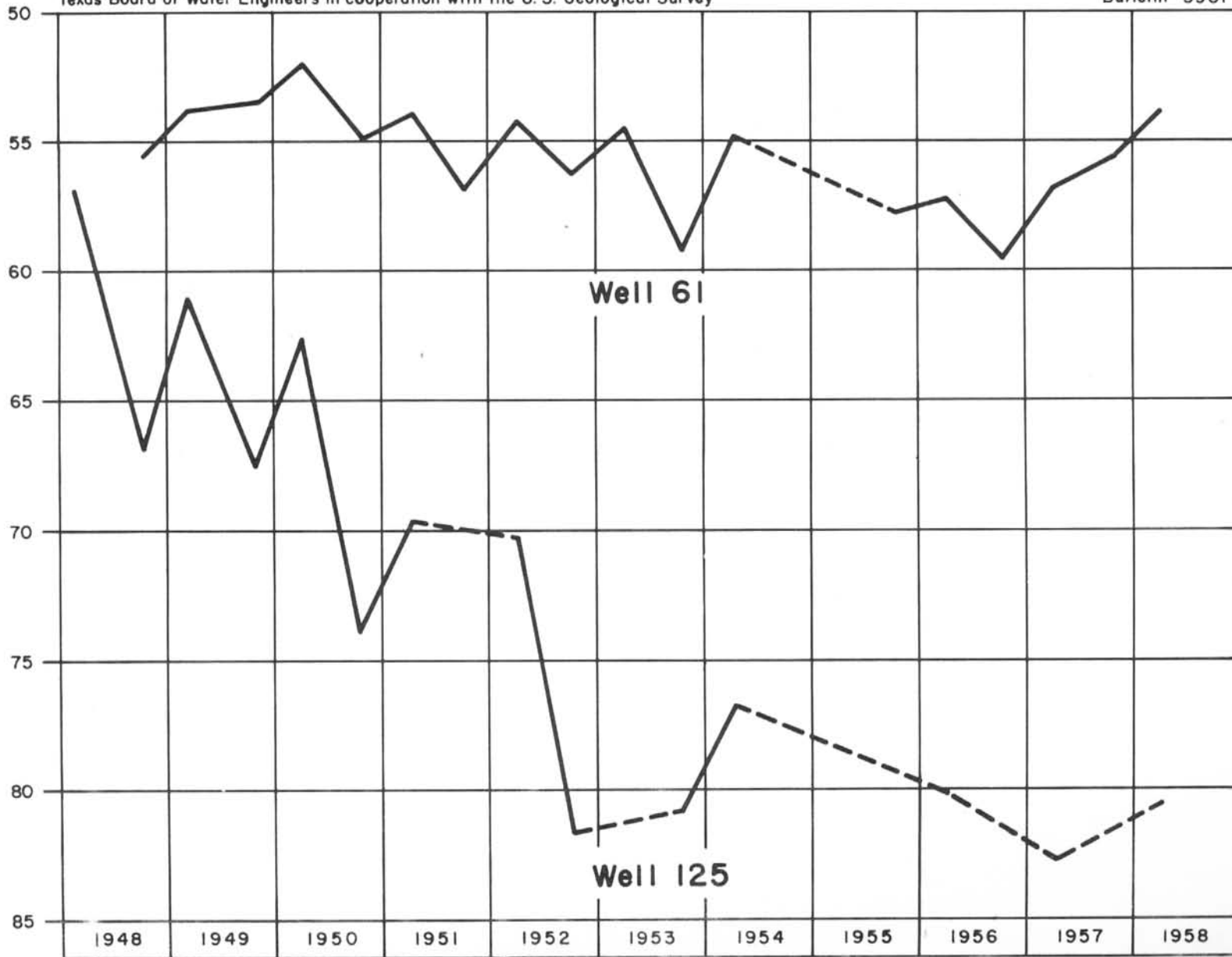
353. Lat. $30^{\circ}04'$, long. $94^{\circ}47'$.

Mar. 16, 1949	13.60	Apr. 9, 1952	25.88	Apr. 12, 1954	36.30
Oct. 19, 1950	25.45	Oct. 6	37.40		
Oct. 12, 1951	33.50	Apr. 7, 1953	32.31		

c Nearby well being pumped.

+ Indicates water level, in well, above land-surface datum.

Water level in feet below land-surface datum

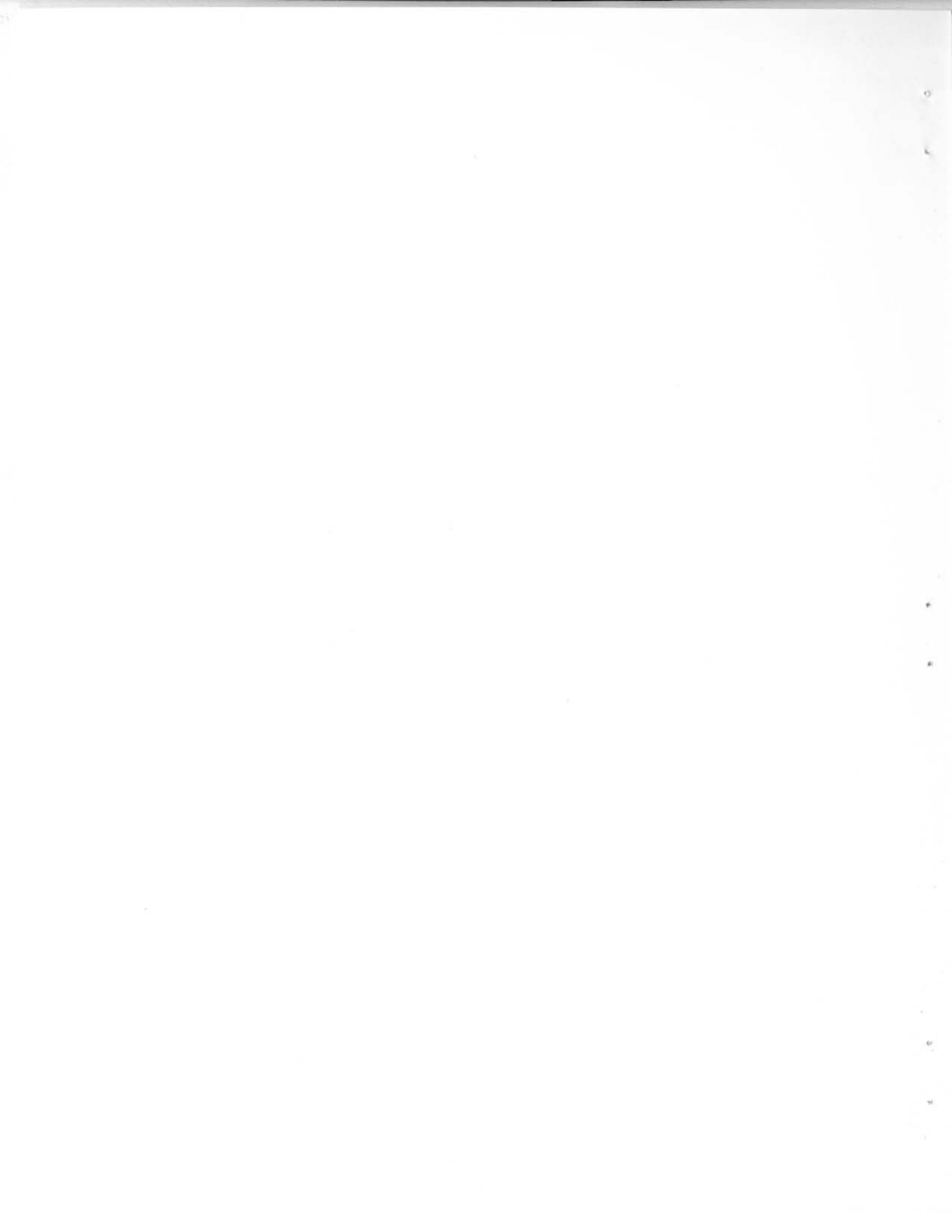


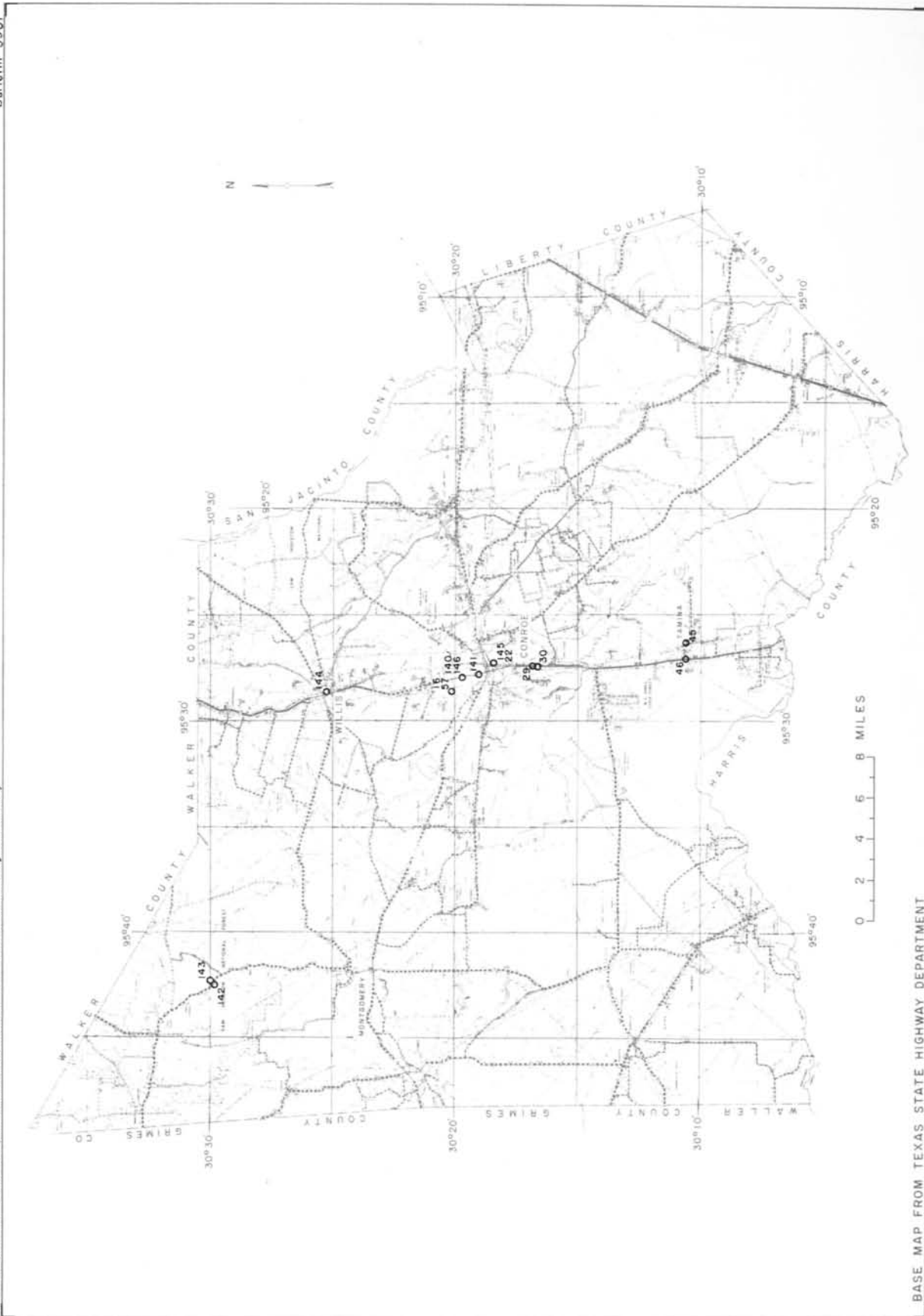
HYDROGRAPHS OF WATER LEVELS IN WELLS 61 AND 125,
LIBERTY COUNTY, TEXAS

Dec. 1958 - F.L.O.



MONTGOMERY COUNTY





BASE MAP FROM TEXAS STATE HIGHWAY DEPARTMENT



WATER-LEVEL MEASUREMENTS IN MONTGOMERY COUNTY, TEXAS

16. Lat. 30°20', long. 95°28'. Diameter 6 inches, depth 50 feet.

Date	Water level	Date	Water level	Date	Water level
Nov. 13, 1931	16.00	Feb. 15, 1932	9.27	July 25, 1932	14.60
25	15.98	22	2.26	Aug. 31	15.50
Dec. 2	15.46	Mar. 7	5.59	Sept. 27	12.78
9	12.90	14	7.19	Oct. 21	16.43
15	11.38	21	8.66	Feb. 7, 1938	31.71
22	9.79	28	9.90	May 13	30.80
29	10.70	Apr. 4	9.84	Oct. 26	43.84
Jan. 5, 1932	5.42	11	11.06	Dec. 17	43.39
12	2.18	18	11.10	Jan. 26, 1939	43.96
19	6.41	25	11.25	May 24	43.84
28	4.78	May 2	11.62	Aug. 3	44.70
Feb. 2	7.50	9	11.95		
9	8.78	16	11.75		

22. Lat. 30°18', long. 95°27'. Diameter 8 inches, depth 1,464 feet, screened from 1, 125 to 1,272 feet.

June 3, 1931 +	0.62	Aug. 26, 1943	0.75	Sept. 28, 1949	1.79
Aug. 12	3.73	Jan. 28, 1944 +	0.66	Dec. 19	2.06
Nov. 18	0.05	May 29	+ 1.08	Feb. 14, 1950	1.16
June 15, 1939	2.67	Sept. 18	4.65	June 20	1.23
Aug. 3	1.78	Dec. 13	0.26	Sept. 26	3.22
Sept. 25	7.69	Jan. 24, 1945	0.05	Dec. 7	6.55
Dec. 19	1.65	Mar. 26	1.62	Mar. 5, 1951	4.73
Feb. 15, 1940	1.32	June 15	6.50	June 19	11.53
May 1	0.94	Jan. 11, 1946	3.95	Sept. 20	10.24
June 28	2.30	May 27	1.33	Dec. 11	8.42
Aug. 21	11.83	July 10	10.57	Feb. 11, 1952	3.89
Dec. 5	0.40	Sept. 20	4.30	June 23	10.79
Feb. 26, 1941	0.09	Dec. 6	6.88	Sept. 12	11.81
Apr. 8	+ 0.65	Jan. 31, 1947	5.87	Dec. 22	13.27
June 3	+ 0.99	Mar. 17	+ 0.51	Feb. 2, 1953	11.78
July 3, 1941 +	0.50	June 4	0.64	June 22	19.74
Sept. 3	1.35	Sept. 18	2.63	Oct. 2	19.07
Nov. 4	+ 0.44	Dec. 18	0.98	Dec. 9	11.72
Dec. 16	+ 0.77	Feb. 18, 1948	0.72	Feb. 16, 1954	12.29
Jan. 22, 1942 +	0.25	June 16	0.58	June 14	14.86
May 7	+ 0.79	Sept. 28	11.11	Sept. 28	21.26
June 24	+ 0.90	Dec. 16	3.40	Dec. 14	16.40
Jan. 20, 1943 +	1.07	Feb. 14, 1949	2.44	Feb. 4, 1955	23.82
June 21	0.80	June 15	2.39		

WATER-LEVEL MEASUREMENTS IN MONTGOMERY COUNTY--CONTINUED

29. Lat. 30°17', long. 95°27'. Diameter 48 inches, depth 30 feet, cribbed with brick to 8 feet. Recorder established Aug. 2, 1952.

Date	Water level	Date	Water level	Date	Water level
Nov. 18, 1931	24.45	Dec. 19, 1939	25.30	Feb. 18, 1948	21.65
25	24.43	Feb. 15, 1940	25.04	June 16	22.52
Dec. 2	24.48	May 1	24.76	Sept. 28	24.01
9	23.15	June 28	24.26	Dec. 16	24.87
22	20.94	Aug. 25	24.52	Feb. 14, 1949	24.92
29	20.78	Oct. 4	25.10	June 15	22.12
Jan. 12, 1932	18.54	Dec. 5	24.00	Sept. 28	23.63
19	18.70	Jan. 27, 1941	21.25	Dec. 19	18.79
28	16.78	Feb. 26	20.60	Feb. 14, 1950	15.83
Feb. 9	17.53	Apr. 8	19.05	June 20	14.52
15	17.82	June 3	17.93	Sept. 26	21.28
29	15.98	July 3	17.00	Dec. 7	23.16
Mar. 7	15.45	Sept. 3	19.88	Mar. 5, 1951	24.18
14	16.29	19	20.53	June 19	24.54
28	17.76	Nov. 4	13.96	Sept. 20	25.25
Apr. 11	18.70	Dec. 16	15.71	Dec. 11	25.72
18	18.84	Jan. 22, 1942	17.06	Feb. 11, 1952	26.30
25	19.31	May 7	14.26	June 23	24.40
May 9	20.78	July 29	15.37	30	24.39
16	20.86	Sept. 18	15.90	July 31	24.83
July 1	22.15	Jan. 20, 1943	15.23	Aug. 10	24.88
Sept. 27	23.90	Mar. 28	16.81	20	25.03
Oct. 21	24.65	June 21	18.85	31	25.15
Nov. 26	24.82	Aug. 26	19.63	Sept. 10	25.26
Dec. 30	24.64	Jan. 28, 1944	19.84	20	25.40
Jan. 25, 1933	24.79	May 29	15.38	Oct. 31	25.85
Mar. 15	21.00	July 21	18.55	Nov. 10	25.87
May 8	22.87	Sept. 18	21.21	20	26.00
Nov. 24, 1934	25.86	Dec. 13	20.00	29	25.99
May 29, 1935	16.00	Jan. 24, 1945	16.48	Dec. 9	25.99
Aug. 21	21.60	Mar. 26	16.38	22	25.95
Feb. 27, 1936	20.75	June 15	15.46	31	25.81
Feb. 7, 1938	22.31	Jan. 11, 1946	20.90	Jan. 10, 1953	25.72
May 13	22.64	May 27	15.51	20	25.61
Oct. 26	24.25	July 10	14.71	31	25.57
Nov. 18	24.48	Sept. 20	19.48	Feb. 10	25.54
Dec. 17	24.80	Dec. 6	15.63	20	25.41
Jan. 26, 1939	22.48	Jan. 31, 1947	13.48	28	25.12
Mar. 4	21.61	Mar. 17	15.71	Mar. 6	25.23
May 24	23.35	June 4	16.24	20	24.78
Aug. 3	23.65	Sept. 18	21.67	31	24.68
Sept. 25	24.46	Dec. 18	22.25	Apr. 10	24.64

Continued

WATER-LEVEL MEASUREMENTS IN MONTGOMERY COUNTY--CONTINUED

29. Continued

Date	Water level	Date	Water level	Date	Water level
Apr. 20, 1953	24.71	Feb. 28, 1954	24.72	Jan. 20, 1955	25.91
30	24.29	Mar. 10,	24.66	31	25.66
May 10	23.67	18	24.77	Feb. 10	25.23
20	21.85	Apr. 10	25.08	18	25.03
31	21.69	20	25.16	Mar. 31	24.56
June 10	22.46	30	25.16	Apr. 10	24.67
20	22.74	May 10	25.28	20	24.72
30	23.22	20	25.33	30	24.86
July 10	23.40	31	25.41	May 10	24.92
20	23.60	June 20	25.55	20	24.92
31	23.86	30	25.64	31	25.06
Aug. 10	24.00	July 10	25.73	June 8	25.10
20	24.15	20	25.77	20	25.23
31	24.34	31	25.69	30	25.31
Sept. 10	24.41	Aug. 10	25.86	July 10	25.40
20	24.48	20	25.94	20	25.49
30	24.64	31	25.98	31	25.57
Oct. 10	24.77	Sept. 10	26.04	Aug. 10	25.65
20	24.93	20	26.10	20	25.76
31	25.05	30	26.12	31	25.83
Nov. 10	25.17	Oct. 10	26.22	Sept. 10	25.89
12	25.18	20	26.28	20	25.94
Dec. 9	25.39	31	26.25	30	26.00
20	25.28	Nov. 10	26.21	Oct. 10	26.07
31	25.22	20	26.19	20	26.14
Jan. 10, 1954	25.06	30	26.23	31	26.24
20	24.84	Dec. 10	26.29	Nov. 10	26.29
31	24.78	20	26.32	23	26.32
Feb. 10	24.58	31	26.25	Dec. 3	26.32
20	24.70	Jan. 10, 1955	26.10		

30. Lat. $30^{\circ}16'$, long. $95^{\circ}27'$. Diameter 48 inches, depth 33 feet.

June 3, 1931	26.20	Nov. 26, 1932	27.48	Mar. 4, 1939	26.72
Aug. 12	24.30	Dec. 30	26.91	May 24	28.56
Nov. 25	25.77	Jan. 25, 1933	29.80	Aug. 3	28.98
Dec. 15	23.68	Mar. 15	25.84	Sept. 25	29.56
Jan. 19, 1932	20.70	Aug. 21, 1935	26.45	Dec. 19	30.40
Feb. 29	17.93	Feb. 27, 1936	25.84	Feb. 15, 1940	30.39
Mar. 21	18.50	Feb. 7, 1938	27.22	May 1	29.90
Apr. 25	19.64	May 13	27.45	June 28	29.52
May 21	21.88	Oct. 26	28.98	Aug. 25	29.94
July 25	24.34	Nov. 18	29.21	Oct. 4	30.25
Sept. 27	25.68	Dec. 17	29.50		
Oct. 21	27.12	Jan. 26, 1939	28.36		

WATER-LEVEL MEASUREMENTS IN MONTGOMERY COUNTY--CONTINUED

45. Lat. 30°10', long. 95°26'. Diameter 24 inches, depth 30 feet.

Date	Water level	Date	Water level	Date	Water level
Nov. 18, 1931	16.20	Oct. 4, 1940	24.40	Dec. 6, 1946	12.26
Dec. 15	15.98	Dec. 5	22.15	Jan. 31, 1947	10.73
Jan. 19, 1932	16.21	Jan. 27, 1941	23.30	Mar. 17	10.50
Mar. 21	16.28	Feb. 26	21.86	June 4	11.24
May 21	15.60	Apr. 8	23.32	Sept. 18	13.16
July 1	15.82	June 3	23.81	Dec. 18	13.45
Aug. 31	16.04	July 3	24.38	Feb. 18, 1948	13.05
Sept. 27	21.18	Sept. 3	23.20	June 16	20.71
Nov. 26	21.60	Nov. 4	20.59	Sept. 28	14.10
Dec. 30	21.20	Dec. 16	21.10	Dec. 16	15.36
Jan. 25, 1933	21.74	Jan. 22, 1942	20.78	Feb. 14, 1949	14.82
Nov. 29, 1934	23.71	May 7	21.60	June 15	14.98
May 29, 1935	24.08	July 29	19.02	Sept. 28	14.91
Aug. 21	26.78	Sept. 18	19.23	Dec. 19	13.93
Feb. 27, 1936	22.34	Jan. 20, 1943	17.16	Feb. 14, 1950	12.88
Feb. 6, 1938	21.56	Mar. 28	18.43	June 20	16.28
May 13	21.70	June 21	21.46	Sept. 26	17.39
Oct. 26	24.13	Aug. 26	20.63	Dec. 7	19.30
Nov. 18	24.17	Jan. 28, 1944	20.87	Mar. 5, 1951	16.09
Dec. 17	23.53	May 29	19.29	June 19	14.83
Jan. 26, 1939	22.27	July 21	20.98	Sept. 20	15.03
Mar. 4	22.01	Sept. 18	20.69	Dec. 11	15.40
May 24	22.56	Dec. 13	17.61	Feb. 11, 1952	15.33
Aug. 3	23.55	Jan. 23, 1945	16.75	June 23	14.20
Sept. 23	24.15	Mar. 26	16.93	30	14.24
Dec. 19	23.80	June 15	17.96	July 31	14.44
Feb. 15, 1940	23.40	Jan. 11, 1946	15.11	Sept. 12	14.97
May 1	24.02	May 27	14.63	Dec. 22	15.50
June 23	24.10	July 10	13.75	Feb. 2, 1953	15.72
Aug. 25	24.40	Sept. 20	14.18	June 22	14.33

46. Lat. 30°10', long. 95°27'. Diameter 24 inches, depth 35 feet, cased with concrete rings to 35 feet.

June 2, 1931	29.80	Aug. 31	30.08	Nov. 29, 1934	30.24
Aug. 12	29.43	Sept. 27	29.60	May 29, 1935	30.52
Dec. 15	29.38	Oct. 21	31.60	Aug. 21	30.87
Jan. 19, 1932	29.50	Nov. 26	29.97	Feb. 27, 1936	30.15
Feb. 29	29.28	Dec. 30	29.77	Aug. 13	28.91
Mar. 21	28.91	Jan. 25, 1933	29.84	Feb. 6, 1938	30.35
Apr. 25	29.67	Mar. 15	30.24	May 13	30.19
May 21	29.46	May 8	29.98	Oct. 26	32.30
July 1	30.57	June 24	31.44	Nov. 18	30.79

Continued

WATER-LEVEL MEASUREMENTS IN MONTGOMERY COUNTY--CONTINUED

46. Continued

Date	Water level	Date	Water level	Date	Water level
Dec. 17, 1938	30.73	May 29, 1944	29.30	Sept. 20, 1951	28.48
Jan. 26, 1939	29.90	July 21	29.73	Dec. 11	28.66
Mar. 4	29.73	Sept. 18	29.56	Feb. 11, 1952	28.52
May 24	31.01	Dec. 13	29.41	June 23	28.94
Aug. 3	30.92	Jan 24, 1945	28.98	30	28.88
Sept. 25	31.55	Mar. 26	29.16	July 31	28.83
Dec. 19	31.38	June 15	29.27	Sept. 12	29.03
Feb. 15, 1940	30.44	Jan. 11, 1946	28.52	Dec. 22	28.90
May 1	29.52	May 27	28.56	Feb. 2, 1953	29.15
June 28	31.64	July 10	28.65	June 22	29.33
Aug. 25	31.96	Sept. 20	28.96	Oct. 2	29.65
Oct. 4	31.78	Dec. 6	28.45	Dec. 9	29.43
Dec. 5	30.62	Jan. 31, 1947	28.04	Feb. 16, 1954	29.48
Jan. 27, 1941	30.68	Mar. 17	27.96	June 14	30.38
Feb. 26	28.90	June 4	27.92	Sept. 28	30.65
Apr. 8	31.30	Sept. 18	28.08	Dec. 14	27.87
June 3	30.97	Dec. 18	27.76	Feb. 4, 1955	29.93
July 3	31.45	Feb. 18, 1948	27.66	July 16	30.38
Aug. 15	31.75	June 16	28.14	Sept. 20	30.50
Sept. 19	31.05	Sept. 28	28.06	Dec. 21	30.29
Nov. 4	29.52	Dec. 16	27.98	Feb. 14, 1956	30.15
Dec. 16	30.97	Feb. 14, 1949	27.88	June 13	30.85
Jan. 22, 1942	31.37	June 15	28.23	Dec. 13	30.77
May 7	30.82	Sept. 28	28.23	Feb. 19, 1957	30.89
July 29	31.04	Dec. 19	27.76	June 13	30.92
Sept. 18	30.25	Feb. 14, 1950	27.46	Sept. 13	31.05
Jan. 20, 1943	30.29	June 20	27.66	Dec. 12	30.75
Mar. 28	29.96	Sept. 26	27.86	Feb. 20, 1958	30.49
June 21	30.12	Dec. 7	28.15	June 10	30.85
Aug. 26	30.35	Mar. 5, 1951	28.05		
Jan. 28, 1944	29.53	June 19	28.40		

57. Lat. 30°20', long. 95°28'. Diameter 36 inches, depth 48 feet, cased with concrete to 48 feet.

Oct. 3, 1940	44.40	Sept. 19, 1941	42.02	Mar. 28, 1943	39.53
Dec. 5	44.20	Nov. 4	40.67	June 21	39.53
Jan. 27, 1941	43.57	Dec. 16	40.45	Aug. 26	39.66
Feb. 26	43.35	Jan. 22, 1942	40.43	Jan. 28, 1944	40.52
Apr. 8	42.53	May 7	39.10	May 29	40.07
June 3	42.16	July 29	39.05	July 21	40.48
July 3	41.82	Sept. 18	38.72	Sept. 18	40.63
Aug. 15	41.93	Jan. 20, 1943	38.81	Dec. 13	40.94

Continued

WATER-LEVEL MEASUREMENTS IN MONTGOMERY COUNTY--CONTINUED

57. Continued

Date	Water level	Date	Water level	Date	Water level
Jan. 24, 1945	40.33	June 16, 1948	40.68	Feb. 11, 1952	43.32
Mar. 26	39.56	Sept. 28	41.27	June 23	43.97
June 15	39.16	Dec. 16	41.80	Sept. 12	44.14
Jan. 11, 1946	39.76	Feb. 14, 1949	41.92	Dec. 22	44.33
May 27	39.07	June 15	41.61	Feb. 2, 1953	44.53
July 10	39.02	Sept. 28	42.02	June 22	44.69
Sept. 20, 1946	39.78	Dec. 19	41.61	Oct. 2	44.92
Dec. 6	39.30	Feb. 14, 1950	40.86	Dec. 9	44.93
Jan. 31, 1947	37.79	June 20	39.78	Feb. 16, 1954	44.98
Mar. 17	38.09	Sept. 26	40.64	June 14	45.30
June 4	37.94	Dec. 7	41.38	Sept. 28	45.49
Sept. 18	39.11	June 19, 1951	42.32	Dec. 14	45.54
Dec. 18	39.92	Sept. 20	42.98	Feb. 7, 1955	45.34
Feb. 18, 1948	39.94	Dec. 11	43.34	June 16	45.74

140. Lat. 30°19', long. 95°27'. Diameter 1 inch, depth 21 feet, screened from 19 to 21 feet.

June 10, 1940	10.86	July 8, 1941	6.85	July 10, 1946	6.21
11	10.42	30	7.20	Sept. 20	9.00
12	10.20	Aug. 15	7.98	Dec. 6	5.43
13	9.99	Sept. 3	8.77	Jan. 31, 1947	4.71
15	9.88	19	9.26	Mar. 17	6.57
21	10.22	Nov. 4	5.48	June 4	6.49
26	10.54	Dec. 16	7.24	Sept. 18	9.91
July 1	10.20	Jan. 22, 1942	7.78	Dec. 18	8.93
16	9.05	July 29	6.28	Feb. 18, 1948	7.75
Aug. 21	11.12	Sept. 18	1.85	June 16	9.84
Oct. 4	12.13	Jan. 20, 1943	5.70	Feb. 14, 1949	10.48
Dec. 5	9.29	Mar. 28	7.23	June 15	9.59
Jan. 9, 1941	8.64	June 21	8.39	Sept. 28	11.19
18	8.48	Aug. 26	4.84	Dec. 19	7.19
24	8.32	Jan. 28, 1944	0.63	Feb. 14, 1950	6.46
31	8.54	June 3	5.92	June 20	6.69
Feb. 14	8.50	July 21	8.60	Sept. 26	10.33
22	8.45	Sept. 18	9.54	Dec. 7	11.45
27	8.19	Dec. 13	7.61	Mar. 5, 1951	11.57
Mar. 25	7.07	Jan. 24, 1945	6.05	June 19	11.75
May 13	6.45	Mar. 26	6.08	Sept. 20	12.59
27	7.70	June 15	6.88	Dec. 11	13.09
June 10	6.70	Jan. 11, 1946	7.07	Feb. 11, 1952	12.36
20	5.62	May 27	4.89	June 23	11.02

Continued

WATER-LEVEL MEASUREMENTS IN MONTGOMERY COUNTY--CONTINUED

140. Continued

Date	Water level	Date	Water level	Date	Water level
Sept. 12, 1952	12.56	Sept. 28, 1954	13.16	Sept. 21, 1956	13.47
Dec. 22	12.52	Dec. 14	11.91	Dec. 11	13.75
Feb. 2, 1953	13.17	Feb. 7, 1955	9.69	Feb. 19, 1957	13.67
June 22	10.53	June 16	11.33	June 13	11.30
Oct. 2	12.17	Sept. 20	12.61	Sept. 13	13.29
Dec. 9	12.59	Dec. 21	13.18	Dec. 12	10.90
Feb. 16, 1954	10.80	Feb. 14, 1956	10.85	Feb. 20, 1958	9.45
June 14	11.99	June 13	11.86	June	10.09

141. Lat. 30°18', long. 95°27'. Diameter 30 inches, depth 34 feet.

Nov. 18, 1938	32.36	Dec. 19, 1939	33.00	Jan. 27, 1941	30.20
Dec. 17	32.54	Feb. 15, 1940	32.80	Feb. 26, 1941	28.70
Jan. 26, 1939	32.43	May 1	33.10	Apr. 8	27.99
Mar. 4	31.74	June 28	32.20	June 3	27.42
May 24	31.61	Aug. 21	31.90	July 3	25.80
Aug. 3	32.15	Oct. 4	32.20		
Sept. 25	32.40	Dec. 5	31.50		

142. Lat. 30°29', long. 95°42'.

Dec. 22, 1952	55.87	June 14, 1954	56.19	Dec. 21, 1955	57.94
Feb. 2, 1953	55.99	Sept. 28	56.54	Feb. 14, 1956	57.37
June 22	55.98	Dec. 14	56.59	June 13	57.54
Oct. 2	56.18	Feb. 4, 1955	56.83	Sept. 21	59.91
Dec. 9	56.34	June 16	57.03		
Feb. 16, 1954	56.27	Sept. 20	57.26		

143. Lat. 30°29', long. 95°42'.

Dec. 30, 1952	48.17	Sept. 18, 1954	49.83	Sept. 21, 1956	51.04
Feb. 2, 1953	49.30	Dec. 14	49.92	Dec. 11	51.27
June 22	49.35	Feb. 4, 1955	49.47	Feb. 19, 1957	51.36
Oct. 2	49.53	June 16	50.18	June 13	51.42
Dec. 9	49.48	Sept. 20	50.41	Sept. 13	51.62
Feb. 16, 1954	49.45	Dec. 21	50.60	Feb. 20, 1958	51.51
June 16	49.37	Feb. 14, 1956	50.63	June 10	51.12

WATER-LEVEL MEASUREMENTS IN MONTGOMERY COUNTY--CONTINUED

144. Lat. 30°25', long. 95°28'. Diameter 11 to 4 inches, depth 380 feet, screened from 282 to 299 and 321 to 362 feet.

Date	Water level	Date	Water level	Date	Water level
Dec. 9, 1955	185.11	Feb. 19, 1957	186.71	Feb. 20, 1958	186.26
Feb. 14, 1956	185.00	June 13	186.33	June 10	186.25
Sept. 21	197.26	Sept. 13	187.18		
Dec. 11	187.07	Dec. 12	186.71		

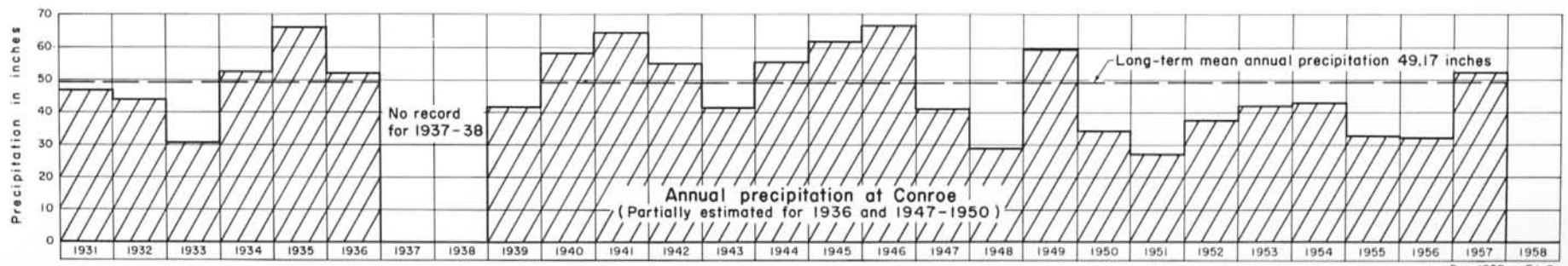
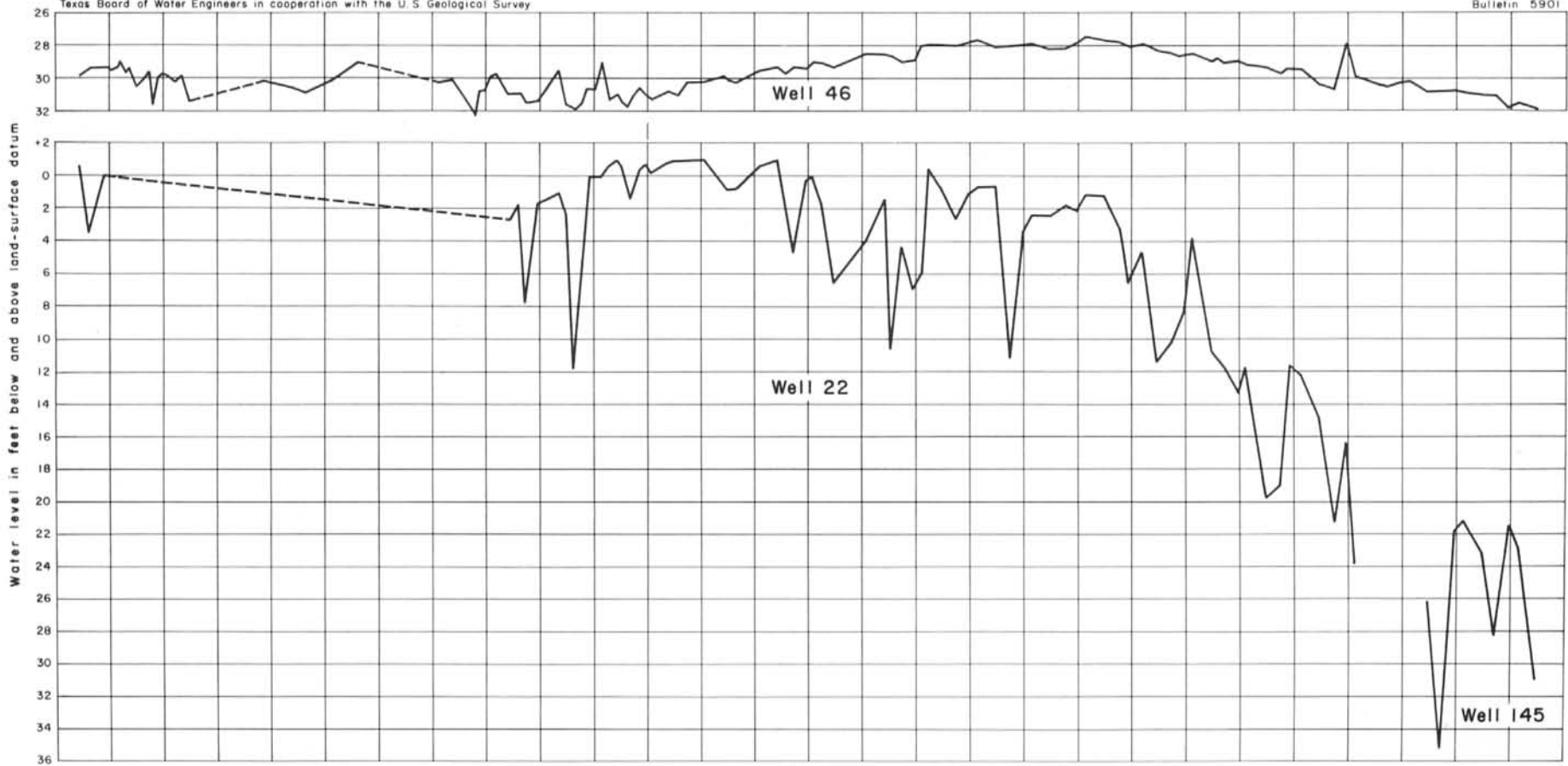
145. Lat. 30°18', long. 95°27'. Diameter 8 inches, depth 1,221 feet, screened from 1,099 to 1,163 and 1,185 to 1,221 feet.

June 13, 1956	26.16	Feb. 19, 1957	21.17	Dec. 12, 1957	21.49
Sept. 21	35.18	June 13	23.10	Feb. 20, 1958	22.86
Dec. 11	21.85	Sept. 13	28.20	June 10	30.90

146. Lat. 30°19', long. 95°27'.

June 19, 1951	12.33	Dec. 9, 1953	13.22	June 13, 1956	12.56
Sept. 20	13.12	Feb. 16, 1954	11.58	Sept. 21	14.03
Dec. 11	13.64	June 14	12.54	Dec. 11	14.29
Feb. 11, 1952	13.06	Sept. 28	13.23	Feb. 19, 1957	14.29
June 23	11.67	Dec. 14	12.76	June 13	12.53
Sept. 12	13.14	Feb. 7, 1955	10.26	Sept. 13	13.83
Dec. 22	13.31	June 16	12.02	Dec. 12	11.79
Feb. 2, 1953	12.86	Sept. 20	13.22	Feb. 20, 1958	10.38
June 22	11.22	Dec. 21	13.79	June 10	10.82
Oct. 2	12.79	Feb. 14, 1956	11.88		

+ Indicates water level, in well, above land-surface datum.



HYDROGRAPHS OF WATER LEVELS IN WELLS 46, 22, AND 145, MONTGOMERY COUNTY, AND ANNUAL PRECIPITATION AT CONROE, TEXAS

Dec 1958 - F.L.O

