

TEXAS BOARD OF WATER ENGINEERS

R. M. Dixon, Chairman

H. A. Beckwith, Member

O. F. Dent, Member

BULLETIN 5617

RECORDS OF WATER-LEVEL MEASUREMENTS IN  
DIMMIT, MAVERICK, AND ZAVALA COUNTIES, TEXAS  
1920, 1928 TO SEPTEMBER 1956

Compiled by

C. R. Follett, Engineer

Texas Board of Water Engineers

From records of the Texas Board of Water Engineers  
and the  
Geological Survey, United States Department of the Interior

December 1956



## C O N T E N T S

	Page
Introduction -----	1
Bibliography -----	2
Water-level measurements in Dimmit County -----	6
Water-level measurements in Maverick County -----	41
Water-level measurements in Zavala County -----	44

## ILLUSTRATIONS

Map showing location of observation wells in Dimmit County, Tex. -----	5
Hydrographs of water level in well O7-3, Dimmit County, and annual precipitation at Carrizo Springs, Tex. -----	37
Hydrographs of water level in wells S1-18 and N9-12 in Dimmit County, Tex. -----	38
Map showing location of observation wells in Maverick County, Tex. -----	40
Map showing location of observation wells in Zavala County, Tex. -----	43
Hydrographs of water level in wells H8-68 and N1-73 in Zavala County, Tex. -----	73
Hydrographs of water level in wells M6-19 and N5-40 in Zavala County, Tex. -----	74

SECTION 1

The first part of the document discusses the importance of maintaining accurate records of all transactions. It emphasizes that proper record-keeping is essential for the integrity of the financial system and for the ability to detect and prevent fraud. The text also mentions the need for regular audits and the role of independent auditors in ensuring the reliability of the financial statements.

SECTION 2

The second part of the document focuses on the internal controls and procedures that should be implemented to minimize the risk of errors and fraud. It outlines the responsibilities of various departments and individuals within the organization, as well as the need for a strong corporate culture that promotes ethical behavior and transparency. The text also discusses the importance of training and education for all employees.

The third part of the document addresses the issue of information technology and its impact on the financial system. It highlights the need for robust IT systems that can handle large volumes of data and provide real-time access to financial information. The text also discusses the risks associated with IT, such as data breaches and system downtime, and the need for a comprehensive IT security strategy.

The final part of the document provides a summary of the key points discussed and offers recommendations for further action. It stresses the importance of ongoing monitoring and evaluation of the financial system and the need for continuous improvement. The text concludes by emphasizing the role of leadership in setting the tone for the organization's financial practices.



RECORDS OF WATER-LEVEL MEASUREMENTS IN DIMMIT,

MAVERICK, AND ZAVALA COUNTIES, TEXAS

1920, 1928 through September 1956

Compiled by

C. R. Follett, Engineer

Texas Board of Water Engineers

December, 1956

INTRODUCTION

Periodic measurements of water levels are made in the principal ground-water reservoirs of the state to evaluate effects of ground-water development in relation to available supply. This work is done through an observation well program financed cooperatively by the Texas Board of Water Engineers and the United States Geological Survey.

Records of water levels in some observation wells are published annually in Water-Supply Papers of the Geological Survey. County water-level reports are published periodically by the Texas Board of Water Engineers in cooperation with the Geological Survey. These reports include records of water levels in selected observation wells. This bulletin contains records of measurements of the water levels in feet below land-surface datum in 83 wells in Dimmit County, 5 wells in Maverick County, and 108 wells in Zavala County. The records cover the years 1920 and 1928-56.

In 1929-30 an inventory of water wells in Dimmit, Zavala, and part of Maverick County was made cooperatively by the Geological Survey and the Texas Board of Water Engineers. Further studies were made in 1938-39 and in 1947-48. The data collected were published in 1931, 1940 and 1952. Measurements made during the investigations, as well as interim measurements, are included in this bulletin.

The accompanying maps show the locations of the observation wells. The well numbers on the map correspond to those in the table of measurements.

Graphs showing the fluctuation of water levels in three wells in Dimmit County and four wells in Zavala County, and the annual precipitation at Carrizo Springs, are given on pages 37, 38, 73, and 74. Records of water wells, geologic data, pumpage data, data on irrigated acreage, and discussion of ground water conditions may be found in the publications listed in the bibliography.

## BIBLIOGRAPHY

- BROADHURST, W. L., SUNDSTROM, R. W., and ROWLEY, J. H., 1950, Public water supplies in southern Texas: U. S. Geol. Survey Water-Supply Paper 1070.
- LIVINGSTON, P. P., 1947, Relationship of ground water to the discharge of the Leona River in Uvalde and Zavala Counties, Texas: Texas Board of Water Engineers duplicate report.\*
- MEINZER, O. E., and WENZEL, L. K., 1936, Water levels and artesian pressures in observation wells in the United States in 1935: U. S. Geol. Survey Water-Supply Paper 777.\*
- \_\_\_\_\_, 1938, Water levels and artesian pressures in observation wells in the United States in 1937: U. S. Geol. Survey Water-Supply Paper 840.\*
- \_\_\_\_\_, 1939, Water levels and artesian pressures in observation wells in the United States in 1938: U. S. Geol. Survey Water-Supply Paper 845.\*
- \_\_\_\_\_, 1940, Water levels and artesian pressures in observation wells in the United States in 1939: U. S. Geol. Survey Water-Supply Paper 886.\*
- \_\_\_\_\_, 1941, Water levels and artesian pressures in observation wells in the United States in 1940, pt. 4: U. S. Geol. Survey Water-Supply Paper 909.\*
- \_\_\_\_\_, 1943, Water levels and artesian pressures in observation wells in the United States in 1941, pt. 4: U. S. Geol. Survey Water-Supply Paper 939.\*
- \_\_\_\_\_, 1944, Water levels and artesian pressures in observation wells in the United States in 1942, pt. 4: U. S. Geol. Survey Water-Supply Paper 947.\*
- \_\_\_\_\_, 1946, Water levels and artesian pressures in observation wells in the United States in 1943, pt. 4: U. S. Geol. Survey Water-Supply Paper 989.\*
- OUTLAW, D. E., and OTHERS, 1952, Winter Garden district, Dimmit and Zavala Counties and eastern Maverick County, Texas: Texas Board of Water Engineers Bull. 5203.
- SAYRE, A. N., and OTHERS, 1947, Water levels and artesian pressures in observation wells in the United States in 1944, pt. 4: U. S. Geol. Survey Water-Supply Paper 1019.\*

## BIBLIOGRAPHY

- SAYRE, A. N., and OTHERS, 1948, Water levels and artesian pressures in observation wells in the United States in 1945, pt. 4: U. S. Geol. Survey Water-Supply Paper 1026.\*
- \_\_\_\_\_, 1949, Water levels and artesian pressures in observation wells in the United States in 1946, pt. 4: U. S. Geol. Survey Water-Supply Paper 1074.\*
- \_\_\_\_\_, 1950, Water levels and artesian pressures in observation wells in the United States in 1947, pt. 4: U. S. Geol. Survey Water-Supply Paper 1099.
- \_\_\_\_\_, 1951, Water levels and artesian pressures in observation wells in the United States in 1948, pt. 4: U. S. Geol. Survey Water-Supply Paper 1129.
- \_\_\_\_\_, 1951, Water levels and artesian pressures in observation wells in the United States in 1949, pt. 4: U. S. Geol. Survey Water-Supply Paper 1159.
- SAYRE, A. N., 1952, Water levels and artesian pressures in observation wells in the United States in 1950, pt. 4: U. S. Geol. Survey Water-Supply paper 1168.
- SAYRE, A. N., 1954, Water levels and artesian pressure in observation wells in the United States in 1951, pt. 4; U. S. Geol. Survey Water-Supply Paper 1194.
- SAYRE, A. N., 1954, Water levels and artesian pressures in observation wells in the United States in 1952, pt. 4: U. S. Geol. Survey Water-Supply Paper 1224.
- \_\_\_\_\_, 1955, Water levels and artesian pressures in observation wells in the United States in 1953, pt. 4: U. S. Geol. Survey Water-Supply Paper 1268.
- \_\_\_\_\_, 1956, Water levels and artesian pressures in observation wells in the United States in 1954, pt. 4: U. S. Geol. Survey Water-Supply Paper 1324.
- TURNER, S. F., and ROBINSON, R. W., 1931, Ground water in the Winter Garden and adjacent districts in southwestern Texas: Texas Board of Water Engineers duplicate report.\*
- TURNER, S. F., ROBINSON, T. W., and CROMACK, G. H., 1940, Records of wells, drillers' logs, water analyses, and maps showing location of wells in Winter Garden district in Dimmit and Zavala Counties and eastern Maverick County, Texas: Texas Board of Water Engineers duplicate report.
- \* Out of print. Copies are available for reference in some public libraries and at the Austin offices of the Texas Board of Water Engineers and the U. S. Geological Survey.



D I M M I T C O U N T Y

01111111 0001

01111111 0001



## WATER-LEVEL MEASUREMENTS IN DIMMIT COUNTY, TEX.

Date	Water level	Date	Water level	Date	Water level
------	-------------	------	-------------	------	-------------

M-9-9. Lat. 28°37', long. 100°00'. Diameter 10 inches. Land-surface datum is 688.7 feet above msl.

Dec. 12, 1929	75.10	Mar. 17, 1932	76.40	Aug. 7, 1942	85.83
Feb. 19, 1930	75.15	July 6,	76.49	Aug. 9, 1943	85.84
Aug. 26	75.50	Aug. 29	76.38	July 23, 1945	85.55
Feb. 6, 1931	75.55	Dec. 21	76.62	July 12, 1946	87.34
Mar. 4	75.60	Mar. 22, 1933	76.75	July 23, 1947	87.60
Apr. 25	75.60	Mar. 13, 1935	77.85	Sept. 16, 1948	87.48
June 9	75.75	Aug. 26, 1936	78.30	Aug. 11, 1949	a106.5
July 3	75.85	July 14, 1937	78.44	Aug. 16, 1950	a110.9
Aug. 5	75.80	Aug. 15	78.52	Sept. 12, 1951	a110.5
Oct. 2	75.90	Jan. 11, 1938	79.56	Aug. 20, 1952	a113.2
Nov. 6	76.00	Aug. 24	84.43	Sept. 10, 1953	90.30
Dec. 4	76.05	Apr. 6, 1939	83.34	Oct. 6, 1954	91.48
Jan. 7, 1932	76.15	Aug. 14	82.30	Sept. 21, 1955	97.40
Feb. 11	76.35	Aug. 3, 1941	83.31	Sept. 20, 1956	90.60

N-7-21. Lat. 28°38', long. 99°57'. Depth 425 feet, cased to 280, diameter 10 inches. Land-surface datum is 649.7 feet above msl.

Oct. 29, 1929	66.20	Aug. 26, 1930	68.90	Dec. 4, 1931	70.60
Nov. 22	67.10	Sept. 24	69.25	Jan. 7, 1932	70.15
Dec. 4	67.40	Dec. 18	67.55	Feb. 11	70.90
Dec. 18	68.15	Feb. 6, 1931	68.05	Mar. 18	70.60
Jan. 16, 1930	68.70	Mar. 4	67.40	July 6	71.15
Feb. 19	70.35	Apr. 25	68.65	Aug. 29	70.80
Mar. 10	72.05	June 8	67.00	Dec. 22	71.23
Apr. 16	72.00	Oct. 2	66.05	Mar. 18, 1933	69.55
May 19	71.75	Nov. 6	68.30	Aug. 27, 1934	77.15
July 15	69.30				

N-7-25. Lat. 28°37', long. 99°56'. Depth 350 feet, diameter 6 inches.

May 14, 1930	52.30	Aug. 24, 1938	54.12	Aug. 2, 1940	52.77
July 14, 1937	52.13	Apr. 6, 1939	63.09	Aug. 3, 1941	53.36
Aug. 15	55.60	July 19	56.52	Aug. 7, 1942	56.91
Jan. 11, 1938	53.20	Aug. 13	55.82		

a pumping



## WATER-LEVEL MEASUREMENTS IN DIMMIT COUNTY--CONTINUED

Date	Water level	Date	Water level	Date	Water level
------	-------------	------	-------------	------	-------------

N-7-27. Lat. 28°36', long. 99°55'. Depth 472 feet, diameter 10 inches.  
Land-surface datum is 634.6 feet above msl.

Oct. 28, 1929	58.05	May 19, 1930	64.95	June 8, 1931	62.80
Nov. 22	76.65	June 16	60.65	Dec. 4	69.20
Dec. 18	69.70	July 15	60.15	Mar. 18, 1932	70.15
Jan. 16, 1930	72.00	Sept. 25	69.40	Mar. 18, 1933	68.30
Feb. 19	74.85	Apr. 25, 1931	61.70	Sept. 21	67.65
Mar. 17	71.15				

N-7-34. Lat. 28°38', long 99°31'. Diameter 8 inches. Land-surface datum is 576.0 feet above msl.

Dec. 7, 1929	50.70	Dec. 1, 1931	56.65	July 15, 1939	48.46
Feb. 5, 1930	64.60	Jan. 4, 1932	45.85	Aug. 16	44.84
Apr. 18	60.15	Feb. 2	46.55	July 31, 1940	34.13
May 24	50.70	Mar. 17	44.15	Aug. 2, 1941	34.70
June 21	46.80	May 5	45.00	Aug. 8, 1942	47.23
July 26	45.20	July 5	41.70	Aug. 12, 1943	60.45
Aug. 20	47.10	Aug. 26	41.70	Dec. 19	58.44
Sept. 25	50.50	Dec. 19	45.05	July 9, 1944	55.65
Oct. 30	49.40	Mar. 17, 1933	40.15	July 21, 1945	62.81
Dec. 9	45.70	Sept. 15	35.90	July 12, 1946	64.53
Jan. 8, 1931	51.60	Aug. 29, 1934	41.85	July 23, 1947	55.85
Feb. 4	44.00	July 28, 1935	44.25	May 14, 1948	57.24
Mar. 2	37.80	Jan. 24, 1936	58.95	Aug. 10	58.19
Apr. 23	44.90	Aug. 24	46.75	Sept. 14	58.92
May 23	35.80	July 12, 1937	44.54	Aug. 10, 1949	62.61
June 24	35.50	Aug. 15	45.96	Aug. 16, 1950	65.23
July 24	28.65	Jan. 11, 1938	45.81	Sept. 12, 1951	74.58
Sept. 28	33.35	Aug. 18	40.72	Aug. 21, 1952	76.04
Nov. 3	50.60	Apr. 7, 1939	69.62	Sept. 10, 1953	88.64

N-7-39. Lat. 28°35', long. 99°56'. Depth 115 feet, diameter 6 inches.

Dec. 19, 1929	82.2	Sept. 11, 1953	114.68	Sept. 19, 1955	116.63
Aug. 21, 1952	113.62	Oct. 5, 1954	115.93	Sept. 18, 1956	117.73



## WATER-LEVEL MEASUREMENTS IN DIMMIT COUNTY--CONTINUED

Date	Water level	Date	Water level	Date	Water level
------	-------------	------	-------------	------	-------------

N-7-48. Lat. 28°37', long. 99°50'. Depth 1,001 feet, diameter 15 to 8 inches. Land-surface datum is 569.3 feet above msl.

Oct. 9, 1929	61.00	Sept. 28, 1931	29.50	Aug. 24, 1936	47.55
Nov. 22	72.65	Nov. 2	68.30	July 12, 1937	44.53
Dec. 18	79.60	Dec. 1	97.40	Aug. 16	45.17
Jan. 21, 1930	76.90	Jan. 4, 1932	66.75	Jan. 11, 1938	47.83
May 24	68.20	Feb. 2	73.20	Aug. 18	42.25
June 27	51.90	Mar. 17	59.10	Apr. 7, 1939	71.34
July 16	47.15	May 5	61.60	July 15	52.40
Dec. 9	52.30	July 5	44.20	Aug. 12	46.67
Jan. 8, 1931	68.60	Aug. 6	40.70	Aug. 1, 1940	32.19
Feb. 4	47.00	Mar. 17, 1933	42.00	Aug. 2, 1941	35.11
Apr. 23	48.40	Sept. 15	33.90	Aug. 8, 1942	49.83
May 23	33.85	Aug. 29, 1934	43.85	Aug. 11, 1943	67.73
June 24	32.15	July 28, 1935	45.40		
July 24	24.40	Jan. 24, 1936	60.38		

N-7-53. Lat. 28°34', long. 98°54'. Diameter 10 inches. Land-surface datum is 669.1 feet above msl.

Dec. 19, 1929	80.50	Dec. 11, 1930	81.75	Feb. 11, 1932	83.30
Jan. 16, 1930	79.90	Jan. 9, 1931	82.05	Mar. 18	84.25
Feb. 19	80.15	Feb. 6	81.45	June 30	84.14
Mar. 17	80.45	Mar. 4	81.60	Aug. 29	84.50
Apr. 16	81.00	Apr. 25	82.00	Dec. 22	84.75
May 19	81.40	July 3	82.60	Mar. 18, 1936	86.55
June 16	81.00	Oct. 2	84.80	Aug. 16, 1937	90.90
July 15	81.50	Nov. 6	83.35	Jan. 11, 1938	90.0
Aug. 26	84.90	Dec. 4	85.06	Aug. 23	88.4
Sept. 25	82.15	Jan. 7, 1932	83.30		

N-7-57. Lat. 28°34', long. 99°51'. Depth 705 feet, diameter 8 inches.

Oct. 3, 1930	67.7	Oct. 6, 1954	218.04	Sept. 17, 1956	264.97
Aug. 21, 1952	238.49	Sept. 21, 1955	233.51		

## WATER-LEVEL MEASUREMENTS IN DIMMIT COUNTY--CONTINUED

Date	Water level	Date	Water level	Date	Water level
------	-------------	------	-------------	------	-------------

N-7-66. Lat. 28°23', long. 99°53'. Depth 332 feet, diameter 12 inches.

Aug. 20, 1952	99.03	Oct. 5, 1954	111.93	Sept. 18, 1956	121.98
Sept. 10, 1953	105.88	Sept. 19, 1955	116.50		

N-7-67. Lat. 28°33', long. 99°53'. Depth 310 feet, diameter 10 inches.

Oct. 28, 1929	93.1	Sept. 19, 1955	128.44	Sept. 18, 1956	134.07
---------------	------	----------------	--------	----------------	--------

N-7-73. Lat. 38°30', long. 99°57'. Depth 40 feet, diameter 6 inches.  
Land-surface datum is 662.2 feet above msl.

Jan. 16, 1930	9.60	Apr. 25, 1931	8.60	Dec. 4, 1931	12.50
June 7	9.70	June 9	8.20	Jan. 7, 1932	8.80
Oct. 20	9.30	July 2	8.00	July 1	11.44

N-7-74. Lat. 28°31', long. 99°56'. Diameter 8 inches. Land-surface datum is 712.3 feet above msl.

Sept. 24, 1929	72.00	Aug. 26, 1930	79.95	Oct. 3, 1931	77.30
Nov. 22	78.10	Sept. 25	87.20	Dec. 4	71.30
Dec. 18	77.80	Oct. 20	72.90	Jan. 7, 1932	71.20
Jan. 16, 1930	72.65	Jan. 9, 1931	80.60	Mar. 19	71.35
Feb. 19	73.70	Feb. 7	79.90	July 1	71.34
Apr. 16	72.85	Mar. 4	74.60	Aug. 27	71.80
May 13	72.20	Apr. 25	71.75	Mar. 18, 1933	70.70
June 17	71.85	June 8	71.90	Sept. 21	70.60
July 15	72.10	July 2	71.85	Aug. 28, 1934	71.80

## WATER-LEVEL MEASUREMENTS IN DIMMIT COUNTY--CONTINUED

Date	Water level	Date	Water level	Date	Water level
------	-------------	------	-------------	------	-------------

N-7-78. Lat. 28°31', long. 99°52'. Depth 340 feet, diameter 10 inches.  
Land-surface datum is 675.0 feet above msl.

Jan. 6, 1930	91.70	Dec. 4, 1931	94.30	Aug. 13, 1939	103.92
Feb. 19	91.95	Jan. 7, 1932	94.30	Aug. 2, 1940	103.32
Mar. 17	92.00	Mar. 19	95.00	Aug. 3, 1941	105.52
June 17	92.40	June 30	95.85	Aug. 8, 1942	107.86
July 15	92.65	Aug. 28	96.47	Aug. 7, 1943	109.22
Aug. 26	92.80	Dec. 22	96.40	July 8, 1944	106.88
Sept. 25	92.90	Mar. 18, 1933	96.20	Aug. 14	108.13
Oct. 20	93.00	Sept. 20	97.10	July 23, 1945	107.90
Dec. 11	93.05	July 31, 1935	99.70	July 12, 1946	108.99
Jan. 9, 1931	93.90	Jan. 24, 1936	99.55	July 23, 1947	111.28
Feb. 6	93.15	July 14, 1937	101.36	Sept. 14, 1948	112.35
Apr. 25	93.70	Aug. 18	101.69	Aug. 11, 1949	111.32
June 8	93.70	Jan. 11, 1938	101.57	Aug. 21, 1952	115.6
July 2	94.00	Aug. 23	101.72	Oct. 5, 1954	119.12
Oct. 2	94.20	Apr. 5, 1939	103.62	Sept. 19, 1955	117.77
Nov. 6	94.70	July 19	103.61	Sept. 18, 1956	119.65

N-7-78b. Lat. 28°31', long. 99°52'. Depth 317 feet, diameter 10 inches.

Oct. 5, 1954	116.10	Sept. 19, 1955	118.31	Sept. 18, 1956	121.20
--------------	--------	----------------	--------	----------------	--------

N-7-95. Lat. 28°30', long. 99°54'. Depth 232 feet, diameter 10 inches.  
Land-surface datum 696.1 feet above msl.

Jan. 6, 1930	69.45	June 8, 1931	71.75	Aug. 18, 1937	72.32
Feb. 19	69.50	July 2,	72.20	Jan. 11, 1938	71.37
Mar. 17	69.60	Nov. 6	72.65	Aug. 23	74.28
Apr. 16	70.20	Dec. 4	74.10	Apr. 5, 1939	74.99
May 19	71.45	Jan. 7, 1932	73.10	July 14	74.51
June 17	70.25	Mar. 19	73.60	Aug. 13	74.48
July 15	69.40	July 1	79.75	Aug. 2, 1940	74.17
Aug. 26,	71.10	Aug. 27	78.80	Aug. 3, 1941	74.22
Sept. 25	71.05	Dec. 22	74.00	Aug. 8, 1942	74.70
Oct. 20	70.85	Mar. 18, 1933	74.15	Aug. 7, 1943	76.50
Dec. 11	69.35	Aug. 27, 1934	73.55	Dec. 19	75.14
Jan. 9, 1931	69.35	July 31, 1935	77.30	July 8, 1944	75.36
Feb. 7	68.20	Jan. 24, 1936	72.35	Aug. 14	75.49
Mar. 4	68.30	Aug. 26	73.20	July 23, 1945	76.32
Apr. 25	67.95	July 14, 1937	72.00	July 10, 1946	75.98

## WATER-LEVEL MEASUREMENTS IN DIMMIT COUNTY--CONTINUED

Date	Water level	Date	Water level	Date	Water level
------	-------------	------	-------------	------	-------------

N-7-97. Lat. 28°30', long. 99°53'. Depth 200 feet.

Sept. 14, 1948	82.00	Aug. 10, 1949	82.20		
----------------	-------	---------------	-------	--	--

N-7-125. Lat. 28°31', long. 99°51'. Depth 133 feet, diameter 6 inches.  
Land-surface datum is 612.5 feet above msl.

Feb. 26, 1930	57.50	Aug. 29, 1932	59.83	Aug. 3, 1941	66.82
Sept. 12	58.50	Dec. 22	58.78	Aug. 8, 1942	67.47
Feb. 6, 1931	58.30	Aug. 26, 1936	63.88	Aug. 7, 1943	68.05
Apr. 25	58.75	July 14, 1937	64.19	Dec. 19	68.23
June 8	58.35	Aug. 13	64.03	July 18, 1944	69.05
Oct. 3	58.60	Jan. 11, 1938	64.00	Aug. 14	69.24
Dec. 4	59.00	Aug. 23	64.78	July 23, 1945	69.52
Jan. 7, 1932	58.85	Apr. 5, 1939	65.57	July 9, 1946	69.39
Feb. 11	58.65	July 19	65.68	July 23, 1947	72.14
Mar. 19	59.55	Aug. 13	65.51	Sept. 14, 1948	71.79
July 1	60.08	Aug. 2, 1940	65.97	Aug. 10, 1949	71.80

N-7-127. Lat. 28°31', long. 99°51'. Depth 450 feet, diameter 6 inches,  
cased to 150. Land-surface datum is 580.8 feet above msl.

Oct. 8, 1929	58.10	Sept. 25, 1930	62.00	July 28, 1935	29.50
Nov. 22	62.40	Oct. 30	51.90	Jan. 24, 1936	32.74
Dec. 5	55.60	Dec. 9	52.60	Aug. 28	64.00
Dec. 19	53.40	Mar. 2, 1931	48.50	July 11, 1937	63.55
Jan. 21, 1930	55.85	May 23, 1931	45.80	Aug. 17	79.00
Feb. 20	64.15	July 24	43.30	Jan. 14, 1938	61.12
Mar. 24	59.35	Aug. 26, 1932	42.02	Aug. 17	32.64
Apr. 18	68.65	Dec. 19	31.23	Apr. 7, 1939	73.00
May 24	58.55	Mar. 17, 1933	32.20	July 15	64.44
June 21	51.95	Sept. 15	26.55	Aug. 12	64.85
July 9	53.15	Mar. 9, 1935	30.50	Dec. 10	65.50
Aug. 20	59.20				

## WATER-LEVEL MEASUREMENTS IN DIMMIT COUNTY--CONTINUED

Date	Water level	Date	Water level	Date	Water level
------	-------------	------	-------------	------	-------------

N-7-135. Lat. 28°30', long. 99°52'. Depth 106 feet, diameter 6 inches.  
Land-surface datum is 613.2 feet above msl.

Jan. 7, 1930	25.05	July 2, 1931	24.95	Jan. 11, 1938	29.60
Feb. 19	25.60	Oct. 3	25.05	Aug. 23	29.58
Mar. 17	25.35	Nov. 6	25.35	Apr. 5, 1939	31.09
Apr. 16	25.45	Dec. 4	25.30	July 17	30.82
May 19	25.20	Jan. 7, 1932	25.40	Aug. 12	31.03
June 16	24.90	Feb. 11	25.40	Dec. 9	31.03
July 15	25.10	Mar. 19	25.35	Aug. 2, 1940	31.40
Aug. 26	25.45	June 30	26.00	Aug. 3, 1941	31.78
Sept. 25	25.60	Aug. 19	25.73	Aug. 8, 1942	32.89
Oct. 20	25.60	Mar. 18, 1933	25.25	Aug. 6, 1943	33.21
Dec. 11	25.60	Sept. 20	26.10	Dec. 20	33.11
Jan. 9, 1931	25.45	Aug. 27, 1934	26.70	July 8, 1944	33.55
Feb. 7	25.25	Mar. 12, 1935	28.90	Aug. 11	33.65
Mar. 4	25.25	July 28	28.43	July 24, 1945	33.76
Apr. 25	25.40	Jan. 24, 1936	30.30	July 10, 1946	34.62
June 8	25.00				

N-7-136a. Lat. 28°30', long. 99°52'. Diameter 6 inches.

Sept. 14, 1948	64.56	Sept. 11, 1951	65.88	Oct. 5, 1954	65.50
Aug. 12, 1949	64.22	Aug. 20, 1952	66.17	Sept. 20, 1955	65.78
Aug. 16, 1950	68.2	Sept. 10, 1953	58.38	Sept. 19, 1956	68.71

N-7-138. Lat. 28°31', long. 99°50'. Diameter 6 inches. Land-surface datum is 579.0 feet above msl.

Oct. 24, 1929	49.75	Aug. 26, 1930	51.70	June 24, 1931	42.70
Dec. 17	50.15	Sept. 24	55.35	July 30	39.85
Jan. 17, 1930	50.65	Oct. 27	48.20	Sept. 30	43.80
Feb. 21	58.50	Dec. 9	46.10	Nov. 4	50.35
Mar. 18	58.40	Jan. 9, 1931	49.90	Dec. 2	49.20
Apr. 21	58.30	Feb. 5	43.55	Jan. 5, 1932	43.95
May 17	49.70	Mar. 6	43.55	Sept. 15, 1933	42.90
June 17	47.20	Apr. 29	44.30	Aug. 27, 1934	46.00
July 17	46.25	June 4	41.50		

## WATER-LEVEL MEASUREMENTS IN DIMMIT COUNTY--CONTINUED

Date	Water level	Date	Water level	Date	Water level
------	-------------	------	-------------	------	-------------

N-7-156. Lat. 28°31', long. 99°52'. Diameter 8 inches.

Oct. 5, 1954	126.23	Sept. 19, 1955	127.52	Sept. 18, 1956	130.12
--------------	--------	----------------	--------	----------------	--------

N-7-175a. Lat. 28°37', long. 99°58'. Depth 229 feet, diameter 12 inches.

Oct. 6, 1954	139.36	Sept. 21, 1955	146.88	Sept. 18, 1956	153.99
--------------	--------	----------------	--------	----------------	--------

N-7-175b. Lat. 28°37', long. 99°58'. Depth 240± feet, diameter 12 inches.

Oct. 6, 1954	148.65	Sept. 21, 1955	156.53	Sept. 18, 1956	163.57
--------------	--------	----------------	--------	----------------	--------

N-8-14. Lat. 28°38', long. 99°48'. Depth 1,137 feet, diameter 6 inches.  
Land-surface datum is 549.8 feet above msl.

Nov. 14, 1929	61.00	Aug. 20, 1930	47.45	July 24, 1931	18.25
Dec. 4	63.90	Sept. 25	57.50	Sept. 28	20.55
Dec. 19	65.70	Oct. 30	47.40	Nov. 3	60.70
Feb. 20, 1930	91.20	Jan. 8, 1931	65.35	Dec. 1	60.70
Mar. 25	85.50	Feb. 4	44.80	Jan. 4, 1932	53.70
Apr. 19	79.10	Mar. 2	34.95	Feb. 2	53.70
May 24	62.45	Apr. 23	39.90	Mar. 17	52.80
June 20	50.80	May 23	29.50	Aug. 26	33.55
July 9	48.15	June 24	23.70	Dec. 19	16.81

N-8-18. Lat. 28°38', long. 99°44'. Depth 1,210 feet, diameter 8 inches.

Oct. 13, 1954	298.6	Sept. 19, 1956	404.0		
---------------	-------	----------------	-------	--	--



## WATER-LEVEL MEASUREMENTS IN DIMMIT COUNTY--CONTINUED

Date	Water level	Date	Water level	Date	Water level
------	-------------	------	-------------	------	-------------

N-8-19. Lat. 28°35', long. 99°49'. Depth 800 feet, diameter 10 inches.  
Land-surface datum is 602.6 feet above msl.

Dec. 18, 1929	94.50	Aug. 15, 1931	56.75	July 19, 1939	82.70
Jan. 21, 1930	92.70	Sept. 28	61.48	Aug. 12	79.64
Feb. 20	106.20	Nov. 3	87.89	Aug. 1, 1940	69.33
Mar. 20	107.10	Dec. 1	102.80	Aug. 2, 1941	82.03
Apr. 18	111.20	Jan. 4, 1932	87.98	Aug. 8, 1942	83.42
May 24	93.80	Feb. 2	88.80	Aug. 12, 1943	85.03
June 27	80.00	Mar. 17	82.13	July 23, 1947	90.45
July 16	78.50	Apr. 13	92.45	Aug. 10, 1948	93.15
Aug. 20	82.05	May 5	87.06	Sept. 14	93.61
Sept. 25	89.75	May 27	81.40	Aug. 11, 1949	94.81
Oct. 30	78.00	July 5	79.00	Dec. 2	95.04
Dec. 9	77.00	Aug. 26	77.10	Aug. 16, 1950	96.04
Jan. 8, 1931	88.60	Dec. 19	87.01	Sept. 12, 1951	98.60
Feb. 4	75.35	Mar. 17, 1933	71.25	Aug. 21, 1952	102.0
Mar. 2	68.15	July 12, 1937	77.30	Sept. 10, 1953	104.86
Apr. 23	77.20	Aug. 16	80.15	Oct. 6, 1954	107.46
May 23	65.30	Jan. 11, 1938	78.52	Oct. 12	107.07
June 24	63.30	Aug. 18	75.99	Sept. 21, 1955	110.75
July 8	60.98	Apr. 7, 1939	91.39	Sept. 17, 1956	113.62
July 24	58.08				

N-8-23. Lat. 28°37', long. 99°47'. Diameter 8 inches. Land-surface datum is 558.6 feet above msl.

Nov. 15, 1929	69.65	Oct. 30, 1930	60.70	Dec. 1, 1931	107.50
Dec. 18	76.75	Dec. 9	60.15	Feb. 2, 1932	80.50
Jan. 21, 1930	80.30	Jan. 8, 1931	76.15	Mar. 17	65.40
Feb. 20	97.80	Feb. 4	57.25	May 5	66.20
Mar. 25	95.80	Mar. 2	57.20	Aug. 26	48.70
Apr. 19	85.40	Apr. 23	50.90	Dec. 19	72.11
May 24	75.40	May 23	41.70	Mar. 17, 1933	49.30
June 20	63.70	June 24	36.30	Sept. 15	38.40
July 17	58.10	July 24	31.35	Aug. 29	50.60
Aug. 20	59.25	Sept. 28	31.95	Mar. 6, 1935	100.52
Sept. 25	68.20	Nov. 3	68.60		

## WATER-LEVEL MEASUREMENTS IN DIMMIT COUNTY--CONTINUED

Date	Water level	Date	Water level	Date	Water level
------	-------------	------	-------------	------	-------------

N-8-26. Lat. 28°34', long. 99°47'. Depth 818 feet, diameter 8 inches.  
Land-surface datum is 548.8 feet above msl.

Nov. 18, 1929	62.95	July 24, 1931	33.20	Aug. 16, 1939	53.48
Dec. 19	70.40	Sept. 28	30.80	July 31, 1940	37.97
Jan. 21, 1930	73.40	Nov. 3	50.70	Aug. 2, 1941	39.38
Feb. 20	85.00	Dec. 1	82.20	Aug. 11, 1943	73.47
Mar. 25	93.75	Jan. 4, 1932	65.80	Dec. 19	79.23
Apr. 19	86.80	Feb. 2	65.80	July 8, 1944	66.84
May 24	76.50	Mar. 17	60.10	Aug. 11	74.55
July 17	60.10	Aug. 26	50.77	July 22, 1945	65.79
Aug. 20	59.90	Mar. 17, 1933	47.70	July 11, 1946	74.07
Sept. 25	67.55	Aug. 29, 1934	57.40	May 14, 1948	138.89
Oct. 30	63.60	Mar. 6, 1935	80.30	Aug. 10	130.15
Dec. 9	54.60	Aug. 23, 1936	51.60	Sept. 14	136.30
Jan. 8, 1931	64.45	July 11, 1937	47.45	June 16, 1949	115.58
Feb. 4	57.50	Aug. 17	48.54	Aug. 11	107.77
Mar. 2	48.70	Jan. 14, 1938	57.17	Aug. 16, 1950	139.96
Apr. 23	50.70	Aug. 17	47.13	Sept. 12, 1951	196.50
May 23	43.50	Apr. 9, 1939	66.21	Aug. 21, 1952	160.5
June 24	37.40	July 20	56.15		

N-8-28. Lat. 28°35', long. 99°47'. Depth 1,008 feet, diameter 6 inches.  
Land-surface datum is 547.0 feet above msl.

Nov. 18, 1929	63.30	Nov. 3, 1931	49.40	Apr. 9, 1939	66.41
Dec. 19	70.85	Dec. 1	81.30	July 20	55.02
Jan. 21, 1930	73.75	Jan. 4, 1932	66.00	Aug. 16	53.36
Feb. 20	85.50	Feb. 2	68.10	July 31, 1940	36.66
Apr. 19	86.55	Mar. 18	58.65	Aug. 2, 1941	37.84
May 24	76.70	May 5	69.40	Aug. 8, 1942	56.64
July 17	59.80	Aug. 26	49.45	Aug. 11, 1943	73.16
Aug. 20	60.05	Dec. 19	61.30	Dec. 19	79.65
Sept. 25	64.55	Mar. 17, 1933	45.05	July 8, 1944	66.01
Oct. 30	63.40	Sept. 15	45.25	Aug. 11	75.69
Dec. 9	54.35	Aug. 29, 1934	56.90	July 22, 1945	64.25
Jan. 8, 1931	64.85	Mar. 6, 1935	80.96	July 10, 1946	72.74
Feb. 4	57.10	July 31	54.30	July 23, 1947	88.35
Mar. 2	47.90	Jan. 25, 1936	54.62	May 14, 1948	134.95
Apr. 23	49.45	Aug. 28	50.12	Aug. 10	126.06
May 23	42.30	July 11, 1937	45.59	Sept. 13	131.61
June 24	35.30	Aug. 17	46.82	Aug. 11, 1949	106.63
July 24	30.85	Jan. 14, 1938	57.90	Aug. 16, 1950	139.35
Sept. 28	28.50	Aug. 17	45.75		



## WATER-LEVEL MEASUREMENTS IN DIMMIT COUNTY--CONTINUED

Date	Water level	Date	Water level	Date	Water level
------	-------------	------	-------------	------	-------------

N-8-29. Lat. 28°36', long. 99°47'. Depth 1,005 feet, diameter 12 inches.  
Land-surface datum is 553.4 feet above msl.

Nov. 15, 1929	66.20	Mar. 2, 1931	51.10	Mar. 17, 1933	50.20
Dec. 19	75.20	Apr. 23	52.40	Sept. 15	41.50
Jan. 21, 1930	78.20	May 23	45.60	Aug. 29, 1934	56.95
Feb. 20	91.10	June 24	39.25	July 30, 1935	55.55
Mar. 25	97.75	July 24	34.80	Jan. 25, 1936	58.80
Apr. 19	89.00	Sept. 28	33.80	Aug. 23	51.41
May 24	79.30	Nov. 3	57.85	July 11, 1937	47.75
June 20	68.70	Dec. 1	93.15	Aug. 17	47.68
July 17	62.00	Jan. 4, 1932	70.00	Jan. 14, 1938	57.99
Sept. 25	68.30	Feb. 2	75.35	Aug. 17	47.44
Oct. 30	65.65	Mar. 17	63.90	Apr. 7, 1939	67.05
Dec. 9	58.75	May 5	67.75	July 20	56.65
Jan. 9, 1931	70.65	Aug. 26	51.75	Aug. 16	53.07
Feb. 4	60.50	Dec. 19	68.45		

N-8-40. Lat. 28°32', long. 99°49'. Depth 380 feet, diameter 5 inches.  
Land-surface datum is 557.6 feet above msl.

Dec. 5, 1929	51.50	June 24, 1931	32.60	Jan. 11, 1938	32.25
Dec. 19	43.65	July 24	19.45	Aug. 17	57.30
Jan. 21, 1930	51.90	Sept. 28	37.70	Apr. 7, 1939	47.88
Feb. 20	75.70	Nov. 3	72.60	July 15	36.18
Mar. 24	58.90	Dec. 1	47.75	Aug. 12	34.89
Apr. 18	84.20	Jan. 4, 1932	32.80	Aug. 1, 1940	43.34
May 24	54.35	Feb. 2	42.05	Aug. 2, 1941	40.06
June 21	34.50	Mar. 17	35.75	Aug. 8, 1942	49.87
July 16	41.00	July 5	38.54	Aug. 11, 1943	79.13
Aug. 20	55.50	Aug. 26	46.95	Dec. 19	48.54
Sept. 25	68.00	Dec. 19	33.80	July 8, 1944	47.58
Oct. 30	31.70	Mar. 17, 1933	26.30	Aug. 11	78.34
Dec. 9	37.00	Sept. 15	45.45	July 24, 1945	67.74
Jan. 8, 1931	53.00	Mar. 6, 1935	47.50	July 11, 1946	80.90
Feb. 4	26.85	July 30	33.30	July 24, 1947	96.72
Mar. 2	25.40	Jan. 24, 1936	41.40	May 15, 1948	92.80
Apr. 23	33.30	July 12	41.50	Sept. 14	108.46
May 23	22.85	Aug. 16	63.05		

N-8-45. Lat. 28°32', long. 99°50'. Depth 500 feet, diameter 6 inches,  
cased to 80. Land-surface datum is 591.1 feet above msl.

Jan. 28, 1928	72.80	Nov. 18, 1929	88.90	Jan. 17, 1930	88.80
Oct. 9, 1929	86.20	Dec. 17	84.15	Feb. 21	105.60
		(continued on next page)			

## WATER-LEVEL MEASUREMENTS IN DIMMIT COUNTY--CONTINUED

Date	Water level	Date	Water level	Date	Water level
------	-------------	------	-------------	------	-------------

N-8-45--continued.

Mar. 18, 1930	100.85	Feb. 5, 1931	68.60	Dec. 2, 1931	81.40
June 17	76.40	Mar. 6	70.20	Jan. 5, 1932	70.20
July 17	81.40	Apr. 29	69.85	Feb. 3	74.65
Aug. 26	88.95	June 4	63.20	Mar. 20	73.80
Sept. 24	92.50	June 24	67.40	July 1	79.15
Oct. 27	77.75	July 30	61.45	Aug. 27	78.20
Dec. 9	75.80	Sept. 30	69.70	Mar. 18, 1933	65.85
Jan. 9, 1931	85.70	Nov. 4	85.00		

N-8-47. Lat. 28°31', long. 99°50'. Depth 500 feet, diameter 6 inches.  
Land-surface datum is 602.3 feet above msl.

Oct. 12, 1929	98.20	June 4, 1931	72.20	July 10, 1937	80.96
Nov. 18	86.40	June 24	75.60	Aug. 24	99.29
Dec. 5	88.90	July 30	70.20	Jan. 15, 1938	79.03
Dec. 17	91.40	Sept. 30	77.80	Aug. 20	94.27
Jan. 17, 1930	96.90	Nov. 4	91.10	Apr. 7, 1939	94.38
Feb. 21	112.70	Dec. 2	88.75	July 18	85.38
Mar. 18	107.00	Jan. 5, 1932	79.00	Aug. 11	85.08
Apr. 21	109.90	Feb. 3	82.50	Dec. 11	90.18
May 17	89.80	Mar. 20	83.10	July 30, 1940	83.96
June 17	84.35	July 1	88.67	Aug. 5, 1941	86.66
July 17	87.45	Aug. 27	88.05	Aug. 11, 1942	92.58
Aug. 26	95.75	Dec. 22	79.42	Aug. 10, 1943	118.94
Sept. 24	99.50	Mar. 18, 1933	74.70	Dec. 20	98.64
Oct. 27	85.85	Sept. 16	85.50	July 10, 1944	99.41
Dec. 9	85.55	Mar. 14, 1935	90.35	Aug. 10	117.50
Jan. 9, 1931	92.75	July 30	82.10	July 25, 1945	109.62
Feb. 5	77.00	Jan. 26, 1936	82.50	July 9, 1946	104.50
Mar. 6	78.50	Aug. 24	85.90	July 24, 1947	113.82
Apr. 29	78.40				

N-8-49. Lat. 28°31', long. 99°49'. Depth 475 feet, diameter 6 inches.

Oct. 12, 1929	91.0	Sept. 20, 1955	193.06	Sept. 17, 1956	206.81
Oct. 7, 1954	184.26				

N-8-50. Lat. 28°32', long. 99°49'. Depth 570 feet, diameter 5 inches, cased to 400. Land-surface datum is 564.3 feet above msl.

Oct. 14, 1929	73.80	Dec. 17, 1929	72.90	Feb. 21, 1930	81.50
Nov. 18	73.05	Jan. 17, 1930	73.50	Mar. 18,	82.95
		(continued on next page)			

## WATER-LEVEL MEASUREMENTS IN DIMMIT COUNTY--CONTINUED

Date	Water level	Date	Water level	Date	Water level
------	-------------	------	-------------	------	-------------

## N-8-50--continued

Apr. 21, 1930	81.70	Apr. 29, 1931	60.50	July 10, 1937	58.95
May 17	75.30	June 4	53.05	Aug. 17	63.79
June 17	70.65	June 24	52.55	Jan. 15, 1938	61.63
July 17	68.40	July 30	48.20	Aug. 20	63.09
Aug. 26	71.10	Sept. 30	54.15	Apr. 7, 1939	70.40
Sept. 24	72.85	July 1, 1932	64.40	July 18	64.17
Oct. 27	69.60	Aug. 27	66.83	Aug. 11	64.50
Dec. 9	64.20	Dec. 22	60.14	Dec. 11	66.23
Jan. 9, 1931	66.90	Mar. 18, 1933	55.40	July 30, 1940	56.40
Feb. 5	60.90	Sept. 16	58.75	Aug. 5, 1941	58.17
Mar. 5	57.60	Aug. 28, 1934	67.45	Aug. 11, 1942	65.94

N-8-56. Lat  $28^{\circ}32'$ , long.  $99^{\circ}47'$ . Depth 700  $\pm$  feet, diameter 10 inches.  
Land-surface datum is 733.4 feet above msl.

Oct. 14, 1929	59.00	Mar. 17, 1930	71.35	Dec. 9, 1930	45.50
Nov. 18	59.55	June 17	58.70	Jan. 9, 1931	56.25
Dec. 17	62.10	July 17	54.70	Feb. 5	44.10
Jan. 17, 1930	66.00	Aug. 26	59.00	Mar. 5	38.10
Feb. 21	81.55	Sept. 24	67.25	Apr. 29	40.65
Mar. 18	87.50	Oct. 27	57.65	July 1, 1932	48.75
Apr. 21	85.50				

N-8-58. Lat.  $28^{\circ}33'$ , long.  $99^{\circ}46'$ . Depth 834 feet, diameter 8 inches.  
Land-surface datum is 625.8 feet above msl.

Oct. 16, 1929	45.70	Jan. 5, 1932	45.95	Aug. 20, 1938	34.06
Nov. 18	47.30	Feb. 3	50.50	Apr. 8, 1939	52.23
Dec. 17	54.25	Mar. 20	41.75	July 18	39.98
Jan. 17, 1930	57.80	July 1	39.50	Aug. 11	39.47
Feb. 21	70.70	Aug. 27	37.90	Dec. 11	41.18
Mar. 18	80.15	Dec. 22	41.02	July 30, 1940	25.06
Apr. 21	74.70	Mar. 18, 1933	28.55	Aug. 5, 1941	26.51
May 17	63.50	Aug. 28, 1934	47.05	Aug. 11, 1942	44.03
June 17	51.65	Mar. 14, 1935	56.95	Aug. 10, 1943	62.98
July 17	45.20	Jan. 26, 1936	36.30	July 10, 1944	53.37
Aug. 26	47.90	Aug. 24	40.75	Aug. 10	62.36
Sept. 24	54.95	July 10, 1937	32.49	July 25, 1945	53.34
Sept. 30, 1931	17.90	Aug. 17	36.70	July 9, 1946	55.23
Nov. 4	34.80	Jan. 15, 1938	38.98	July 24, 1947	66.47
Dec. 2	58.45				

## WATER-LEVEL MEASUREMENTS IN DIMMIT COUNTY--CONTINUED

Date	Water level	Date	Water level	Date	Water level
------	-------------	------	-------------	------	-------------

N-8-70. Lat. 28°31', long. 99°46'. Depth 545 feet, diameter 12 inches.

Nov. 29, 1929	56.50	Mar. 18, 1930	83.10	July 17, 1930	52.10
Dec. 5	57.25	Apr. 21	80.75	Aug. 26	56.30
Dec. 17	61.05	May 17	66.60	Sept. 24	64.60
Jan. 17, 1930	64.50	June 21	54.10	July 1, 1932	46.35
Feb. 21	76.95				

N-8-71. Lat. 28°32', long. 99°45'. Diameter 8 inches. Land-surface datum is 525.6 feet above msl.

Nov. 29, 1929	54.40	Apr. 29, 1931	37.65	Mar. 18, 1933	30.95
Dec. 17	58.85	June 4	27.90	Sept. 16	30.10
Jan. 17, 1930	62.85	June 24	25.20	Aug. 28, 1934	50.60
Feb. 21	76.45	July 30	20.95	Mar. 14, 1935	57.94
Mar. 18	84.20	Sept. 30	22.30	July 30	41.75
Apr. 21	81.00	Nov. 4	39.70	Jan. 26, 1936	37.62
May 17	67.75	Dec. 2	60.45	Aug. 24	44.45
June 17	55.60	Jan. 5, 1932	48.30	July 10, 1937	33.43
July 17	48.90	Feb. 3	54.75	Jan. 15, 1938	41.38
Sept. 24	62.50	Mar. 20	43.95	Aug. 20	37.57
Jan. 9, 1931	50.50	July 1	43.10	Apr. 9, 1939	59.00
Feb. 5	40.75	Aug. 27	41.58	Aug. 11	43.35
Mar. 6	34.45	Dec. 22	42.04	July 30, 1940	26.81

N-8-73. Lat. 28°32', long. 99°41'. Diameter 6 inches. Land-surface datum is 503.0 feet above msl.

Oct. 21, 1929	29.45	Dec. 10, 1930	25.60	Mar. 22, 1932	29.05
Nov. 18	33.00	Feb. 9, 1931	22.00	May 6	34.20
Dec. 24	36.30	Mar. 3	17.80	July 5	23.80
Jan. 21, 1930	42.05	Apr. 24	21.20	Aug. 27	21.20
Feb. 18	55.45	June 4	11.75	Dec. 20	22.46
Mar. 19	59.80	June 26	13.65	Mar. 21, 1933	19.89
Apr. 17	58.00	July 27	5.60	Sept. 18	15.60
May 16	51.00	Sept. 29	8.70	July 13, 1937	16.66
June 17	37.25	Dec. 2	39.35	Aug. 14	30.98
July 14	36.10	Jan. 11, 1932	29.90	Aug. 25, 1938	26.04
Aug. 22	38.25	Feb. 4	43.05	Aug. 15, 1939	30.61
Sept. 23	49.40				

## WATER-LEVEL MEASUREMENTS IN DIMMIT COUNTY--CONTINUED

Date	Water level	Date	Water level	Date	Water level
------	-------------	------	-------------	------	-------------

N-8-103. Lat. 28°30', long. 99°41'. Depth 780 feet, diameter 10 inches.  
Land-surface datum is 501.6 feet above msl.

Nov. 26, 1929	40.25	May 6, 1932	41.20	Aug. 3, 1940	12.94
Dec. 24	42.00	July 5	27.38	Aug. 5, 1941	11.90
Jan. 21, 1930	51.05	Aug. 27	25.48	Aug. 10, 1942	28.77
Mar. 20	66.35	Dec. 20	23.67	July 11, 1946	39.80
Apr. 17	71.50	July 30, 1935	25.15	July 24, 1947	49.72
June 17	41.15	Aug. 27, 1936	28.71	Aug. 11, 1948	71.92
Dec. 10	36.80	July 13, 1937	20.49	Sept. 14	80.00
Feb. 9, 1931	26.20	Aug. 15	35.41	Aug. 12, 1949	60.53
Mar. 3	22.10	Jan. 13, 1938	26.51	Aug. 15, 1950	85.67
Apr. 24	27.00	Aug. 25	28.00	Sept. 12, 1951	139.31
June 4	16.55	Apr. 7, 1939	58.98	Aug. 19, 1952	186.02
July 27	10.10	July 20	29.25	Sept. 9, 1953	208.33
Sept. 29	12.00	Aug. 15	32.42	Oct. 5, 1954	216.5
Feb. 4, 1932	53.10	Dec. 8	27.73	Sept. 20, 1955	214.73

N-8-119a. Lat. 28°35', long. 99°49'. Diameter 10 inches.

Oct. 12, 1954	229.29	Sept. 21, 1955	237.61
---------------	--------	----------------	--------

N-9-5. Lat. 28°35', long. 99°37'. Depth 1,353 feet, diameter 8 inches.  
Land-surface datum is 576.7 feet above msl.

Nov. 29, 1929	90.65	May 17, 1930	103.00	Apr. 5, 1931	81.00
Dec. 17	92.80	June 21	95.70	June 4	75.60
Mar. 30, 1930	109.10	Feb. 5, 1931	84.10		

N-9-8. Lat. 28°35', long. 99°34'. Depth 1,412 feet, diameter 8 inches.  
Land-surface datum is 537.3 feet above msl.

Nov. 30, 1929	54.05	June 21, 1930	54.00	Feb. 5, 1931	45.60
Dec. 17	54.35	July 18	52.30	Mar. 5	47.45
Jan. 17, 1930	55.40	Aug. 23	54.45	Apr. 29	42.10
Feb. 24	60.85	Oct. 31	50.60	May 27	42.30
Apr. 22	74.70	Dec. 12	49.40	June 24	42.10
May 21	58.35	Jan. 13, 1931	51.80	July 28	38.40
(continued on next page)					



## WATER-LEVEL MEASUREMENTS IN DIMMIT COUNTY--CONTINUED

Date	Water level	Date	Water level	Date	Water level
------	-------------	------	-------------	------	-------------

## N-9-8--continued

Nov. 4, 1931	50.35	Dec. 22, 1932	50.90	July 18, 1939	56.20
Dec. 2	49.10	Sept. 19, 1933	45.30	Aug. 11	57.28
Feb. 3, 1932	52.30	Aug. 17, 1937	64.97	July 30, 1940	49.67
Mar. 29	51.60	Jan. 15, 1938	54.11	Aug. 5, 1941	47.98
July 2	49.80	Aug. 22	57.52	July 25, 1945	62.28
Aug. 27	48.30				

N-9-12. Lat. 28°34', long 99°35'. Depth 1,469 feet, perforations at 1,185-1,469, diameter 8 to 6 inches. Land-surface datum is 493.3 feet above msl.

Oct. 18, 1929	17.10	May 27, 1931	6.55	Aug. 17, 1937	21.08
Nov. 18	20.20	June 24	9.30	Jan. 15, 1938	17.03
Dec. 5	19.00	July 28	6.30	Aug. 22	18.27
Dec. 17	19.85	Sept. 30	7.40	Apr. 8, 1939	30.53
Jan. 17, 1930	21.00	Nov. 4	15.25	July 18	17.90
Feb. 24	30.00	Dec. 2	16.30	Aug. 11	20.17
Mar. 20	29.00	Jan. 5, 1932	12.35	Dec. 11	19.21
Apr. 21	34.50	Feb. 3	12.30	July 30, 1940	9.91
May 21	28.15	Mar. 29	21.80	Aug. 5, 1941	8.65
June 21	17.40	July 2	13.94	Aug. 11, 1942	17.71
July 17	17.30	Aug. 27	13.45	Aug. 10, 1943	24.70
Aug. 26	18.30	Dec. 22	13.90	May 14, 1948	51.56
Sept. 24	23.30	Mar. 23, 1933	22.60	Sept. 14	53.87
Oct. 27	15.35	Sept. 19	11.70	Aug. 12, 1949	44.27
Oct. 31	15.15	Aug. 28, 1934	28.35	Sept. 12, 1951	107.02
Dec. 12	17.40	Mar. 14, 1935	26.64	Aug. 19, 1952	124.36
Jan. 9, 1931	20.90	July 30	16.20	Sept. 9, 1953	150.6
Feb. 5	10.30	Jan. 27, 1936	24.35	Sept. 20, 1955	192.7
Mar. 5	16.00	Aug. 24	22.20	Sept. 19, 1956	217.4
Apr. 29	11.15	July 10, 1937	13.23		

N-9-16. Lat. 28°34', long. 99°32'. Depth 1,640 feet, diameter 6 inches. Land-surface datum is 551.1 feet above msl.

Nov. 18, 1929	74.00	July 18, 1930	65.40	Apr. 30, 1931	60.10
Dec. 17	67.25	Oct. 31	64.75	May 27	56.65
Feb. 24, 1930	72.55	Jan. 13, 1931	63.65	June 25	56.70
May 21	71.15	Feb. 5	59.90	July 28	53.80
June 21	66.75	Mar. 5	59.30	Dec. 5	61.75
(continued on next page)					

## WATER-LEVEL MEASUREMENTS IN DIMMIT COUNTY--CONTINUED

Date	Water level	Date	Water level	Date	Water level
------	-------------	------	-------------	------	-------------

## N-9-16--continued

July 2, 1932	63.70	Aug. 11, 1942	65.04	July 22, 1947	77.16
Aug. 27	61.80	Aug. 10, 1943	77.88	May 15, 1948	97.64
Dec. 22	66.35	July 11, 1944	75.50	Aug. 11	97.72
July 30, 1935	66.00	Aug. 10	80.51	Sept. 14	98.89
July 10, 1937	64.84	July 25, 1945	75.73	Aug. 12, 1949	93.70
Aug. 11, 1939	67.73	July 9, 1946	72.27	Aug. 15, 1950	109.5

N-9-25. Lat.  $28^{\circ}31'$ , long.  $99^{\circ}37'$ . Depth 1,300 feet, diameter 10 inches.  
Land-surface datum is 487.4 feet above msl.

Nov. 29, 1929	17.70	Mar. 6, 1931	6.20	July 30, 1940	5.15
Dec. 17	20.95	Apr. 30,	7.40	July 11, 1944	30.61
Jan. 17, 1930	21.85	May 27	2.85	Aug. 10	36.84
Feb. 21	30.95	June 24	3.45	July 25, 1945	29.92
Mar. 20	35.65	July 2, 1932	12.60	July 11, 1946	24.97
Apr. 21	37.15	Aug. 27	11.65	May 14, 1948	55.37
May 17	28.80	Dec. 22	11.03	Sept. 14	57.50
June 21	19.45	Sept. 19, 1933	3.50	Aug. 12, 1949	44.30
July 10	17.15	Mar. 14, 1935	22.98	Aug. 15, 1950	70.25
Aug. 23	17.30	July 30	11.80	Sept. 12, 1951	116.31
Sept. 24	23.30	Jan. 27, 1936	20.30	Aug. 19, 1952	151.67
Oct. 31	15.65	July 10, 1937	10.39	Sept. 9, 1953	180.1
Dec. 12	11.75	Aug. 17	25.11	Oct. 6, 1954	183.4
Jan. 9, 1931	16.00	Jan. 15, 1938	17.53	Sept. 20, 1955	199.3
Feb. 5	8.40	Dec. 11, 1939	15.38		

N-9-32. Lat.  $28^{\circ}31'$ , long.  $99^{\circ}34'$ . Depth 1,428 feet, diameter 8 inches.  
Land-surface datum is 499.2 feet above msl.

Dec. 3, 1929	22.85	Feb. 5, 1931	22.00	Mar. 23, 1933	24.50
Dec. 17	23.50	Apr. 29	21.35	July 10, 1937	23.19
Jan. 17, 1930	23.10	May 27	19.30	Jan. 15, 1938	25.82
Feb. 24	26.80	June 24	19.30	July 18, 1939	27.06
Apr. 21	39.55	July 28	15.50	Aug. 11	28.88
May 21	32.60	Sept. 30	16.40	July 30, 1940	18.68
June 21	27.35	Dec. 5	25.55	Aug. 5, 1941	18.75
July 18	28.20	Jan. 12, 1932	20.90	July 22, 1947	40.80
Aug. 23	29.25	Feb. 12	25.15	Sept. 14, 1948	62.39
Sept. 24	32.15	Mar. 20	26.60	Aug. 12, 1949	52.42
Oct. 31	28.50	July 2	24.80	Aug. 19, 1952	148.90
Dec. 12	25.25	Aug. 27	24.38	Sept. 9, 1953	174.35
Jan. 13, 1931	26.25	Dec. 22	22.83		

## WATER-LEVEL MEASUREMENTS IN DIMMIT COUNTY--CONTINUED

Date	Water level	Date	Water level	Date	Water level
------	-------------	------	-------------	------	-------------

N-9-33. Lat. 28°31', long. 99°34'. Depth 1,524 feet, diameter 6 to 5 inches, cased to 1,512, perforations 1,062-1,512.

Aug. 12, 1932	16.00	Dec. 11, 1939	24.08	July 22, 1947	38.61
Dec. 22	13.76	July 30, 1940	17.09	May 14, 1948	39.55
Aug. 24, 1936	35.52	Aug. 5, 1941	17.55	Aug. 11	42.85
July 10, 1937	21.61	Aug. 11, 1942	30.66	Sept. 14	46.19
Aug. 17	34.94	Aug. 10, 1943	43.55	Aug. 12, 1949	51.32
Jan. 15, 1938	23.48	July 11, 1944	38.97	Aug. 15, 1950	53.45
Aug. 22	35.78	Aug. 10	43.79	Sept. 12, 1951	80.01
Apr. 9, 1939	43.06	July 25, 1945	40.25	Aug. 19, 1952	98.44
July 18	26.44	July 11, 1946	35.12	Sept. 9, 1953	121.24
Aug. 11	27.53				

N-9-39. Lat. 28°31', long. 99°32'. Depth 1,529 feet, diameter 8 inches. Land-surface datum is 491.9 feet above msl.

Jan. 31, 1928	13.2	Jan. 16, 1930	23.15	Apr. 29, 1931	17.10
Sept.	12.3	Feb. 24	30.00	June 24	14.00
May 13, 1929	29.5	Apr. 21	36.55	July 28	10.10
May 24	28.2	June 21	23.40	Dec. 5	16.85
June 1	27.00	July 18	21.60	Mar. 29, 1932	16.00
June 10	25.0	Aug. 23	20.50	July 2	18.40
July 9	22.0	Jan. 13, 1931	19.20	Aug. 27	16.83
Sept. 22	18.0	Feb. 5	15.65		

N-9-43. Lat. 28°31', long. 99°30'. Depth 1,760 feet, diameter 8 inches. Land-surface datum is 504.1 feet above msl.

Jan. 3, 1930	27.00	Feb. 5, 1931	23.15	Mar. 24, 1932	20.40
Feb. 24	30.20	Mar. 6	21.50	July 2	25.20
Apr. 22	32.00	Apr. 30	23.30	Oct. 27	24.17
May 21	30.60	May 27	20.80	Dec. 22	22.15
June 26	27.75	June 25	21.30	Mar. 23, 1933	21.05
July 18	26.50	July 28	17.75	Sept. 16	22.05
Aug. 23	26.30	Oct. 5	20.35	Aug. 28, 1934	34.25
Sept. 24	28.25	Dec. 5	21.70	Mar. 14, 1935	29.80
Oct. 31	25.90	Jan. 12, 1932	19.55	July 30	26.60
Dec. 12	24.20	Feb. 12	20.60	Jan. 27, 1936	32.20
Jan. 13, 1931	24.85				



## WATER-LEVEL MEASUREMENTS IN DIMMIT COUNTY--CONTINUED

Date	Water level	Date	Water level	Date	Water level
------	-------------	------	-------------	------	-------------

0-7-1. Lat. 28°36', long. 99°26'. Depth 2,200 feet, diameter 12 inches.

Mar. 15, 1928	172	Jan. 16, 1948	129.8		
---------------	-----	---------------	-------	--	--

0-7-2. Lat. 28°36', long. 99°26'. Depth 1,800 feet, diameter 12 inches.

Aug. 19, 1952	158.05	Sept. 19, 1956	258.58		
---------------	--------	----------------	--------	--	--

0-7-3. Lat. 28°36', long. 99°26'. Depth 1,800 feet, diameter 12 inches.  
Land-surface datum is 604.2 feet above msl.

Nov. 18, 1929	96.10	July 28, 1931	91.05	July 30, 1940	93.31
Dec. 17	94.05	Oct. 5	90.10	Aug. 5, 1941	93.34
Jan. 17, 1930	95.00	Dec. 5	91.00	Aug. 11, 1942	96.12
Feb. 24	94.45	Jan. 12, 1932	90.70	Aug. 10, 1943	102.23
Apr. 22	96.05	Feb. 12	91.10	July 11, 1944	103.38
May 21	96.40	Mar. 24	91.40	Aug. 10	103.56
June 26	96.15	July 2	92.74	July 25, 1945	102.49
July 18	95.65	Aug. 27	92.93	July 9, 1946	105.38
Aug. 23	95.20	Dec. 22	92.25	July 22, 1947	108.13
Sept. 24	95.15	Mar. 23, 1933	91.90	Sept. 14, 1948	118.01
Oct. 31	95.50	Sept. 16	92.25	June 16, 1949	120.60
Dec. 12	94.40	Aug. 28, 1934	99.25	Aug. 13	119.77
Jan. 13, 1931	94.20	July 30, 1935	98.30	Aug. 15, 1950	124.95
Feb. 5	93.50	Aug. 25, 1936	97.25	Sept. 12, 1951	147.11
Mar. 5	92.80	July 10, 1937	94.44	Sept. 9, 1953	193.08
Apr. 30	92.95	Jan. 15, 1938	97.43	Oct. 6, 1954	202.11
May 27	92.35	Apr. 8, 1939	97.59	Sept. 20, 1955	236.3
June 25	91.75	Aug. 11	98.37	Sept. 19, 1956	284.76

S-1-1. Lat. 28°28', long. 99°56'. Depth 250 feet, diameter 10 inches.  
Land-surface datum is 743.6 feet above msl.

Jan. 9, 1930	101.60	Feb. 7, 1931	101.60	Feb. 11, 1932	102.00
Mar. 17	101.25	Apr. 25	101.70	Mar. 19	102.05
Apr. 16	101.35	June 8	101.65	June 30	101.90
May 19	101.60	July 2	101.70	Aug. 29	102.02
June 17	101.35	Nov. 6	102.00	Mar. 18, 1933	101.95
Oct. 20	101.55	Dec. 4	101.95	Sept. 20	102.20
Dec. 11	101.65	Jan. 7, 1932	102.00	Aug. 27, 1934	102.10
Jan. 9, 1931	101.70				

## WATER-LEVEL MEASUREMENTS IN DIMMIT COUNTY--CONTINUED

Date	Water level	Date	Water level	Date	Water level
------	-------------	------	-------------	------	-------------

S-1-11. Lat. 28°29', long. 99°52'. Depth 150 feet, diameter 15 inches, cased to 6. Land-surface datum is 654.4 feet above msl.

Jan. 7, 1930	45.20	Dec. 11, 1930	45.70	Oct. 3, 1931	45.40
Apr. 16	45.00	Jan. 9, 1931	45.70	Nov. 6	45.65
May 19	45.06	Feb. 7	45.60	Mar. 18, 1932	45.15
June 17	44.90	Mar. 4	45.50	June 30	45.88
July 15	45.05	Apr. 25	45.75	Aug. 29	46.08
Aug. 26	45.20	June 8	45.65	Mar. 18, 1933	45.00
Sept. 25	45.75	July 2	45.65	Sept. 20	45.05
Oct. 20	45.25				

S-1-14. Lat. 28°27', long. 99°55'. Depth 240 feet, diameter 10 inches.

Mar. 4, 1930	56.4	Sept. 11, 1951	48.13	Sept. 19, 1955	51.70
July 21, 1947	56.80	Aug. 20, 1952	48.96	Sept. 17, 1956	52.87

S-1-15. Lat. 28°27', long. 99°45'. Depth 270 feet, diameter 10 inches, cased to 20.

Apr. 1, 1930	51.90	Oct. 3, 1931	52.30	Jan. 11, 1938	54.08
May 19	52.20	Nov. 6	52.60	Aug. 23	55.50
July 15	52.20	Dec. 4	52.40	Apr. 5, 1939	54.56
Aug. 26	51.30	Jan. 7, 1932	52.70	July 17	54.75
Sept. 25	52.15	Feb. 11	52.45	Aug. 12	54.90
Oct. 20	52.45	Mar. 18	52.40	Aug. 2, 1940	55.14
Dec. 11	52.20	June 30	52.65	Aug. 6, 1941	55.47
Jan. 9, 1931	52.40	Aug. 29	52.65	Aug. 6, 1943	56.21
Feb. 7	52.25	Dec. 22	52.45	July 8, 1944	56.72
Mar. 4	52.15	Mar. 18, 1933	52.40	July 24, 1945	57.01
Apr. 25	52.15	Sept. 20	53.00	July 9, 1946	57.24
June 8	52.25	Aug. 27, 1934	53.30	July 21, 1947	57.56
July 2	52.35				

## WATER-LEVEL MEASUREMENTS IN DIMMIT COUNTY--CONTINUED

Date	Water level	Date	Water level	Date	Water level
------	-------------	------	-------------	------	-------------

S-1-16. Lat. 28°27', long. 99°53'. Depth 295 feet, diameter 10 inches.  
Land-surface datum is 669.2 feet above msl.

Mar. 1, 1930	54.90	Dec. 22, 1932	55.25	Aug. 9, 1942	59.87
June 13	55.00	Mar. 18, 1933	55.40	Aug. 6, 1943	59.92
July 15	55.00	Sept. 20	55.90	Dec. 20	60.19
Aug. 26	55.10	Mar. 12, 1935	56.80	Aug. 11, 1944	61.82
Sept. 25	55.20	July 28	56.90	July 24, 1945	60.92
Oct. 20	55.25	Jan. 24, 1936	56.75	July 10, 1946	61.52
Mar. 4, 1931	55.35	Aug. 26	57.61	May 15, 1948	63.54
Apr. 25	55.50	July 14, 1937	57.38	Aug. 10	63.89
July 2	55.50	Aug. 13	59.67	Sept. 14	65.08
Oct. 3	55.60	Jan. 11, 1938	57.86	Aug. 12, 1949	64.57
Nov. 6	55.90	Aug. 23	59.18	Sept. 11, 1951	69.17
Dec. 4	55.65	Apr. 5, 1939	57.38	Aug. 20, 1952	68.18
Jan. 7, 1932	55.75	July 17	58.41	Sept. 10, 1953	69.75
Feb. 11	55.85	Aug. 12	58.61	Oct. 5, 1954	70.94
Mar. 18	56.00	Dec. 9	58.72	Sept. 19, 1955	72.56
June 30	56.05	Aug. 2, 1940	58.63	Sept. 17, 1956	74.26
Aug. 29	56.15	Aug. 3, 1941	59.09		

S-1-18. Lat. 28°22', long. 99°32'. Depth 320 feet, diameter 10 inches.  
Land-surface datum is 704.1 feet above msl.

Mar. 18, 1930	99.00	Mar. 18, 1932	102.20	Aug. 3, 1941	105.29
May 19	101.80	June 30	102.21	Aug. 8, 1942	105.83
June 16	101.60	Aug. 29	102.53	Aug. 6, 1943	107.37
July 15	101.60	Dec. 22	102.03	July 8, 1944	108.22
Aug. 26	101.85	Sept. 20, 1933	102.45	Aug. 11	108.85
Sept. 26	102.00	Aug. 27, 1934	103.10	July 24, 1945	109.50
Oct. 20	102.00	Mar. 12, 1935	103.55	July 9, 1946	109.93
Dec. 11	102.00	July 28	103.25	July 21, 1947	111.72
Jan. 9, 1931	102.20	Jan. 24, 1936	103.42	May 16, 1948	113.04
Feb. 7	101.90	Aug. 26	104.22	Aug. 10	113.86
Mar. 4	101.80	July 14, 1937	103.14	Sept. 14	114.07
Apr. 25	102.20	Aug. 13	104.00	Oct. 11	114.47
June 9	101.80	Jan. 11, 1938	104.01	Nov. 9	114.20
July 2	101.90	Aug. 23	104.48	Dec. 23	114.25
Oct. 3	101.70	Apr. 5, 1939	104.74	Jan. 19, 1949	114.32
Nov. 6	102.15	July 17	104.74	Mar. 4	113.88
Dec. 4	102.15	Aug. 12	104.94	Apr. 18	114.19
Jan. 7, 1932	102.25	Dec. 9	105.06	May 11	113.82
Feb. 11	102.30	Aug. 2, 1940	104.90	June 16	113.80

(continued on next page)

## WATER-LEVEL MEASUREMENTS IN DIMMIT COUNTY--CONTINUED

Date	Water level	Date	Water level	Date	Water level
------	-------------	------	-------------	------	-------------

## S-1-18--continued

July 16, 1949	113.84	Dec. 8, 1950	116.37	Mar. 26, 1952	118.72
Aug. 12	113.98	Jan. 13, 1951	116.45	Apr. 21	118.89
Sept. 22	114.44	Feb. 11	116.49	May 26	119.12
Oct. 29	114.60	Apr. 4	116.69	June 25	119.14
Dec. 3	115.08	May 4	116.93	July 24	119.54
Jan. 25, 1950	114.74	June 1	116.86	Aug. 20	119.80
Apr. 6	115.32	July 10	116.90	Aug. 22	119.78
May 2	115.04	July 31	116.01	Sept. 25	120.16
June 7	114.75	Sept. 11	117.83	Oct. 23	120.53
July 10	115.16	Oct. 24	118.07	Sept. 9, 1953	122.11
Aug. 3	115.21	Nov. 21	118.07	Oct. 12, 1954	124.04
Sept. 5	115.11	Dec. 21	118.21	Sept. 19, 1955	126.16
Oct. 3	115.55	Jan. 24, 1952	118.37	Sept. 17, 1956	128.90
Nov. 2	116.11	Feb. 22	118.50		

S-1-30. Lat. 28°22', long 99°56'. Depth 280 feet, diameter 8 inches.

Nov. 12, 1930	197.2	Sept. 20, 1956	205.13		
---------------	-------	----------------	--------	--	--

S-2-24. Lat. 28°27', long. 99°46'. Depth 667 feet, diameter 12 inches.  
Land-surface datum is 581.7 feet above msl.

Nov. 1, 1928	136.0	July 3, 1932	97.40	Dec. 9, 1939	106.05
Nov. 15	138.0	Aug. 29	99.00	Aug. 3, 1940	95.57
July 14, 1930	105.15	Dec. 20	93.50	Aug. 4, 1941	90.32
Oct. 31	106.62	Sept. 18, 1933	92.65	Aug. 9, 1942	102.83
Dec. 10	96.40	July 29, 1935	91.35	Aug. 12, 1943	140.29
Jan. 15, 1931	106.60	Jan. 23, 1936	90.98	Dec. 19	124.96
Feb. 9	91.40	July 12, 1937	91.38	July 10, 1946	120.01
Mar. 3	87.00	Aug. 14	109.23	July 22, 1947	125.22
Apr. 24	101.90	Jan. 13, 1938	88.10	May 15, 1948	146.35
May 26	84.40	Aug. 18	104.82	Sept. 14	163.7
June 26	78.55	Apr. 9, 1939	126.50	Aug. 12, 1949	133.47
Dec. 3	109.15	July 16	96.14	Aug. 16, 1950	152.73
Jan. 6, 1932	94.40	Aug. 13	97.69	Oct. 5, 1954	141.62
May 6	106.10				

## WATER-LEVEL MEASUREMENTS IN DIMMIT COUNTY--CONTINUED

Date	Water level	Date	Water level	Date	Water level
------	-------------	------	-------------	------	-------------

S-2-27. Lat. 28°27', long. 99°42'. Depth 1,000 feet, diameter 8 inches.  
Land-surface datum is 528.4 feet above msl.

Nov. 26, 1929	75.20	Jan. 11, 1932	54.10	Aug. 4, 1941	50.41
Dec. 24	76.45	Feb. 4	61.35	Aug. 10, 1942	52.42
Jan. 15, 1930	81.40	Mar. 22	56.60	Aug. 13, 1943	60.41
Feb. 18	89.40	May 6	67.90	July 11, 1944	65.76
Mar. 20	100.70	July 5	56.30	Aug. 11	65.50
Apr. 17	98.10	Aug. 30	56.10	July 24, 1945	64.43
May 16	86.45	Dec. 20	52.20	July 11, 1946	68.66
June 18	71.10	Mar. 21, 1933	47.00	July 24, 1947	68.07
July 14	65.15	Sept. 18	45.00	May 15, 1948	71.70
Sept. 23	79.55	Mar. 11, 1935	56.55	Aug. 11	73.30
Dec. 10	59.40	July 30	51.40	Sept. 14	74.21
Feb. 9, 1931	56.10	Jan. 23, 1936	49.45	Aug. 12, 1949	75.57
Mar. 3	49.60	Aug. 27	56.74	Aug. 16, 1950	82.42
Apr. 24	60.10	July 13, 1937	47.37	Sept. 12, 1951	91.41
June 4	46.70	Jan. 13, 1938	53.51	Aug. 19, 1952	111.0
June 26	44.90	Aug. 19	52.09	Sept. 9, 1953	114.2
July 27	39.00	Apr. 12, 1939	72.83	Oct. 5, 1954	117.8
Sept. 29	39.60	Aug. 11	56.50	Sept. 20, 1955	136.3
Dec. 3	66.45	Dec. 8	54.43	Sept. 19, 1956	134.1

S-2-29. Lat. 28°27', long. 99°49'. Depth 680 feet, diameter 10 inches.  
Land-surface datum is 592.0 feet above msl.

Oct. 2, 1929	87.80	Sept. 29, 1931	60.90	Aug. 25, 1936	81.30
Dec. 17	84.50	Dec. 3	78.10	July 12, 1937	67.10
Feb. 18, 1930	92.4	Jan. 6, 1932	68.75	Aug. 14, 1937	78.11
May 16	89.00	Feb. 4	71.25	Jan. 13, 1938	66.10
July 14	74.60	Mar. 22	70.95	Aug. 18	73.24
Aug. 22	82.45	May 6	78.25	Apr. 8, 1939	79.59
Dec. 10	72.75	July 3	73.90	July 16	72.12
Jan. 15, 1931	79.70	Aug. 29	73.90	Aug. 12	73.74
Feb. 9	68.40	Dec. 20	70.05	Dec. 9	82.14
Mar. 3	64.30	Mar. 21, 1933	63.60	Aug. 3, 1940	68.29
Apr. 24	75.70	Sept. 18	68.00	Aug. 4, 1941	68.55
May 26	62.50	Mar. 10, 1935	70.10	Aug. 9, 1942	72.58
June 26	59.65	July 29	68.20	Aug. 12, 1943	98.65
July 27	54.75	Jan. 23, 1936	65.48		



## WATER-LEVEL MEASUREMENTS IN DIMMIT COUNTY--CONTINUED

Date	Water level	Date	Water level	Date	Water level
------	-------------	------	-------------	------	-------------

S-2-77. Lat. 28°26', long. 99°43'. Diameter 10 inches. Land-surface datum is 522.3 feet above msl.

Dec. 14, 1929	72.55	July 14, 1930	58.30	Dec. 20, 1932	45.76
Jan. 15, 1930	77.20	Dec. 3, 1931	59.45	Sept. 18	38.40
Feb. 18	85.85	May 6, 1932	60.95	Aug. 27, 1936	49.96
Mar. 20	95.95	July 5	48.00	July 13, 1937	40.61
May 16	79.55	Aug. 30	49.23	Aug. 15	51.60
June 18	62.90				

S-2-78. Lat. 28°24', long. 99°43'. Depth 1,000 feet, diameter 12 inches. Land-surface datum is 636.4 feet above msl.

Dec. 7, 1929	190.75	Feb. 4, 1932	165.60	Aug. 4, 1941	143.20
Jan. 15, 1930	200.90	May 6	173.35	Aug. 10, 1942	159.77
Mar. 19	210.70	July 3	167.75	Aug. 12, 1943	184.11
Apr. 17	216.15	Aug. 30	163.18	Dec. 18	187.28
May 16	193.60	Dec. 20	158.30	July 11, 1944	176.11
June 18	186.70	Mar. 21, 1933	159.55	Aug. 12	190.57
July 14	174.65	Sept. 18	153.00	July 24, 1945	182.54
Aug. 22	172.90	Mar. 10, 1935	162.25	July 10, 1946	176.47
Sept. 23	191.10	July 29	153.15	July 22, 1947	178.23
Oct. 31	173.50	Jan. 23, 1936	153.95	May 16, 1948	201.69
Dec. 10	173.70	Aug. 25	159.61	Aug. 10	202.34
Jan. 15, 1931	181.45	July 12, 1937	151.54	Sept. 15	211.97
Feb. 9	163.25	Aug. 14	164.84	Aug. 12, 1949	185.17
Apr. 4	175.70	Jan. 13, 1938	156.04	Aug. 16, 1950	205.82
May 26	157.65	Aug. 19	157.24	Sept. 11, 1951	246.30
June 26	151.40	Apr. 8, 1939	170.41	Aug. 19, 1952	260.45
July 27	146.35	July 15	156.70	Sept. 9, 1953	278.25
Sept. 29	149.30	Aug. 15	158.02	Oct. 5, 1954	257.65
Dec. 3	170.55	Dec. 10	164.96	Sept. 20, 1955	268.10
Jan. 6, 1932	162.25	Aug. 3, 1940	145.23	Sept. 19, 1956	274.83

S-2-86. Lat. 28°23', long. 99°43'. Depth 1,021 feet, diameter 10 inches, cased to 727. Land-surface datum is 615.7 feet above msl.

Nov. 1, 1928	133.	Jan. 15, 1931	155.70	Sept. 29, 1931	126.70
Nov. 15	137.	Feb. 9	141.60	Dec. 3	143.80
July 14, 1930	149.80	Apr. 24	149.70	Jan. 11, 1932	136.90
Aug. 22	150.90	June 26	131.00	Mar. 22	146.00
Oct. 31	150.28	July 27	126.15	May 6	149.30
Dec. 10	146.00				

(continued on next page)

## WATER-LEVEL MEASUREMENTS IN DIMMIT COUNTY--CONTINUED

Date	Water level	Date	Water level	Date	Water level
------	-------------	------	-------------	------	-------------

S-2-86--continued

July 3, 1932	143.70	July 29, 1935	130.20	July 16, 1939	126.54
Aug. 30	141.80	Jan. 23, 1936	131.30	Aug. 15	127.33
Dec. 20	135.10	Aug. 27	137.50	Aug. 3, 1940	122.87
Sept. 18, 1933	129.60	Aug. 19, 1938	128.01	Aug. 4, 1941	121.67
Mar. 10, 1935	134.00				

S-2-90. Lat. 28°26', long. 99°40'. Diameter 10 inches. Land-surface datum is 568.7 feet above msl.

Dec. 14, 1929	127.50	Feb. 9, 1931	102.00	Feb. 4, 1932	98.40
Jan. 15, 1930	121.40	Mar. 3	94.85	Mar. 22	97.60
Feb. 18	130.05	Apr. 24	107.20	May 6	107.60
Mar. 20	137.15	June 4	93.00	July 5	100.90
May 16	127.70	June 26	89.60	Aug. 30	99.20
July 14	108.80	July 27	85.95	Dec. 20	95.30
Aug. 22	108.40	Sept. 29	84.35	Mar. 21, 1933	90.50
Sept. 23	115.70	Dec. 3	102.55	Sept. 18	90.60
Dec. 10	104.00	Jan. 11, 1932	95.85		

S-2-91. Lat. 28°22', long. 99°44'. Depth 1,385 feet, diameter 10 inches. Land-surface datum is 651.0 feet above msl.

Dec. 13, 1929	153.40	July 3, 1932	141.50	Aug. 15, 1937	135.53
Jan. 15, 1930	154.00	Aug. 3	140.50	Jan. 13, 1938	137.02
Feb. 18	155.80	Dec. 20	140.50	Aug. 19	137.06
Mar. 19	156.70	Mar. 10, 1935	139.35	Apr. 8, 1939	148.91
Apr. 17	156.20	July 29	139.10	July 15	138.84
May 16	155.65	Jan. 23, 1936	138.00	Aug. 15	139.06
June 18	154.20	Aug. 27	138.50	Aug. 4, 1940	138.46
July 14	153.65	July 12, 1937	135.18	Aug. 4, 1941	135.60
Aug. 22	153.00				

## WATER-LEVEL MEASUREMENTS IN DIMMIT COUNTY--CONTINUED

Date	Water level	Date	Water level	Date	Water level
------	-------------	------	-------------	------	-------------

S-2-94. Lat. 28°20', long. 99°46'. Depth 1,424 feet, diameter 10 inches.  
Land-surface datum is 694.1 feet above msl.

Dec. 10, 1929	190.70	Jan. 11, 1932	193.70	Jan. 13, 1938	176.60
Jan. 15, 1930	192.00	Feb. 4	190.60	Aug. 24	176.96
Feb. 18	191.70	Mar. 22	182.50	Aug. 15, 1939	176.01
Mar. 19	192.30	May 6	187.60	Aug. 4, 1940	171.28
Apr. 17	191.60	July 3	181.90	Aug. 4, 1941	168.84
May 16	191.10	Aug. 30	183.50	Dec. 18, 1943	195.55
June 19	189.60	Dec. 20	177.30	Aug. 12, 1944	191.54
July 14	189.50	Mar. 21, 1933	176.90	July 24, 1945	187.26
Aug. 22	189.80	Sept. 18	174.50	July 10, 1946	193.04
Sept. 23	192.30	Mar. 10, 1935	172.95	Aug. 19, 1952	239.99
Oct. 31	192.05	July 29	174.20	Sept. 9, 1953	252.87
Dec. 10	188.70	Jan. 23, 1936	172.35	Oct. 13, 1954	244.44
Jan. 15, 1931	189.90	July 12, 1937	171.63	Sept. 20, 1955	245.61
Feb. 9	188.35	Aug. 14,	171.78	Sept. 19, 1956	269.77
Mar. 3	187.10				

S-2-102. Lat. 28°22', long. 99°10'. Depth 1,185 feet, diameter 12 inches.  
Land-surface datum 582.0 feet above msl.

Oct. 25, 1929	109.80	Dec. 30, 1932	106.25	July 22, 1947	110.91
Nov. 19	119.90	Mar. 21, 1933	100.00	Aug. 10, 1948	113.60
Feb. 18, 1930	140.80	Sept. 18	100.00	Sept. 14	113.87
Mar. 19	148.50	Mar. 11, 1935	106.45	Oct. 11	114.31
May 16	133.60	July 29	102.00	Nov. 9	114.87
June 19	123.80	Jan. 23, 1936	106.60	Dec. 23	115.52
July 14	119.60	Aug. 27	114.32	Jan. 19, 1949	116.02
Sept. 23	125.80	July 13, 1937	110.14	Mar. 4	115.59
Oct. 31	118.85	Jan. 13, 1938	107.48	Apr. 18	115.64
Feb. 9, 1931	112.10	July 15, 1939	110.31	May 11	115.37
Mar. 3	116.40	Aug. 15	110.08	June 16	115.11
Apr. 24	120.20	Dec. 8	110.07	July 16	114.73
June 26	103.75	Aug. 3, 1940	103.80	Aug. 13	114.58
July 27	99.50	Aug. 4, 1941	100.82	Sept. 22	114.21
Sept. 29	98.85	Aug. 10, 1942	105.11	Oct. 29	114.23
Jan. 11, 1932	105.10	Aug. 13, 1943	113.45	Dec. 3	114.28
Mar. 22	115.35	Dec. 18	114.77	Jan. 25, 1950	113.90
Apr. 4	119.55	July 11, 1944	113.99	Mar. 9	114.29
May 6	119.00	Aug. 12	113.14	Apr. 6	115.02
July 5	116.75	July 21, 1945	112.55	May 2	115.05
Aug. 30	113.90	July 10, 1946	112.45	June 7	115.16
(continued on next page)					



## WATER-LEVEL MEASUREMENTS IN DIMMIT COUNTY--CONTINUED

Date	Water level	Date	Water level	Date	Water level
------	-------------	------	-------------	------	-------------

## S-2-102--continued

July 10, 1950	115.18	July 31, 1951	120.23	June 25, 1952	126.85
Aug. 3	115.36	Sept. 11	123.31	July 24	127.39
Sept. 5	115.35	Oct. 24	123.31	Aug. 19	127.99
Oct. 3	115.34	Nov. 21	123.37	Aug. 22	127.99
Nov. 2	116.50	Dec. 21	123.50	Sept. 25	129.02
Dec. 8	116.36	Jan. 24, 1952	124.64	Oct. 23	129.80
Jan. 13, 1951	117.38	Feb. 22	124.81	Sept. 9, 1953	137.94
Feb. 11	117.46	Mar. 26	125.06	Oct. 5, 1954	147.88
May 4	120.08	Apr. 21	125.88	Sept. 20, 1955	143.77
June 1	120.38	May 26	126.64	Sept. 19, 1956	146.04
July 10	120.42				

S-3-8. Lat. 28°23', long. 99°37'. Depth 1,263 feet, diameter 12 inches.  
Land-surface datum is 589.7 feet above msl.

Nov. 19, 1929	146.30	June 19, 1930	134.30	Mar. 3, 1931	122.85
Dec. 17	139.70	July 14	130.40	Apr. 24	139.10
Jan. 15, 1930	143.80	Aug. 22	130.45	June 4	118.75
Mar. 19	152.30	Sept. 23	135.15	June 26	114.60
Apr. 17	156.10	Dec. 10	131.25	Sept. 29	109.70
May 16	144.80	Feb. 9, 1931	124.10		

S-3-10. Lat, 28°23', long. 99°33'. Depth 1,419 feet, diameter 8 inches.  
Land-surface datum is 544.9 feet above msl.

Dec. 17, 1929	83.50	Jan. 11, 1932	67.85	Aug. 15, 1939	73.96
Jan. 15, 1930	83.05	Feb. 4	67.90	Aug. 3, 1940	65.34
Feb. 18	86.40	Mar. 22	67.90	Aug. 4, 1941	64.59
Mar. 19	92.65	May 6	73.70	Aug. 10, 1942	72.84
June 19	83.50	July 5	72.80	Aug. 13, 1943	83.93
July 14	79.45	Aug. 30	71.75	July 7, 1944	88.87
Aug. 22	79.10	Dec. 20	67.70	Aug. 12	88.33
Feb. 9, 1931	74.30	Mar. 31, 1933	64.00	July 24, 1945	85.06
Mar. 3	71.10	Aug. 27, 1936	75.13	July 10, 1946	88.67
May 26	69.90	July 13, 1937	69.56	July 22, 1946	90.16
June 26	68.10	Aug. 14	72.73	May 14, 1948	107.94
July 27	65.75	Jan. 13, 1938	74.96	Sept. 16,	102.03
Sept. 29	63.60	Aug. 25	83.09	Aug. 20, 1952	159.88
Dec. 3	69.95	July 16, 1939	76.36	Sept. 9, 1953	192.42

## WATER-LEVEL MEASUREMENTS IN DIMMIT COUNTY--CONTINUED

Date	Water level	Date	Water level	Date	Water level
------	-------------	------	-------------	------	-------------

S-3-16. Lat. 28°20', long. 99°39'. Depth 1,283 feet, diameter 10 inches.

Dec. 20, 1932	113.34	Apr. 8, 1939	139.56	July 24, 1945	145.93
Aug. 27, 1936	137.80	July 15	132.41	July 10, 1946	143.62
July 13, 1937	128.24	Aug. 15	133.10	July 22, 1947	141.43
Aug. 14	134.82	Aug. 3, 1940	125.32	Sept. 16, 1948	152.53
Jan. 13, 1938	130.55	Aug. 4, 1941	124.59	Aug. 12, 1949	146.30
Aug. 25	132.64	Aug. 13	140.42		

S-5-3. Lat. 28°19', long. 99°42'. Depth 1,422 feet, diameter 10 inches.  
Land-surface datum is 597.2 feet above msl.

Dec. 10, 1929	121.70	Dec. 3, 1931	106.35	July 16, 1939	102.88
Jan. 15, 1930	126.40	Jan. 11, 1932	102.15	Aug. 15	103.10
Feb. 18	128.90	Feb. 4	103.40	Aug. 4, 1940	96.62
June 19	126.20	Mar. 22	104.15	Aug. 4, 1941	94.21
July 14	122.70	May 6	111.80	Aug. 10, 1942	104.57
Aug. 22	117.75	July 3	110.50	Aug. 13, 1943	116.23
Sept. 23	118.25	Aug. 30	109.85	Dec. 18	131.24
Oct. 31	117.40	Dec. 20	103.90	July 7, 1944	119.40
Dec. 10	113.80	Mar. 21, 1933	97.50	Aug. 20	120.89
Jan. 15, 1931	118.40	Sept. 18	97.50	July 21, 1945	137.52
Feb. 9	112.10	Mar. 10, 1935	97.55	July 10, 1946	139.60
Mar. 3	107.50	July 29	98.10	July 22, 1947	137.95
Apr. 24,	115.40	Jan. 23, 1936	97.75	May 15, 1948	143.55
May 26	109.00	July 13, 1937	97.19	Aug. 10	144.67
June 26	106.00	Aug. 14	99.34	Sept. 15	146.87
July 27	100.35	Jan. 13, 1938	102.39	Aug. 13, 1949	141.91
Sept. 29	96.65	Aug. 24	100.18	Aug. 15, 1950	147.78

S-5-5. Lat. 28°15', long. 99°48'. Depth 1,374 feet, diameter 12 to 10 inches, cased to 1,083. Land-surface datum is 612.7 feet above msl.

Dec. 10, 1929	72.45	June 19, 1930	74.60	Mar. 3, 1931	69.40
Jan. 15, 1930	72.15	July 14	73.85	Apr. 24	68.85
Feb. 18	73.70	Aug. 22	72.70	May 26	68.70
Mar. 19	74.20	Sept. 23	71.80	June 26	68.20
Apr. 17	75.60	Dec. 10	70.80	July 27	67.00
May 16	92.80	Feb. 9, 1931	70.15	Sept. 29	65.00
(continued on next page)					

## WATER-LEVEL MEASUREMENTS IN DIMMIT COUNTY--CONTINUED

Date	Water level	Date	Water level	Date	Water level
------	-------------	------	-------------	------	-------------

## S-5-5--continued

Dec. 3, 1931	65.10	Aug. 15, 1939	66.24	July 10, 1946	80.03
Jan. 11, 1932	65.00	Aug. 4, 1940	65.98	July 22, 1947	77.04
Feb. 4	65.40	Aug. 4, 1941	64.48	Aug. 10, 1948	81.95
Aug. 30	67.20	Aug. 10, 1942	68.13	Sept. 16	80.82
Dec. 20	65.60	Aug. 13, 1943	75.07	Aug. 13, 1949	82.13
Mar. 21, 1933	64.50	Dec. 18	75.16	Aug. 15, 1950	85.68
Sept. 18	64.40	July 7, 1944	78.27	Sept. 11, 1951	100.50
Aug. 27, 1936	68.30	Aug. 12	77.08	Aug. 19, 1952	107.98
Aug. 14, 1937	62.67	July 24, 1945	75.87	Sept. 9, 1953	119.80
Aug. 24, 1938	63.72			Oct. 13, 1954	122.92

S-5-10. Lat. 28°17', long. 99°40'. Depth 1,615 feet, diameter 10 inches.  
Land-surface datum is 571.2 feet above msl.

Dec. 11, 1929	85.90	Dec. 3, 1931	81.85	Aug. 24, 1938	79.48
Jan. 15, 1930	86.50	Jan. 11, 1932	80.70	July 16, 1939	83.71
Feb. 18	96.15	Feb. 4	80.00	Aug. 15	81.87
Mar. 19	97.45	Mar. 22	79.90	July 7, 1944	96.56
May 16	100.90	May 6	85.25	Aug. 12	96.76
July 14	95.85	July 3	85.75	July 24, 1945	95.34
Aug. 22	94.10	Aug. 30	85.50	July 10, 1946	97.27
Sept. 23	93.65	Dec. 20	79.64	July 22, 1947	96.13
Oct. 31	92.20	Mar. 21, 1933	75.25	Sept. 16, 1948	104.37
Dec. 10	89.05	Sept. 18	77.90	Aug. 13, 1949	102.40
Jan. 15, 1931	91.25	July 29, 1935	77.15	Aug. 15, 1950	109.91
Feb. 9	88.85	Jan. 23, 1936	76.90	Sept. 11, 1951	132.98
Mar. 3	85.75	Aug. 27	75.13	Aug. 19, 1952	142.78
Apr. 24	89.40	July 12, 1937	75.89	Sept. 9, 1953	159.35
June 26	83.65	Aug. 14	78.79	Sept. 20, 1955	119.45
July 27	81.20	Jan. 13, 1938	82.38	Sept. 19, 1956	102.45
Sept. 29	77.80				

S-6-2. Lat. 28°19', long. 99°36'. Depth 1,170 feet, diameter 10 inches,  
cased to 1,026.

Dec. 11, 1920	69.0	Sept. 20, 1955	84.08	Sept. 19, 1956	83.98
Oct. 4, 1954	91.21				

## WATER-LEVEL MEASUREMENTS IN DIMMIT COUNTY--CONTINUED

Date	Water level	Date	Water level	Date	Water level
------	-------------	------	-------------	------	-------------

S-6-4. Lat. 28°17', long. 99°40'. Depth 1,432 feet, diameter 10 inches.  
Land-surface datum is 482.3 feet above msl.

Apr. 17, 1928	38.80	Jan. 11, 1932	9.60	Aug. 3, 1940	7.09
Nov. 1	23.0	Feb. 4	11.60	Aug. 4, 1941	7.00
Nov. 15	20.0	Mar. 22	13.15	Aug. 10, 1942	10.66
Jan. 15, 1930	24.65	May 6	18.60	Aug. 13, 1943	21.25
Mar. 19	37.20	July 3	17.75	July 7, 1944	22.55
Apr. 17	38.80	Aug. 30	14.75	Aug. 12	21.57
May 16	33.15	Dec. 20	8.38	July 24, 1945	20.39
June 19	24.90	Mar. 21, 1933	1.05	July 10, 1946	20.62
July 14	23.80	Mar. 10, 1935	10.10	July 22, 1947	19.86
Aug. 22	24.80	July 29	6.80	May 15, 1948	19.52
Sept. 23	26.30	Jan. 23, 1936	10.50	Aug. 10	21.80
Oct. 31	20.43	Aug. 27	17.92	Sept. 15	22.32
Dec. 10	18.60	July 13, 1937	7.84	Aug. 13, 1949	21.26
Feb. 9, 1931	16.70	Aug. 14	13.68	Aug. 15, 1950	25.7
Mar. 3	14.00	Jan. 13, 1938	10.21	Sept. 11, 1951	34.68
Apr. 24	20.80	Aug. 25	11.04	Aug. 19, 1952	37.62
May 26	13.80	July 15, 1939	9.84	Sept. 9, 1953	45.70
June 26	12.00	Aug. 15	10.71	Oct. 5, 1954	44.70
July 27	7.30	Dec. 8	9.39	Sept. 20, 1955	34.96
Sept. 29	7.10	May 16, 1940	9.08	Sept. 20, 1956	34.96
Dec. 3	12.15				

S-6-5. Lat. 28°19', long. 99°34'. Depth 1,816 feet, diameter 10 inches,  
cased to 1,760. Land-surface datum is 531.1 feet above msl.

Oct. 21, 1929	50.48	Mar. 19, 1930	50.40	Mar. 3, 1931	48.15
Nov. 4	50.48	Apr. 17	50.37	Apr. 24	48.33
Nov. 5	50.34	May 16	50.23	May 26	64.00
Nov. 20	50.61	June 19	49.44	June 26	51.80
Dec. 26	49.51	June 27	49.52	July 3, 1932	54.30
Jan. 15, 1930	49.47	July 11	49.33	Mar. 21, 1933	55.70
Jan. 29	49.72	Aug. 22	41.12	Sept. 18	49.00
Feb. 18	49.71	Sept. 23	49.12		

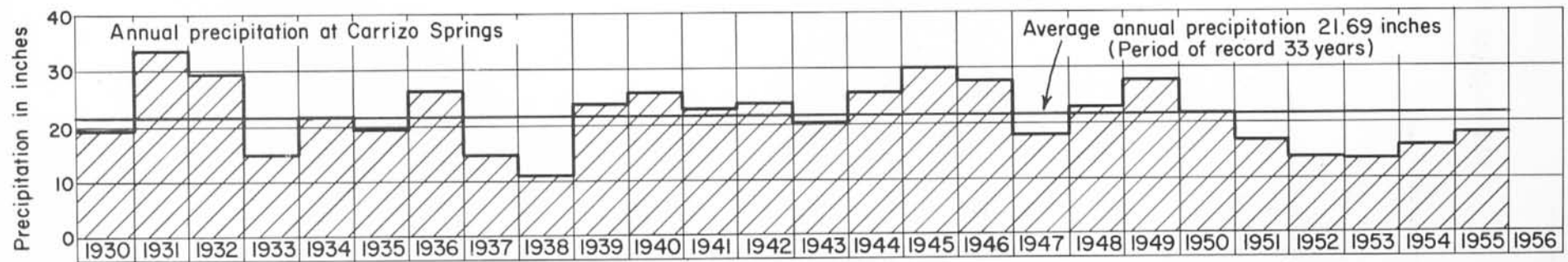
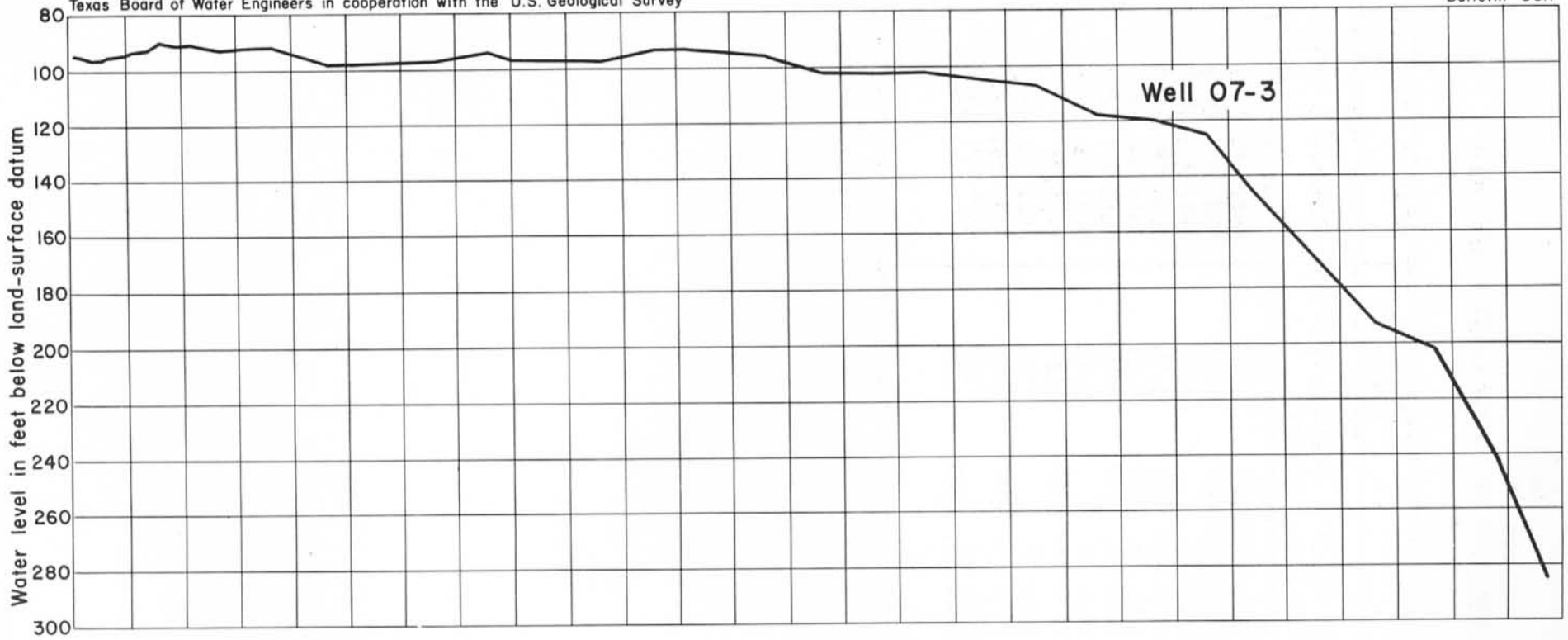
## WATER-LEVEL MEASUREMENTS IN DIMMIT COUNTY--CONTINUED

Date	Water level	Date	Water level	Date	Water level
------	-------------	------	-------------	------	-------------

T-1-5. Lat. 28°27', long. 99°27'. Depth 1,710 feet, diameter 8 inches.  
Land-surface datum is 484.3 feet above msl.

Jan. 6, 1930	3.50	Apr. 30, 1931	1.75	Aug. 5, 1941	2.58
Feb. 24	3.50	July 2, 1932	0.71	Aug. 10, 1943	13.75
Apr. 22	6.80	Aug. 30	1.05	Aug. 10, 1944	14.42
May 21	6.90	Aug. 28, 1934	7.50	July 25, 1945	15.19
June 26	4.90	Aug. 25, 1936	8.15	July 10, 1946	17.48
July 18	4.05	July 30, 1937	4.05	July 22, 1947	16.45
Aug. 23	4.30	Aug. 17	9.19	May 14, 1948	25.77
Sept. 24	4.85	Jan. 15, 1938	6.17	Sept. 21	29.34
Oct. 31	3.80	Aug. 22	8.51	Aug. 13, 1949	28.01
Dec. 12	2.95	July 14, 1939	6.93	Aug. 15, 1950	38.65
Jan. 13, 1931	2.95	Aug. 11	7.95	Sept. 12, 1951	64.34
Feb. 5	1.65	July 30, 1940	1.79		

a pumping



Hydrographs of water levels in well 07-3, Dimmit County, and annual precipitation at Carrizo Springs, Tex.



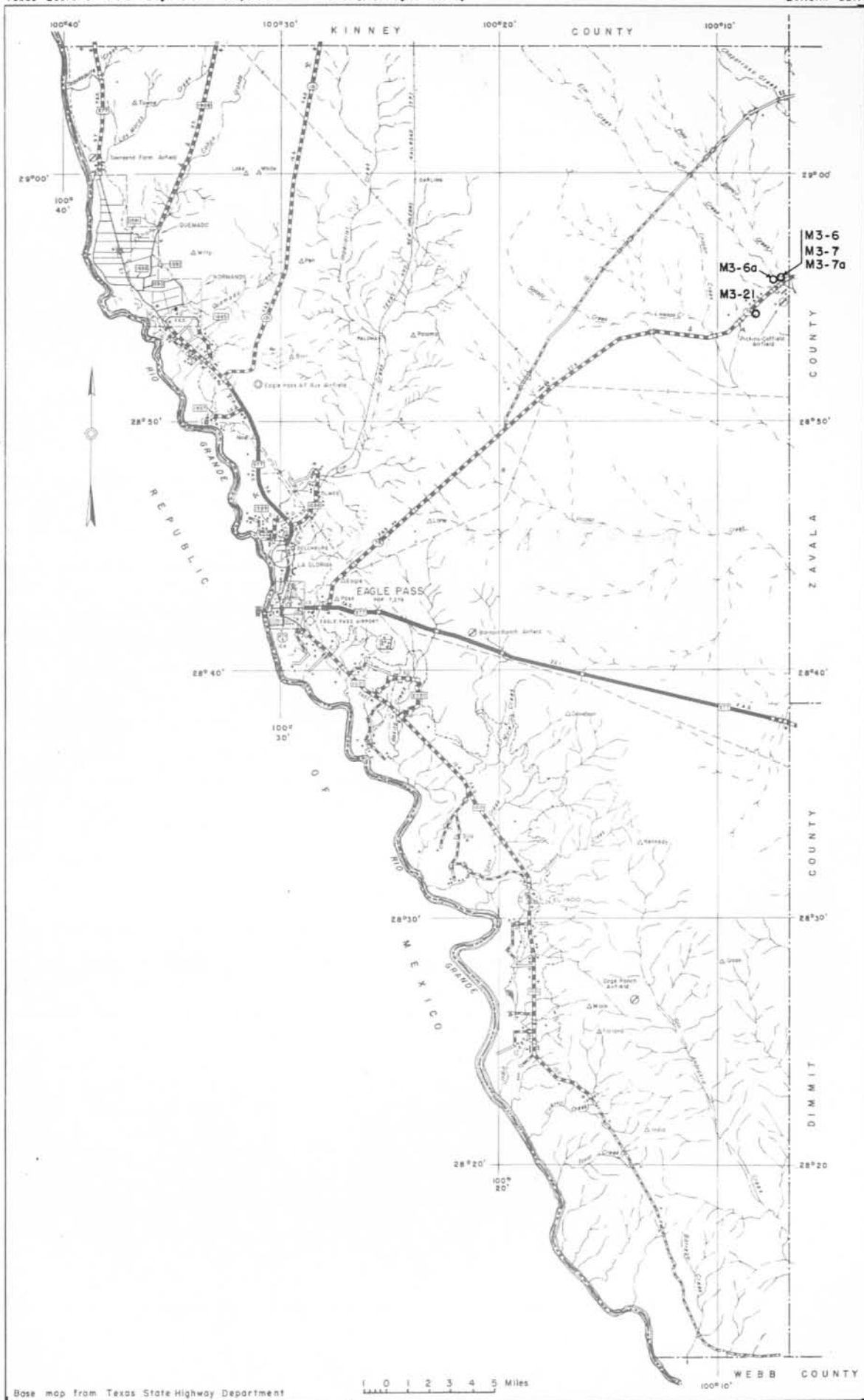
Hydrographs of water levels in wells N9-12 and S1-18 in Dimmit County, Tex.







MAVERICK COUNTY



Base map from Texas State Highway Department

0 1 2 3 4 5 Miles

Observation wells in Maverick County, Tex.

## WATER-LEVEL MEASUREMENTS IN MAVERICK COUNTY, TEX.

Date	Water level	Date	Water level	Date	Water level
------	-------------	------	-------------	------	-------------

M-3-6. Lat. 28°55', long. 100°06'. Depth 100 feet, diameter 10 inches.

Sept. 16, 1948	48.58	Sept. 11, 1953	51.7	Sept. 22, 1955	50.70
Aug. 10, 1949	48.71	Oct. 4, 1954	50.33	Sept. 18, 1956	52.06
Aug. 22, 1952	b58.50				

M-3-6a. Lat. 28°55', long. 100°06'. Depth 127 feet, diameter 11 inches.

Aug. 22, 1952	54.36	Oct. 4, 1954	54.85	Sept. 18, 1956	55.40
Sept. 11, 1953	55.35	Sept. 22, 1955	55.32		

M-3-7. Lat. 28°55', long. 100°06'. Depth 40 feet, diameter 5 inches. Land-surface datum is 689.5 feet above msl.

Jan. 27, 1930	30.50	Sept. 16, 1948	33.55	Aug. 17, 1950	34.90
July 25, 1947	32.31	Aug. 10, 1949	33.73		

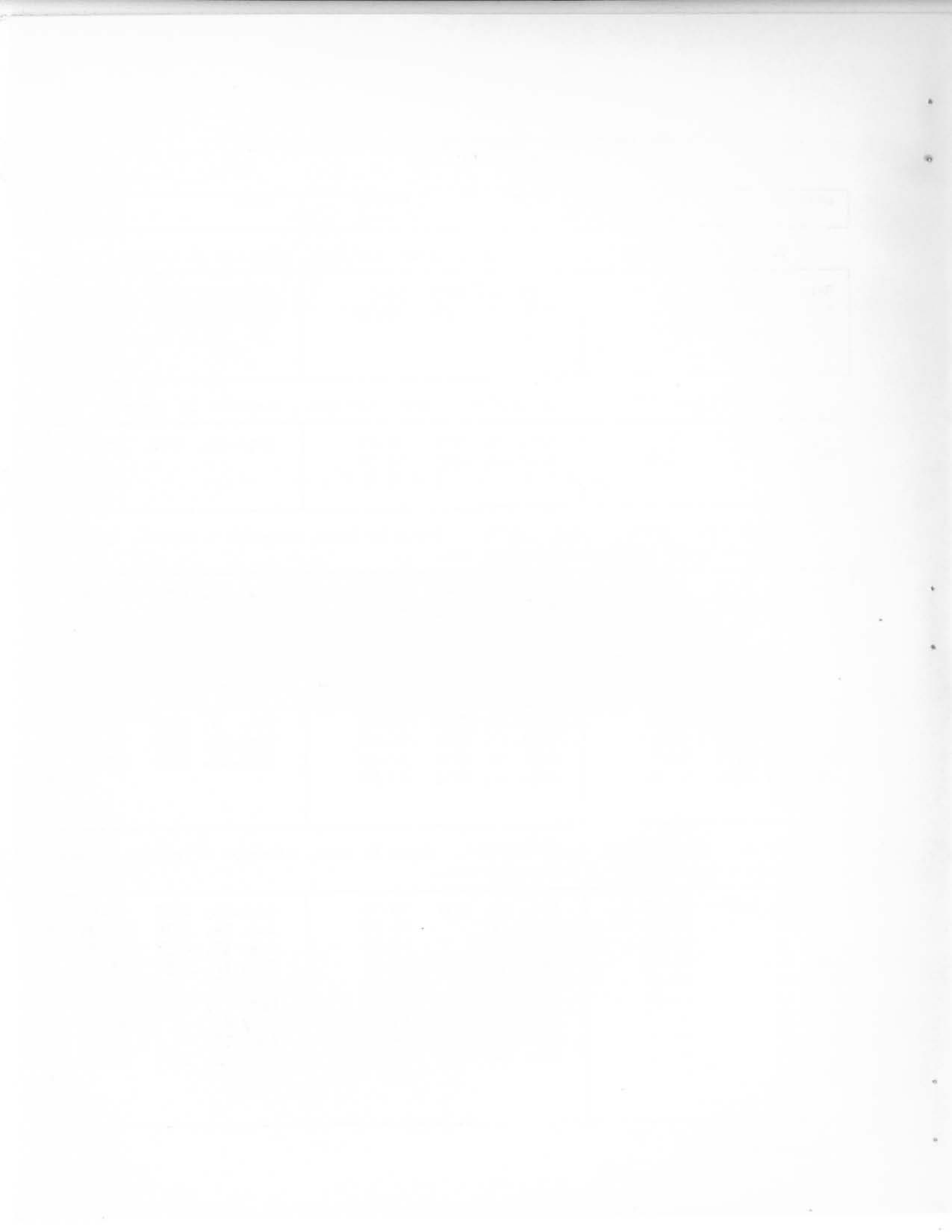
M-3-7a. Lat. 28°55', long. 100°06'. Depth 50 feet, diameter 5 inches.

July 12, 1946	42.37	Aug. 17, 1950	46.40	Oct. 4, 1954	46.38
July 25, 1947	43.48	Sept. 17, 1951	46.58	Sept. 22, 1955	46.82
Sept. 16, 1948	44.07	Aug. 22, 1952	48.22	Sept. 18, 1956	47.93
Aug. 10, 1949	45.02	Sept. 11, 1953	47.68		

M-3-21. Lat. 28°54', long. 100°07'. Depth 81 feet, diameter 6 inches. Land-surface datum is 704.0 feet above msl.

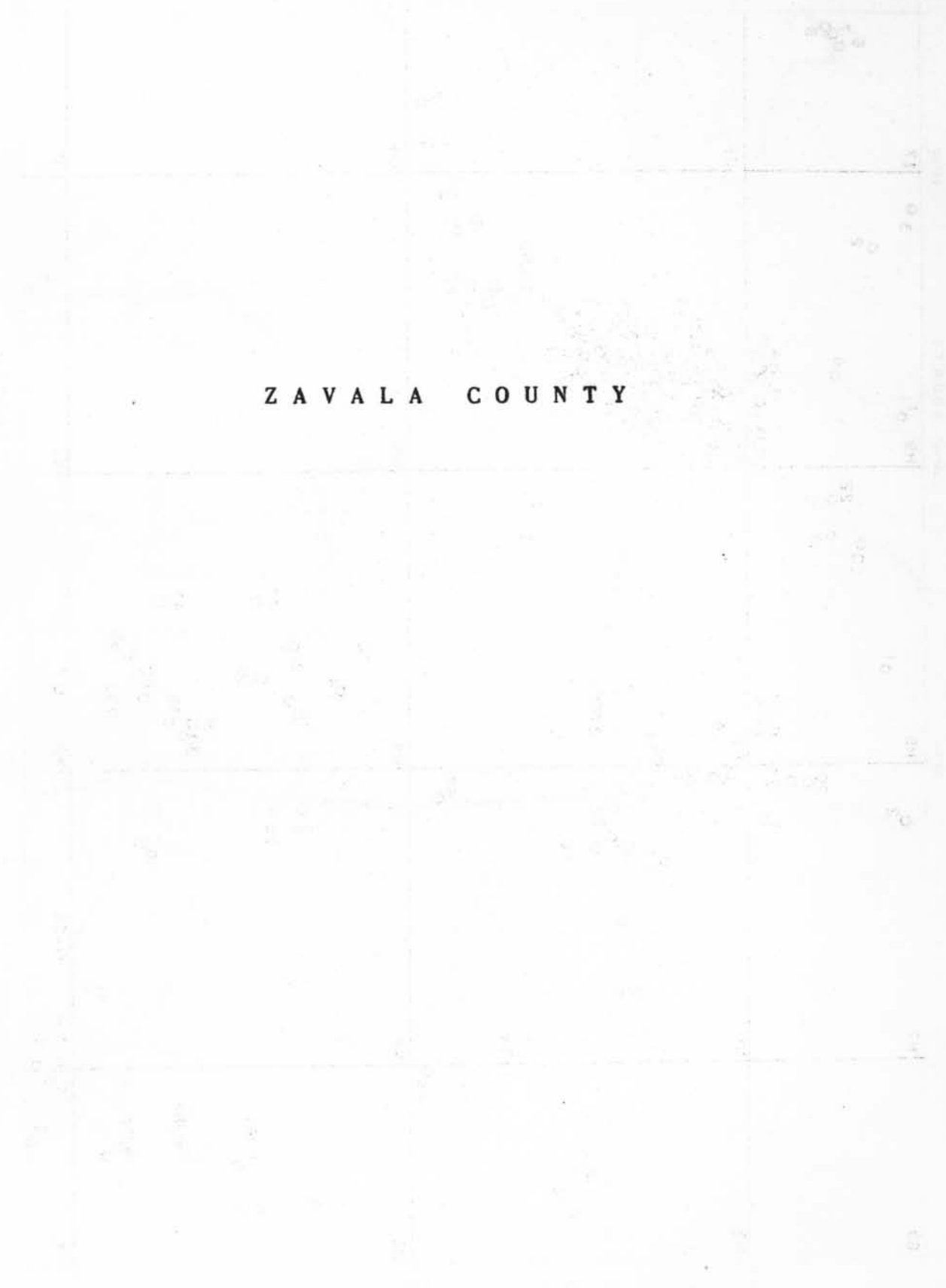
Feb. 6, 1930	44.55	Feb. 11, 1931	45.75	Sept. 22, 1933	44.65
Feb. 22	44.50	June 9	45.50	Aug. 24, 1936	44.90
Mar. 31	44.55	July 6	45.55	Aug. 12, 1937	45.26
Apr. 18	45.10	Jan. 8, 1932	45.15	Jan. 10, 1938	45.05
June 20	44.70	Feb. 10	44.90	Aug. 26	47.66
July 11	44.55	Mar. 23	45.03	Apr. 9, 1939	45.65
Aug. 25	44.60	Aug. 28	45.02	July 21	45.35
Sept. 29	44.80	Dec. 21	44.72	Aug. 21	45.37
Oct. 20	44.80	Mar. 24, 1933	44.60	July 31, 1940	45.45
Dec. 18	45.20				

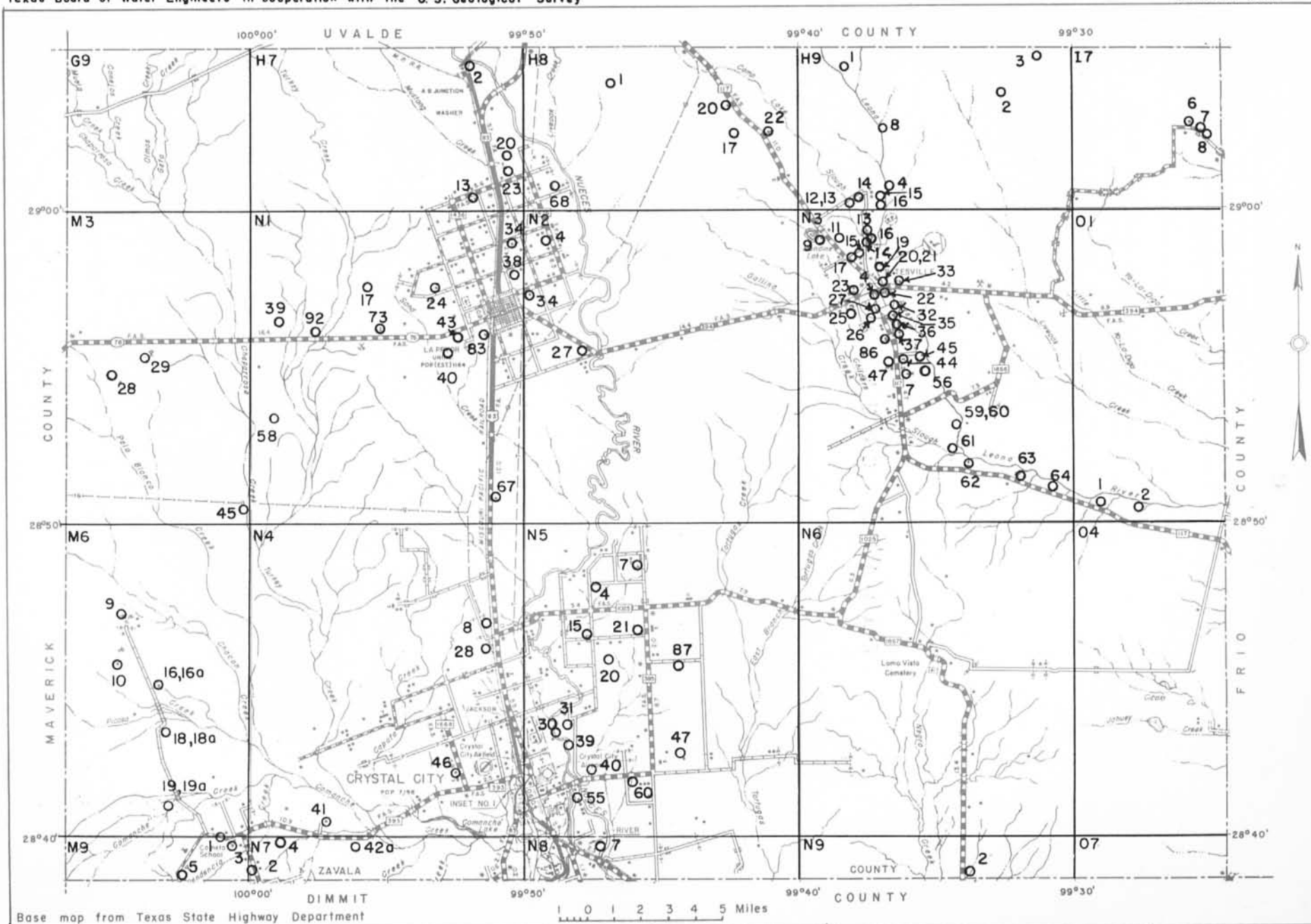
b pumped recently



ZAVALA COUNTY

Scale 1:50,000





Observation wells in Zavala County, Tex.

## WATER-LEVEL MEASUREMENTS IN ZAVALA COUNTY, TEXAS

Date	Water level	Date	Water level	Date	Water level
------	-------------	------	-------------	------	-------------

H-7-2. Lat. 29°05', long. 99°52'. Depth 40 feet, diameter 6 inches.

Oct. 8, 1929	34.30	July 22, 1930	33.00	Oct. 30, 1931	32.70
Nov. 15	33.55	Aug. 29	33.45	Jan. 15, 1932	32.70
Dec. 18	32.45	Oct. 1	33.90	Apr. 2	32.60
Jan. 16, 1930	33.50	Nov. 25	32.60	Apr. 11, 1933	31.70
Mar. 13	33.80	Dec. 17	32.60	July 21	32.20
June 23	34.20	May 14, 1931	31.90		

H-7-13. Lat. 29°00', long. 99°51'. Depth 172 feet, diameter 10 inches, cased to 172, perforations 132-172. Land-surface datum is 787.5 feet above msl.

Feb. 8, 1928	110.45	Aug. 27, 1930	115.15	Sept. 15, 1948	135.50
Nov. 7, 1929	113.30	Sept. 29	115.05	Aug. 10, 1949	137.42
Nov. 19	113.45	May 14, 1931	116.15	Dec. 2	137.95
Nov. 23	113.35	Oct. 29	116.50	Aug. 17, 1950	138.93
Dec. 18	113.45	Jan. 13, 1932	117.15	Sept. 17, 1951	141.98
Jan. 16, 1930	113.85	Mar. 31	117.70	Aug. 22, 1952	149.82
Feb. 28	114.45	Aug. 28	117.95	Sept. 11, 1953	164.30
Mar. 13	114.45	Apr. 11, 1933	119.35	Oct. 4, 1954	152.48
Apr. 9	114.70	Jan. 10, 1938	128.68	Oct. 12	152.24
Apr. 18	114.55	Aug. 27	128.52	Sept. 22, 1955	155.79
May 20	114.80	Aug. 21, 1939	129.68	Sept. 18, 1956	156.2
June 23	114.90	July 31, 1940	131.56		
July 22	114.90	Aug. 6, 1941	131.86		

H-7-20. Lat. 29°01', long. 99°50'. Depth 130 feet, diameter 6 inches. Land-surface datum is 765.0 feet above msl.

Nov. 13, 1929	72.85	Oct. 30, 1931	73.85	July 11, 1946	75.40
Jan. 3, 1930	72.80	Jan. 13, 1932	74.20	July 25, 1947	75.66
Feb. 28	72.90	Apr. 2	74.20	Aug. 27, 1948	72.08
Mar. 13	72.90	Aug. 31	74.25	Sept. 15	76.01
Apr. 9	72.85	Apr. 11, 1933	74.25	Aug. 11, 1949	75.95
Apr. 18	73.20	July 21	74.00	Aug. 17, 1950	75.08
May 20	73.03	Jan. 10, 1938	74.65	Sept. 17, 1951	68.01
June 23	73.00	Apr. 9, 1939	75.19	Aug. 22, 1952	65.18
July 22	73.30	July 31, 1940	76.18	Sept. 11, 1953	67.65
Aug. 27	73.30	Aug. 2, 1941	76.55	Oct. 4, 1954	72.72
Sept. 29	73.35	Aug. 1, 1942	77.38	Sept. 22, 1955	73.20
Dec. 17,	73.40	July 6, 1944	76.17	Sept. 18, 1956	75.81
May 14, 1931	74.30	July 21, 1945	75.88		

a pumping

b pumped recently



## WATER-LEVEL MEASUREMENTS IN ZAVALA COUNTY--CONTINUED

Date	Water level	Date	Water level	Date	Water level
------	-------------	------	-------------	------	-------------

H-7-23. Lat. 29°00', long. 99°50'. Depth 182 feet, diameter 12 inches, cased to 168.

Oct. 4, 1954	132.50	Mar. 23, 1955	132.57	Sept. 18, 1956	134.95
Oct. 12	132.39	Sept. 22	133.15		

H-8-1. Lat. 29°04', long. 99°47'. Depth 120 feet, diameter 5 inches.

Nov. 11, 1929	78.90	May 20, 1930	78.95	Sept. 29, 1930	82.80
Dec. 18	81.50	June 23	78.85	May 14, 1931	78.50
Jan. 16, 1930	80.15	July 22	78.65	Jan. 16, 1932	78.25
Apr. 9	79.05	Aug. 27	94.40	Mar. 31	78.50

H-8-17. Lat. 29°03', long. 99°42'. Depth 234 feet, Diameter 6 inches.

Oct. 28, 1929	179.00	Apr. 8, 1930	180.40	July 24, 1930	180.65
Dec. 23	179.50	May 22	180.10	Aug. 29	181.35
Jan. 15, 1930	179.80	June 25	180.35	Oct. 1	180.00

H-8-20. Lat. 29°03', long. 99°42'. Depth over 300 feet, diameter 8 inches. Land-surface datum is 797.6 feet above msl.

Jan. 20, 1946	94.98	Aug. 7, 1946	96.49	Mar. 5, 1947	96.12
---------------	-------	--------------	-------	--------------	-------

H-8-22. Lat. 29°02', long. 99°41'. Diameter 8 inches. Land-surface datum is 824.5 feet above msl.

Jan. 24, 1936	144.94	Jan. 30, 1946	144.46	Aug. 7, 1946	144.96
---------------	--------	---------------	--------	--------------	--------

## WATER-LEVEL MEASUREMENTS IN ZAVALA COUNTY--CONTINUED

Date	Water level	Date	Water level	Date	Water level
------	-------------	------	-------------	------	-------------

H-8-68. Lat. 29°00', long. 99°48'. Depth 84 feet, diameter 6 inches.

Sept. 17, 1948	60.04	July 31, 1951	63.88	Mar. 23, 1954	67.90
Oct. 12	60.50	Sept. 17	64.82	Apr. 27	68.37
Nov. 10	61.31	Oct. 24	65.41	May 26	68.81
Dec. 27	61.92	Nov. 21	65.69	June 24	67.35
Jan. 20, 1949	62.10	Dec. 21	66.10	July 24	64.41
Mar. 7	59.10	Jan. 24, 1952	66.43	Aug. 28	63.91
Apr. 18	58.37	Feb. 22	66.87	Sept. 28	64.46
May 10	58.27	Mar. 26	67.21	Oct. 25	65.03
June 15	58.22	Apr. 21	67.49	Nov. 23	65.56
July 17	58.44	May 26	67.88	Dec. 21	66.09
Aug. 10	58.75	June 25	66.96	Jan. 21, 1955	66.74
Sept. 22	57.92	July 24	66.44	Feb. 25	67.29
Oct. 29	57.91	Aug. 22	66.68	Mar. 23	67.76
Nov. 29	58.13	Sept. 25	67.15	Apr. 23	68.30
Jan. 25, 1950	58.31	Oct. 23	67.58	May 24	68.87
Mar. 9	58.72	Nov. 24	68.07	June 24	69.39
Apr. 6	59.11	Dec. 21	68.40	July 24	69.95
May 2	59.38	Jan. 23, 1953	68.87	Aug. 25	70.58
June 7	59.43	Feb. 24	69.23	Sept. 22	71.97
July 10	60.53	Mar. 24	69.50	Oct. 25	68.59
Aug. 3	61.36	Apr. 23	69.89	Nov. 22	65.82
Sept. 5	62.22	May 25	69.73	Dec. 20	64.98
Oct. 3	62.55	June 24	70.58	Jan. 22, 1956	64.89
Nov. 2	62.75	July 23	71.02	Feb. 21	65.27
Dec. 8	62.96	Aug. 26	72.88	Mar. 23	65.58
Jan. 13, 1951	63.21	Sept. 11	71.22	Apr. 24	66.11
Feb. 11	63.38	Oct. 26	68.74	May 24	66.60
Apr. 4	63.63	Nov. 24	69.23	June 23	67.12
May 4	63.39	Dec. 20	67.21	July 24	67.82
June 1	63.50	Jan. 26, 1954	67.29	Aug. 24	68.88
July 10	63.79	Feb. 24	67.52	Sept. 21	68.80

H-9-1. Lat. 29°04', long. 99°38'. Depth 58 feet, diameter 6 inches.  
Land-surface datum is 796.5 feet above msl.

Nov. 4, 1929	49.5	Aug. 10, 1946	50.51	Mar. 6, 1947	50.72
Jan. 28, 1946	50.54				

## WATER-LEVEL MEASUREMENTS IN ZAVALA COUNTY--CONTINUED

Date	Water level	Date	Water level	Date	Water level
------	-------------	------	-------------	------	-------------

H-9-2. Lat. 29°04', long. 99°32'. Depth 250 feet, diameter 6 inches.  
Land-surface datum is 869.4 feet above msl.

Nov. 5, 1929	187.95	May 22, 1930	190.70	Oct. 1, 1930	189.75
Dec. 21	188.40	June 25	187.85	Dec. 20	189.80
Jan. 14, 1930	187.20	July 24	188.00	May 13, 1931	188.80
Mar. 13	187.60	Aug. 29	188.75		

H-9-3. Lat. 29°05', long. 99°31'. Depth 204 feet, diameter 6 inches.  
Land-surface datum is 839.9 feet above msl.

Nov. 5, 1929	160.50	June 25, 1930	161.75	Oct. 1, 1930	165.80
Apr. 16, 1930	163.00	July 24	163.40	Dec. 20	163.45
May 22	163.00	Aug. 29	163.40		

H-9-4. Lat. 29°00', long. 99°37'. Depth 45 feet, diameter 48 inches.  
Land-surface datum is 752.7 feet above msl.

Nov. 12, 1929	42.0	Apr. 11, 1930	41.50	July 24, 1930	42.00
Dec. 23	41.60	May 22	42.00	Oct. 1	49.90
Jan. 15, 1930	41.65	June 25	40.65		

H-9-8. Lat. 29°02', long. 99°37'. Depth 57 feet, diameter 8 inches.  
Land-surface datum is 771.8 feet above msl.

Jan. 28, 1946	50.54	Aug. 10, 1946	50.75	Mar. 6, 1947	50.84
---------------	-------	---------------	-------	--------------	-------

H-9-12. Lat. 29°00', long. 99°37'. Diameter 48 inches. Dug well.  
Land-surface datum is 743.7 feet above msl.

Jan. 16, 1946	45.00	Aug. 7, 1946	46.13	Mar. 4, 1947	43.54
---------------	-------	--------------	-------	--------------	-------

## WATER-LEVEL MEASUREMENTS IN ZAVALA COUNTY--CONTINUED

Date	Water level	Date	Water level	Date	Water level
------	-------------	------	-------------	------	-------------

H-9-13. Lat. 29°00', long. 99°37'. Diameter 6 inches. Land-surface datum is 742.7 feet above msl.

Jan. 16, 1946	44.90	Aug. 7, 1946	45.85	Mar. 4, 1947	44.20
---------------	-------	--------------	-------	--------------	-------

H-9-14. Lat. 29°00', long. 99°37'. Depth 50 feet, diameter 10 inches. Land-surface datum is 743.7 feet above msl.

Jan. 16, 1946	43.38	Aug. 7, 1946	45.28	Mar. 4, 1947	39.01
---------------	-------	--------------	-------	--------------	-------

H-9-15. Lat. 29°00', long. 99°37'. Depth 43 feet, diameter 6 inches. Land-surface datum is 741.0 feet above msl.

Jan. 16, 1946	37.20	Aug. 7, 1946	38.39	Mar. 5, 1947	34.55
---------------	-------	--------------	-------	--------------	-------

H-9-16. Lat. 29°00', long. 99°37'. Depth 48 feet, diameter 6 inches. Land-surface datum is 740.5 feet above msl.

Jan. 16, 1946	42.97	Aug. 7, 1946	43.86	Mar. 4, 1947	39.79
---------------	-------	--------------	-------	--------------	-------

I-7-6. Lat. 29°02', long. 99°25'. Depth 260 feet, diameter 16 inches, cased to 260, slotted 180-260.

1946 88	Nov. 12, 1953	114.7	Oct. 12, 1954	111.75
Aug. 19, 1952	106.31			

I-7-7. Lat. 29°02', long. 99°25'. Depth 180 feet, diameter 16 inches, casing slotted 130-180.

Aug. 19, 1952	111.66	Nov. 12, 1953	116.16	Oct. 12, 1954	112.26
---------------	--------	---------------	--------	---------------	--------

## WATER-LEVEL MEASUREMENTS IN ZAVALA COUNTY--CONTINUED

Date	Water level	Date	Water level	Date	Water level
------	-------------	------	-------------	------	-------------

I-7-8. Lat. 29°02', long. 99°25'. Diameter 16 inches.

Oct. 12, 1954	98.20	Apr. 14, 1955	98.50	Jan. 10, 1956	95.73
---------------	-------	---------------	-------	---------------	-------

M-3-28. Lat. 28°55', long. 100°04'. Depth 123 feet, diameter 10 inches, cased to 80.

Feb. 12, 1930	41.47	June 20, 1930	42.21	Feb. 10, 1932	42.40
Apr. 3	41.14	July 16	42.24	Mar. 23	42.43
Apr. 18	42.16	Aug. 25	42.32	Mar. 24, 1933	42.40
May 7	42.16	Sept. 29	42.31	Sept. 22,	42.50
May 20	42.20	Dec. 18	42.33	Jan. 10, 1938	43.33
June 4	42.22	Feb. 11, 1931	42.31	Aug. 26	43.26

M-3-29. Lat. 28°55', long. 100°03'. Depth 150 feet, diameter 6 inches. Land-surface datum is 755.7 feet above msl.

Jan. 25, 1930	96.70	Feb. 10, 1932	96.10	Jan. 10, 1938	96.66
Feb. 22	97.05	Aug. 28	96.25	Aug. 26	96.74
Apr. 18	96.30	Dec. 21	95.95	July 12, 1946	97.60
May 20	96.20	Sept. 22, 1933	96.40	July 25, 1947	97.61
June 20	95.30	Aug. 24, 1936	96.65	Sept. 16, 1948	97.75
July 16	96.20	July 11, 1937	96.76	Aug. 10, 1949	97.94
Aug. 25	96.30	Aug. 12, 1937	96.64	Aug. 21, 1952	99.15
Sept. 29	96.35				

M-3-45. Lat. 28°50', long. 100°00'. Diameter 6 inches. Land-surface datum is 630.1 feet above msl.

Feb. 6, 1930	39.80	Aug. 25, 1930	51.85	Feb. 11, 1931	44.10
May 20	46.35	Sept. 29	46.95	June 9	43.60
July 16	44.25	Dec. 18	45.35		

## WATER-LEVEL MEASUREMENTS IN ZAVALA COUNTY--CONTINUED

Date	Water level	Date	Water level	Date	Water level
------	-------------	------	-------------	------	-------------

M-6-9. Lat. 28°47', long. 100°04'. Depth 335 feet. Land-surface datum is 655.6 feet above msl.

Jan. 17, 1930	67.50	July 3, 1931	66.50	Aug. 26, 1936	53.10
Feb. 19	70.60	Nov. 6	65.30	July 14, 1937	51.93
Mar. 17	70.55	Dec. 4,	66.75	Aug. 16,	51.78
Apr. 16	73.35	Jan. 7, 1932	67.70	Jan. 12, 1938	52.15
May 19	82.30	Feb. 11	67.80	Aug. 24	56.44
June 17	80.00	Mar. 18	68.40	Apr. 6, 1939	52.14
July 15	81.35	July 6	70.10	Aug. 14	52.12
Aug. 26	74.75	Aug. 29	73.69	Aug. 2, 1940	52.15
Sept. 25	76.65	Dec. 22	68.00	Aug. 2, 1941	52.07
Nov. 4	68.65	Mar. 18, 1933	68.80	Aug. 9, 1942	52.69
Dec. 11	66.70	Sept. 21	64.75	Aug. 9, 1943	54.04
Feb. 6, 1931	64.70	Aug. 27, 1934	62.70	July 10, 1944	55.30
Mar. 4	64.85	Mar. 13, 1935	61.95	Aug. 14, 1944	56.64
Apr. 25	68.15	July 31	57.70	July 23, 1945	58.87
June 8	71.75	Jan. 26, 1936	54.55		

M-6-10. Lat. 28°45', long. 100°04'. Diameter 6 inches, depth 150 feet. Land-surface datum is 651.7 feet above msl.

Jan. 21, 1930	70.15	Feb. 11, 1932	b 73.25	Aug. 7, 1942	76.17
Feb. 19	b 71.90	Mar. 18	b 73.35	Aug. 9, 1943	79.58
June 17	73.45	July 6	73.02	July 10, 1944	79.44
July 11	71.30	Aug. 29	b 71.20	July 23, 1945	79.28
Aug. 26	70.60	Dec. 21	70.90	July 12, 1946	83.78
Sept. 25	b 70.35	Mar. 18, 1933	70.25	Sept. 16, 1948	97.08
Dec. 11	68.60	Sept. 21	68.65	Aug. 10, 1949	96.34
Feb. 7, 1931	69.50	Aug. 27, 1934	73.10	Aug. 16, 1950	99.87
Mar. 4	69.10	Aug. 26, 1936	73.81	Sept. 15, 1951	106.66
Apr. 25	69.20	July 14, 1937	73.51	Aug. 20, 1952	110.60
June 28	68.20	Aug. 16	73.41	Sept. 10, 1953	115.48
July 2	67.45	Jan. 12, 1938	74.97	Oct. 6, 1954	117.18
Oct. 2	65.60	Aug. 24	72.55	Sept. 21, 1955	120.75
Nov. 6	67.60	Apr. 6, 1939	76.90	Sept. 20, 1956	123.00
Dec. 4	71.25	Aug. 2, 1940	73.17		
Jan. 7, 1932	72.20	Aug. 2, 1941	73.37		



## WATER-LEVEL MEASUREMENTS IN ZAVALA COUNTY--CONTINUED

Date	Water level	Date	Water level	Date	Water level
------	-------------	------	-------------	------	-------------

M-6-16. Lat.  $28^{\circ}44'$ , long.  $100^{\circ}02'$ . Depth 300 feet, diameter 5 inches.  
Land-surface datum is 626.6 feet above msl.

Jan. 17, 1930	43.90	Nov. 6, 1931	40.35	Aug. 24, 1938	40.74
Feb. 19	42.70	Dec. 4	40.95	Apr. 6, 1939	41.55
Mar. 17	42.85	Jan. 7, 1932	41.10	Aug. 14	42.00
Apr. 16	42.80	Feb. 11	41.50	Aug. 2, 1940	42.66
May 19	42.00	Mar. 18	41.60	Aug. 7, 1942	47.13
June 17	41.40	July 6	41.90	Aug. 9, 1943	46.40
July 15	41.10	Aug. 29	41.75	July 10, 1944	47.11
Aug. 26	40.90	Dec. 21	41.76	July 23, 1945	46.82
Sept. 25	40.85	Mar. 18, 1933	41.80	July 12, 1946	47.40
Nov. 4	40.40	Aug. 27, 1934	42.35	July 23, 1947	49.41
Dec. 11	40.25	Mar. 13, 1935	43.70	Oct. 16, 1948	49.62
Feb. 6, 1931	40.55	Jan. 26, 1936	42.70	Aug. 11, 1949	51.72
Mar. 4	40.55	Aug. 26	41.05	Aug. 16, 1950	52.32
Apr. 25	40.75	July 14, 1937	39.67	Sept. 12, 1951	55.16
June 8	40.80	Aug. 16	39.69	Sept. 10, 1953	54.41
July 3	40.70	Jan. 12, 1938	38.40	Sept. 20, 1956	53.23
Oct. 2	40.05				

M-6-16a. Lat.  $28^{\circ}44'$ , long.  $100^{\circ}02'$ . Depth 300 feet, diameter 6 inches.

July 23, 1947	61.40	Sept. 12, 1951	74.20	Oct. 6, 1954	104.22
Sept. 16, 1948	71.72	Aug. 20, 1952	91.19	Sept. 21, 1955	107.62
Aug. 11, 1949	71.70	Sept. 10, 1953	101.10	Sept. 20, 1956	114.86
Aug. 16, 1950	73.96				

M-6-18. Lat.  $28^{\circ}42'$ , long.  $100^{\circ}02'$ . Depth 530 feet, diameter 6 inches.  
Land-surface datum is 612.9 feet above msl.

Jan. 17, 1930	a 35.80	Nov. 4, 1930	34.20	Mar. 18, 1932	b 38.40
Feb. 19	b 40.00	Mar. 4, 1931	b 35.85	July 6	38.15
Mar. 17	40.80	June 8	32.20	Aug. 29	b 35.67
Apr. 16	41.90	July 3	31.40	Dec. 21	b 35.92
May 19	41.65	Oct. 2	29.65	Mar. 18, 1933	34.70
June 17	38.40	Nov. 6	33.35	Sept. 20	32.95
July 15	36.80	Dec. 4	37.75	Aug. 27, 1934	38.45
Aug. 26	38.65	Jan. 7, 1932	37.40	Mar. 13, 1935	a 46.48
Sept. 25	40.00	Feb. 11	b 40.10	Jan. 26, 1936	39.80
(continued on next page)					

## WATER-LEVEL MEASUREMENTS IN ZAVALA COUNTY--CONTINUED

Date	Water level	Date	Water level	Date	Water level
------	-------------	------	-------------	------	-------------

## M-6-18--continued

Aug. 26, 1936	39.3	Aug. 7, 1942	41.51	Aug. 10, 1949	63.99
July 14, 1937	39.49	Aug. 9, 1943	45.55	Aug. 16, 1950	68.84
Aug. 16, 1937	39.15	July 10, 1944	44.78	Sept. 12, 1951	83.20
Jan. 12, 1938	40.08	Aug. 14	44.80	Aug. 20, 1952	81.25
Aug. 24	37.26	July 23, 1945	44.74	Sept. 10, 1953	81.56
Apr. 6, 1939	44.00	July 12, 1946	51.66	Oct. 6, 1954	80.28
Aug. 14	41.39	July 23, 1947	56.28	Sept. 21, 1955	82.60
Aug. 2, 1940	38.06	Sept. 16, 1948	66.94	Sept. 20, 1956	81.69
Aug. 2, 1941	38.06				

## M-6-18a. Lat. 28°42', long. 100°02'. Depth 290 feet, diameter 6 inches.

Sept. 16, 1948	66.60	Sept. 12, 1951	87.40	Oct. 6, 1954	108.69
Aug. 11, 1949	63.53	Aug. 20, 1952	94.68	Sept. 21, 1955	110.99
Aug. 16, 1950	67.86	Sept. 10, 1953	103.62	Sept. 20, 1956	123.27

## M-6-19. Lat. 28°40', long. 100°02'. Depth 180 feet, diameter 6 inches.

Jan. 17, 1930	49.15	Dec. 4, 1931	51.10	Apr. 6, 1939	59.30
Feb. 19	b 50.40	Jan. 7, 1932	51.15	Aug. 14	55.23
Mar. 17	50.45	Feb. 10	51.90	Aug. 2, 1940	56.00
Apr. 16	51.60	Mar. 18	51.65	Aug. 2, 1941	58.26
May 19	b 50.60	Aug. 29	51.78	Aug. 7, 1942	59.55
June 17	49.60	Dec. 21	b 51.52	Aug. 9, 1943	61.65
July 15	b 49.60	Mar. 18, 1933	50.95	July 10, 1944	61.60
Aug. 26	50.15	Sept. 21	51.30	Aug. 14	61.92
Sept. 25	b 50.30	Aug. 27, 1934	51.85	July 23, 1945	62.41
Nov. 4	49.40	Mar. 13, 1935	56.80	July 12, 1946	64.99
Dec. 11	b 49.35	July 31,	55.10	July 23, 1947	66.98
Feb. 4, 1931	b 49.55	Jan. 26, 1936	51.90	Aug. 9, 1948	67.95
Mar. 4	b 59.30	Aug. 26,	57.20	Sept. 16	68.98
Apr. 25	52.05	July 14, 1937	55.63	Aug. 11, 1949	70.06
June 8	53.80	Aug. 16	55.38	Aug. 16, 1950	80.44
July 3	48.70	Jan. 12, 1938	57.13	Sept. 12, 1951	77.20
Oct. 2	48.50	Aug. 24	56.01	Aug. 20, 1952	82.85
Nov. 6	50.20				

(continued on next page)

## WATER-LEVEL MEASUREMENTS IN ZAVALA COUNTY--CONTINUED

Date	Water level	Date	Water level	Date	Water level
------	-------------	------	-------------	------	-------------

M-6-19.--continued

Sept. 10, 1953	89.15	Oct. 12, 1954	92.22	Sept. 20, 1956	98.69
Oct. 6, 1954	92.84	Sept. 21, 1955	95.70		

M-6-19a. Lat. 28°40', long. 100°02'. Depth 163 feet, diameter 6 inches, casing slotted 153-163.

Sept. 10, 1953	96.82	Oct. 12, 1954	101.95	Sept. 20, 1956	128.40
Oct. 6, 1954	103.34	Sept. 21, 1955	113.23		

M-9-1. Lat. 28°39', long. 100°00'. Depth 335 feet, diameter 6 inches, cased to 60. Land-surface datum is 632.8 feet above msl.

Feb. 6, 1928	45.20	Nov. 6, 1931	57.15	Aug. 14, 1939	70.61
Dec. 18, 1929	58.20	Dec. 4	59.75	Aug. 2, 1940	62.78
Jan. 16, 1930	61.20	Jan. 7, 1932	56.40	Aug. 2, 1941	64.44
Feb. 19	59.80	Feb. 11	63.70	Aug. 7, 1942	71.59
Mar. 17	60.80	Mar. 18	61.15	Aug. 7, 1943	72.12
Apr. 16	70.70	July 6	57.10	Dec. 19	68.23
May 19	57.00	Aug. 29	55.85	July 10, 1944	68.43
June 17	54.30	Dec. 21,	56.45	Aug. 14	69.44
July 15	53.75	Mar. 18, 1933	56.60	July 23, 1945	75.49
Aug. 26	55.25	Sept. 21	54.75	July 23, 1947	79.54
Sept. 25	57.25	Aug. 27, 1934	64.10	Aug. 9, 1948	92.14
Nov. 4	52.65	Aug. 26, 1936	63.71	Sept. 15	86.95
Dec. 11	51.25	July 14, 1937	60.05	Aug. 10, 1949	86.32
Mar. 4, 1931	51.50	Aug. 16	67.48	Aug. 16, 1950	96.29
Apr. 25	53.35	Aug. 24, 1938	66.78	Sept. 12, 1951	121.76
July 2	50.65	Apr. 6, 1939	77.66		

M-9-3. Lat. 28°39', long. 100°00'. Depth 432 feet, diameter 8 inches.

Oct. 6, 1954	146.40	Sept. 21, 1955	154.98	Sept. 20, 1956	167.21
--------------	--------	----------------	--------	----------------	--------

## WATER-LEVEL MEASUREMENTS IN ZAVALA COUNTY--CONTINUED

Date	Water level	Date	Water level	Date	Water level
------	-------------	------	-------------	------	-------------

M-9-5. Lat. 28°38', long. 100°02'. Depth 100 feet, diameter 6 inches.

Feb. 4, 1930	76.0	Sept. 20, 1955	84.87	Sept. 20, 1956	82.55
--------------	------	----------------	-------	----------------	-------

N-1-17. Lat. 28°57', long. 99°55'. Depth 134 feet, diameter 8 inches, cased to 134. Land-surface datum is 771.2 feet above msl.

Jan. 27, 1930	126.10	Oct. 30, 1930	124.45	July 7, 1932	126.50
Feb. 22	125.00	Dec. 18	126.20	Aug. 28	126.77
Apr. 18	126.50	Feb. 11, 1931	125.35	Dec. 21	126.92
May 20	125.60	June 9	125.60	Mar. 24, 1933	127.90
June 20	125.20	July 6	124.20	Sept. 21	127.90
July 16	124.80	Jan. 8, 1932	126.90	Jan. 22, 1936	137.18
Aug. 25	124.50	Feb. 10	127.50	Aug. 24	128.81
Sept. 29	124.20	Mar. 23	127.10	July 21, 1939	131.97

N-1-24. Lat. 28°57', long. 99°52'. Depth 350 feet, diameter 12 inches. Land-surface datum is 753.7 feet above msl.

Dec. 23, 1929	120.20	Aug. 28, 1932	117.35	Aug. 14, 1943	133.43
Feb. 22, 1930	122.80	Dec. 21	123.50	Dec. 18	129.39
Mar. 26	120.80	Mar. 21, 1933	119.50	July 6, 1944	130.88
Apr. 18	120.50	Mar. 15, 1935	130.55	Aug. 9,	132.12
May 20	119.10	July 27	123.80	July 21, 1945	133.58
June 20	117.85	Jan. 22, 1936	128.52	July 11, 1946	141.20
July 16	116.20	Aug. 24	122.42	July 24, 1947	159.74
Aug. 25	116.00	July 9, 1937	122.72	Aug. 3, 1948	177.30
Sept. 30	117.45	Aug. 12	125.58	Sept. 15	168.70
Dec. 18	121.60	Jan. 10, 1938	125.78	Aug. 10, 1949	168.81
Feb. 11, 1931	118.30	Aug. 25	121.33	Aug. 17, 1950	194.19
June 9	116.30	Apr. 9, 1939	126.06	Sept. 17, 1951	208.55
July 6	114.70	July 21	125.32	Aug. 22, 1952	238.06
Oct. 15	117.60	Aug. 21	126.54	Sept. 11, 1953	226.85
Jan. 8, 1932	126.60	July 31, 1940	122.99	Oct. 12, 1954	218.31
Feb. 10	126.10	Aug. 6, 1941	123.83	Sept. 22, 1955	227.33
July 7	118.80	Aug. 6, 1942	126.05	Sept. 18, 1956	246 ±

## WATER-LEVEL MEASUREMENTS IN ZAVALA COUNTY--CONTINUED

Date	Water level	Date	Water level	Date	Water level
------	-------------	------	-------------	------	-------------

N-1-34. Lat. 28°59', long. 99°50'. Depth 295 feet, diameter 12 inches.

Sept. 17, 1948	153.72	Aug. 22, 1952	192.05	Sept. 22, 1955	217.6
Aug. 17, 1950	176.72	Oct. 12, 1954	204.2	Sept. 18, 1956	227.0±
Sept. 17, 1951	175.40				

N-1-38. Lat. 28°57', long. 99°50'. Depth 380 feet, diameter 10 inches, cased to 376.

Oct. 4, 1954	246.14	Sept. 22, 1955	254.75	Sept. 18, 1956	275.6±
Oct. 12	233.48				

N-1-39. Lat. 28°56', long. 99°58'. Depth 300 feet, diameter 6 inches. Land-surface datum is 731.5 feet above msl.

Jan. 25, 1930	74.40	Oct. 15, 1931	75.00	Sept. 16, 1948	81.99
Feb. 22	74.70	Jan. 8, 1932	78.20	Dec. 2, 1949	95.16
July 16	75.00	Feb. 10	80.20	Aug. 17, 1950	101.91
Aug. 25	77.75	Mar. 23	75.90	Sept. 17, 1951	86.06
Sept. 29	76.75	Mar. 24, 1933	74.93	Aug. 21, 1952	88.46
Dec. 18	77.40	July 12, 1946	78.55	Sept. 11, 1953	90.94
Feb. 11, 1931	78.10	July 25, 1947	79.79	Sept. 22, 1955	90.84
July 6	76.30	Aug. 10, 1948	83.26	Sept. 18, 1956	92.58

N-1-40. Lat. 28°55', long. 99°52'. Depth 300 feet, diameter 10 inches. Land-surface datum is 725.0 feet above msl.

Jan. 4, 1930	122.30	July 6, 1931	103.25	July 9, 1937	110.51
Feb. 22	115.70	Feb. 10, 1932	119.85	Aug. 12	105.36
May 20	113.50	Mar. 23	116.00	Jan. 10, 1938	109.44
June 20	111.40	July 7	109.50	Aug. 25	101.44
July 16	119.50	Aug. 28	106.95	July 21, 1939	112.98
Aug. 25	118.50	Dec. 21	114.83	July 31, 1940	103.55
Sept. 30	108.65	Mar. 24, 1933	109.90	Aug. 16, 1941	104.02
Dec. 18	113.75	Sept. 21	104.40	Aug. 6, 1942	107.87
Feb. 11, 1931	111.50	Mar. 15, 1935	123.90	Aug. 14, 1943	115.58
June 9	105.00	July 27	114.10	July 6, 1944	114.12
(continued on next page)					

## WATER-LEVEL MEASUREMENTS IN ZAVALA COUNTY--CONTINUED

Date	Water level	Date	Water level	Date	Water level
------	-------------	------	-------------	------	-------------

N-1-40--continued.

Aug. 9, 1944	114.63	Sept. 16, 1948	166.48	Aug. 21, 1952	255.20
July 11, 1946	123.82	Aug. 10, 1949	162.83	Sept. 11, 1953	250.16
July 24, 1947	146.68	Aug. 17, 1950	183.29	Oct. 12	236.55
Sept. 16, 1948	166.48	Sept. 17, 1951	219.82		

N-1-43. Lat. 28°56', long. 99°52'. Depth 230 feet, diameter 8 inches.

Aug. 22, 1952	109.20	Sept. 22, 1955	111.33	Sept. 18, 1956	111.17
Oct. 12, 1954	110.12				

N-1-58. Lat. 28°53', long. 99°59'. Depth 202 feet, diameter 6 inches, cased to 202. Land-surface datum is 677.7 feet above msl.

Feb. 6, 1930	61.30	May 20, 1930	65.65	July 16, 1930	64.65
Mar. 31	64.40	June 20	65.75	Feb. 11, 1931	61.25
Apr. 18	65.55				

N-1-67. Lat. 28°50', long. 99°50'. Depth 600 feet, diameter 10 inches.

Nov. 22, 1929	97.5	July 16, 1930	123.3	Jan. 8, 1932	103.7
Dec. 23	97.4	Sept. 29	108.3	Feb. 15	159.2
Jan. 27, 1930	98.5	Apr. 3, 1931	108.3	Mar. 23	102.9
Feb. 22	124.0				

N-1-73. Lat. 28°56', long. 99°55'. Depth 483 feet, diameter 6 inches.

July 12, 1946	159.29	Dec. 27, 1948	190.40	June 15, 1949	177.30
July 25, 1947	169.72	Jan. 20, 1949	189.86	July 17,	178.46
Sept. 16, 1948	187.38	Mar. 7	183.60	Aug. 10	186.85
Oct. 12	188.32	Apr. 18	181.98	Sept. 22	187.48
Nov. 10	188.74	May 10	170.30	Oct. 29	183.70
		(continued on next page)			



## WATER-LEVEL MEASUREMENTS IN ZAVALA COUNTY--CONTINUED

Date	Water level	Date	Water level	Date	Water level
------	-------------	------	-------------	------	-------------

N-1-73--continued.

Dec. 2, 1949	196.81	June 25, 1952	240.37	Aug. 28, 1954	241.3
Jan. 25, 1950	184.35	July 24	246.00	Sept. 28	242.4
Mar. 9	189.89	Aug. 21	243.95	Oct. 12	238.0
Apr. 6	197.66	Aug. 22	242.55	Oct. 25	243.7
May 2	192.33	Sept. 25	249.50	Nov. 23	248.2
June 7	187.22	Oct. 23	251.20	Dec. 21	249.0
July 10	193.47	Nov. 24	244.28	Jan. 23, 1955	249.58
Aug. 13	197.77	Dec. 20	243.07	Feb. 25	251.37
Sept. 5	190.58	Jan. 23, 1953	237.00	Mar. 23	256.12
Oct. 3	191.13	Feb. 24	236.53	Apr. 23	271.71
Nov. 2	215.09	Mar. 24	246.69	May 24	257.20
Dec. 8	212.24	Apr. 23	264.35	June 24	268.44
Jan. 13, 1951	220.64	May 25	268.59	July 24	272.57
Feb. 11	221.32	June 24	272.89	Aug. 25	260.64
Apr. 4	215.35	July 23	263.82	Sept. 22	251.23
May 4	222.58	Aug. 26	267.08	Oct. 25	255.42
June 1	211.41	Sept. 11	248.13	Nov. 22	249.73
July 10	223.66	Oct. 26	240.78	Dec. 20	248.06
July 31	234.04	Nov. 24	238.83	Jan. 22, 1956	250.28
Sept. 17	224.31	Dec. 20	239.05	Feb. 21	251.82
Oct. 24	233.07	Jan. 26, 1954	240.4	Mar. 23	259.61
Nov. 21	222.24	Feb. 24	241.4	Apr. 24	268.50
Dec. 21	228.56	Mar. 23	249.3	May 24	271.36
Jan. 24, 1952	225.83	Apr. 27	241.7	June 23	272.49
Feb. 22	226.32	May 26	242.6	July 24	278.34
Mar. 26	229.62	June 24	239.1	Aug. 24	272.92
Apr. 21	225.99	July 24	243.4	Sept. 21	262.75
May 26	235.53				

N-1-83. Lat. 28°56', long. 99°51'. Depth 350 feet diameter 11 inches.

Sept. 17, 1948	93.41	June 15, 1949	92.71	Apr. 6, 1950	93.43
Oct. 12	93.07	July 17	93.41	May 2	91.45
Nov. 10	92.80	Aug. 10	92.68	June 7	92.77
Dec. 27	92.37	Sept. 22	93.25	July 10	92.00
Jan. 20, 1949	92.76	Oct. 29	91.68	Aug. 3	92.21
Mar. 7	92.41	Dec. 2,	92.50	Sept. 5	91.88
Apr. 18	93.28	Jan. 25, 1950	92.90	Oct. 3	91.44
May 10	91.83	Mar. 9	95.13	Nov. 2	94.04
(continued on next page)					

## WATER-LEVEL MEASUREMENTS IN ZAVALA COUNTY--CONTINUED

Date	Water level	Date	Water level	Date	Water level
------	-------------	------	-------------	------	-------------

N-1-83--continued.

Dec. 8, 1950	91.02	Dec. 21, 1952	91.20	Oct. 12, 1954	95.46
Jan. 13, 1951	90.76	Jan. 23, 1953	92.62	Oct. 25	95.76
Feb. 11	91.10	Feb. 24	92.07	Nov. 23	96.04
Apr. 4	92.24	Mar. 24	92.66	Dec. 21	95.60
May 4	96.95	Apr. 23	92.39	Jan. 23, 1955	96.13
July 10	98.87	May 25	92.57	Feb. 25	97.40
July 31	97.53	June 24	93.30	Mar. 23	98.4±
Sept. 17	95.66	July 23	94.72	Apr. 23	100.2±
Oct. 24	90.66	Aug. 26	94.04	May 24	89.63
Nov. 21	90.26	Sept. 11	94.31	June 24	90.23
Dec. 21	89.85	Oct. 26	93.98	July 24	92.96
Jan. 24, 1952	90.30	Nov. 25	93.86	Aug. 28	92.70
Feb. 22	90.79	Dec. 20	94.19	Sept. 22	96.68
Mar. 26	91.03	Jan. 26, 1954	94.62	Oct. 25	97.52
Apr. 21	89.94	Feb. 24	94.72	Nov. 22	96.29
May 26	90.04	Mar. 23	96.22	Dec. 20	95.34
June 25	90.30	Apr. 27	94.54	Jan. 22, 1956	98.10
July 24	90.70	May 26	94.64	Feb. 21	96.63
Aug. 22	90.48	June 24	92.47	Mar. 23	96.83
Sept. 25	90.85	July 24	91.04	Apr. 24	97.51
Oct. 23	91.32	Aug. 28	92.70	May 24	98.82
Nov. 24	90.89	Sept. 28	93.33		

N-1-92. Lat. 28°56', long. 99°57'. Depth 335 feet, diameter 6 inches.

July 25, 1947	83.06	Sept. 17, 1951	117.62	Oct. 12, 1954	130.11
Sept. 16, 1948	95.05	Aug. 21, 1952	125.37	Sept. 22, 1955	138.23
Aug. 10, 1949	91.34	Sept. 11, 1953	135.88	Sept. 18, 1956	148.0
Aug. 17, 1950	100.54	Oct. 4, 1954	130.70		

N-2-4. Lat. 28°59', long. 99°49'. Depth 338 feet, diameter 12 inches.  
Land-surface datum is 761.0 feet above msl.

Sept. 17, 1948	146.75	Sept. 17, 1951	171.34	Sept. 11, 1953	196.17
Aug. 10, 1949	145.34	Aug. 22, 1952	184.81		

## WATER-LEVEL MEASUREMENTS IN ZAVALA COUNTY--CONTINUED

Date	Water level	Date	Water level	Date	Water level
------	-------------	------	-------------	------	-------------

N-2-27. Lat. 28°55', long. 99°47'. Depth 52 feet, diameter 12 inches.

Sept.17, 1948	27.49	Aug. 22, 1952	34.75	Oct. 12, 1954	27.56
Sept.10, 1949	23.2	Sept.11, 1953	33.99	Mar. 23, 1955	33.50
Sept.17, 1951	35.12	Oct. 4, 1954	27.50	Sept.22	37.10
				Sept.18, 1956	36.29

N-2-34. Lat. 28°57', long.99°50'. Depth 460 feet, diameter 10 inches.

Sept.17, 1948	177.18	Sept.17, 1951	218.58	Sept.22, 1955	275.78
Aug. 10, 1949	177.24	Sept.11, 1953	253.48	Sept.18, 1956	298.43
Aug. 17, 1950	199.7	Oct. 4, 1954	261.2		

N-3-4. Lat. 28°57', long. 99°37'. Depth 45 feet, diameter 6 inches.  
Land-surface datum is 713.4 feet above msl.

Feb. 9, 1930	43.2	Jan. 24, 1946	44.08	Mar. 5, 1946	41.85
--------------	------	---------------	-------	--------------	-------

N-3-7. Lat. 28°55', long. 99°36'. Depth 60 feet, diameter 10 inches.  
Land-surface datum is 684.9 feet above msl.

Jan. 23, 1946	41.32	Aug. 8, 1946	42.26	Mar. 4, 1947	45.26
---------------	-------	--------------	-------	--------------	-------

N-3-9. Lat 28°57',long. 99°39'. Diameter 9 inches.  
Land-surface datum is 727.5 feet above msl.

Jan. 16, 1946	11.55	Mar. 5, 1947	10.39		
---------------	-------	--------------	-------	--	--

N-3-11. Lat. 28°59', long. 99°38'. Depth 60 feet, diameter 8 inches.  
Land-surface datum is 723.6 feet above msl.

Jan. 16,1946	42.20	Aug. 7, 1946	42.85	Mar. 5, 1947	40.16
--------------	-------	--------------	-------	--------------	-------

## WATER-LEVEL MEASUREMENTS IN ZAVALA COUNTY--CONTINUED

Date	Water level	Date	Water level	Date	Water level
------	-------------	------	-------------	------	-------------

N-3-13. Lat. 28°59', long. 99°37'. Depth 45 feet, diameter 6 inches.  
Land-surface datum is 730.3 feet above msl.

Jan. 16, 1946	37.43	Aug. 7, 1946	39.63	Mar. 4, 1947	34.58
---------------	-------	--------------	-------	--------------	-------

N-3-14. Lat. 28°59', long. 99°37'. Depth 44 feet, diameter 6 inches.  
Land-surface datum is 726.5 feet above msl.

Jan. 16, 1946	38.07	Aug. 7, 1946	41.26	Mar. 5, 1947	34.40
---------------	-------	--------------	-------	--------------	-------

N-3-15. Lat. 28°59', long. 99°37'. Depth 46 feet, diameter 36 inches.  
Land-surface datum is 727.4 feet above msl.

Jan. 16, 1946	41.91	Aug. 7, 1946	44.43	Mar. 4, 1947	38.30
---------------	-------	--------------	-------	--------------	-------

N-3-16. Lat. 28°59', long. 99°37'. Diameter 6 inches.  
Land-surface datum is 727.5 feet above msl.

Jan. 16, 1946	38.15	Aug. 7, 1946	42.08	Mar. 5, 1947	37.01
---------------	-------	--------------	-------	--------------	-------

N-3-17. Lat. 28°58', long. 99°37'. Depth 60 feet, diameter 8 inches.  
Land-surface datum is 720.9 feet above msl.

Jan. 16, 1946	42.10	Aug. 7, 1946	42.87	Mar. 5, 1947	39.04
---------------	-------	--------------	-------	--------------	-------

N-3-19. Lat. 28°58', long. 99°37'. Depth 60 feet, diameter 10 inches.  
Land-surface datum is 723.4 feet above msl.

Jan. 16, 1946	45.16	Aug. 7, 1946	47.29	Mar. 4, 1947	41.34
---------------	-------	--------------	-------	--------------	-------

N-3-20. Lat. 28°57', long. 99°36'. Depth 54 feet, diameter 8 inches.  
Land-surface datum is 715.3 feet above msl.

Jan. 24, 1946	45.22	Aug. 7, 1946	46.68	Mar. 4, 1947	42.18
---------------	-------	--------------	-------	--------------	-------

## WATER-LEVEL MEASUREMENTS IN ZAVALA COUNTY--CONTINUED

Date	Water level	Date	Water level	Date	Water level
------	-------------	------	-------------	------	-------------

N-3-21. Lat. 28°57', long. 99°36'. Depth 59 feet, diameter 8 inches.  
Land-surface datum is 717.3 feet above msl.

Jan. 24, 1946	45.61	Aug. 7, 1946	46.97	Mar. 4, 1947	42.69
---------------	-------	--------------	-------	--------------	-------

N-3-22. Lat. 28°57', long. 99°36'. Depth 48 feet, diameter 6 inches.  
Land-surface datum is 716.0 feet above msl.

Jan. 24, 1946	44.74	Aug. 7, 1946	46.08	Mar. 5, 1947	41.85
---------------	-------	--------------	-------	--------------	-------

N-3-23. Lat. 28°57', long. 99°37'. Depth 52 feet, diameter 10 inches.  
Land-surface datum 710.8 feet above msl.

Jan. 23, 1946	44.60	Aug. 8, 1946	45.44	Mar. 5, 1947	43.31
---------------	-------	--------------	-------	--------------	-------

N-3-25. Lat. 28°56', long. 99°38'. Depth 46 feet, diameter 8 inches.  
Land-surface datum 701.2 feet above msl.

Jan. 23, 1946	39.35	Aug. 7, 1946	40.04	Mar. 4, 1947	39.05
---------------	-------	--------------	-------	--------------	-------

N-3-26. Lat. 28°56', long. 99°37'. Depth 44 feet, diameter 48 inches.  
Dug well. Land-surface datum is 703.6 feet above msl.

Jan. 24, 1946	43.44	Mar. 4, 1947	42.75		
---------------	-------	--------------	-------	--	--

N-3-27. Lat. 28°56', long. 99°37'. Depth 55 feet, diameter 6 inches.  
Land-surface datum is 703.9 feet above msl.

Jan. 23, 1946	44.25	Aug. 7, 1946	45.08	Mar. 4, 1947	43.26
---------------	-------	--------------	-------	--------------	-------

## WATER-LEVEL MEASUREMENTS IN ZAVALA COUNTY--CONTINUED

Date	Water level	Date	Water level	Date	Water level
------	-------------	------	-------------	------	-------------

N-3-32. Lat. 28°57', long. 99°36'. Depth 84 feet, diameter 8 inches.  
Land-surface datum is 711.9 feet above msl.

Jan. 24, 1946	35.37	Aug. 7, 1946	37.31	Mar. 4, 1947	35.27
---------------	-------	--------------	-------	--------------	-------

N-3-33. Lat 28°57', long. 99°36'. Depth 51 feet, diameter 48 inches.  
Land-surface datum is 715.1 feet above msl.

Jan. 17, 1946	40.90	Aug. 7, 1946	43.28	Mar. 4, 1947	44.35
---------------	-------	--------------	-------	--------------	-------

N-3-35. Lat. 28°56', long. 99°36'. Diameter 48 inches. Dug well.  
Land-surface datum is 706.3 feet above msl.

Jan. 23, 1946	53.85	Aug. 8, 1946	54.99	Mar. 4, 1947	54.48
---------------	-------	--------------	-------	--------------	-------

N-3-36. Lat. 28°56', long. 99°36'. Depth 55 feet, diameter 48 inches.  
Dug well. Land-surface datum is 705.1 feet above msl.

Jan. 23, 1946	53.92	Aug. 8, 1946	54.70	Mar. 4, 1947	55.35
---------------	-------	--------------	-------	--------------	-------

N-3-37. Lat. 28°56', long. 99°36'. Depth 54 feet, diameter 48 inches.  
Dug well. Land-surface datum is 703.7 feet above msl.

Jan. 23, 1946	53.28	Aug. 8, 1946	53.93	Mar. 4, 1947	55.14
---------------	-------	--------------	-------	--------------	-------

N-3-44. Lat. 28°55', long. 99°36'. Depth 60 feet.  
Land-surface datum is 694.7 feet above msl.

Jan. 17, 1946	48.01	Aug. 8, 1946	48.55	Mar. 4, 1947	51.33
---------------	-------	--------------	-------	--------------	-------



## WATER-LEVEL MEASUREMENTS IN ZAVALA COUNTY--CONTINUED

Date	Water level	Date	Water level	Date	Water level
------	-------------	------	-------------	------	-------------

N-3-45. Lat. 28°55', long. 99°35'. Depth 58 feet, diameter 6 inches.  
Land-surface datum is 683.2 feet above msl.

Jan. 23, 1946	41.45	Aug. 8, 1946	42.91	Mar. 4, 1947	44.85
---------------	-------	--------------	-------	--------------	-------

N-3-47. Lat. 28°55', long. 99°36'. Depth 60 feet, diameter 6 inches.  
Land-surface datum is 685.7 feet above msl.

Jan. 17, 1946	43.74	Aug. 8, 1946	43.72	Mar. 4, 1947	51.89
---------------	-------	--------------	-------	--------------	-------

N-3-56. Lat. 28°54', long. 99°35'. Diameter 6 inches.  
Land-surface datum is 679.7 feet above msl.

Jan. 23, 1946	37.20	Aug. 8, 1946	39.32	Mar. 4, 1947	40.72
---------------	-------	--------------	-------	--------------	-------

N-3-59. Lat. 28°53', long. 99°34'. Depth 56 feet, diameter 8 inches.

Jan. 30, 1946	30.30	Aug. 8, 1946	33.32	Mar. 4, 1947	33.15
---------------	-------	--------------	-------	--------------	-------

N-3-60. Lat. 28°53', long. 99°34'. Depth 47 feet, diameter 6 inches.

Jan. 30, 1946	26.51	Aug. 8, 1946	29.45	Mar. 4, 1947	29.31
---------------	-------	--------------	-------	--------------	-------

N-3-61. Lat. 28°52', long. 99°34'. Depth 26 feet, diameter 6 inches.

Jan. 30, 1946	19.75	Aug. 8, 1946	22.89	Mar. 5, 1947	18.62
---------------	-------	--------------	-------	--------------	-------

N-3-62. Lat. 28°52', long. 99°33'. Depth 237 feet, diameter 8 inches.

Jan. 30, 1946	23.50	Mar. 5, 1947	27.15		
---------------	-------	--------------	-------	--	--



## WATER-LEVEL MEASUREMENTS IN ZAVALA COUNTY--CONTINUED

Date	Water level	Date	Water level	Date	Water level
------	-------------	------	-------------	------	-------------

N-3-63. Lat. 28°52', long. 99°32'. Depth 33 feet, diameter 8 inches.

Jan. 30, 1946	21.20	Aug. 8, 1946	23.41	Mar. 5, 1947	22.61
---------------	-------	--------------	-------	--------------	-------

N-3-64. Lat. 28°51', long. 99°31'. Depth 52 feet, diameter 8 inches.

Jan. 30, 1946	44.76	Mar. 5, 1947	59.76		
---------------	-------	--------------	-------	--	--

N-3-86. Lat. 28°55', long. 99°36'. Depth 76 feet, diameter 12 inches.  
Monthly highest reading from recorder graph.

June 8, 1954	56.15	Mar. 31, 1955	55.71	Dec. 16, 1955	55.16
July 12	56.25	Apr. 1	55.72	Jan. 14, 1956	55.15
Aug. 31	55.89	May 29	55.92	Feb. 1	55.20
Sept. 27	55.53	June 5	55.89	Mar. 2	55.23
Oct. 19	55.52	July 27	55.98	Apr. 30	55.21
Nov. 26	55.56	Aug. 26	55.91	May 1	55.24
Dec. 3	55.56	Sept. 1	55.92	June 1	55.32
Jan. 3, 1955	55.80	Oct. 30	55.46	July 13	55.64
Feb. 27	55.87	Nov. 29	55.21	Aug. 23	55.58

N-4-8. Lat. 28°46', long. 99°51'. Depth 923 feet, diameter 8 inches cased to 727.

Dec. 23, 1929	125.00	June 20, 1930	134.20	Oct. 30, 1930	128.25
Jan. 21, 1930	122.30	July 16	128.00	Aug. 26, 1932	119.00
Feb. 20	164.30	Aug. 20	127.00	Dec. 19	143.15
Mar. 25	159.50	Sept. 29	140.70	Mar. 24, 1933	130.15
May 24	144.30				

N-4-28. Lat. 28°46', long. 99°50'. Depth 950 feet, diameter 12 inches, cased to 950. Land-surface datum is 629.8 feet above msl.

Oct. 3, 1929	122.0	Sept. 17, 1948	178.28	Oct. 14, 1954	299.0
--------------	-------	----------------	--------	---------------	-------

## WATER-LEVEL MEASUREMENTS IN ZAVALA COUNTY--CONTINUED

Date	Water level	Date	Water level	Date	Water level
------	-------------	------	-------------	------	-------------

N-4-41. Lat. 28°40', long. 99°57'. Depth 400 feet, diameter 10 inches.  
Land-surface datum is 577.8 feet above msl.

Oct. 30, 1929	17.85	Nov. 4, 1930	18.15	Mar. 18, 1932	30.60
Nov. 22	24.40	Mar. 4, 1931	16.80	July 6	21.70
Dec. 18	33.95	Apr. 25	22.35	Aug. 29	18.72
Jan. 16, 1930	35.70	June 8	11.80	Dec. 22	26.37
Apr. 16	53.70	July 9	9.90	Mar. 18, 1933	19.50
May 10	34.60	Oct. 2	14.10	Sept. 21	14.00
July 15	20.50	Nov. 6	37.70	Aug. 27, 1934	25.30
Aug. 25	22.45	Jan. 7, 1932	29.55	Mar. 13, 1935	49.95
Sept. 25	27.70				

N-4-46. Lat. 28°42', long. 99°52'. Depth 948 feet, diameter 10 inches,  
cased to 810. Land-surface datum is 596.6 feet above msl.

Dec. 14, 1928	91.0	Aug. 16, 1950	149.9	Sept. 10, 1953	259.59
Sept. 17, 1948	141.71	Sept. 13, 1951	222.17	Sept. 21, 1955	276.1
Aug. 10, 1949	123.72				

N-5-4. Lat. 28°47', long. 99°47'. Depth 987 feet, diameter 6 inches,  
cased to 987. Land-surface datum is 615.4 feet above msl.

Nov. 22, 1929	72.60	Apr. 19, 1930	79.90	Sept. 25, 1930	71.50
Dec. 18	73.90	May 24	69.70	Oct. 30	57.20
Jan. 21, 1930	74.50	June 20	62.10	Dec. 9	62.15
Feb. 20	83.85	July 17	56.65	Jan. 8, 1931	79.45
Mar. 25	81.55	Aug. 20	54.75	Feb. 4	59.40

N-5-7. Lat. 28°48', long. 99°46'. Depth 1,001 feet, diameter 8 inches.  
Land-surface datum is 624.0 feet above msl.

Nov. 27, 1929	66.84	July 24, 1931	43.95	Dec. 19, 1932	74.65
Aug. 30, 1930	56.75	Sept. 28	53.30	Mar. 22, 1933	58.50
Feb. 4, 1931	63.40	Jan. 4, 1932	79.75	Sept. 15,	46.10
Apr. 23	57.45	Feb. 2	86.00	Aug. 29, 1934	58.40
May 23	53.45	May 5	70.85	Mar. 7, 1935	92.10
June 24	48.20	Aug. 26	52.50		

## WATER-LEVEL MEASUREMENTS IN ZAVALA COUNTY--CONTINUED

Date	Water level	Date	Water level	Date	Water level
------	-------------	------	-------------	------	-------------

N-5-15. Lat. 28°46', long. 99°47'. Diameter 8 inches. Land-surface datum is 607.5 feet above msl.

Nov. 23, 1929	85.80	Oct. 30, 1930	61.90	Dec. 1, 1931	114.60
Dec. 18	89.60	Dec. 9	70.75	Jan. 4, 1932	84.90
Jan. 21, 1930	90.40	Jan. 8, 1931	88.30	Feb. 2	101.20
Feb. 20	96.80	Feb. 4	63.60	Mar. 17	81.60
Mar. 25	92.25	Mar. 2	53.95	May 5	77.10
Apr. 19	85.60	Apr. 23	61.75	Aug. 26	50.65
May 24	76.10	May 23	49.20	Dec. 19	81.10
June 20	66.85	June 24	45.05	Mar. 17, 1933	56.60
July 17	58.95	July 24	39.80	Sept. 15	44.35
Aug. 20	61.00	Sept. 28	56.85	Aug. 29, 1934	58.38
Sept. 25	77.95	Nov. 2	100.60		

N-5-20. Lat. 28°45', long. 99°47'. Diameter 8 inches. Land-surface datum is 593.4 feet above msl.

Nov. 23, 1929	77.10	Apr. 19, 1930	90.85	Sept. 25, 1930	68.45
Dec. 18	81.15	May 24	68.05	Oct. 30	54.20
Jan. 21, 1930	85.50	June 20	58.50	Dec. 9	62.90
Feb. 20	98.80	July 17	52.45	Jan. 8, 1931	81.70
Mar. 25	91.15	Aug. 20	55.95	Feb. 4	55.00

N-5-21. Lat. 28°46', long. 99°46'. Depth 1,000 feet, diameter 8 inches.

Sept. 13, 1948	142.96	June 16, 1949	131.01	May 2, 1950	187.85
Oct. 12	170.14	July 17	151.10	June 7	147.45
Nov. 10	185.60	Aug. 10	135.07	July 10	180.12
Dec. 27	200.82	Sept. 22	161.46	Sept. 15	182.19
Jan. 20, 1949	190.80	Oct. 29	152.70	Oct. 3	200.21
Mar. 7	164.40	Jan. 25, 1950	155.53	Jan. 13, 1951	232.84
Apr. 18	144.38	Mar. 9	188.45	Feb. 11	286.15
May 10	125.81				

## WATER-LEVEL MEASUREMENTS IN ZAVALA COUNTY--CONTINUED

Date	Water level	Date	Water level	Date	Water level
------	-------------	------	-------------	------	-------------

N-5-30. Lat. 28°42', long. 99°48'. Depth 940 feet, diameter 12 inches.

July 24, 1947	102.07	Aug. 11, 1949	127.13		
Sept. 13, 1948	143.30	Sept. 17, 1951	221.62		

N-5-31. Lat. 28°43', long. 99°48'. Depth 930 feet, diameter 8 inches.  
Land-surface datum is 582.9 feet above msl.

Nov. 25, 1929	78.25	Apr. 23, 1931	53.30	Aug. 1, 1935	56.30
Dec. 18	80.55	May 23	38.50	Jan. 25, 1936	84.65
Jan. 21, 1930	88.80	June 24	35.45	Aug. 23	54.30
Feb. 20	111.90	July 24	28.45	July 12, 1937	50.20
Mar. 25	91.60	Sept. 28	42.80	Aug. 17	50.01
Apr. 19	95.55	Nov. 3	113.30	Jan. 14, 1938	54.84
May 24	68.70	Dec. 1	119.15	Aug. 18	43.06
June 20	66.30	Jan. 4, 1932	83.30	Apr. 7, 1939	68.08
July 17	50.60	Feb. 2	89.80	July 20	56.86
Aug. 20	50.60	Mar. 17	72.00	Aug. 16	50.83
Sept. 25	68.30	May 5	67.00	Aug. 1, 1940	37.02
Oct. 30	52.30	Aug. 26	42.30	Aug. 2, 1941	32.43
Dec. 9	60.20	Dec. 19	73.70	Aug. 11, 1942	53.26
Jan. 8, 1931	80.95	Mar. 17, 1933	50.90	Aug. 11, 1943	54.45
Feb. 4	52.20	Sept. 15	37.55	Dec. 20	59.54
Mar. 2	43.20	Mar. 7, 1935	112.15	July 6, 1944	13.12

N-5-39. Lat. 28°42', long. 99°48'. Depth 940 feet, diameter 12 to 8 inches,  
cased to 940, perforations 698-940. Land-surface datum is 583.4 feet above  
msl.

Nov. 26, 1929	74.58	Jan. 8, 1931	89.90	Dec. 19, 1932	81.65
Dec. 18	88.55	Feb. 4	59.30	Mar. 17, 1933	59.10
Mar. 25, 1930	101.90	Mar. 2	49.50	Sept. 15	45.65
Apr. 19	105.90	Apr. 23	60.10	Aug. 29, 1934	56.10
May 24	75.90	May 23	44.80	Mar. 7, 1935	116.10
June 20	63.25	Dec. 1	128.90	Aug. 1	57.60
July 17	58.20	Jan. 4, 1932	85.60	Jan. 25, 1936	90.18
Aug. 20	63.20	Feb. 2	97.15	Aug. 23	61.22
Sept. 25	77.35	Mar. 17	78.70	July 11, 1937	56.44
Oct. 30	59.80	May 5	74.55	Aug. 17	58.02
Dec. 9	67.30	Aug. 26	48.10	Jan. 14, 1938	60.12

(continued on next page)

## WATER-LEVEL MEASUREMENTS IN ZAVALA COUNTY--CONTINUED

Date	Water level	Date	Water level	Date	Water level
------	-------------	------	-------------	------	-------------

N-5-39.--continued

Aug. 18, 1938	49.68	Aug. 11, 1942	59.72	July 11, 1946	93.21
Apr. 7, 1939	76.80	Aug. 11, 1943	73.19	July 24, 1947	105.15
July 20	63.94	Dec. 20	71.98	Aug. 11, 1948	146.33
Aug. 16	59.61	July 6, 1944	67.60	Aug. 11, 1949	129.15
Aug. 1, 1940	40.87	Aug. 9	79.98	Sept. 17, 1951	243.28
Aug. 2, 1941	41.03	July 21, 1945	77.89		

N-5-40. Lat. 28°41', long. 99°47'. Depth 1,070 feet, diameter 12 inches.  
Land-surface datum is 578.7 feet above msl.

Nov. 26, 1929	81.38	Dec. 1, 1931	130.60	July 20, 1939	62.57
Dec. 18	88.85	Jan. 4, 1932	85.00	Aug. 16	55.92
Feb. 20, 1930	122.70	Feb. 2	96.90	Aug. 1, 1940	39.70
Mar. 25	102.50	Mar. 17	75.30	Aug. 2, 1941	38.80
Apr. 19	101.40	May 5	72.65	Aug. 11, 1942	57.88
May 24	74.85	Aug. 26	47.10	Aug. 11, 1943	69.73
June 20	62.80	Dec. 19	81.95	July 6, 1944	65.38
July 17	57.65	Mar. 17, 1933	57.05	Aug. 9	76.54
Aug. 20	61.30	Sept. 15	42.55	July 21, 1945	75.11
Sept. 25	77.10	Aug. 29, 1934	56.50	July 11, 1946	85.79
Oct. 30	58.70	Mar. 7, 1935	116.30	July 24, 1947	102.40
Dec. 9	68.75	Aug. 1	54.90	Sept. 13, 1948	144.09
Jan. 8, 1931	89.10	Aug. 23, 1936	58.33	June 16, 1949	126.10
Feb. 4	58.80	July 11, 1937	54.94	Aug. 10	127.40
Mar. 2	48.75	Aug. 17	55.10	Dec. 3	182.65
Apr. 23	57.75	Jan. 14, 1938	59.24	Aug. 17, 1950	160.7
July 24	33.30	Aug. 18	49.97	Sept. 10, 1953	284.5
Sept. 28	46.35	Apr. 7, 1939	76.10	Oct. 7, 1954	282.9

## WATER-LEVEL MEASUREMENTS IN ZAVALA COUNTY--CONTINUED

Date	Water level	Date	Water level	Date	Water level
------	-------------	------	-------------	------	-------------

N-5-47. Lat. 28°42', long. 99°44'. Diameter 8 inches. Land-surface datum 614.0 feet above msl.

Nov. 26, 1929	105.15	Apr. 23, 1931	83.25	Dec. 19, 1931	114.30
Dec. 18	112.70	May 23	77.75	Mar. 17, 1933	90.10
Jan. 18, 1930	121.60	June 24	71.00	Sept. 15	71.50
Feb. 20	142.50	July 24	66.00	Aug. 29, 1934	84.80
Mar. 25	126.60	Sept. 28	75.60	Aug. 1, 1935	88.15
Apr. 19	116.70	Nov. 3	122.30	Jan. 25, 1936	132.10
May 24	103.20	Dec. 1	143.95	Aug. 23,	86.62
June 20	94.45	Jan. 4, 1932	114.15	July 11, 1937	82.57
July 17	88.70	Feb. 2	123.05	Aug. 17	84.41
Dec. 9	108.50	Mar. 17	103.15	Jan. 14, 1938	90.81
Jan. 8, 1931	115.40	May 5	99.00	Aug. 18	79.64
Mar. 2	82.40	Aug. 26	77.90	Aug. 16, 1939	86.32

N-5-55. Lat. 28°40', long. 99°47'. Depth 1,070 feet, diameter 10 to 6 inches, cased to 1,070, perforations 825-1,070. Land-surface datum is 577.2 feet above msl.

Nov. 27, 1929	81.63	July 24, 1931	35.50	Jan. 14, 1938	61.98
Dec. 18	111.70	Sept. 28	46.05	Aug. 17	48.87
Feb. 20, 1930	120.80	Dec. 1	131.95	Apr. 7, 1939	81.59
Mar. 25	106.40	Jan. 4, 1932	85.55	July 18	62.98
Apr. 19	104.00	Feb. 2	97.15	Aug. 16	58.02
May 24	79.25	Mar. 17	76.95	Aug. 1, 1940	42.55
June 20	66.40	May 5	75.90	Aug. 2, 1941	42.23
July 17	61.00	Aug. 26	50.10	Aug. 11, 1942	61.40
Aug. 20	64.70	Dec. 19	84.86	Aug. 11, 1943	75.43
Sept. 25	79.75	Mar. 17, 1933	59.40	Dec. 20	76.48
Oct. 30	63.70	Sept. 15	44.40	July 7, 1944	71.20
Dec. 9	70.75	Aug. 29, 1934	56.55	Aug. 9	82.37
Jan. 8, 1931	91.30	Mar. 7, 1935	116.60	July 21, 1945	80.28
Feb. 4	61.90	July 20	57.70	July 11, 1946	88.82
Mar. 2	51.55	Jan. 25, 1936	85.85	July 24, 1947	107.50
Apr. 23	60.10	Aug. 25	58.51	Sept. 13, 1948	149.91
May 23	46.50	July 11, 1937	56.16	Aug. 11, 1949	128.27
June 24	42.40	Aug. 17	55.80	Sept. 17, 1951	231.4



## WATER-LEVEL MEASUREMENTS IN ZAVALA COUNTY--CONTINUED

Date	Water level	Date	Water level	Date	Water level
------	-------------	------	-------------	------	-------------

N-5-60. Lat. 28°41', long. 99°45'. Depth 1,000 feet, diameter 13 inches. Land-surface datum is 582.9 feet above msl.

Nov. 16, 1929	81.00	July 24, 1931	38.80	Aug. 2, 1941	41.43
Jan. 21, 1930	109.40	Sept. 28	58.75	July 6, 1944	66.73
Mar. 25	111.20	Mar. 17, 1932	83.25	Aug. 9	76.61
Apr. 19	99.60	May 5	77.30	July 11, 1945	90.33
May 24	81.55	Aug. 26	51.70	July 24, 1947	116.17
June 20	71.15	Dec. 19	95.90	Aug. 8, 1948	168.51
July 17	63.00	Jan. 25, 1936	114.10	Sept. 13	148.46
Aug. 20	64.25	Aug. 23	61.51	Aug. 10, 1949	131.83
Sept. 25	89.70	July 11, 1937	54.29	Aug. 16, 1950	183.05
Oct. 30	64.95	Jan. 14, 1938	61.13	Sept. 12, 1951	259.85
Feb. 4, 1931	166.70	Aug. 18	51.09	Aug. 21, 1952	267.38
Mar. 2	56.35	July 18, 1939	62.43	Sept. 10, 1953	300.92
Apr. 23	59.10	Aug. 16	58.29	Oct. 7, 1954	299.35
May 23	48.85	Dec. 12	67.00	Sept. 20, 1955	302.45
June 24	44.25	Aug. 1, 1940	49.67		

N-5-87. Lat. 28°45', long. 99°44'. Depth 1,150 feet, diameter 12 inches, cased to 930.

Sept. 17, 1948	179.00	Aug. 10, 1949	172.08	Sept. 10, 1953	321.2
----------------	--------	---------------	--------	----------------	-------

N-7-2. Lat. 28°39', long. 99°59'. Depth 400 feet, diameter 8 inches. Land-surface datum is 609.3 feet above msl.

Oct. 30, 1929	26.50	Dec. 11, 1930	29.65	Dec. 22, 1932	33.02
Nov. 22	29.30	Feb. 6, 1931	28.55	Mar. 18, 1933	33.00
Dec. 4	30.00	Mar. 4	27.40	Aug. 27, 1934	42.15
Dec. 18	33.95	Apr. 25	29.90	Mar. 13, 1935	45.72
Jan. 16, 1930	34.80	June 8	26.60	July 31	35.85
Feb. 19	35.85	July 2	26.40	Jan. 26, 1936	40.15
Mar. 17	38.40	Oct. 2	29.90	Aug. 26	40.45
Apr. 16	47.10	Nov. 2	38.25	July 14, 1937	37.38
May 19	33.10	Dec. 4	36.20	Aug. 16	40.16
June 17	30.30	Jan. 7, 1932	32.50	Jan. 12, 1938	37.20
July 15	29.15	Feb. 11	38.50	Aug. 24	38.33
Aug. 25	30.65	Mar. 18	37.60	Apr. 6, 1939	44.12
Sept. 25	32.65	July 6	31.80	July 19	40.53
Nov. 4	28.70	Aug. 29	31.95	Aug. 13	40.79



## WATER-LEVEL MEASUREMENTS IN ZAVALA COUNTY--CONTINUED

Date	Water level	Date	Water level	Date	Water level
------	-------------	------	-------------	------	-------------

N-7-4. Lat. 28°39', long. 99°58'. Diameter 8 inches. Land-surface datum is 591.5 feet above msl.

Oct. 30, 1929	21.9	July 15, 1930	21.75	Feb. 11, 1932	38.95
Nov. 22	21.65	Aug. 25	25.35	July 6	23.85
Dec. 4	27.55	Feb. 6, 1931	20.30	Aug. 29	26.15
Dec. 18	31.50	Mar. 4	17.65	Dec. 22	26.40
Jan. 16, 1930	32.65	Apr. 25	22.95	Mar. 18, 1933	24.00
Feb. 19	36.45	June 8	16.00	Sept. 21	21.90
Mar. 17	40.80	July 3	15.35	Mar. 13, 1935	45.62
May 19	31.10	Oct. 2	18.90	July 31	26.78
June 17	24.45	Jan. 7, 1932	27.35	Jan. 26, 1936	35.70

N-7-42a. Lat. 28°39', long. 99°55'. Diameter 6 inches.

Sept. 16, 1948	70.80	Sept. 21, 1955	99.53	Sept. 20, 1956	106.76
----------------	-------	----------------	-------	----------------	--------

N-8-7. Lat. 28°39', long. 99°47'. Depth 1,085 feet, diameter 15 inches. Land-surface datum is 570.1 feet above msl.

Nov. 27, 1929	78.15	May 23, 1931	44.15	Aug. 23, 1936	55.12
Dec. 18	86.05	June 24	39.70	July 11, 1937	52.29
Jan. 21, 1930	91.90	July 24	33.60	Aug. 17	52.00
Feb. 20	113.00	Sept. 28	40.15	Jan. 14, 1938	59.63
Mar. 25	103.00	Nov. 3	96.05	Aug. 17	50.35
Apr. 19	96.20	Jan. 4, 1932	80.80	Apr. 7, 1939	75.14
May 24	77.25	Feb. 2	91.85	July 18	60.54
June 20	67.05	Mar. 17	71.75	Aug. 16	54.58
July 15	60.30	May 5	71.90	Aug. 2, 1941	39.63
Aug. 20	61.70	Aug. 26	48.80	Aug. 11, 1942	58.51
Sept. 25	76.45	Dec. 19	83.65	Aug. 11, 1943	70.08
Oct. 30	62.55	Mar. 17, 1933	56.95	Dec. 20	74.39
Dec. 9	70.20	Sept. 15	42.00	July 7, 1944	68.24
Jan. 8, 1931	88.40	Aug. 29, 1934	56.60	Aug. 9	77.25
Feb. 4	60.50	Mar. 6, 1935	114.45	July 21, 1945	75.42
Mar. 2	50.15	July 30	56.20	July 11, 1946	84.95
Apr. 23	65.20	Jan. 25, 1936	80.25	July 24, 1947	102.50

## WATER-LEVEL MEASUREMENTS IN ZAVALA COUNTY--CONTINUED

Date	Water level	Date	Water level	Date	Water level
------	-------------	------	-------------	------	-------------

N-9-2. Lat. 28°38', long. 99°34'. Depth 2,000 feet, diameter 6 inches.  
Land-surface datum is 556.1 feet above msl.

Jan. 31, 1930	51.35	Apr. 29, 1931	45.10	Nov. 4, 1931	39.15
Aug. 23	50.60	May 27	43.65	Dec. 2	45.30
Jan. 13, 1931	48.85	June 25	41.10	Jan. 12, 1932	47.15
Feb. 10	47.95	July 28	39.35	Feb. 12	48.30
Mar. 5	46.20				

O-1-1. Lat. 28°50', long. 99°29'. Depth 33 feet, diameter 6 inches.

Jan. 30, 1946	28.17	Aug. 8, 1946	27.60	Mar. 5, 1947	38.70
---------------	-------	--------------	-------	--------------	-------

O-1-2. Lat. 28°50', long. 99°27'. Depth 46 feet, diameter 6 inches.  
Dug well.

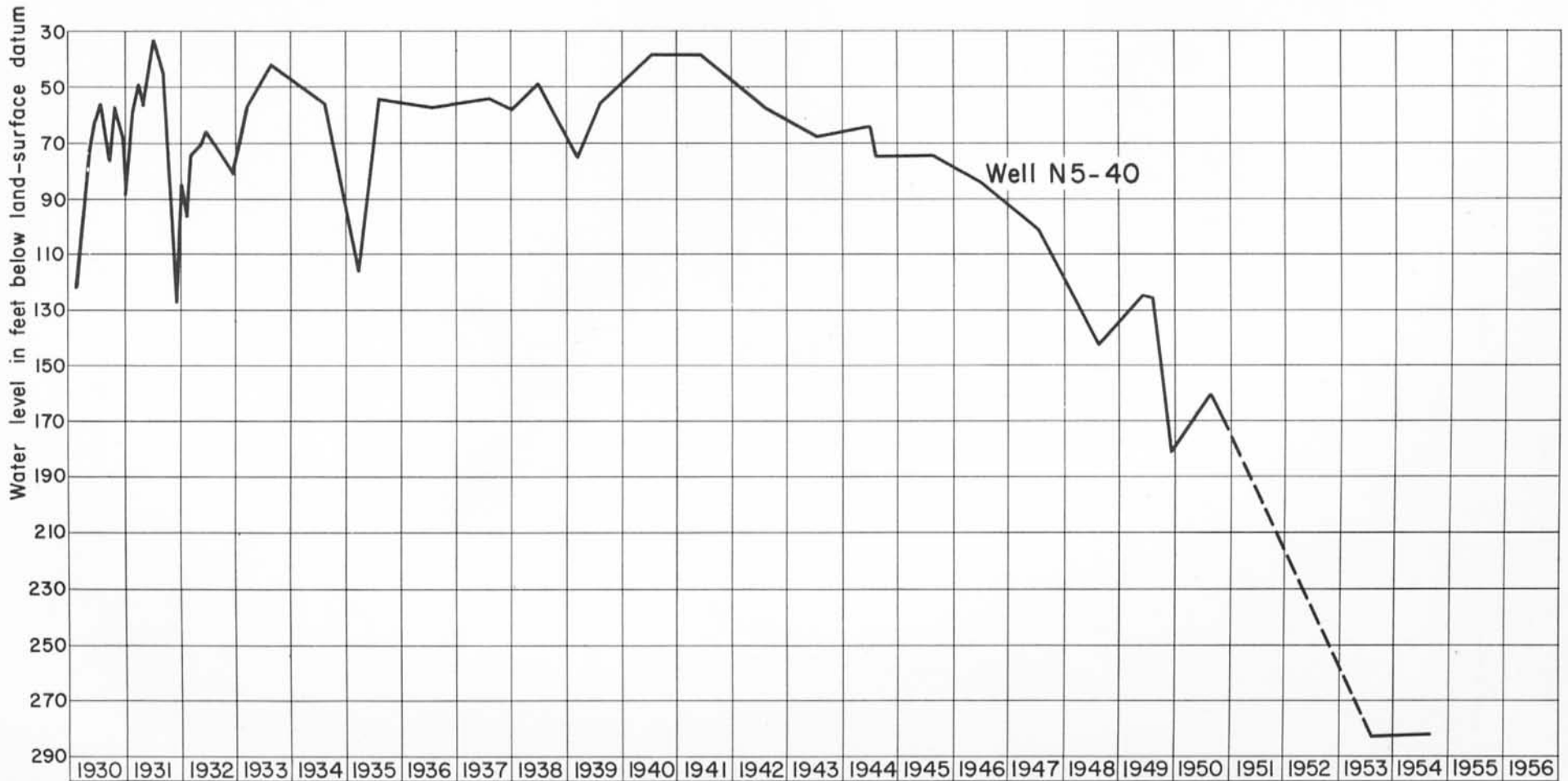
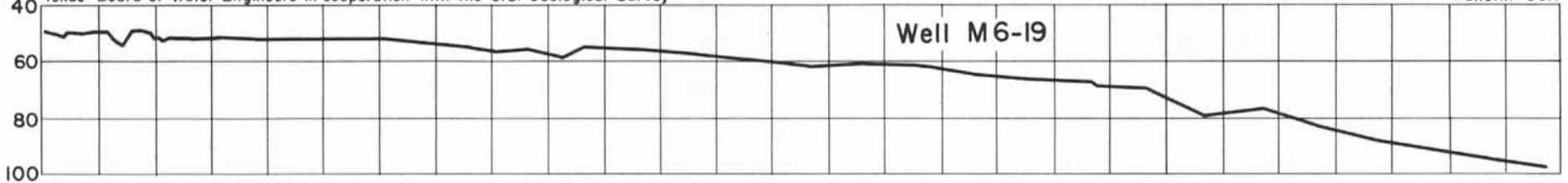
Jan. 30, 1946	28.64	Mar. 5, 1947	30.18		
---------------	-------	--------------	-------	--	--

a pumping

b pumped recently



Hydrographs of water levels in wells H8-68 and NI-73 in Zavala County, Tex.



Hydrographs of water levels in wells M6-19 and N5-40 in Zavala County, Tex.

74

