

TEXAS BOARD OF WATER ENGINEERS

R. M. Dixon, Chairman
H. A. Beckwith, Member
O. F. Dent, Member

BULLETIN 5610

RECORDS OF WATER-LEVEL MEASUREMENTS IN
COMAL AND GUADALUPE COUNTIES, TEXAS

1933 TO MARCH 1956

Compiled by

C. R. Follett, Engineer
Texas Board of Water Engineers

From records of the Texas Board of Water Engineers,
and the Geological Survey, United States Department of the Interior

April 1956

CONTENTS

Introduction.	1
List of Publications.	2
Water-level measurements in Comal County.	6
Water-level measurements in Guadalupe County.	30

ILLUSTRATIONS

Map showing location of observation wells in Comal and Guadalupe Counties.	5
Hydrographs of water levels in wells, Comal County, and annual precipitation at New Braunfels, Texas.	31
Hydrographs of water levels in two wells, Comal County, and the flow of Comal Springs at New Braunfels, Texas.	32

RECORDS OF WATER-LEVEL MEASUREMENTS IN COMAL AND GUADALUPE COUNTIES, TEXAS

1933 TO MARCH 1956

Compiled by
C. R. Follett, Engineer
Texas Board of Water Engineers
April 1956

INTRODUCTION

The Texas Board of Water Engineers is charged with making independently or in cooperation with other state and federal agencies, scientific investigations of the source, amount and quality of ground-water supplies. To evaluate effects of ground-water development in relation to available supply, periodic measurements of water levels are made in principal reservoirs of the state through an observation well program financed cooperatively by the Texas Board of Water Engineers and the United States Geological Survey.

Water levels in some observation wells are published annually in Water-Supply Papers of the Geological Survey. County water-level reports are published periodically by the Texas Board of Water Engineers and include all recorded water levels in selected observation wells. This bulletin contains measurements of the depth of water in feet below land-surface datum in 83 wells in Comal County and two wells in Guadalupe County. These records cover the period from 1933 to March 1956. During 1936-37, an inventory of wells in Comal County made by E. J. Michal and the results published by the Texas Board of Water Engineers in 1937. During parts of the period 1941-46, a detailed study of the geology and water resources of Comal County was made by W. O. George and the results published by the Texas Board of Water Engineers in 1947. The same data, with some additions, was published in 1952 by the Geological Survey. During 1935-36, an inventory of wells in Guadalupe County was made and the results published by the Texas Board of Water Engineers in 1937. Water-level measurements in the selected observation wells made during the time of the investigations, as well as interim measurements, are included in this bulletin.

The water levels are reported in feet below land-surface datum. The accompanying map shows the locations of the observation wells. The well numbers on the map correspond to those outside the parentheses in the table of measurements. Where there is a number inside the parentheses, it is a number assigned to this well in some publications prior to Water-Supply Paper 1138. Hydrographs showing the fluctuation of water levels in five wells, the monthly average flow of Comal Springs in New Braunfels, and the precipitation at New Braunfels are given on pages 31 and 32. Records of water wells, geologic data, and discussion of ground-water conditions may be found in the included list of publications.

LIST OF PUBLICATIONS

- ALTGELT, E. S., and MICHAL, E. J., 1937, Records of Wells in Guadalupe County, Texas: Texas Board of Water Engineers.*
- BROADHURST, W. L., SUNDSTROM, R. W., and ROWLEY, J. H., 1946, Public water supplies in southern Texas: Texas Board of Water Engineers.*
- _____, 1950, Public water supplies in southern Texas: U. S. Geol. Survey Water-Supply Paper 1070.
- DEUSSEN, ALEXANDER, 1924, Geology of the Coastal Plain of Texas west of the Brazos River: U. S. Geol. Survey Prof. Paper 126.*
- GEORGE, W. O. and OTHERS, 1947, Geology and ground-water resources of Comal County, Texas: Texas Board of Water Engineers.*
- _____, 1952, Geology and ground-water resources of Comal County, Texas: U. S. Geol. Water Supply Paper 1138.
- HILL, R. T. and VAUGHN, T. W., 1898, Geology of the Edwards Plateau and Rio Grande Plain adjacent to Austin and San Antonio, Texas: Part 2, U. S. Geol. Survey 18th Ann. Rept.*
- MEINZER, O. E., and WENZEL, L. K., 1937, Water levels and artesian pressure in observation wells in the United States in 1936: U. S. Geol. Survey Water-Supply Paper 817.*
- _____, 1938, Water levels and artesian pressure in observation wells in the United States in 1937: U. S. Geol. Survey Water-Supply Paper 840.*
- _____, 1939, Water levels and artesian pressures in observation wells in the United States in 1938: U. S. Geol. Survey Water-Supply Paper 845.
- _____, 1940, Water levels and artesian pressure in observation wells in the United States in 1939: U. S. Geol. Survey Water-Supply Paper 886.*
- _____, 1941, Water levels and artesian pressure in observation wells in the United States in 1940: U. S. Geol. Survey Water-Supply Paper 909.*
- _____, 1943, Water levels and artesian pressure in observation wells in the United States in 1941: U. S. Geol. Survey Water-Supply Paper 939.*

LIST OF PUBLICATIONS

MEINZER, O. E., and WENZEL, L. K., 1944, Water levels and artesian pressure in observation wells in the United States in 1942: U. S. Geol. Survey Water-Supply Paper 947.*

_____, 1946, Water levels and artesian pressure in observation wells in the United States in 1942: Part 4, U. S. Geol. Survey Water-Supply 989.*

MICHAL, E. J., 1937, Records of wells in Comal County: Texas Board of Water Engineers.*

SAYRE, A. N., and OTHERS, 1947, Water levels and artesian pressure in observation wells in the United States in 1944: Part 4, U. S. Geol. Survey Water-Supply Paper 1019.

_____, 1948, Water levels and artesian pressure in observation wells in the United States in 1945: Part 4, U. S. Geol. Survey Water-Supply Paper 1026.*

_____, 1949, Water levels and artesian pressure in observation wells in the United States in 1946: Part 4, U. S. Geol. Survey Water-Supply Paper 1074.*

_____, 1950, Water levels and artesian pressure in observation wells in the United States in 1947: Part 4, U. S. Geol. Survey Water-Supply Paper 1099.*

_____, 1951, Water levels and artesian pressure in observation wells in the United States in 1948: Part 4, U. S. Geol. Survey Water-Supply Paper 1129.*

_____, 1952, Water levels and artesian pressure in observation wells in the United States in 1949: Part 4, U. S. Geol. Survey Water-Supply Paper 1159.*

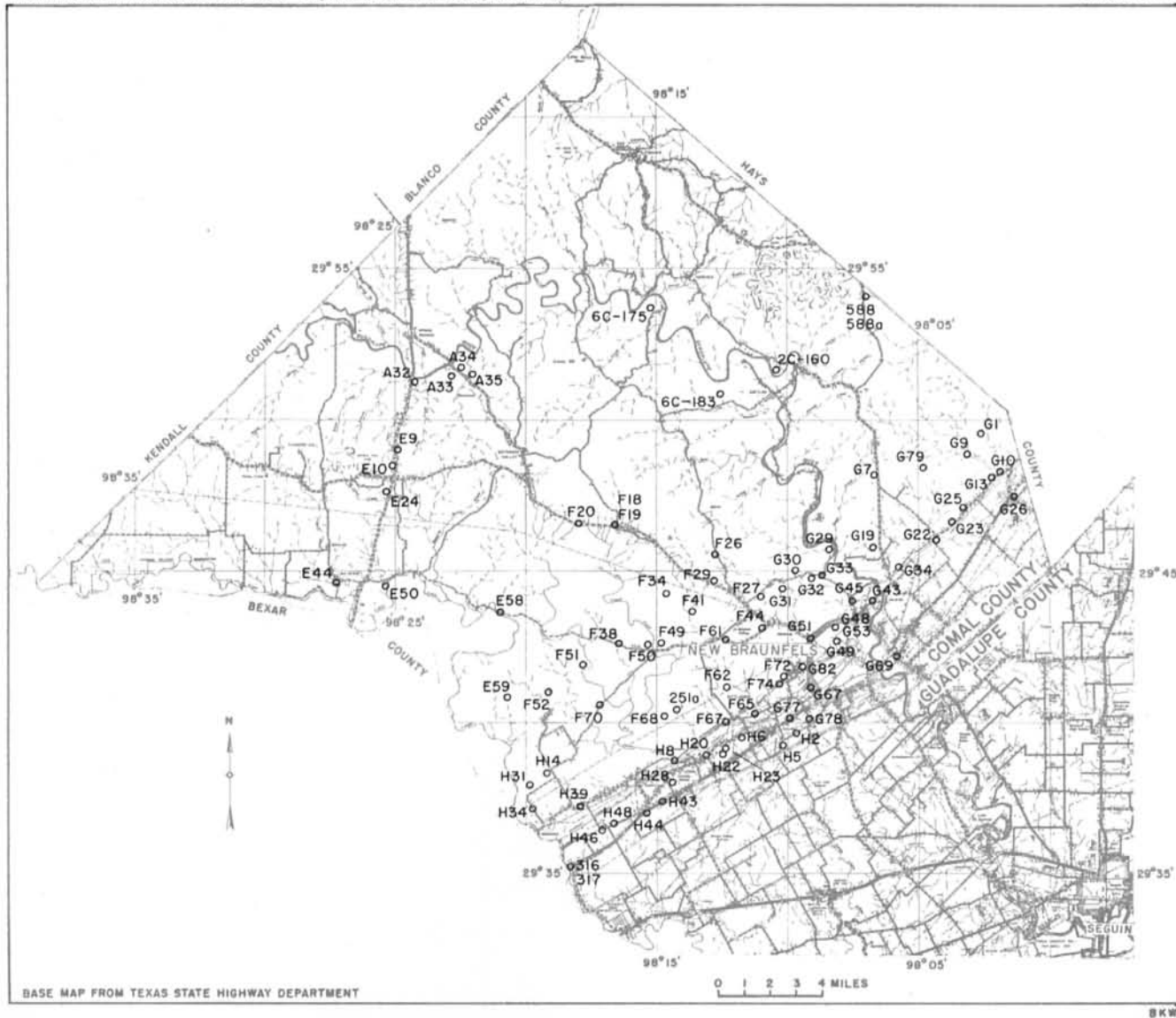
_____, 1953, Water levels and artesian pressure in observation wells in the United States in 1950: Part 4, U. S. Geol. Survey Water-Supply Paper 1168.*

_____, 1954, Water levels and artesian pressure in observation wells in the United States in 1951: Part 4, U. S. Geol. Survey Water-Supply Paper 1194.*

_____, 1954, Water levels and artesian pressure in observation wells in the United States in 1952: Part 4, U. S. Geol. Survey Water-Supply Paper 1224.*

* Out of print. Copies available for reference in some public libraries and at the Austin offices of the Texas Board of Water Engineers, and the U. S. Geological Survey.

COMAL AND GUADALUPE COUNTIES



OBSERVATION WELLS IN COMAL AND GUADALUPE COUNTIES, TEXAS
MARCH 1956

WATER-LEVEL MEASUREMENTS IN COMAL COUNTY, TEXAS

251a. Lat. $29^{\circ}40'$, long. $98^{\circ}14'$. Land-surface datum is 856.4 feet above msl.

Date	Water level	Date	Water level	Date	Water level
Jan. 3, 1951	223.71	Sept. 4, 1952	230.93	Aug. 26, 1954	233.24
Mar. 12, 1952	228.98				

588. Lat. $29^{\circ}54'$, long. $98^{\circ}06'$. Depth 182 feet, diameter 5 inches.

Nov. 15, 1937	149.4	June 25, 1940	147.25	Mar. 27, 1941	144.65
Dec. 13	149.37	July 29	b 149.10	May 23	147.40
Jan. 26, 1938	149.35	29	147.38	Aug. 7	148.80
Mar. 2	149.33	Aug. 29	147.35	Nov. 19	148.68
Dec. 20, 1939	147.44	29	149.33	Aug. 3, 1942	148.68
Jan. 24, 1940	147.40	Sept. 23	b 149.41	Dec. 7	149.62
Feb. 28	147.36	23	147.38	Apr. 15	148.81
Mar. 22	b 149.80	Oct. 28	b 149.59	Sept. 11, 1943	150.45
22	142.39	28	147.39	Dec. 18	148.78
Apr. 30	147.37	Dec. 6	b 149.47	Aug. 25	148.45
May 28	147.38	6	147.40	Dec. 19	148.64
June 25	147.37	Jan. 30, 1941	149.05		

588a. Lat. $29^{\circ}53'$, long. $98^{\circ}06'$. Depth 73 feet.

Mar. 2, 1938	12.8	Dec. 20, 1939	20.42	Aug. 29, 1940	23.97
30	11.99	Jan. 24, 1940	30.55	Sept. 23	25.70
Apr. 23	8.36	Mar. 27	18.72	Oct. 28	30.12
May 19	2.32	Apr. 30	30.20	May 29, 1941	9.95
June 23	12.48	June 25	31.38		
Aug. 30	15.57	July 29	27.22		

2C-160. Lat. $29^{\circ}51'$, long. $98^{\circ}10'$. Depth 240 feet, diameter 5 inches. Land-surface datum is 992.4 feet above msl. * Monthly highest from recorder graph.

Aug. 31, 1950	* 66.2	Oct. 17, 1950	* 63.7	Dec. 4, 1950	* 63.5
Sept. 30	* 64.2	Nov. 18	* 63.6	Aug. 7, 1951	63.6

6C-175. Lat. $29^{\circ}53'$, long. $98^{\circ}15'$. Depth 215 feet, diameter 8 inches to 4 feet. Land-surface datum is 989.7 feet above msl. * Monthly highest from recorder graph.

June 20, 1950	169.8	Sept. 29, 1950	* 135.9	Mar. 6, 1952	143.4
July 12	156.2	Oct. 22	* 134.5	Aug. 6	148.3
18	154.3	Nov. 8	* 134.2	Dec. 17	122.2
25	149.7	Dec. 4	* 134.5		
Aug. 31	* 138.5	Aug. 7, 1951	* 138.9		

WATER-LEVEL MEASUREMENTS IN COMAL COUNTY -- CONTINUED

6C-183. Lat. 29°50', long. 98°12'. Depth 205 feet, diameter 5 inches.
* Monthly highest from recorder graph.

Date	Water level	Date	Water level	Date	Water level
Aug. 11, 1950	*125.5	Nov. 19, 1950	*125.2	Mar. 6, 1952	124.6
Sept. 1	*125.6	Dec. 1	*125.5	Aug. 6	124.1
Oct. 27	*125.6	Aug. 7, 1951	125.1	Dec. 17	122.2

A32.(120). Lat. 29°51', long. 98°24'. Depth 380 feet, diameter 6 inches.
Land-surface datum is 1,029.3 feet above msl.

Nov. 16, 1936	74.10	Aug. 27, 1940	87.90	Sept. 10, 1943	75.83
Oct. 29, 1939	77.77	28	83.26	Dec. 20	76.31
Dec. 19	78.13	Sept. 26	81.87	Dec. 18, 1944	72.96
Jan. 29, 1940	77.80	Oct. 29	83.40	May 17, 1945	72.90
Feb. 28	79.51	Dec. 5	75.06	July 12	76.40
Mar. 26	80.15	May 22, 1941	67.03	Mar. 20, 1946	72.64
Apr. 30	80.08	Nov. 18	75.15	Aug. 11, 1948	83.64
May 23	80.20	Apr. 3, 1942	79.88	Jan. 23, 1950	77.09
June 27	85.33	Dec. 8	73.33		
July 25	82.05	Apr. 19, 1943	76.19		

A33.(117). Lat. 29°51', long. 98°22'. Depth 157 feet, diameter 6 inches.
Land-surface datum is 1,006.6 feet above msl.

Nov. 20, 1936	119.10	July 1, 1940	133.26	Sept. 10, 1943	123.24
Oct. 11, 1939	124.98	26	147.94	Dec. 20	122.87
Dec. 19	132.68	Aug. 28	128.96	May 17, 1945	95.30
Jan. 29, 1940	134.07	Sept. 27	126.72	Mar. 20, 1946	120.46
Feb. 27	135.06	Oct. 29	125.77	Aug. 11, 1948	124.39
Mar. 26	130.88	Dec. 5	131.25	Jan. 10, 1949	122.20
Apr. 30	131.39	Jan. 24, 1941	131.77	Jan. 23, 1950	123.63
May 23	130.80	Apr. 3, 1942	129.33		

A34.(118). Lat. 29°51', long. 98°24'. Depth 108 feet, diameter 6 inches.
Land-surface datum is 1,015.9 feet above msl.

Jan. 26, 1937	92.70	Sept. 27, 1940	92.68	Sept. 10, 1943	92.66
Oct. 11, 1939	92.70	Oct. 29	92.68	Dec. 20	92.67
Dec. 19	92.72	Dec. 5	92.69	May 2, 1944	91.16
Jan. 29, 1940	92.69	Jan. 24, 1941	92.66	Aug. 24	92.63
Feb. 27	92.72	Mar. 25	92.61	Dec. 18	92.63
Mar. 26	92.69	May 22	92.08	May 17, 1945	93.00
Apr. 30	92.69	Nov. 18	92.66	July 12	92.63
May 29	92.69	Apr. 3, 1942	92.73	Mar. 20, 1946	92.61
July 1	92.71	Aug. 7	92.68	Aug. 11, 1948	92.66
26	92.74	Dec. 8	92.64	Jan. 10, 1949	96.82
Aug. 28	92.67	Apr. 19, 1943	92.65	Jan. 23, 1950	92.66

WATER-LEVEL MEASUREMENTS IN COMAL COUNTY -- CONTINUED

A35.(119). Lat. 29°51', long. 98°22'. Depth 200 feet, diameter 6 inches.
Land-surface datum is 1,031.7 feet above msl.

Nov. 19, 1936	166.70	Sept. 26, 1940	174.04	Sept. 10, 1943	170.89
Oct. 11, 1939	172.47	Oct. 28	173.79	Dec. 20	171.37
Dec. 19	173.13	Dec. 5	174.13	May 2, 1944	166.82
Jan. 29, 1940	173.35	Jan. 24, 1941	173.94	Aug. 24	155.55
Feb. 27	173.33	Mar. 25	172.27	Dec. 18	161.29
Mar. 26	173.66	May 22	167.18	May 17, 1945	138.40
Apr. 30	173.67	Nov. 18	162.92	July 12	138.80
May 23	173.74	Apr. 3, 1942	168.48	Mar. 20, 1946	162.75
June 27	173.86	Aug. 7	171.46	Aug. 11, 1948	169.18
July 25	173.92	Dec. 8	165.72	Jan. 10, 1949	171.49
Aug. 27	173.93	Apr. 19, 1943	167.85	Jan. 23, 1950	170.72

E9.(131). Lat. 29°49', long. 98°24'. Depth 300 feet, diameter 6 inches.
Land-surface datum is 1,204.6 feet above msl.

Nov. 16, 1936	116.30	Sept. 27, 1940	119.71	Sept. 10, 1943	115.58
Oct. 12, 1939	117.76	Oct. 29	119.87	Dec. 20	116.19
Jan. 29, 1940	118.41	Dec. 5	120.02	Aug. 24, 1944	106.82
Feb. 27	118.61	Jan. 24, 1941	119.23	Dec. 18	109.88
Mar. 26	118.84	Mar. 25	116.00	July 12, 1945	101.88
Apr. 30	119.08	Nov. 18	109.80	Mar. 20, 1946	108.68
May 29	119.26	Apr. 3, 1942	112.53	Aug. 11, 1948	116.61
June 27	119.32	Aug. 7	114.39	Jan. 23, 1950	115.65
July 25	119.33	Dec. 8	109.56		
Aug. 27	119.48	Apr. 19, 1943	111.98		

E10.(155). Lat. 29°48', long. 98°25'. Depth 185 feet, diameter 6 inches.
Land-surface datum is 1,241.4 feet above msl.

Dec. 10, 1936	83.00	July 25, 1940	115.92	Sept. 11, 1943	116.04
Jan. 29, 1939	120.30	Aug. 27	116.00	Dec. 20	115.48
Oct. 12	114.85	Sept. 26	116.12	Aug. 24, 1944	119.52
Dec. 19	115.89	Oct. 28	115.96	May 17, 1945	114.70
Feb. 28, 1940	115.61	Jan. 29, 1941	115.83	July 12	116.60
Mar. 26	115.90	Mar. 25	41.40	Mar. 20, 1946	113.1
May 23	115.95	May 22	42.47	Aug. 11, 1948	115.41
July 1	116.03	Apr. 3, 1942	85.30	Jan. 23, 1950	115.65

WATER-LEVEL MEASUREMENTS IN COMAL COUNTY -- CONTINUED

E24.(171). Lat. $29^{\circ}47'$, long. $98^{\circ}25'$. Depth 248 feet, diameter 8 inches.
Land-surface datum is 1,156.9 feet above msl.

Date	Water level	Date	Water level	Date	Water level
Nov. 16, 1936	228.4	Sept. 26, 1940	239.7	Sept. 11, 1943	236.0
Oct. 12, 1939	238.2	Oct. 28	239.4	Dec. 20	234.5
Dec. 19	238.4	Dec. 5	238.9	Aug. 24, 1944	220.3
Jan. 29, 1940	238.5	Jan. 24, 1941	237.6	Dec. 18	223.8
Feb. 28	238.6	Mar. 25	226.6	May 18, 1945	190.5
Mar. 26	239.0	May 22	204.0	July 5	207.8
Apr. 30	239.0	Nov. 19	226.5	Mar. 20, 1946	225.6
May 23	239.0	Apr. 3, 1942	232.4	Aug. 11, 1948	231.3
June 27	239.2	Aug. 7	233.9	Jan. 23, 1950	233.8
July 25	239.2	Dec. 8	217.5		
Aug. 27	239.3	Apr. 19, 1943	229.4		

E44.(183). Lat. $29^{\circ}44'$, long. $98^{\circ}27'$. Depth 375 feet, diameter 6 inches.
Land-surface datum is 1,096.2 feet above msl.

Nov. 12, 1936	217.50	July 1, 1940	276.94	May 18, 1945	121.80
Oct. 11, 1939	286.04	Aug. 27	282.55	July 5	211.90
Jan. 29, 1940	281.02	May 22, 1941	44.40	Mar. 20, 1946	217.14
Feb. 27	278.21	Sept. 11, 1943	265.31	Aug. 11, 1948	278.5
May 23	278.47	Dec. 20	271.17	Jan. 25, 1950	273.70

E50.(184). Lat. $29^{\circ}44'$, long. $98^{\circ}25'$. Depth 371 feet, diameter 6 inches.
Land-surface datum is 1,052.4 feet above msl.

Nov. 12, 1936	213.10	July 25, 1940	322.41	Apr. 19, 1943	270.00
Oct. 11, 1939	322.09	Oct. 29	322.25	Sept. 11	286.24
Dec. 19	322.35	Jan. 29, 1941	298.35	Dec. 18, 1944	136.94
Jan. 30, 1940	325.00	Mar. 25	83.28	May 4, 1945	79.00
Feb. 27	322.17	25	83.4	18	111.00
June 27	323.44	May 22	60.47	Mar. 20, 1946	183.4

E58.(193). Lat. $29^{\circ}43'$, long. $98^{\circ}20'$. Depth over 200 feet, diameter 6 inches.
Land-surface datum is 955.9 feet above msl.

Nov. 12, 1936	153.7	July 25, 1940	225.61	Nov. 19, 1941	180.03
Oct. 12, 1939	226.55	Aug. 27	224.88	Apr. 3, 1942	213.30
Dec. 19	224.75	Sept. 26	225.81	Aug. 7	216.24
Jan. 30, 1940	225.13	Oct. 29	225.77	Dec. 8	100.07
Feb. 28	224.51	Dec. 5	216.92	Apr. 19, 1943	201.47
Apr. 30	225.11	Jan. 24, 1941	201.11	Sept. 11	208.14
May 23	224.57	Mar. 25	79.86	Dec. 20	220.04
June 27	223.55	May 22	49.30		

WATER-LEVEL MEASUREMENTS IN COMAL COUNTY -- CONTINUED

E59.(207). Lat. 29°40', long. 98°20'. Depth 325 feet, diameter 6 inches.
Land-surface datum is 962.1 feet above msl.

Date	Water level	Date	Water level	Date	Water level
Dec. 1, 1936	156.6	Jan. 10, 1951	266.9	Sept. 3, 1952	269.4
May 18, 1945	250.3	Mar. 11, 1952	268.2	Sept. 1, 1954	266.3

F18.(195). Lat. 29°46', long. 98°16'. Depth 178 feet, diameter 6 inches.
Land-surface datum is 1090.3 feet above msl.

Jan. 29, 1940	49.30	Sept. 27, 1940	49.36	May 19, 1945	49.7
Feb. 27	49.35	Oct. 29	49.35	July 5	49.32
Apr. 29	49.35	Dec. 6	49.28	Jan. 23, 1950	49.31
June 27	49.27	Sept. 10, 1943	49.11	Jan. 4, 1951	49.38

F19.(196). Lat. 29°46', long. 98°16'. Depth 302 feet, diameter 6 inches.
Land-surface datum is 1,085.8 feet above msl.

Sept. 21, 1943	51.27	May 19, 1945	55.7	Jan. 4, 1951	54.82
----------------	-------	--------------	------	--------------	-------

F20.(162). Lat. 29°46', long. 98°17'. Depth 208 feet, diameter 6 inches.
Land-surface datum is 1,174.1 feet above msl.

Jan. 29, 1940	139.11	Oct. 28, 1940	139.45	Nov. 29, 1943	141.32
Feb. 27	139.25	Jan. 29, 1941	138.39	Aug. 24, 1944	138.59
Mar. 26	139.48	Mar. 25	132.11	Dec. 18	136.62
Apr. 29	139.41	May 22	132.80	Apr. 6, 1945	131.40
May 23	139.39	Nov. 18	138.20	May 17	137.40
July 1	137.79	Dec. 8, 1942	136.5	July 5	139.50
Sept. 27	139.91	Apr. 19, 1943	138.68	Mar. 19, 1946	134.4

F26.(224). Lat. 29°44', long. 98°10'. Depth 251 feet, diameter 6 inches.
Land-surface datum is 849.1 feet above msl.

Dec. 31, 1936	229.98	Apr. 13, 1945	179.10	July 3, 1945	190.00
Dec. 18, 1937	212.36	May 23	183.50		

WATER-LEVEL MEASUREMENTS IN COMAL COUNTY -- CONTINUED

F27.(226). Lat. 29°44', long. 98°11'. Depth 290 feet, diameter 6 inches.
Land-surface datum is 878.6 feet above msl.

Dec. 21, 1936	259.2	Feb. 27, 1940	250.32	Dec. 5, 1940	251.31
Oct. 9, 1939	261.40	Mar. 26	250.57	May 23, 1941	236.89
Dec. 18	249.58	July 1	249.68	Aug. 15	236.64
Jan. 29, 1940	250.07	Oct. 29	251.25	Apr. 9, 1942	242.21

F29.(390). Lat. 29°44', long. 98°12'. Diameter 6 inches. Land-surface datum is 966.4 feet above msl.

Apr. 13, 1945	274.6	Jan. 24, 1950	304.0	Sept. 5, 1952	305.5
May 16	289.8	Jan. 5, 1951	304.8	Sept. 1, 1954	305.0
July 4	297.9	Mar. 12, 1952	305.4		

F34.(385). Lat. 29°44', long 98°14'. Depth 306 feet, diameter 6 inches.
Land-surface datum is 968.1 feet above msl.

Apr. 27, 1945	268.1	Jan. 24, 1950	267.5	Sept. 5, 1952	269.5
May 19	269.3	Jan. 4, 1951	267.2		
July 4	269.5	Mar. 12, 1952	270.4		

F38.(210). Lat. 29°42', long 98°16'. Depth 320 feet. Land-surface datum is 954.1 feet above msl.

Nov. 9, 1936	255.64	May 18, 1945	254.1	Jan. 4, 1951	276.9
Jan. 10, 1937	254.87	July 11	266.9	Mar. 11, 1952	276.9
May 4, 1945	246.0	Jan. 22, 1950	271.0		

F41.(232). Lat. 29°43', long. 98°13'. Depth 250 feet, diameter 6 inches.
Land-surface datum is 941.89 feet above msl.

Jan. 25, 1937	188.75	Jan. 24, 1941	175.16	Aug. 24, 1944	175.19
Oct. 10, 1939	171.89	Mar. 25	170.54	Dec. 18	176.28
Jan. 29, 1940	179.90	May 22	168.19	May 18	182.4
Feb. 27	175.49	Nov. 18	177.36	July 4	181.48
Apr. 29	177.54	Mar. 6, 1942	172.81	Mar. 19	168.0
May 23	180.37	Apr. 3	180.42	July 6, 1947	188.86
June 27	180.93	Aug. 7	176.62	Nov. 23	192.74
July 26	182.46	Dec. 8	177.21	May 2, 1948	197.12
Aug. 27	178.43	Apr. 19, 1943	167.92	Aug. 11, 1948	196.14
Sept. 26	175.87	Sept. 10	167.70	Jan. 23, 1950	195.67
Oct. 28	184.91	Dec. 20	174.36	Jan. 3, 1951	197.77
Dec. 5	187.22	May 1, 1944	177.03		

WATER-LEVEL MEASUREMENTS IN COMAL COUNTY -- CONTINUED

F44.(263a). Lat. $29^{\circ}43'$, long $98^{\circ}10'$. Depth 244 feet, diameter 8 inches.
Land-surface datum is 861.7 feet above msl. * Monthly highest reading from recorder graph.

Date	Water level	Date	Water level	Date	Water level
Oct. 10, 1939	233.1	Oct. 9, 1941	*224.7	Dec. 1, 1943	*229.6
Dec. 18	233.8	Nov. 1	*225.2	Jan. 31, 1944	*229.0
Jan. 24, 1940	234.1	Dec. 1	*226.2	Feb. 3	*228.9
Feb. 28	234.2	Jan. 1, 1942	*226.6	Apr. 8	224.0
Mar. 26	234.4	Feb. 1	*227.4	May 1	224.0
Apr. 29	234.4	Mar. 1	*227.9	May 24, 1945	217.8
May 23	234.3	Apr. 13	*228.0	July 3	219.1
June 27	233.5	May 29	*228.5	May 19, 1946	225.1
July 26	233.8	June 1	*228.7	July 6, 1947	220.6
Aug. 27	234.4	July 18	*228.2	Nov. 23	225.2
Sept. 23	234.9	Aug. 1	*228.8	May 2, 1948	229.7
Oct. 29	235.3	Sept. 6	*229.2	Jan. 11, 1949	223.9
Dec. 5	235.3	Dec. 11	*220.9	Jan. 23, 1950	233.2
Jan. 24, 1941	233.6	Apr. 19, 1943	224.6	Jan. 4, 1951	235.7
Mar. 28	229.9	.29	224.8	Mar. 12, 1952	239.0
May 22	224.1	Sept. 10	227.9	Sept. 5	242.7
Aug. 14	*223.2	Oct. 5	*228.4		
Sept. 1	*223.8	Nov. 1	*228.9		

F49.(233). Lat. $29^{\circ}42'$, long. $98^{\circ}14'$. Depth 313 feet, diameter 6 inches.
Land-surface datum is 916.7 feet above msl.

Oct. 11, 1933	267.35	July 5, 1947	239.34	Jan. 3, 1951	266.39
Dec. 16, 1936	259.82	Nov. 23	241.61	Mar. 11, 1952	268.1
May 24, 1945	233.0	Apr. 23, 1948	254.80		
July 3	240.48	Jan. 23, 1950	267.02		

F50.(254). Lat. $29^{\circ}42'$, long. $98^{\circ}15'$. Depth 375 feet, diameter 6 inches.
Land-surface datum is 921.4 feet above msl.

Apr. 13, 1945	221.5	Nov. 27, 1947	246.3	Mar. 11, 1952	270.4
May 18	231.9	Apr. 23, 1948	261.2	Sept. 3	272.3
July 11	244.5	Jan. 25, 1950	266.2	Aug. 25, 1954	272.0
July 3, 1947	244.5	Jan. 3, 1951	269.4		

F51.(94). Lat. $29^{\circ}41'$, long $98^{\circ}17'$. Depth 320 feet, diameter 6 inches.
Land-surface datum is 930.6 feet above msl.

Apr. 18, 1945	225.5	July 3, 1945	260.9	Mar. 11, 1952	272.8
May 18	247.1	Jan. 8, 1951	271.3		

WATER-LEVEL MEASUREMENTS IN COMAL COUNTY -- CONTINUED

F52.(95). Lat. $29^{\circ}41'$, long. $98^{\circ}19'$. Depth 320 feet, diameter 6 inches.
Land-surface datum is 976.9 feet above msl.

Date	Water level	Date	Water level	Date	Water level
Apr. 27, 1945	266.8	Jan. 25, 1950	281.0	Sept. 3, 1952	276.5
May 18	276.3	Jan. 8, 1951	285.8		
July 4	276.1	Mar. 11, 1952	279.8		

F61.(261). Lat. $29^{\circ}43'$, long. $98^{\circ}12'$. Depth 304 feet, diameter 6 inches.
Land-surface datum is 916.9 feet above msl.

May 25, 1934	283.6	May 23, 1945	262.1	Mar. 11, 1952	287.6
Dec. 1, 1936	278.5	July 13	265.0	Sept. 4	288.2
Jan. 10, 1937	278.4	Jan. 4, 1951	284.5	Aug. 24, 1954	286.3

F62.(298). Lat. $29^{\circ}41'$, long. $98^{\circ}12'$. Depth 275 feet, diameter 6 inches.
Land-surface datum is 869.6 feet above msl.

May 25, 1934	228.2	Jan. 8, 1951	242.8	Aug. 25, 1954	246.9
July 2, 1945	235.0	Mar. 11, 1952	243.3		
Jan. 23, 1950	244.0	Sept. 4	245.0		

F65.(342). Lat. $29^{\circ}40'$, long. $98^{\circ}11'$. Depth 240 feet, diameter 6 inches.
Land-surface datum is 675.5 feet above msl.

Oct. 27, 1936	24.93	Mar. 12, 1952	44.14	Aug. 24, 1954	52.66
Jan. 9, 1951	41.06	Sept. 4	49.12		

F67.(299). Lat. $29^{\circ}40'$, long. $98^{\circ}12'$. Depth 89 feet, diameter 6 inches.
Land-surface datum is 714.6 feet above msl.

Dec. 4, 1936	65.42	Mar. 12, 1952	83.60	Sept. 4, 1952	87.64
Jan. 9, 1951	78.67				

F68.(251). Lat. $29^{\circ}40'$, long. $98^{\circ}14'$. Depth 255 feet, diameter 6 inches.
Land-surface datum is 886.1 feet above msl.

May 28, 1934	241.69	May 25, 1945	231.84	Jan. 23, 1950	233.22
Dec. 18, 1936	243.50	July 13	234.74	Jan. 3, 1951	249.8

WATER-LEVEL MEASUREMENTS IN COMAL COUNTY -- CONTINUED

F70.(237). Lat. $29^{\circ}41'$, long. $98^{\circ}17'$. Depth 288 feet, diameter 6 inches.
Land-surface datum is 903.7 feet above msl.

Date	Water level	Date	Water level	Date	Water level
Oct. 11, 1933	259.71	July 3, 1947	230.55	Mar. 11, 1952	269.89
May 25, 1936	255.54	Apr. 23, 1948	249.47	Sept. 3, 1952	270.8
May 25, 1945	229.80	Jan. 23, 1950	266.35	Sept. 1, 1954	267.08
July 3	232.05	Jan. 4, 1951	266.60		

F72. Lat. $29^{\circ}41'$, long. $98^{\circ}10'$. Depth 150 feet, diameter 6 inches.
Land-surface datum is 691.6 feet above msl.

Jan. 9, 1951	58.37	Mar. 12, 1952	63.20	Sept. 4, 1952	66.94
--------------	-------	---------------	-------	---------------	-------

F74. Lat. $29^{\circ}41'$, long. $98^{\circ}10'$. Diameter 6 inches. Land-surface datum is 674.4 feet above msl.

Jan. 9, 1951	40.85	Aug. 24, 1954	53.47		
--------------	-------	---------------	-------	--	--

G1.(421). Lat. $29^{\circ}49'$, long. $98^{\circ}02'$. Depth 280 feet, diameter 6 inches.
Land-surface datum is 825.8 feet above msl.

Jan. 16, 1951	232.8	Sept. 5, 1952	234.8	Aug. 23, 1954	243.2
Mar. 13, 1952	236.1				

G7.(414). Lat. $29^{\circ}48'$, long. $98^{\circ}06'$. Depth 333 feet, diameter 6 inches.
Land-surface datum is 910.7 feet above msl.

Jan. 16, 1951	300.9	Mar. 13, 1952	305.5	Sept. 5, 1952	301.3
---------------	-------	---------------	-------	---------------	-------

G9. Lat. $29^{\circ}48'$, long. $98^{\circ}02'$. Depth 250+ feet, diameter 6 inches.
Land-surface datum is 823.3 feet above msl.

Jan. 16, 1951	232.19	Sept. 5, 1952	232.84	Aug. 23, 1954	237.50
Mar. 13, 1952	234.01				

WATER-LEVEL MEASUREMENTS IN COMAL COUNTY -- CONTINUED

G10.(281). Lat. 29°48', long. 98°01'. Depth 252 feet.

Date	Water level	Date	Water level	Date	Water level
Jan. 5, 1937	27.48	June 22, 1938	58.35	Mar. 28, 1939	154.60
Dec. 15	18.31	July 20	143.30	Apr. 23	168.96
Jan. 20, 1938	14.24	Aug. 26	126.80	May 26	78.99
Feb. 7	7.93	Sept. 28	46.67	July 3	169.4
Mar. 30	114.34	Dec. 13	117.30	Oct. 4	150.33
Apr. 22	10.65	Jan. 25, 1939	97.82	Jan. 5, 1951	35.67
May 18	121.33	Feb. 28	54.67		

G13.(279). Lat 29°47', long. 98°02'. Depth 205 feet, diameter 6 inches.
Land-surface datum is 671.5 feet above msl.

Oct. 21, 1936	123.4	May 18, 1938	138.40	Dec. 13, 1938	179.73
Nov. 24, 1937	130.19	June 22	185.37	Jan. 25, 1939	161.50
Feb. 2, 1938	123.70	Aug. 26	149.60	Apr. 23	181.52
Mar. 30	158.92	Sept. 28	181.38	May 26	166.33
Apr. 22	154.18	Nov. 21	168.19		

G19.(399). Lat. 29°45', long 98°06'. Depth 181 feet, diameter 6 inches.
Land-surface datum is 783.3 feet above msl.

Dec. 20, 1937	173.32	Aug. 27, 1940	176.01	Jan. 23, 1950	174.00
Jan. 22, 1938	172.50	Sept. 23	176.50	Aug. 1	174.84
Feb. 2	170.90	Oct. 28	176.74	Dec. 7	176.24
Mar. 30	171.14	Dec. 6	175.88	Jan. 5, 1951	176.03
Apr. 22	171.46	Jan. 29, 1941	173.85	Dec. 19	177.62
May 19	168.76	Mar. 27	171.80	Mar. 13, 1952	177.82
June 23	169.39	May 23	167.33	Aug. 8	177.00
July 20	169.93	Aug. 8	168.18	Apr. 10, 1953	174.64
Aug. 30	171.20	Nov. 19	170.12	Aug. 6	176.30
Sept. 28	176.52	Mar. 6, 1942	172.30	Dec. 2	174.58
Dec. 12	172.21	Apr. 9	172.68	Apr. 30, 1954	175.49
Jan. 25, 1939	173.29	Aug. 3	172.45	July 13	177.63
Apr. 22	173.98	Dec. 7	167.36	Aug. 23	179.78
May 26	174.26	Apr. 19, 1943	171.01	Jan. 5, 1955	180.14
July 3	174.68	Dec. 20	173.22	Mar. 4	179.94
Dec. 20	176.04	Dec. 19, 1944	170.37	May 4	181.29
Jan. 24, 1940	176.19	May 23, 1945	165.71	July 12	180.94
Feb. 28	176.97	Mar. 20, 1946	171.42	Sept. 13	181.25
Mar. 22	176.35	July 6, 1947	169.54	Nov. 7	184.03
Apr. 30	176.19	Nov. 22	171.01	Jan. 6, 1956	182.74
May 28	176.18	May 2, 1948	174.59	Mar. 20	189.81
June 25	175.78	Feb. 10, 1949	175.69		
July 29	175.47	Dec. 7	173.43		

WATER-LEVEL MEASUREMENTS IN COMAL COUNTY -- CONTINUED

G22.(273). Lat. $29^{\circ}46'$, long. $98^{\circ}04'$. Depth 145 feet, diameter 6 inches.
Land-surface datum is 726.7 feet above msl.

Date	Water level	Date	Water level	Date	Water level
Oct. 20, 1936	126.9	Mar. 13, 1952	124.94	Aug. 23, 1954	125.87
Jan. 10, 1951	122.51	Sept. 5	124.70		

G23.(274). Lat. $29^{\circ}46'$, long. $98^{\circ}03'$. Depth 210 feet, diameter 6 inches.
Land-surface datum is 758.3 feet above msl.

Jan. 5, 1937	157.53	Jan. 24, 1941	152.22	Apr. 10, 1950	152.31
Dec. 15	151.49	Mar. 27	149.85	Aug. 1	153.12
Jan. 21, 1938	149.81	Nov. 18	148.23	Dec. 7	154.05
Feb. 2	151.49	Mar. 6, 1942	150.33	Jan. 5, 1951	154.30
Mar. 30	149.06	Apr. 9	150.94	Apr. 2	156.89
Apr. 22	149.27	Aug. 7	150.81	Aug. 2	156.74
May 18	146.67	Dec. 4	145.32	Dec. 19	156.48
June 22	146.78	Sept. 10, 1943	149.72	Mar. 13, 1952	157.21
July 20	148.13	Dec. 20	151.36	Aug. 8	156.20
Aug. 26	150.50	Apr. 30, 1944	146.40	Dec. 17	153.13
Sept. 28	149.12	Aug. 23	146.65	Apr. 10, 1953	153.19
Nov. 2	150.79	Dec. 18	148.51	Aug. 6	155.55
Dec. 13	151.20	May 23, 1945	144.08	Dec. 2	153.11
Jan. 24, 1939	151.83	July 6	145.60	Apr. 30, 1954	158.50
Feb. 28	154.21	Mar. 20, 1946	149.42	June 2	155.56
Mar. 28	152.91	July 5, 1947	147.22	July 13	156.63
Apr. 23	152.75	Nov. 19	150.45	Aug. 23	158.62
May 26	152.86	Apr. 24, 1948	152.25	Dec. 7	158.04
July 3	152.50	June 25	153.03	Jan. 5, 1955	158.05
Oct. 4	153.73	Aug. 6	153.10	Mar. 4	157.99
Dec. 18	156.02	Feb. 10, 1949	154.66	May 4	158.54
Jan. 23, 1940	155.10	Mar. 9	153.79	July 12	163.30
Feb. 27	154.91	Apr. 18	153.31	Sept. 13	159.14
Mar. 22	155.17	Aug. 25	151.30	Nov. 7	159.58
Apr. 29	154.52	Oct. 10	151.75	Jan. 6, 1956	159.04
June 27	154.82	Nov. 8	152.84	Mar. 20	162.44
Aug. 27	154.45	Dec. 7	151.13		
Oct. 30	155.71	Jan. 23, 1950	152.61		

G25.(278). Lat. $29^{\circ}46'$, long. $98^{\circ}03'$. Depth 210 feet, diameter 6 inches.
Land-surface datum is 752.7 feet above msl.

Oct. 20, 1936	146.63	Apr. 22, 1938	146.77	Nov. 2, 1938	148.00
Dec. 6, 1937	149.04	May 18	143.89	Dec. 13	148.50
Jan. 21, 1938	148.15	June 22	144.46	Jan. 24, 1939	148.99
Feb. 2	146.34	July 20	145.46	Feb. 28	148.99
Mar. 30	146.62	Sept. 28	148.43	Mar. 22	149.41

Continued

WATER-LEVEL MEASUREMENTS IN COMAL COUNTY -- CONTINUED

G25.(278). Continued

Date	Water level	Date	Water level	Date	Water level
Apr. 22, 1939	149.68	Sept. 10, 1943	147.16	Apr. 2, 1951	152.65
May 26	149.99	Dec. 20	148.71	Aug. 8	152.47
July 3	150.37	Apr. 30, 1944	144.03	Dec. 19	153.78
Oct. 5	151.33	Aug. 23	144.01	Mar. 13, 1952	154.28
Jan. 23, 1940	151.97	Dec. 18	145.63	Aug. 8	151.90
Feb. 27	152.08	May 22, 1945	141.02	Dec. 17	149.98
Mar. 22	152.23	July 6	143.26	Apr. 10, 1953	154.06
Apr. 29	152.32	Mar. 20, 1946	146.93	Aug. 6	152.15
May 24	152.24	July 2, 1947	146.73	Dec. 2	149.68
July 1	151.34	Nov. 19	147.74	Apr. 30, 1954	152.13
27	151.21	Apr. 23, 1948	148.40	July 13	155.07
Aug. 27	151.89	Aug. 6	151.90	Aug. 23	154.93
Sept. 27	152.56	Feb. 10, 1949	151.55	Dec. 7	155.22
Oct. 29	152.76	Aug. 25	148.67	Jan. 5, 1955	155.34
Dec. 5	151.50	Oct. 10	148.75	Mar. 4	155.05
Jan. 24, 1941	149.19	Nov. 8	149.16	May 4	155.53
Mar. 27	146.55	Dec. 7	148.50	July 12	156.98
May 23	142.35	Jan. 23, 1950	149.22	Sept. 13	156.99
Nov. 18	145.86	Apr. 10	149.43	Nov. 7	159.18
Mar. 6, 1942	147.75	Aug. 1	149.32	Jan. 6, 1956	157.54
Apr. 3	148.25	Dec. 7	151.03	Mar. 24	159.61
Apr. 19, 1943	146.51	Jan. 5, 1951	151.64		

G26.(283). Lat. 29°47', long. 98°01'. Depth 330 feet, diameter 6 inches.
Land-surface datum is 606.5 feet above msl.

Jan. 5, 1937	12.11	Mar. 13, 1952	17.27	Aug. 23, 1954	16.56
Jan. 5, 1951	16.20	Sept. 5	16.81		

G29.(398). Lat. 29°44', long. 98°08'. Depth 90 feet, diameter 5 inches.
Land-surface datum is 675.5 feet above msl.

Apr. 13, 1945	38.8	Jan. 4, 1951	52.2	July 13, 1955	55.62
May 16	36.8	Mar. 12, 1952	54.6	Nov. 7	57.62
May 23	37.2	Aug. 24, 1954	55.68	Jan. 6, 1956	57.30
24	37.9	Mar. 4, 1955	54.21		
July 2	38.8	May 4	56.23		

WATER-LEVEL MEASUREMENTS IN COMAL COUNTY -- CONTINUED

G30.(223). Lat. 29°45', long. 98°09'. Depth 320 feet, diameter 6 inches.
Land-surface datum is 840.1 feet above msl.

Date	Water level	Date	Water level	Date	Water level
Dec. 21, 1936	211.08	Apr. 9, 1942	208.04	Dec. 7, 1949	208.67
Dec. 19, 1939	214.03	Aug. 7	206.21	Jan. 23, 1950	209.85
Jan. 29, 1940	214.33	Dec. 7	199.47	Apr. 10	211.00
Feb. 27	215.66	Sept. 10, 1943	206.92	Aug. 1	212.28
Mar. 26	215.33	Dec. 18, 1944	209.89	Dec. 8	217.55
Apr. 29	214.72	Apr. 23, 1945	197.55	Jan. 4, 1951	214.72
May 24	214.84	July 6	199.18	Apr. 2	216.71
July 1	214.07	Mar. 19, 1946	209.08	Aug. 2	218.84
26	213.48	July 6, 1947	204.35	Aug. 6, 1952	219.81
Aug. 28	214.30	Nov. 23	205.28	Sept. 5	221.25
Oct. 29	215.19	Apr. 23, 1948	208.62	Dec. 16	212.05
Dec. 5	215.06	June 25	210.06	Apr. 10, 1953	211.80
Jan. 29, 1941	212.99	Aug. 11	210.75	Nov. 30	212.99
Aug. 15	203.05	Feb. 10, 1949	213.60	Apr. 30, 1954	214.72
Nov. 18	204.75	Apr. 19	212.84	Nov. 7, 1955 ^b	226.04
Mar. 6, 1942	207.41	Aug. 25	209.20	Jan. 6, 1956	223.93

G31.(225). Lat. 29°44', long. 98°10'. Depth 265 feet, diameter 6 inches.
Land-surface datum is 809.1 feet above msl.

Oct. 28, 1936	187.27	Nov. 18, 1941	171.16	June 25, 1948	176.70
Dec. 18, 1939	182.61	Mar. 6, 1942	174.29	Aug. 11	177.72
Jan. 29, 1940	182.00	Apr. 9	174.96	Feb. 10, 1949	181.00
Feb. 27	182.22	Aug. 7	173.53	Apr. 19	180.70
Mar. 26	182.47	Dec. 7	163.9	Aug. 25	176.80
Apr. 29	182.52	Apr. 20, 1943	170.41	Dec. 7	176.85
May 24	182.69	Sept. 10	173.68	Jan. 23, 1950	177.35
June 27	182.04	Dec. 20	175.95	Apr. 10	178.45
July 29	181.50	May 2, 1944	169.61	Aug. 1	179.72
Aug. 28	182.10	Aug. 23	167.48	Dec. 8	183.14
Sept. 26	182.65	Dec. 18	171.04	Jan. 4, 1951	182.45
Oct. 29	183.03	May 23, 1945	162.02	Apr. 2	183.33
Dec. 5	183.06	July 3	163.85	Aug. 2	183.81
Jan. 29, 1941	181.11	Mar. 19, 1946	171.99	Dec. 19	185.42
Mar. 28	178.27	July 6, 1947	165.91	Mar. 12, 1952	185.94
May 23	170.55	Nov. 23	171.30	Aug. 6	186.70
Aug. 15	168.10	Apr. 23, 1948	175.32	Sept. 5	185.19

Continued

WATER LEVEL MEASUREMENTS IN COMAL COUNTY -- CONTINUED

G31.(225). Continued

Date	Water level	Date	Water level	Date	Water level
Dec. 16, 1952	179.35	Jan. 5, 1955	186.81	Nov. 7, 1955	188.46
Apr. 10, 1953	179.13	Mar. 4	187.01	Jan. 6, 1956	186.66
Aug. 6	182.35	May 4	192.26	Mar. 20	189.19
Aug. 23, 1954	185.21	July 12	195.46		
Dec. 12	186.67	Sept. 13	192.04		

G32.(222). Lat. 29°44', long. 98°08'. Depth 190 feet, diameter 6 inches.
Land-surface datum is 806.5 feet above msl.

Dec. 19, 1939	182.50	Apr. 9, 1942	177.24	Apr. 2, 1951	184.40
Jan. 29, 1940	182.71	Aug. 7	176.73	Aug. 8	185.90
Feb. 27	182.82	Dec. 7	170.46	Dec. 19	186.63
Mar. 26	182.99	Apr. 19, 1943	174.58	Mar. 12, 1952	186.68
Apr. 29	182.87	Sept. 10	176.76	Aug. 6	185.65
May 24	183.04	Dec. 20	178.59	Dec. 16	182.40
July 1	181.96	Apr. 30, 1944	173.10	Apr. 10, 1953	181.41
29	181.99	Aug. 23	172.50	Aug. 6	183.81
Aug. 28	182.79	Dec. 18	174.58	Nov. 30	182.28
Sept. 23	183.28	Apr. 23, 1945	168.68	July 12, 1955	188.07
Oct. 29	183.62	July 3	170.50	Sept. 13	188.71
Jan. 24, 1941	181.50	Mar. 19, 1946	175.30	Nov. 11	189.20
Mar. 28	178.43	June 25, 1948	179.59	Jan. 6, 1956	188.57
May 23	172.53	Dec. 7, 1949	178.35	Mar. 20	189.64
Nov. 19	174.41	Aug. 1, 1950	181.37		
Mar. 6, 1942	176.72	Dec. 8	184.55		

G33.(221). Lat. 29°41', long. 98°08'. Depth 186 feet, diameter 6 inches.
Land-surface datum is 793.0 feet above msl.

Nov. 3, 1936	170.0	Aug. 7, 1942	163.09	Mar. 19, 1946	161.94
Dec. 19, 1939	169.46	Dec. 7	157.73	Nov. 23, 1947	162.22
Jan. 1, 1940	169.71	Apr. 19, 1943	161.09	Apr. 24, 1948	172.77
Mar. 26	169.89	Sept. 10	162.99	June 25	166.06
Apr. 29	169.73	Dec. 20	165.00	Feb. 10, 1949	169.00
May 24	169.96	Apr. 30, 1944	165.90	Apr. 18	167.54
Aug. 28	169.64	Aug. 23	159.19	Aug. 25	165.01
Sept. 23	170.20	Dec. 18	161.04	Dec. 7	164.50
Aug. 15, 1941	161.33	May. 23, 1945	155.72	Jan. 23, 1950	165.80
Apr. 9, 1942	163.91	July 2	157.05	Apr. 10	166.60

Continued

WATER LEVEL MEASUREMENTS IN COMAL COUNTY -- CONTINUED

G33.(221). Continued

Date	Water level	Date	Water level	Date	Water level
Aug. 1, 1950	167.69	Sept. 5, 1952	173.25	July 13, 1954	174.92
Jan. 4, 1951	170.35	Dec. 16	167.38	Sept. 1	175.85
Aug. 2	171.46	Apr. 10, 1953	167.34	Dec. 7	174.72
Dec. 19	177.81	Aug. 6	170.16		
Mar. 12, 1952	173.06	Apr. 30, 1954	170.96		

G34.(271). Lat. 29°45', long. 98°05'. Depth 140 feet, diameter 6 inches.
Land-surface datum is 700.6 feet above msl.

Dec. 30, 1936	89.60	May 29, 1940	92.36	June 23, 1947	86.64
Dec. 15, 1937	90.11	June 27	92.01	Nov. 19	89.21
Jan. 22, 1938	89.51	July 29	91.86	Apr. 24, 1948	90.54
Feb. 2	88.23	Aug. 27	92.31	June 25	90.99
Mar. 30	88.36	Sept. 27	92.68	Aug. 6	91.21
Apr. 22	88.56	Oct. 29	92.79	Feb. 10, 1949	92.06
May 18	86.40	Dec. 5	92.13	Mar. 9	91.67
June 22	86.86	Jan. 24, 1941	90.58	Apr. 18	91.33
July 20	87.44	May 23	85.19	Aug. 25	89.90
Sept. 28	89.08	Aug. 8	85.92	Oct. 10	90.39
Nov. 2	89.39	Nov. 18	87.84	Nov. 8	89.70
Dec. 13	90.76	Mar. 6, 1942	89.31	Dec. 7	89.90
Jan. 24, 1939	90.09	Apr. 3	89.56	Jan. 23, 1950	90.30
Feb. 28	90.16	Aug. 7	89.41	Apr. 10	90.60
Mar. 28	90.18	Dec. 4	85.23	Aug. 1	91.09
Apr. 23	90.41	Apr. 19, 1943	88.23	Dec. 7	92.12
May 26	90.91	Sept. 10	88.81	Jan. 5, 1951	92.27
July 3	90.74	Dec. 20	90.07	Apr. 2	92.64
Oct. 4	92.57	Apr. 30, 1944	86.57	Aug. 2	92.81
Dec. 18	91.78	Aug. 23	86.50	Dec. 19	93.36
Jan. 23, 1940	92.22	Dec. 18	87.76	Mar. 13, 1952	93.64
Feb. 27	92.40	May 22, 1945	83.64	Aug. 8	94.26
Mar. 22	92.48	July 6	85.23	Sept. 5	93.68
Apr. 27	92.38	Mar. 20, 1946	88.48	Dec. 17	91.43

Continued

WATER-LEVEL MEASUREMENTS IN COMAL COUNTY -- CONTINUED

G34.(271). Continued

Date	Water level	Date	Water level	Date	Water level
Apr. 10, 1953	91.47	Aug. 23, 1954	95.23	Sept. 13, 1955	95.02
Aug. 6	92.87	Dec. 7	94.22	Nov. 7	95.23
Dec. 2	91.68	Jan. 5, 1955	94.22	Jan. 6, 1956	95.09
Apr. 30, 1954	92.88	Mar. 4	94.12	Mar. 20	95.64
June 2	93.12	May 4	94.60		
July 13	93.62	July 12	94.67		

G43.(291). Lat. $29^{\circ}44'$, long. $98^{\circ}06'$. Depth 65 feet, diameter 6 inches.
Land-surface datum is 672.2 feet above msl.

Oct. 21, 1936	51.23	Mar. 22, 1940	55.04	Aug. 23, 1944	51.21
Dec. 6, 1937	52.93	Apr. 27	54.99	Dec. 19	51.46
Jan. 21, 1938	52.39	June 27	54.53	May 23, 1945	49.92
Feb. 2	51.43	July 29	54.72	July 6	50.04
Mar. 30	51.53	Aug. 27	55.18	Mar. 20, 1946	51.91
May 18	49.76	Sept. 23	55.42	July 6, 1947	52.25
July 19	51.23	Oct. 28	55.43	Nov. 22	52.93
Aug. 26	51.80	Dec. 5	54.80	Aug. 6, 1948	54.91
Sept. 28	52.22	Jan. 24, 1941	53.76	Feb. 10, 1949	55.47
Nov. 2	52.57	Mar. 28	52.18	Mar. 9	55.03
Dec. 12	52.77	May 23	49.47	Apr. 18	54.90
Jan. 24, 1939	53.02	Aug. 8	50.44	Aug. 25	53.86
Feb. 28	53.26	Nov. 14	51.41	Oct. 10	53.84
Mar. 28	53.37	Mar. 6, 1942	52.46	Nov. 8	53.38
Apr. 23	53.64	Apr. 3	52.73	Dec. 7	53.68
May 26	53.89	Aug. 7	52.71	Jan. 23, 1950	54.01
July 3	55.01	Dec. 4	49.57	Apr. 10	54.32
Oct. 5	54.65	Apr. 19, 1943	51.77	Aug. 1	54.92
Dec. 18	54.78	Sept. 10	52.49	Dec. 7	55.65
Jan. 24, 1940	54.85	Dec. 20	55.82	Jan. 4, 1951	55.77
Feb. 27	54.95	Apr. 30, 1944	50.93		

G45.(292). Lat. $29^{\circ}43'$, long. $98^{\circ}08'$. Depth 85 feet, diameter 6 inches.
Land-surface datum is 670.0 feet above msl.

Oct. 28, 1936	53.99	Aug. 24, 1954	61.83	Sept. 13, 1955	62.68
Jan. 5, 1951	57.35	Mar. 4, 1955	61.27	Nov. 7	62.92
Mar. 12, 1952	60.30	May 4	62.10	Jan. 6, 1956	62.50
Sept. 5	61.06	July 13	63.23	Mar. 20	62.90

WATER-LEVEL MEASUREMENTS IN COMAL COUNTY--CONTINUED

G48. Lat. $29^{\circ}43'$, long. $98^{\circ}07'$. Diameter 6 inches. Land-surface datum is 647.8 feet above msl.

Date	Water level	Date	Water level	Date	Water level
Jan. 6, 1937	119.55	May 24, 1945	122.3	Nov. 23, 1947	124.05
Apr. 13, 1945	121.90	July 2	122.75	June 25, 1948	124.84
May 19	122.1	July 5, 1947	122.97	Jan. 4, 1951	125.13

G49. (431). Lat. $29^{\circ}42'$, long. $98^{\circ}08'$. Depth 230^{\pm} feet, diameter 7 inches. Cased to 27 feet. Land-surface datum is 642.7 feet above msl. Monthly highest reading from recorder graph.

Nov. 25, 1948	18.32	Aug. 1, 1951	19.82	Jan. 2, 1954	19.60
Dec. 1	18.30	Sept. 30	19.76	Feb. 1	19.80
Jan. 1, 1949	18.41	Oct. 31	19.75	Mar. 1	20.14
Feb. 1	18.49	Nov. 4	19.21	Apr. 17	20.61
Mar. 9	* 18.21	Dec. 4	19.68	May 4	20.68
Apr. 20	* 18.12	Jan. 8, 1952	19.71	June 1	20.88
May 16	* 16.89	Feb. 27	19.81	July 5	21.17
June 16	* 17.11	Mar. 6	19.77	Aug. 2	21.69
July 15	* 17.31	Apr. 23	19.66	Sept. 3	21.96
Aug. 25	* 17.75	May 2	19.73	Oct. 10	21.46
Sept. 14	* 17.92	June 2	19.89	Nov. 26	21.12
Feb. 16, 1950	17.54	July 5	20.14	Dec. 29	21.03
Mar. 10	17.51	Aug. 4	20.36	Jan. 24, 1955	20.85
Apr. 26	17.83	Sept. 10	19.22	Feb. 26	20.77
May 2	17.82	Oct. 2	20.02	Mar. 1	20.80
June 5	17.76	Nov. 29	19.58	Apr. 1	21.16
July 2	18.11	Dec. 31	19.20	May 22	21.38
Aug. 1	18.35	Jan. 8, 1953	19.06	June 6	21.40
Sept. 5	18.40	Feb. 1	19.39	July 17	22.25
Oct. 1	18.39	Mar. 1	19.59	Aug. 15	22.44
Nov. 19	18.49	Apr. 6	19.68	Sept. 11	22.49
Dec. 1	18.59	May 24	20.09	Oct. 11	22.41
Jan. 2, 1951	18.59	June 1	20.34	Nov. 27	22.11
Feb. 1	18.81	July 5	20.65	Dec. 26	21.89
Mar. 2	18.80	Aug. 30	20.47	Jan. 29, 1956	21.78
Apr. 1	18.86	Sept. 22	19.87	Feb. 12	21.70
May 22	19.06	Oct. 25	19.68	Mar. 1	22.05
June 4	18.91	Nov. 18	19.69		
July 1	19.29	Dec. 1	19.43		

* Tape measurement.

WATER-LEVEL MEASUREMENTS IN COMAL COUNTY -- CONTINUED

G51.(397). Lat. 29°42', long. 98°09'. Depth 220 feet, diameter 6 inches.
Land-surface datum is 843.5 feet above msl.

Date	Water level	Date	Water level	Date	Water level
Dec. 20, 1943	204.7	July 2, 1945	202.3	Mar. 12, 1952	215.8
May 17, 1945	200.9	Jan. 4, 1951	211.9	Apr. 30, 1954	212.5

G53.(266). Lat. 29°42', long. 98°08'. Depth 152 feet, diameter 6 inches.
Land-surface datum is 736.1 feet above msl.

Jan. 6, 1937	100.8	July 5, 1947	111.58	Mar. 12, 1952	115.22
Apr. 13, 1945	110.09	Nov. 23	112.65	Sept. 4	115.90
May 19	110.06	Apr. 24, 1948	113.30	Aug. 24, 1954	116.27
24	110.34	Jan. 23, 1950	113.20		
July 2	110.85	Jan. 4	114.20		

G67.(393). Lat. 29°41', long. 98°09'. Depth 502 feet, diameter 6 inches.
Land-surface datum is 649.2 feet above msl.

Dec. 20, 1943	16.0	July 5, 1947	10.0	Jan. 4, 1951	17.3
May 30, 1945	6.6	Nov. 22	12.2	Mar. 12, 1952	22.1
July 4	7.9	May 2, 1948	16.1	Sept. 4	26.1
13	9.0	Jan. 23, 1950	11.3	Aug. 24, 1954	27.5

G69.(352). Lat. 29°42', long. 98°05'. Depth 427 feet, diameter 6 inches.
Land-surface datum is 653.2 feet above msl.

Jan. 10, 1951	33.68	Sept. 5, 1952	38.21	Aug. 23, 1954	39.18
Mar. 12, 1952	35.80				

G77.(373). Lat. 29°40', long. 98°09'. Depth 485 feet, diameter 6 inches.
Land-surface datum is 661.5 feet above msl.

Dec. 4, 1936	16.44	July 3, 1939	24.65	Aug. 11, 1941	19.76
Dec. 15, 1937	19.99	Oct. 5	25.13	Nov. 14	19.81
Jan. 21, 1938	19.46	Mar. 22, 1940	25.41	Mar. 6, 1942	21.10
Feb. 2	18.27	Apr. 26	24.94	Apr. 9	20.34
Mar. 30	18.33	May 23	26.00	Aug. 7	22.19
Apr. 22	18.95	Sept. 24	27.02	Dec. 3	16.82
May 19	17.25	Oct. 29	27.06	Apr. 20, 1943	20.36
Jan. 25, 1939	21.87	Jan. 29, 1941	24.45	Dec. 21	23.11
Apr. 23	23.41	Mar. 25	21.39	Aug. 24, 1944	22.98
May 26	23.90	May 23	17.33	Dec. 19	21.61

Continued

WATER LEVEL-MEASUREMENTS IN COMAL COUNTY -- CONTINUED

G77.(373). Continued

Date	Water level	Date	Water level	Date	Water level
May 23, 1945	18.83	Nov. 8, 1949	25.73	Dec. 16, 1952	33.20
July 13	20.14	Dec. 7	25.96	Apr. 10, 1953	33.11
Mar. 19, 1946	22.24	Jan. 23, 1950	26.02	Aug. 6	38.08
July 5, 1947	21.75	Apr. 10	26.40	Nov. 30	33.38
Nov. 22	24.45	Aug. 1	27.91	Apr. 30, 1954	36.13
Apr. 24, 1948	26.67	Dec. 8	29.05	June 2	36.27
June 25	28.97	Jan. 3, 1951	29.03	July 13	37.81
Aug. 6	29.03	Apr. 2	30.14	Aug. 23	40.42
Feb. 11, 1949	29.46	Aug. 2	32.86	Dec. 12	37.67
Mar. 9	28.72	Dec. 19	32.94	Jan. 5, 1955	37.74
Apr. 20	28.40	Mar. 12, 1952	33.27	Mar. 4	36.59
Aug. 25	26.16	Aug. 5	34.68	May 4	39.17
Oct. 10	27.31	Sept. 4	37.41		

G78.(372). Lat. 29°40', long. 98°09'. Depth 510 feet, diameter 6 inches.
Land-surface datum is 715.9 feet above msl.

Oct. 26, 1936	73.80	Mar. 12, 1952	90.18	Aug. 23, 1954	96.01
Jan. 10, 1951	86.50	Sept. 5	94.01		

G79. Lat. 29°48', long. 98°04'. Depth 307 feet, diameter 6 inches.
Land-surface datum is 841.5 feet above msl.

Jan. 16, 1951	238.13	Sept. 5, 1952	238.64	Aug. 23, 1954	240.10
Mar. 13, 1952	240.15				

G82. Lat. 29°41', long. 98°09'. Depth 148 feet, diameter 6 inches.
Land-surface datum is 763.2 feet above msl.

Jan. 10, 1951	131.90	Sept. 4, 1952	139.32	Aug. 24, 1954	141.61
Mar. 12, 1952	135.63				

H2.(375). Lat. 29°39', long. 98°09'. Depth 450 feet, diameter 6 inches.
Land-surface datum is 733.9 feet above msl.

Oct. 26, 1936	92.67	Mar. 11, 1952	106.88	Aug. 23, 1954	114.86
Jan. 9, 1951	102.64	Sept. 4	110.84		

WATER-LEVEL MEASUREMENTS IN COMAL COUNTY -- CONTINUED

H5.(339). Lat. $29^{\circ}39'$, long. $98^{\circ}09'$. Depth 463 feet, diameter 6 inches.
Land-surface datum is 666.8 feet above msl.

Date	Water level	Date	Water level	Date	Water level
May 24, 1934	15.90	Aug. 6, 1935	15.90	Dec. 3, 1936	9.41
Oct. 8	19.07	10	15.00		

H6.(336). Lat. $29^{\circ}39'$, long. $98^{\circ}11'$. Depth 700 feet, diameter 6 inches.
Land-surface datum is 728.2 feet above msl.

May 28, 1934	69.94	Sept. 26, 1940	88.75	Oct. 10, 1949	89.79
Oct. 26, 1936	77.08	Oct. 29	88.63	Nov. 8	87.34
Dec. 15, 1937	80.52	Dec. 4	87.31	Dec. 7	87.71
Jan. 21, 1938	79.43	Jan. 29, 1941	85.37	Jan. 23, 1950	87.95
Feb. 2	77.85	Mar. 25	81.78	Apr. 10	88.99
Mar. 30	78.13	May 23	78.14	Aug. 1	91.62
Apr. 22	78.87	Aug. 7	79.72	Dec. 8	92.13
May 19	76.83	Nov. 14	79.77	Jan. 3, 1951	92.14
June 23	78.16	Mar. 6, 1942	81.19	Apr. 2	93.68
July 20	80.00	Apr. 9	81.69	Aug. 2	97.89
Aug. 25	80.76	Aug. 6	82.61	Dec. 19	96.64
Sept. 28	82.66	Dec. 3	76.70	Mar. 12, 1952	97.32
Dec. 12	82.18	Apr. 20, 1943	80.67	Aug. 5	101.05
Jan. 24, 1939	83.20	Sept. 10	84.11	Sept. 4	102.99
Feb. 28	82.66	Dec. 21	84.19	Dec. 16	97.58
Mar. 28	83.26	Aug. 24, 1944	83.97	Apr. 10, 1953	97.09
Apr. 22	84.18	Dec. 19	81.87	Aug. 6	104.17
May 26	84.94	May 23, 1945	78.44	Nov. 30	97.16
July 3	86.96	July 4	80.05	Apr. 30, 1954	100.91
Oct. 5	86.60	Mar. 19, 1946	83.66	June 2	101.58
Dec. 19	86.05	July 5, 1947	82.76	July 13	103.77
Jan. 30, 1940	85.72	Nov. 22	85.58	Sept. 1	106.58
Feb. 20	86.07	Apr. 24, 1948	89.00	Dec. 7	104.62
Mar. 22	86.74	June 25	91.32	Jan. 5, 1955	104.77
Apr. 30	86.94	Aug. 6	92.30	July 12	107.00
May 23	87.46	Feb. 11, 1949	92.27	Sept. 13	107.84
June 21	86.97	Mar. 9	90.54	Nov. 7	107.86
July 25	86.81	Apr. 20	86.05	Mar. 20, 1956	109.73
Aug. 28	88.40	Aug. 25	90.20		

H8.(306). Lat. $29^{\circ}38'$, long. $98^{\circ}14'$. Depth 360 feet, diameter 6 inches.
Land-surface datum is 724.7 feet above msl.

Dec. 18, 1936	67.22	Mar. 11, 1952	98.41	Aug. 26, 1954	124.70
Jan. 3, 1951	93.55	Sept. 4	123.2		

WATER-LEVEL MEASUREMENTS IN COMAL COUNTY -- CONTINUED

H14.(243). Lat. 29°38', long. 98°19'. Depth 326 feet, diameter 6 inches.
Land-surface datum is 967.4 feet above msl.

Date	Water level	Date	Water level	Date	Water level
Oct. 11, 1933	306.8	July 4, 1945	294.5	Jan. 3, 1951	319.8
May 5, 1945	291.2	July 3, 1947	295.4	Mar. 11, 1952	327.1
18	290.5	Jan. 25, 1950	311.6	Sept. 3	332.2

H20.(326). Lat. 29°38', long. 98°13'. Depth 300 feet, diameter 4 inches.
Land-surface datum is 684.5 feet above msl.

May 24, 1934	34.48	Jan. 29, 1941	36.64	Apr. 10, 1950	40.35
Jan. 7, 1937	28.48	Mar. 25	31.93	Aug. 1	44.05
Jan. 21, 1938	30.41	May 23	27.38	Dec. 8	44.91
Feb. 2	29.00	Aug. 7	30.52	Jan. 3, 1951	45.12
Mar. 30	29.37	Nov. 14	30.40	Apr. 2	46.42
Apr. 22	29.61	Mar. 6, 1942	31.66	Aug. 2	51.51
May 19	27.47	Apr. 9	32.27	Dec. 19	50.17
June 23	29.44	Aug. 7	33.94	Mar. 12, 1952	50.82
July 20	30.93	Apr. 20, 1943	31.70	Aug. 5	55.29
Aug. 25	33.00	Sept. 10	34.68	Sept. 4	57.06
Sept. 28	32.45	Dec. 21	35.50	Dec. 16	49.58
Jan. 24, 1939	33.45	Aug. 24, 1944	35.19	Apr. 10, 1953	51.02
Feb. 28	34.88	Dec. 19	31.97	Aug. 6	58.30
Mar. 28	34.29	May 23, 1945	28.76	Nov. 30	50.44
Apr. 23	35.67	July 4	31.34	Apr. 30, 1954	54.86
May 26	36.78	Mar. 19, 1946	32.94	June 2	55.83
July 3	38.65	July 5, 1947	33.90	July 13	57.92
Oct. 5	38.57	Nov. 22	36.66	Aug. 23	60.12
Jan. 30, 1940	37.37	Apr. 24, 1948	40.17	Dec. 7	56.67
Feb. 20	37.53	June 25	42.18	Jan. 5, 1955	55.11
Mar. 22	38.42	Aug. 6	43.91	Mar. 4	55.66
Apr. 26	38.84	Feb. 11, 1949	43.74	May 4	60.81
May 23	38.95	Mar. 9	42.14	July 12	61.88
June 21	38.12	Apr. 20	41.70	Sept. 13	61.99
July 25	38.34	Aug. 25	40.60	Nov. 7	62.59
Aug. 28	40.34	Oct. 10	41.65	Jan. 6, 1956	59.72
Sept. 24	40.54	Nov. 8	38.44	Mar. 20	61.17
Oct. 29	39.76	Dec. 7	39.06		
Dec. 4	38.48	Jan. 23, 1950	39.77		

H22.(332). Lat. 29°39', long. 98°11'. Depth 395 feet, diameter 6 inches.
Land-surface datum is 728.6 feet above msl.

May 28, 1934	82.86	Nov. 21, 1935	77.14	Jan. 8, 1951	92.22
Oct. 8	85.24	Jan. 19, 1936	78.21	Aug. 23, 1954	109.04
Aug. 9, 1935	73.63	Dec. 18	79.61		

WATER-LEVEL MEASUREMENTS IN COMAL COUNTY -- CONTINUED

H23.(333). Lat. 29°39', long. 98°12'. Depth 428 feet, diameter 6 inches.
Land-surface datum is 694.7 feet above msl.

Date	Water level	Date	Water level	Date	Water level
May 28, 1934	53.00	Jan. 19, 1936	31.92	July 5, 1947	18.06
Oct. 9	43.25	Dec. 3	29.49	Nov. 23	28.99
Aug. 10, 1935	35.50	Jan. 7, 1937	36.58		
Nov. 21	30.96	July 13, 1945	34.58		

H28.(319). Lat. 29°38', long. 98°14'. Depth 350 feet, diameter 6 inches.
Land-surface datum is 786.5 feet above msl.

May 24, 1934	134.0	Jan. 9, 1951	145.1	Aug. 23, 1954	162.6
Dec. 3, 1936	127.4	Mar. 11, 1952	154.6		
Jan. 7, 1937	128.9	Sept. 4	158.4		

H31.(244). Lat. 29°37', long. 98°19'. Depth 240 feet, diameter 8 inches.
Land-surface datum is 844.2 feet above msl.

Dec. 17, 1936	174.8	July 3, 1947	170.9	Jan. 3, 1951	194.2
May 5, 1945	174.6	Nov. 23	182.0	Aug. 27, 1954	211.6
18	165.6	Apr. 23, 1948	185.9		
July 4	170.7	Jan. 25, 1950	191.0		

H34.(380). Lat. 29°37', long. 98°19'. Depth 185 feet, diameter 6 inches.
Land-surface datum is 804.6 feet above msl.

May 5, 1945	130.6	Nov. 23, 1947	145.1	Sept. 3, 1952	170.5
18	132.0	Apr. 23, 1948	149.0	Aug. 27, 1954	175.7
July 4	135.3	Jan. 3, 1951	156.6		
July 3, 1947	135.1	Mar. 11, 1952	164.8		

H39.(430). Lat. 29°37', long. 98°18'. Depth 250 feet, diameter 6 inches.
Land-surface datum is 851.7 feet above msl. Monthly highest reading from recorder graph.

Dec. 10, 1948	203.5	July 4, 1949	195.2	Feb. 24, 1950	197.4
Jan. 3, 1949	203.7	Aug. 5	197.6	Mar. 5	197.5
Feb. 28	202.7	Sept. 1	200.3	Apr. 12	199.1
Mar. 26	201.9	Oct. 31	197.0	May 1	199.2
Apr. 30	194.5	Nov. 1	197.0	June 7	198.7
May 16	192.9	Dec. 19	198.0	July 3	201.5
June 1	194.1	Jan. 3, 1950	198.0	Aug. 19	203.6

Continued

WATER-LEVEL MEASUREMENTS IN COMAL COUNTY -- CONTINUED

H39.(430). Continued

Date	Water level	Date	Water level	Date	Water level
Sept. 28, 1950	204.5	July 2, 1952	216.0	June 1, 1954	219.1
Oct. 1	204.6	Aug. 1	218.2	July 1	220.9
Nov. 19	204.9	Sept. 30	215.0	Aug. 9	224.9
Dec. 4	205.0	Oct. 1	214.9	Sept. 29	225.2
Jan. 1, 1951	205.0	Nov. 29	213.4	Oct. 31	222.2
Feb. 28	206.2	Dec. 7	211.6	Nov. 23	220.5
Mar. 1	206.2	Feb. 10, 1953	210.3	Dec. 31	220.1
Apr. 1	207.0	Mar. 1	210.7	Jan. 24, 1955	219.0
May 27	207.4	Apr. 6	212.6	Feb. 22	218.7
June 7	206.8	May 1	213.7	Mar. 1	218.9
July 1	210.0	June 1	217.2	Apr. 1	220.9
Aug. 1	213.6	July 21	221.8	May 23	221.9
Sept. 30	212.9	Aug. 31	219.1	June 1	223.4
Oct. 30	212.8	Sept. 15	212.6	July 5	226.9
Nov. 27	212.3	Oct. 31	213.3	Aug. 15	227.2
Dec. 2	212.1	Nov. 11	212.4	Sept. 5	227.5
Jan. 7, 1952	212.3	Dec. 21	211.5	Oct. 12	227.2
Feb. 29	213.0	Jan. 1, 1954	211.7	Nov. 27	225.4
Mar. 3	212.8	Feb. 1	212.8	Dec. 26	224.3
Apr. 26	212.5	Mar. 1	215.3	Jan. 29, 1956	223.9
May 1	213.0	Apr. 19	217.8	Feb. 13	223.5
June 2	214.1	May 4	217.9	Mar. 1	225.2

H43.(320). Lat. 29°37', long. 98°14'. Depth 400 feet, diameter 6 inches.

Nov. 24, 1936	62.98	Mar. 30, 1938	61.26	Dec. 12, 1938	71.80
Dec. 15, 1937	63.21	Apr. 22	53.35	Jan. 24, 1939	70.04
Jan. 21, 1938	42.74	May 19	44.42	Feb. 28	70.84
Feb. 2	53.05	Aug. 25	67.86	Mar. 28	73.38

H44.(397). Lat. 29°37', long. 98°15'. Depth 378 feet, diameter 6 inches.
Land-surface datum is 836.5 feet above msl.

Dec. 9, 1937	178.95	Feb. 28, 1939	181.28	May 23, 1945	175.61
Jan. 21, 1938	179.05	Mar. 28	181.50	June 21, 1948	191.71
Feb. 2	175.50	Apr. 22	182.76	July 2	191.79
Mar. 30	175.56	May 25	183.85	Aug. 6	192.18
Apr. 22	176.24	July 4	184.15	Feb. 11, 1949	193.44
May 19	175.10	Oct. 5	188.18	Mar. 9	192.78
June 23	176.10	Dec. 19	185.9	Jan. 23, 1950	191.50
July 19	177.18	Jan. 30, 1940	185.59	Apr. 10	192.60
Aug. 25	177.20	May 23	187.41	Aug. 1	197.80
Dec. 12	177.10	June 21	187.35	Dec. 8	193.60
Jan. 24, 1939	180.87	Aug. 24, 1944	182.08	Jan. 3, 1951	193.80

Continued

WATER-LEVEL MEASUREMENTS IN COMAL COUNTY -- CONTINUED

H44.(397). Continued.

Date	Water level	Date	Water level	Date	Water level
Apr. 2, 1951	195.20	Aug. 6, 1953	207.57	Mar. 4, 1955	206.78
Aug. 2	200.36	Nov. 30	201.71	May 4	210.22
Mar. 11, 1952	200.84	June 2, 1954	205.71	July 12	212.70
Aug. 5	209.14	July 13	208.57	Sept. 13	214.61
Sept. 4	211.51	Aug. 23	211.80	Nov. 7	214.59
Dec. 16	201.83	Dec. 7	210.14	Jan. 6, 1956	211.67
Apr. 10, 1953	200.92	Jan. 5, 1955	208.36	Mar. 20	214.17

H46.(318). Lat. $29^{\circ}36'$, long. $98^{\circ}17'$. Depth 476 feet, diameter 6 to 4 inches. Land-surface datum is 809.6 feet above msl.

Nov. 24, 1936	155.0	Dec. 6, 1944	149.3	Jan. 9, 1951	164.5
---------------	-------	--------------	-------	--------------	-------

H48. Lat. $29^{\circ}36'$, long. $98^{\circ}16'$. Depth over 300 feet, diameter 6 inches. Land-surface datum is 825.1 feet above msl.

Jan. 9, 1951	181.73	Sept. 4, 1952	194.55	Aug. 27, 1954	200.70
Mar. 11, 1952	186.87				

a/ Pumping
 b/ Pumped Recently.

WATER-LEVEL MEASUREMENTS IN GUADALUPE COUNTY, TEXAS

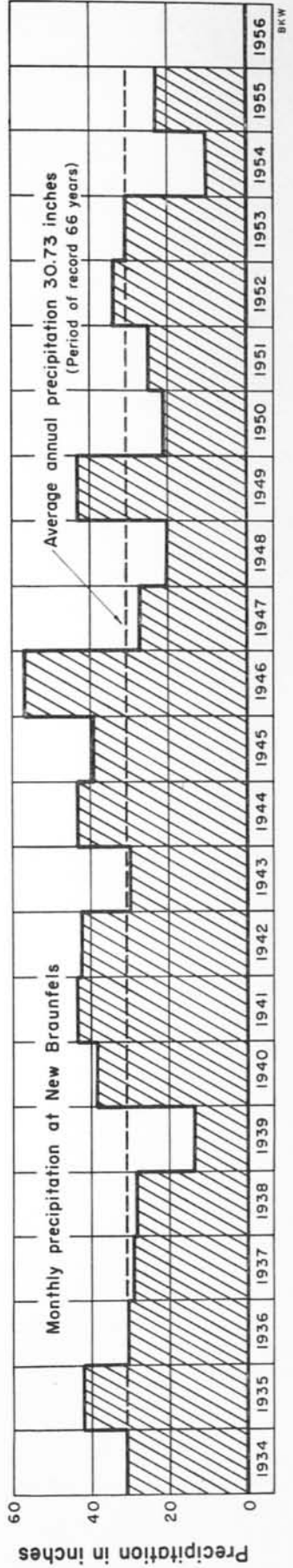
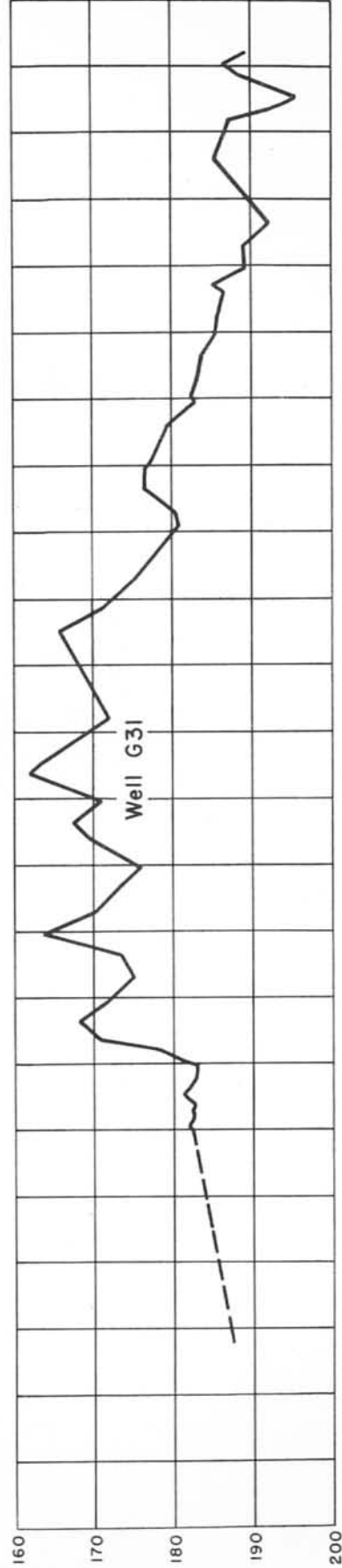
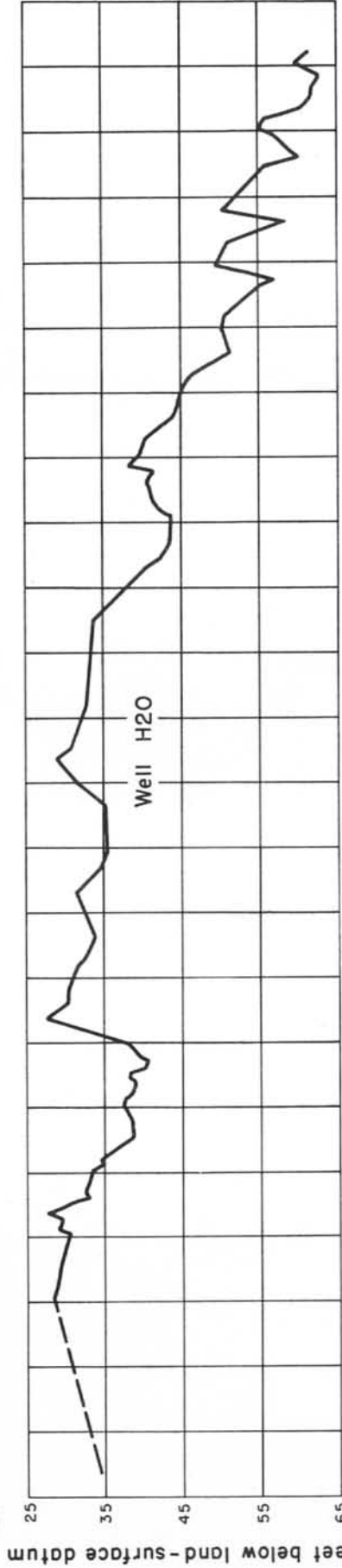
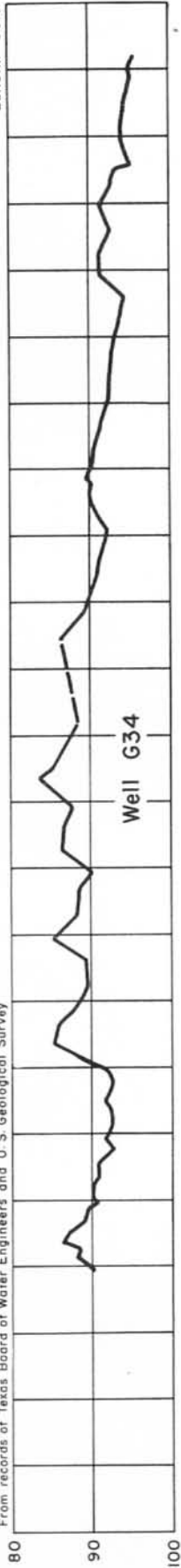
316. Lat. $29^{\circ}35'$, long. $98^{\circ}18'$. Depth 310 feet, diameter 4 inches.
Land-surface datum is 770.0 feet above msl.

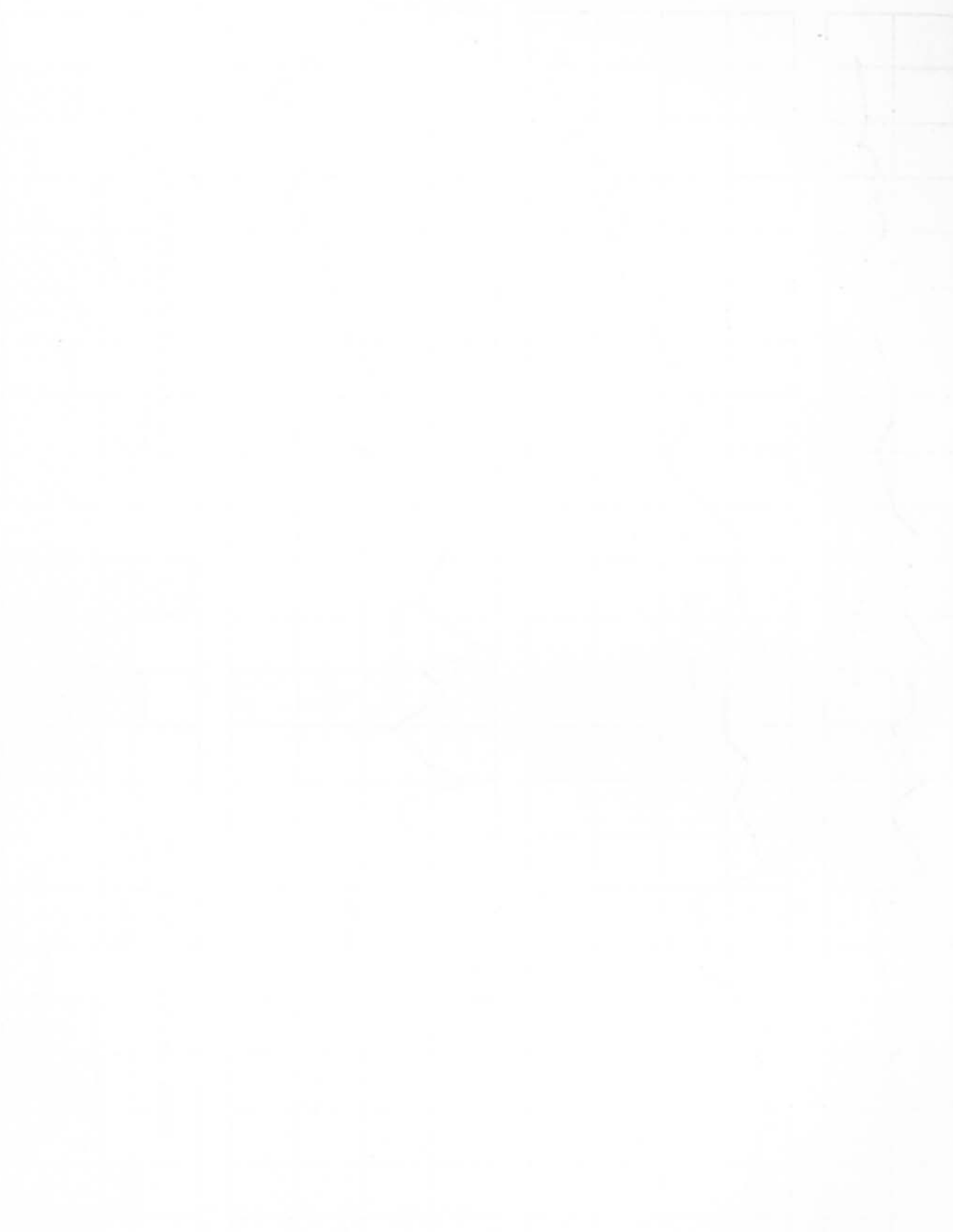
Date	Water level	Date	Water level	Date	Water level
Oct. 2, 1933	107.65	Oct. 5, 1939	116.13	Apr. 9, 1943	106.34
Dec. 12, 1936	100.22	Dec. 19	112.82	Aug. 6	109.96
Jan. 16, 1937	100.79	Jan. 30, 1940	112.67	Apr. 20, 1943	105.70
Dec. 15	105.76	Feb. 20	112.96	Sept. 3	110.24
Jan. 21, 1938	103.55	Mar. 22	115.06	Dec. 21	110.41
Feb. 2	108.35	Apr. 30	114.56	Aug. 24, 1944	110.71
Mar. 30	102.61	May 23	114.80	Dec. 19	105.43
Apr. 22	104.99	June 21	113.62	May 23, 1945	103.95
May 19	100.86	July 25	115.07	Mar. 19, 1946	107.57
July 20	105.75	Aug. 28	117.04	July 5, 1947	110.82
Aug. 25	106.23	Sept. 24	117.99	Nov. 8	113.25
Sept. 28	107.99	Oct. 29	117.25	June 25, 1948	122.46
Dec. 12	107.50	Dec. 4	114.22	Jan. 10, 1949	121.99
Jan. 24, 1939	107.46	Jan. 23, 1941	111.67	Dec. 7	116.01
Mar. 1	108.87	Mar. 25	105.23	Feb. 1, 1950	115.92
18	109.70	May 29	100.20	Apr. 10	118.84
Apr. 23	110.69	Nov. 14	103.89	Jan. 22, 1951	124.04

317. Lat. $29^{\circ}35'$, long. $98^{\circ}18'$. Depth 200 feet, diameter 6 inches.
Land-surface datum is 770.0 feet above msl.

Oct. 2, 1933	26.08	Dec. 12, 1938	75.80	May 23, 1940	63.70
Dec. 12, 1936	73.99	Jan. 24, 1939	75.53	June 21	60.88
Jan. 16, 1937	75.37	Mar. 1	74.22	July 25	75.66
Dec. 15	71.21	28	75.56	Aug. 28	76.43
Jan. 21, 1938	74.04	Apr. 23	75.98	Sept. 24	76.54
Feb. 2	73.72	May 25	75.64	Oct. 29	76.06
Mar. 30	73.69	July 4	76.37	Dec. 4	75.32
Apr. 22	73.49	Oct. 5	76.48	Jan. 23, 1941	74.92
May 19	73.12	Dec. 19	76.70	Mar. 25	52.12
June 23	74.23	Jan. 30, 1940	76.69	May 29	71.99
July 20	74.83	Feb. 20	75.66	Apr. 9, 1942	72.79
Aug. 25	75.22	Mar. 22	76.46		
Sept. 28	75.43	Apr. 30	75.48		

From records of Texas Board of Water Engineers and U. S. Geological Survey



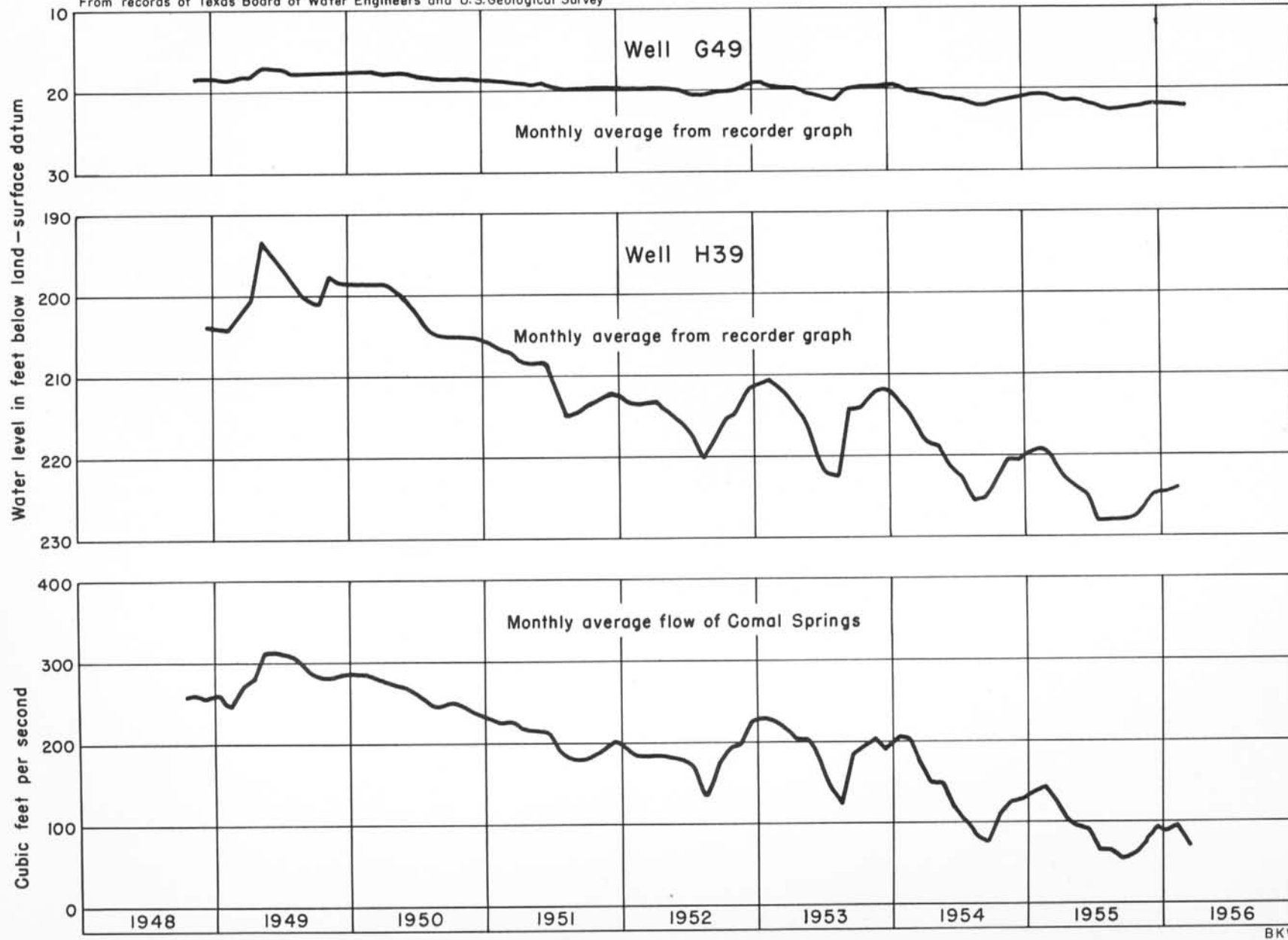


12



From records of Texas Board of Water Engineers and U.S. Geological Survey

Bulletin 5610



32

Hydrographs of water levels in wells, Comal County, and the flow of Comal Springs at New Braunfels, Tex.

BKW

